

PHASE CONTROL MODULE

ADT200HVI

Repetitive voltage up to

5800 V

Mean forward current

200 A

Surge current

4,5 kA

FINAL SPECIFICATION

apr 17 - ISSUE : 02

Symbol	Characteristic	Conditions	T _j [°C]	Value	Unit
BLOCKING					
V _{RRM}	Repetitive peak reverse/off-state voltage		125	5800	V
V _{RSM}	Non-repetitive peak reverse voltage		125	5900	V
I _{RRM/DRM}	Repetitive peak reverse/off-state current		125	70	mA
CONDUCTING					
I _{T(AV)}	Mean forward current	180° sin, 50 Hz, Th=85°C, double side cooled		200	A
I _{T(AV)}	Mean forward current	180° sin, 50 Hz, Tc=55°C, double side cooled		288	A
I _{TSM}	Surge forward current	Sine wave, 10 ms	125	4,5	kA
I ² t	I ² t	without reverse voltage		101 x 10 ³	A ² s
V _T	On-state voltage	On-state current = 150 A	25	1,88	V
V _{T(TO)}	Threshold voltage		125	1,45	V
r _T	On-state slope resistance		125	2,850	mohm
SWITCHING					
di/dt	Critical rate of rise of on-state current, min.	From 75% VDRM up to 1050 A; gate 10V, 5Ω	125	200	A/μs
dv/dt	Critical rate of rise of off-state voltage, min.	Linear ramp up to 70% of VDRM	125	500	V/μs
t _d	Gate controlled delay time, typical	VD=100V; gate source 25V, 10Ω, tr=.5 μs	25	1,6	μs
t _q	Circuit commutated turn-off time, typical	dv/dt = 20 V/μs linear up to 75% VDRM		500	μs
Q _{rr}	Reverse recovery charge	di/dt = -20 A/μs, I = 700 A	125		μC
I _{rr}	Peak reverse recovery current	VR = 50 V			A
I _H	Holding current, typical	VD=5V, gate open circuit	25	300	mA
I _L	Latching current, typical	VD=5V, tp=30μs	25	700	mA
GATE					
V _{GT}	Gate trigger voltage	VD=5V	25	2,50	V
I _{GT}	Gate trigger current	VD=5V	25	250	mA
V _{GD}	Non-trigger gate voltage, min.	VD=VDRM	125	0,25	V
V _{FGM}	Peak gate voltage (forward)			30	V
I _{FGM}	Peak gate current			10	A
V _{RGM}	Peak gate voltage (reverse)			5	V
P _{GM}	Peak gate power dissipation	Pulse width 100 μs		150	W
P _G	Average gate power dissipation			2	W
MOUNTING					
R _{th(j-h)}	Thermal impedance, DC	Junction to case, per element		70,0	°C/kW
R _{th(c-h)}	Thermal impedance	Case to heatsink, per element		20,0	°C/kW
T _j	Operating junction temperature			-30 / 125	°C
V _{ins}	RMS insulation voltage	50 hz, circuit to base, all terminal shorted	25	6000	V
T	Mounting torque	Case to heatsink		4 to 6	kN
T	Mounting torque	Busbars to terminal		12 to 18	kN
	Mass			1500	g

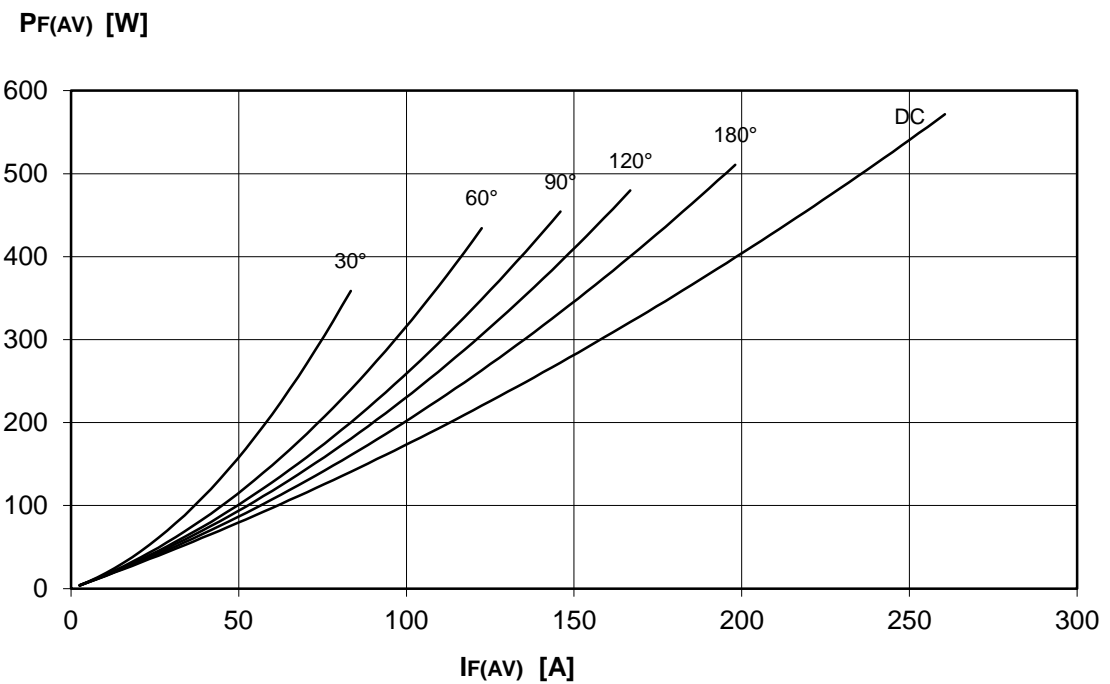
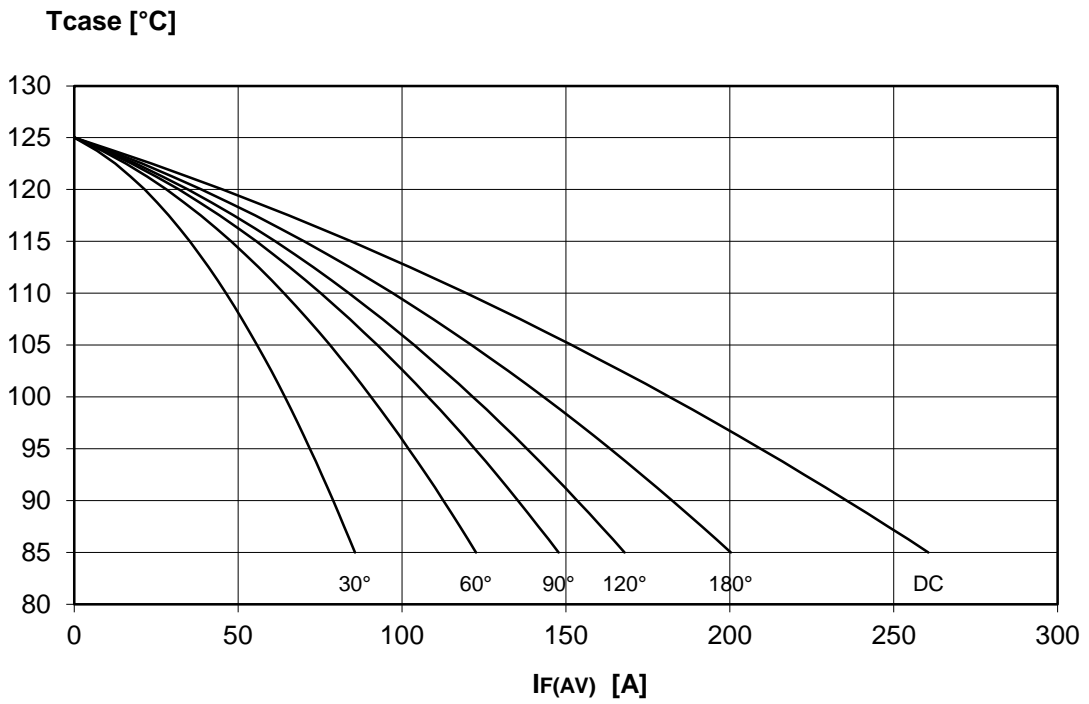
ORDERING INFORMATION : ADT200HVI S 58

standard specification VRRM/100

FINAL SPECIFICATION apr 17 - ISSUE : 02

DISSIPATION CHARACTERISTICS

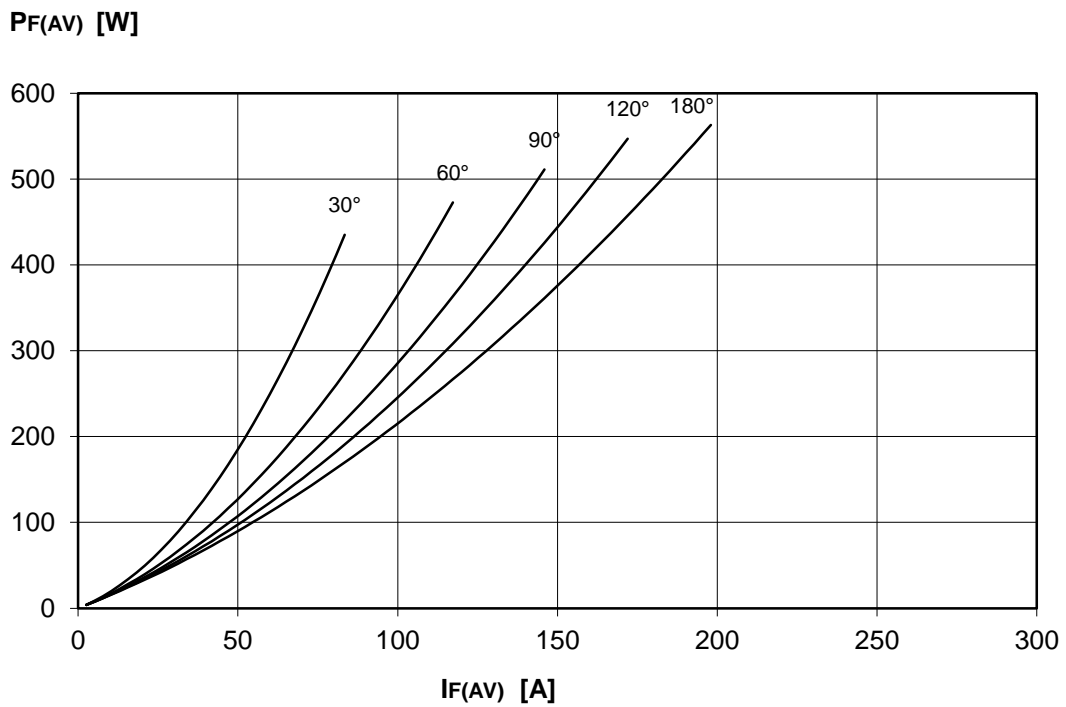
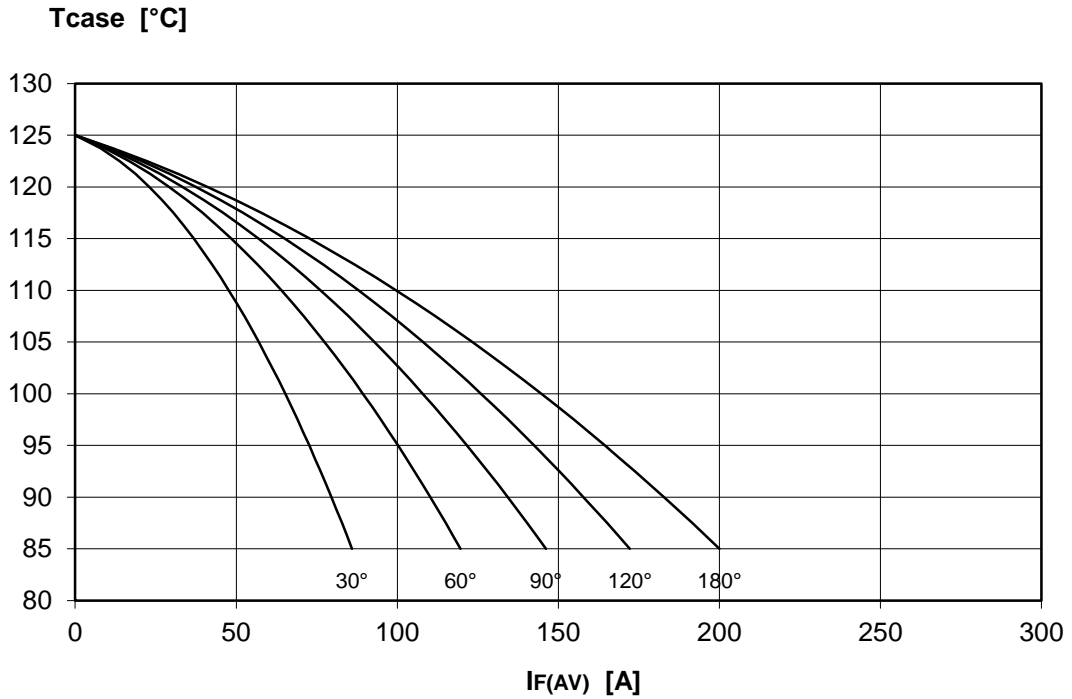
SQUARE WAVE



FINAL SPECIFICATION apr 17 - ISSUE : 02

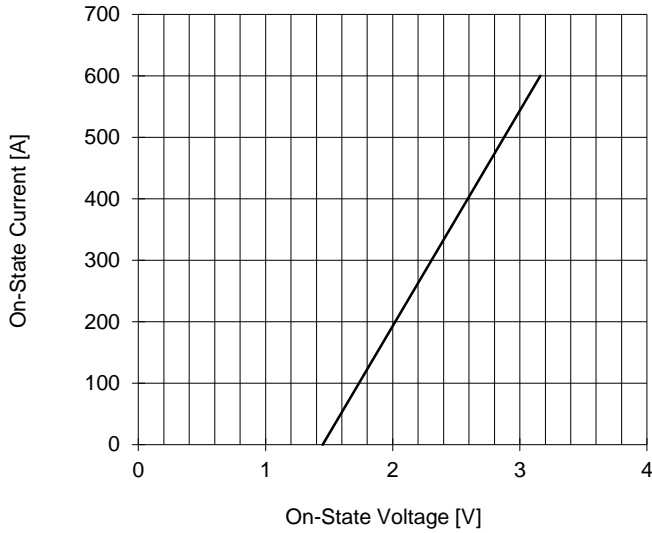
DISSIPATION CHARACTERISTICS

SINE WAVE

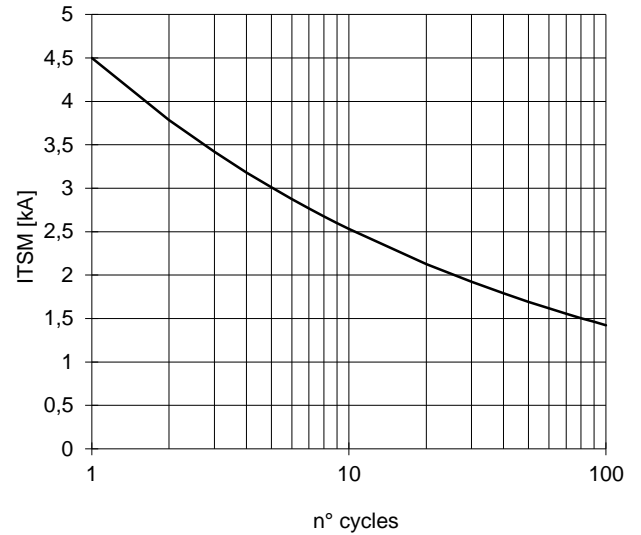


FINAL SPECIFICATION apr 17 - ISSUE : 02

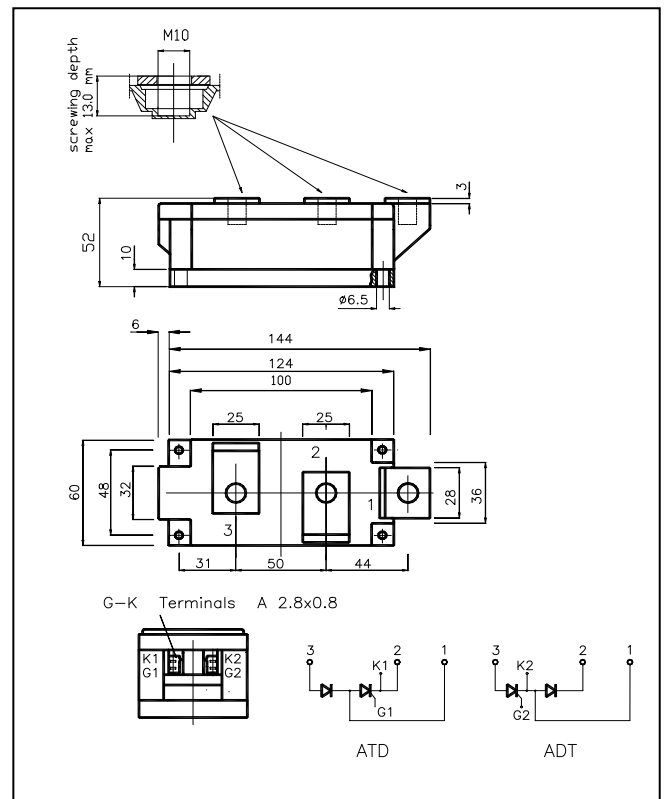
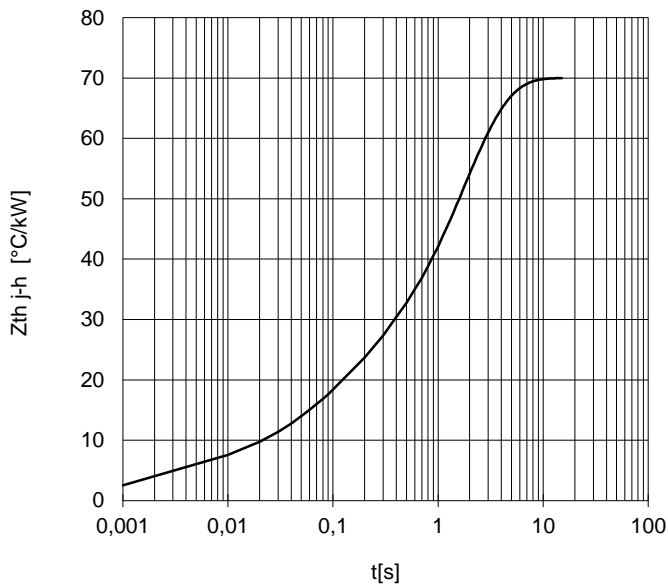
ON-STATE CHARACTERISTIC
T_j = 125 °C



SURGE CHARACTERISTIC
T_j = 125 °C



TRANSIENT THERMAL IMPEDANCE



All the characteristics given in this data sheet are guaranteed only with uniform clamping force, cleaned and lubricated heatsink, surfaces with flatness < .03 mm and roughness < 2 μm. In the interest of product improvement POSEICO SpA reserves the right to change any data given in this data sheet at any time without previous notice. If not stated otherwise the maximum value of ratings (symbols over shaded background) and characteristics is reported.

Distributed by

