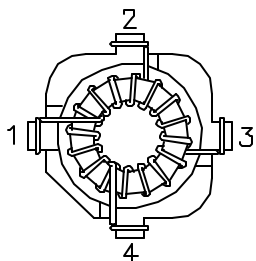
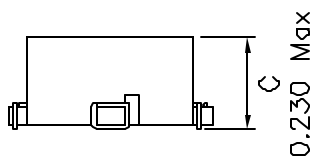
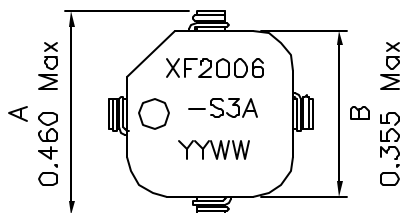
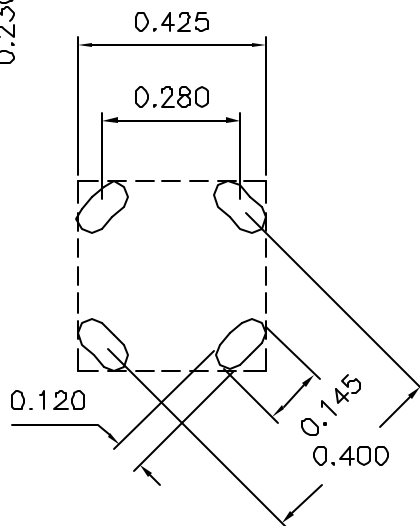


1. Dimensions:

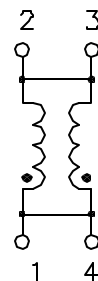


BOTTOM VIEW

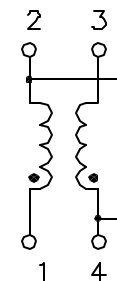


RECOMMENDED LAYOUT PATTERN
(TOP VIEW)

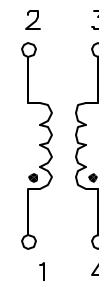
2. Schematic:



PARALLEL



SERIES



TRANSFORMER

3. Electrical Specifications: @25°C

	PARALLEL	SERIES
OCL(NO DC):	198.6uH ±25%	794.3uH ±25% 100KHz, 0.25V
MAX DC I:	0.58ADC	0.29ADC (30% Drop in L)
MAX Irms:	0.62ADC	0.31ADC (40°C Temp Rise)
DC RES:	0.963 Ohms Typ	3.854 Ohms Typ
Isolation:	300 Vdc Min	

Notes:

- Solderability: Leads shall meet MIL-STD-202G, Method 208H for solderability.
- Flammability: UL94V-0
- ASTM oxygen index: > 28%
- Insulation System: Class F 155°C. UL file E151556
- Operating Temperature Range: All listed parameters are to be within tolerance from -40°C to +85°C
- Storage Temperature Range: -55°C to +125°C
- Aqueous wash compatible
- SMD Lead Coplanarity: ±0.004*(0.102mm)
- Electrical and mechanical specifications 100% tested
- RoHS Compliant Component

DOC. REV A/1

PROPRIETARY

Document is the property of XFMRs Group & is not allowed to be duplicated without authorization.

XFMRs Inc. www.XFMRs.com	Title: DUAL SURFACE MOUNT INDUCTOR		
	UNLESS OTHERWISE SPECIFIED TOLERANCES: .xxx ±0.010 Dimensions in Inch	P/N: 6XF2006-S3A	REV. A
SCALE 2:1 SHT 1 OF 1	DWN.	Juan Mao	May-08-07
	CHK.	YK Liao	May-08-07
	APP.	MS	May-08-07