

DETAILS

| | |
|------------------------|------------------|
| Product Number | CA10820_STRADA-A |
| Family | Strada |
| Type | Assembly |
| Color | clear |
| Diameter | 19,6 x 15,5 mm |
| Height | 11,55 mm |
| Style | rectang |
| Optic Material | PMMA |
| Holder Material | |
| Fastening | tape, screw |
| Status | production ready |
| ROHS Compliant | Yes |
| Date Updated | 10/05/2017 |



OPTICAL PROPERTIES

| LED | Viewing Angle | Light Beam | Efficiency | cd/lm | Connector |
|----------------|---------------|---------------|------------|------------|-----------|
| Golden Dragon+ | 92+158 deg | Streetligh... | 91 % | 1.140 | - |
| Golden Dragon | sim: 20+128 | Streetligh... | sim: 92 % | sim: 2.200 | - |

D

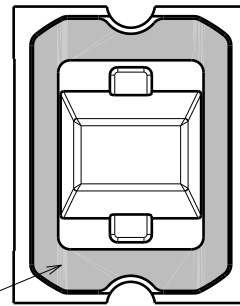
C

B

A

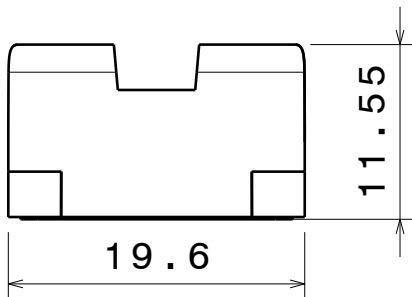
4

4

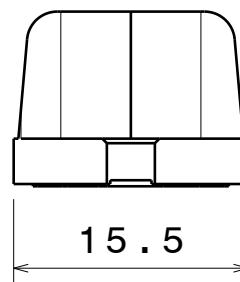


Tape 0.4mm

Bottom view



Right view



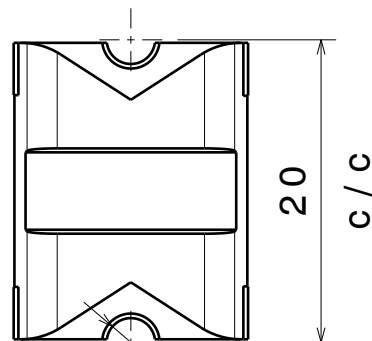
Front view

3

3

2

2



Top view

Materials

Lens: PMMA

Tape: PU Foam with PSA

This drawing is our property.
It can't be reproduced
or communicated without
our written agreement.



Ledil Oy
Salorankatu 10
FIN 24240 SALO
Finland

DRAWING TITLE

Datasheet STRADA-A-GD

DRAWN BY

as

DATE

1.8.2012

CHECKED BY

-

DATE

-

DESIGNED BY

hh

DATE

20.11.2008

SIZE

A4

PART NUMBER

SCALE

2:1

WEIGHT

REV

001

SHEET

1/1

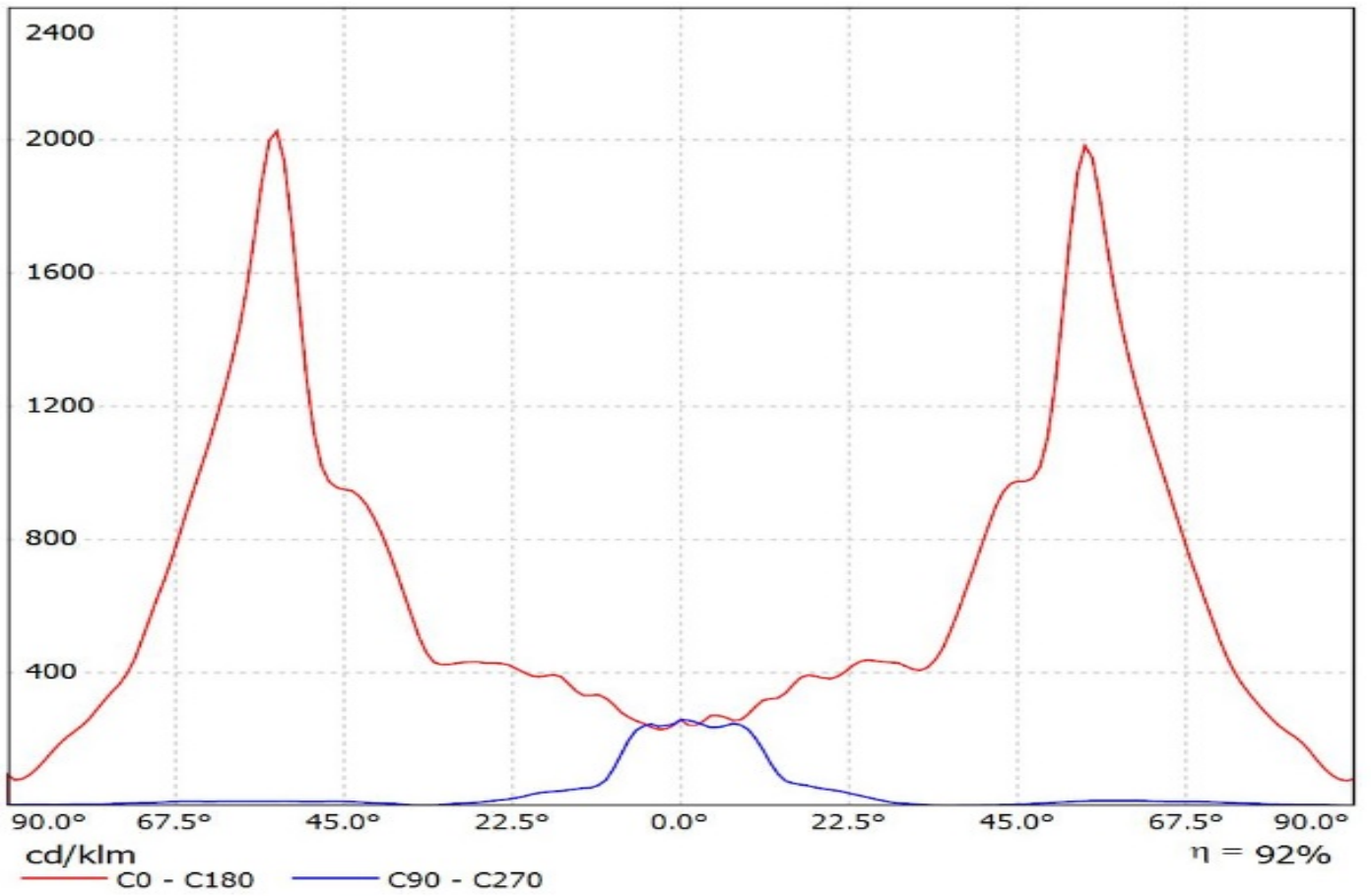
1

1

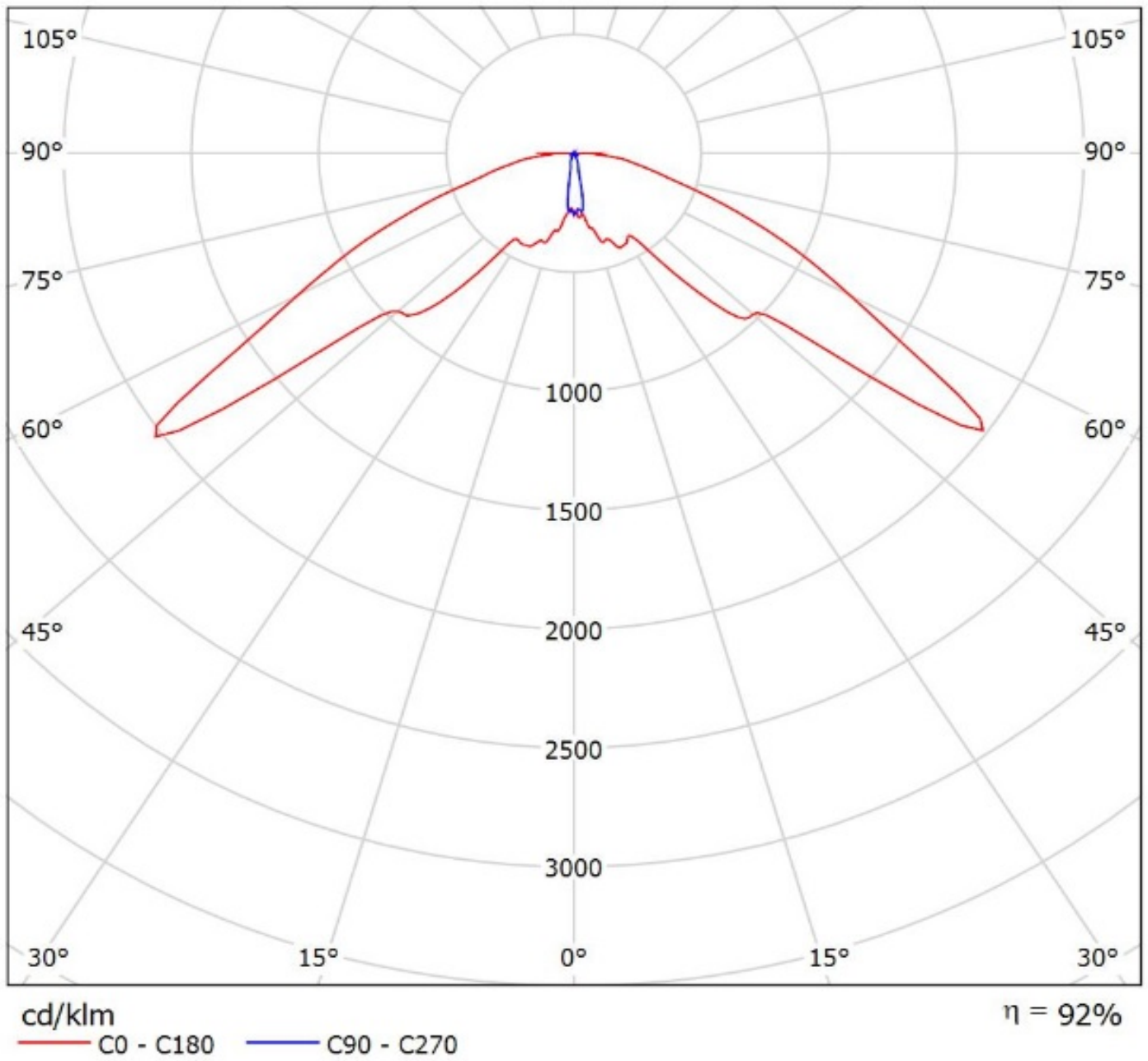
D

A

Luminaire: Ledil Oy CA10820_STRADA-A_(Golden_Dragon)_SIMULATED
Lamps: 1 x Osram Golden Dragon (LCW W5SM)



Luminaire: Ledil Oy CA10820_STRADA-A_(Golden_Dragon)_SIMULATED
Lamps: 1 x Osram Golden Dragon (LCW W5SM)



NOTE: The typical divergence will be changed by different color, chip size and chip position tolerance. The typical total divergence is the full angle measured where the luminous intensity is half of the peak value.