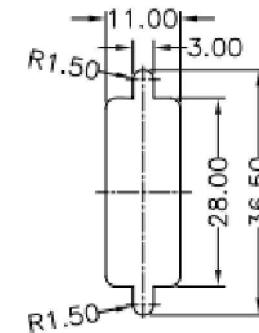
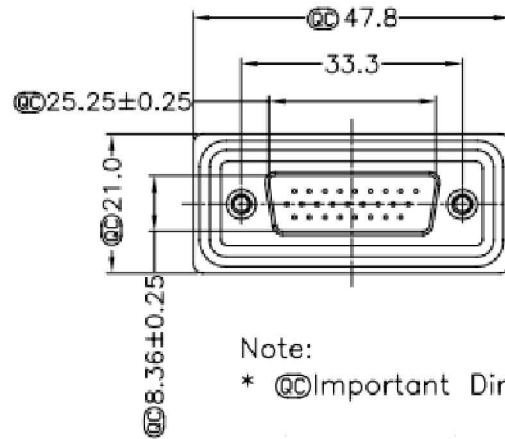
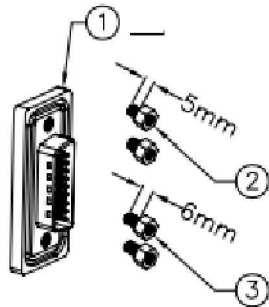
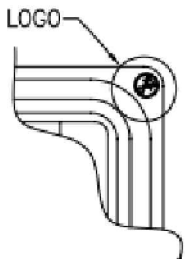


Screw L=5.0 For Panel Thickness Under 1.2mm

Screw L=6.0 For Panel Thickness Between 1.2~2.0mm



Recommended Panel Cut-Out



Note:

\*  $\text{Ø}$  Important Dimension.

\* Waterproof Rate : IP67

\* Connector:Black,Nylon+GF

\* Pin:Copper Alloy,Gold Plated

\* Do Mating Test After Glued

\* Applicable Wire Range: 24AWG-28AWG

RoHS compliant  
UNIT:mm

Scale	Free						Date	Name	Customer-No.	
TOLERANCE						Drawn	17.02.2014	Joanna	ASSMANN WSW-No. <b>A-HDS26LL-WP</b>	
	±0.25					Approved	17.02.2014	Joanna		
DIM	TOL								Drawing-No.	
X.°	±X°								ASS 6252 CO	rev00
X.X°	±X°	Ⓒ	Drawn	17.02.2014	Joanna				Replace	Sheet
Angle	TOL	Id.	Modification	Date	Name					