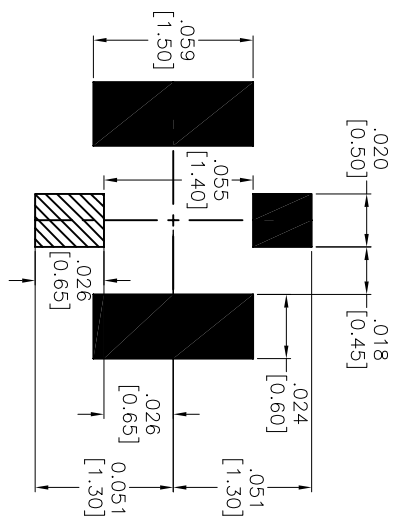
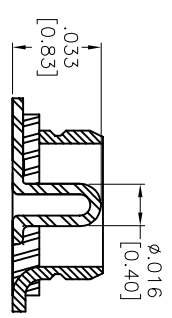
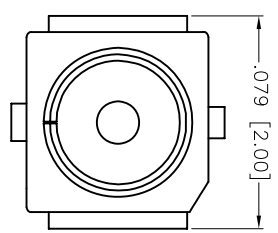
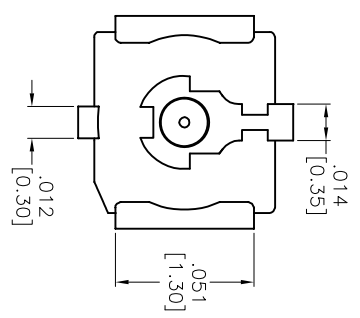
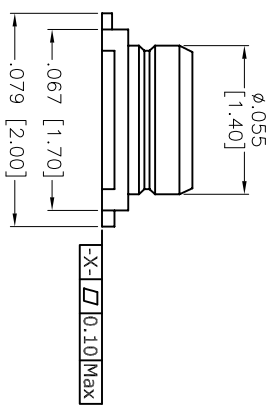
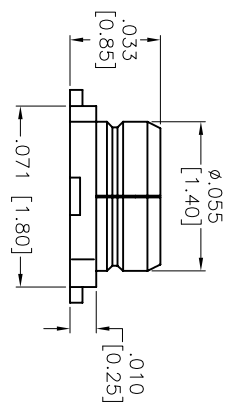


APPROVED: _____
 DATE: _____ TITLE: _____

Rev	AWO #	Description	Date	Appr
-	6163	RELEASED	04/04/06	
A	-	REDRAWN	7/2/15	AVYYC



Recommended PCB Layout



SHELL	COPPER ALLOY	GOLD FLASH
CENTER PIN	COPPER ALLOY	GOLD FLASH
HOUSING	LCP (GF=30%)	IVORY
DESCRIPTION	MATERIAL	FINISH

SPECIFICATIONS:

Electrical:
 Application Frequency UP TO 6 G HZ.
 Environmental:
 Lead free, RoHS compliant.

UNLESS OTHERWISE SPECIFIED
 ALL DIMENSIONS ARE MM [INCHES]
 TOLERANCES: EXCEPT AS NOTED
 INCHES HOLEES ±.10
 .X ±.10 ØXX ±.015
 .XX ±.020 ØXXX ±.010
 .XXX ±.015 ØXXXX ±.010

ADAM TECH
 909 Rahway Avenue, Union, NJ 07083
 Phone: 908-687-5000 Fax: 908-687-0214

TITLE: RF HEADER (W/FL), RECEPTACLE VERTICAL, 50 OHM, PCB MOUNT

DRAWN	LFJ	DATE	04/04/06
CHECKED			
APPROVED			

SIZE	PART NO.	REV.
X	RF28-01-T-00-50-G	A
REF:	SM023T	
SCALE:	NIS	
SHEET	1 OF 1	

6 5 4 3 2 1