

Surface Mount Frequency Mixer

ADE-1+ ADE-1

Level 7 (LO Power +7 dBm) 0.5 to 500 MHz



Maximum Ratings

Operating Temperature	-40°C to 85°C
Storage Temperature	-55°C to 100°C
RF Power	50mW
IF Current	40mA

Pin Connections

LO	6
RF	3
IF	2
GROUND	1,4,5

Features

- low conversion loss, 5.0 dB typ.
- excellent L-R isolation, 55 dB typ.
- excellent IP3, 15 dBm typ.
- low profile package
- aqueous washable
- protected by US patent 6,133,525

Applications

- VHF/UHF

CASE STYLE: CD636
PRICE: \$1.99 ea. QTY (100)

**+ RoHS compliant in accordance
with EU Directive (2002/95/EC)**

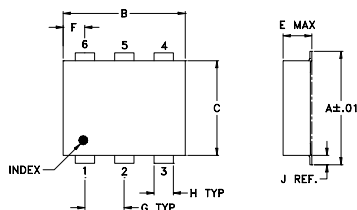
The +Suffix identifies RoHS Compliance. See our web site
for RoHS Compliance methodologies and qualifications.

Electrical Specifications

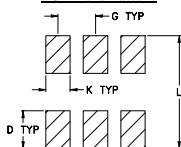
FREQUENCY (MHz)	CONVERSION LOSS (dB)	LO-RF ISOLATION (dB)			LO-IF ISOLATION (dB)			IP3 at center band (dBm)										
		L	M	U	L	M	U											
LO/RF f_L - f_U	Mid-Band m \bar{X} σ Max. Total Range Max.	Typ.	Min.	Typ.	Min.	Typ.	Min.	Typ.										
0.5-500	DC-500	5.0	0.10	6.5	7.8	70	50	55	35	45	30	65	45	40	25	30	20	15

1 dB COMP.: +1 dBm typ. L = low range [f_L to $10 f_L$] M = mid range [$10 f_L$ to $f_U/2$] U = upper range [$f_U/2$ to f_U]
m = mid band [$2 f_L$ to $f_U/2$]

Outline Drawing



PCB Land Pattern

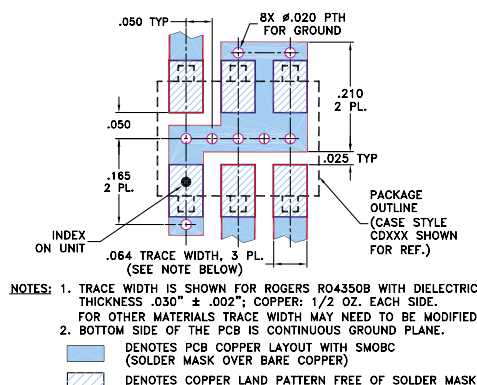


Suggested Layout,
Tolerance to be within $\pm .002$

Outline Dimensions (inch/mm)

A	B	C	D	E	F	G	H	J	K	L	wt
.272	.310	.220	.100	.162	.055	.100	.030	.026	.065	.300	grams
6.91	7.87	5.59	2.54	4.11	1.40	2.54	0.76	0.66	1.65	7.62	0.25

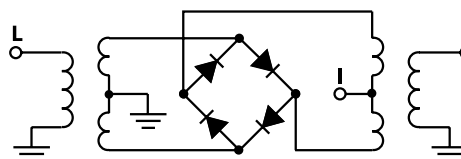
Demo Board MCL P/N: TB-03 Suggested PCB Layout (PL-052)



Typical Performance Data

Frequency (MHz)		Conversion Loss (dB)	Isolation L-R (dB)	Isolation L-I (dB)	VSWR RF Port (:1)	VSWR LO Port (:1)
RF	LO	LO +7dBm	LO +7dBm	LO +7dBm	LO +7dBm	LO +7dBm
0.50	30.50	5.68	67.49	56.67	1.46	2.51
0.80	30.80	5.55	67.50	56.83	1.32	2.56
1.00	31.00	5.35	67.51	56.67	1.29	2.56
5.00	35.00	5.06	66.17	55.50	1.19	2.51
10.00	40.00	4.95	65.17	54.17	1.18	2.51
20.00	50.00	5.02	63.50	52.17	1.17	2.56
40.00	70.00	4.89	61.00	48.83	1.14	2.51
63.25	93.25	4.93	58.84	46.33	1.11	2.51
94.82	124.82	4.99	58.00	44.34	1.08	2.56
100.00	130.00	5.08	58.00	43.84	1.08	2.56
126.39	156.39	4.96	56.67	42.17	1.08	2.56
157.97	187.97	5.11	54.16	41.16	1.10	2.51
221.12	251.12	5.15	51.84	40.00	1.05	2.67
250.00	280.00	5.10	53.00	38.67	1.03	2.61
284.26	314.26	5.20	48.33	36.50	1.04	2.67
347.41	377.41	5.43	47.66	33.34	1.10	2.56
378.98	408.98	5.33	47.00	30.67	1.15	2.80
410.56	440.56	5.54	45.50	29.17	1.17	2.80
470.00	500.00	5.81	44.67	28.16	1.14	3.01
500.00	530.00	5.91	43.82	28.50	1.23	3.09

Electrical Schematic



Mini-Circuits
ISO 9001 ISO 14001 CERTIFIED

ALL NEW
minicircuits.com

P.O. Box 350166, Brooklyn, New York 11235-0003 (718) 934-4500 Fax (718) 332-4661 For detailed performance specs & shopping online see Mini-Circuits web site



The Design Engineers Search Engine Provides ACTUAL Data Instantly From MINI-CIRCUITS At: www.minicircuits.com

RF/IF MICROWAVE COMPONENTS

REV. E
M102713
ADE-1
ED-7605/1
DJ/TD/CP/AM
061227
Page 1 of 2

Performance Charts

