

0.8A, 600V - 1000V Glass Passivated Bridge Rectifiers

FEATURES

- Ideal for automated placement
- Reliable low cost construction utilizing molded plastic technique
- High surge current capability
- Compliant to RoHS Directive 2011/65/EU and in accordance to WEEE 2002/96/EC
- Halogen-free according to IEC 61249-2-21


MBS


MECHANICAL DATA

Case: Molded plastic body

Molding compound, UL flammability classification rating 94V-0

Moisture sensitivity level: level 1, per J-STD-020

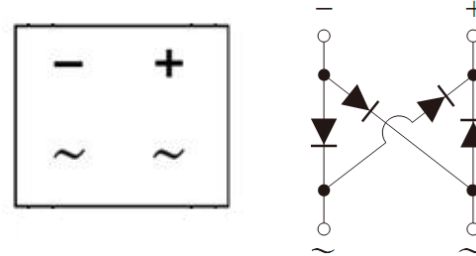
Packing code with suffix "G" means green compound (halogen-free)

Terminal: Matte tin plated leads, solderable per JESD22-B102

Meet JESD 201 class 1A whisker test

Polarity: Polarity as marked on the body

Weight: 0.12 g (approximately)



MAXIMUM RATINGS AND ELECTRICAL CHARACTERISTICS (T_A=25°C unless otherwise noted)

| PARAMETER | SYMBOL | MBS6-T | MBS8-T | MBS10-T | UNIT |
|---|--------------------------------------|--------|--------------|---------|------------------|
| Marking code | | MBS6 | MBS8 | MBS10 | |
| Maximum repetitive peak reverse voltage | V _{RRM} | 600 | 800 | 1000 | V |
| Maximum RMS voltage | V _{RMS} | 420 | 560 | 700 | V |
| Maximum DC blocking voltage | V _{DC} | 600 | 800 | 1000 | V |
| Maximum average forward rectified current On glass-epoxy P.C.B. On aluminum substrate | I _{F(AV)} | | 0.5 0.8 | | A |
| Peak forward surge current, 8.3 ms single half sine-wave superimposed on rated load | I _{FSM} | | 35 | | A |
| Rating for fusing (t<8.3ms) | I ² t | | 5.08 | | A ² s |
| Maximum instantaneous forward voltage (Note 1) I _F = 0.4 A | V _F | | 1.0 | | V |
| Maximum reverse current @ rated V _R T _J =25°C T _J =125°C | I _R | | 5 100 | | μA |
| Typical junction capacitance per Leg (Note 2) | C _J | | 13 | | pF |
| Typical thermal resistance | R _{θJL} R _{θJA} | | 20 85 | | °C/W |
| Operating junction temperature range | T _J | | - 55 to +150 | | °C |
| Storage temperature range | T _{STG} | | - 55 to +150 | | °C |

Note 1: Pulse Test with PW=300μs, 1% duty cycle

Note 2: Measure at 1.0MHz and applied reverse voltage of 4.0V DC.

ORDERING INFORMATION

| PART NO. | PACKING CODE | PACKING CODE SUFFIX | PACKAGE | PACKING |
|-----------------------|--------------|---------------------|---------|------------------------|
| MBSx-T (Note 1, 2) | RC | G | MBS | 3,000 / 13" Paper reel |

Note 1: "x" defines voltage from 600V (MBS6-T) to 1000V (MBS10-T)

Note 2: Whole series with green compound

EXAMPLE

| EXAMPLE P/N | PART NO. | PACKING CODE | PACKING CODE SUFFIX | DESCRIPTION |
|-------------|----------|--------------|---------------------|----------------|
| MBS10-T RCG | MBS10-T | RC | G | Green compound |

RATINGS AND CHARACTERISTICS CURVES

($T_A=25^\circ\text{C}$ unless otherwise noted)

FIG. 1 MAXIMUM FORWARD CURRENT DERATING CURVE

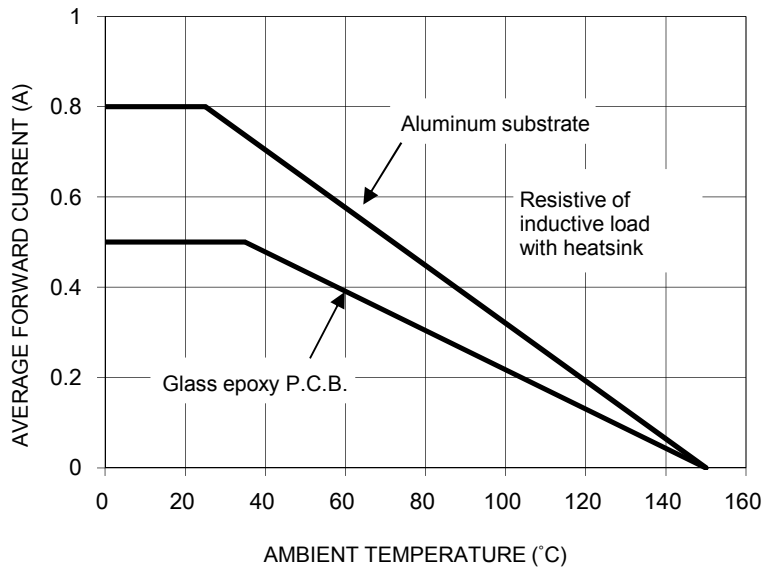


FIG. 2 TYPICAL REVERSE CHARACTERISTICS

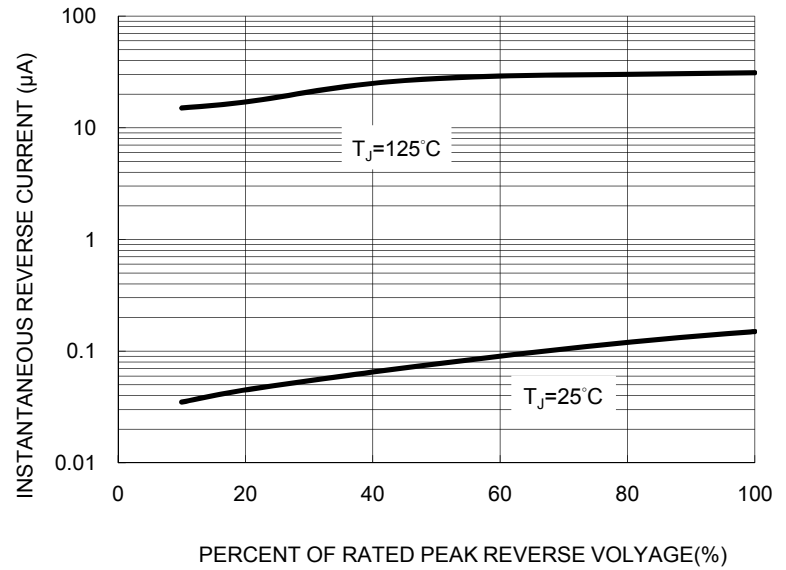


FIG. 3 MAXIMUM NON-REPETITIVE FORWARD SURGE CURRENT

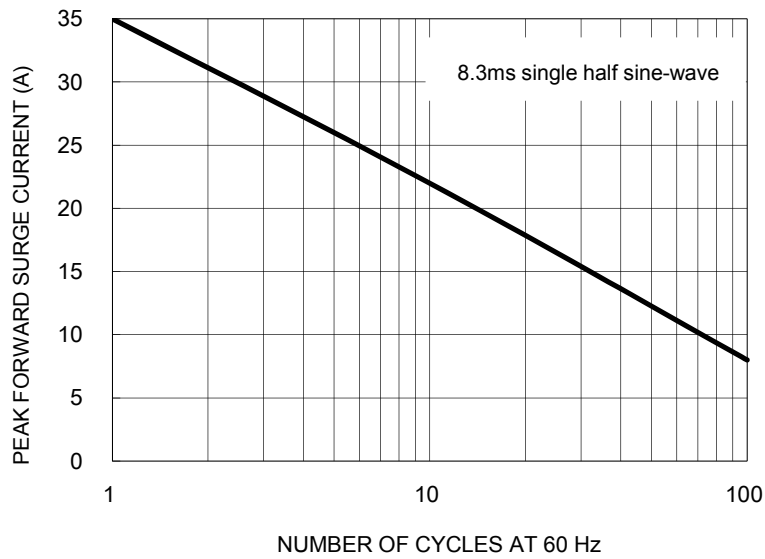


FIG. 4 TYPICAL FORWARD CHARACTERISTICS

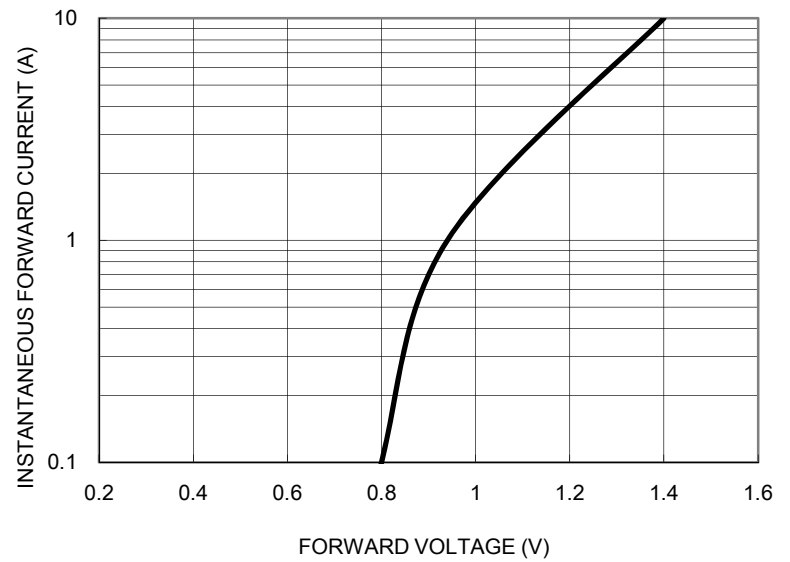
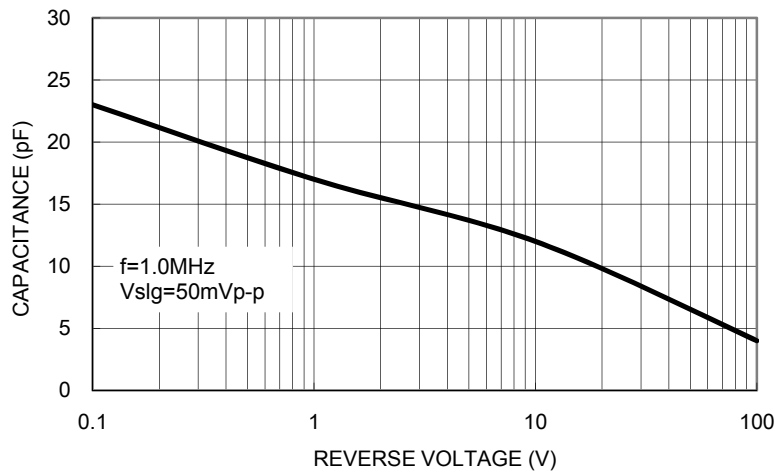
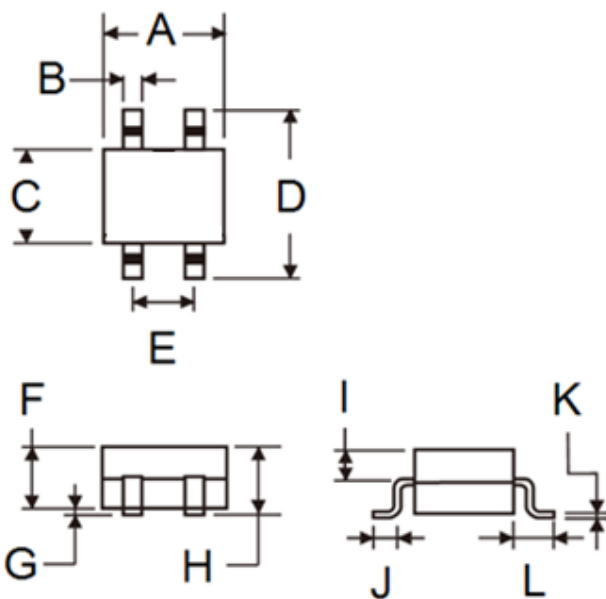


FIG. 5 TYPICAL JUNCTION CAPACITANCE



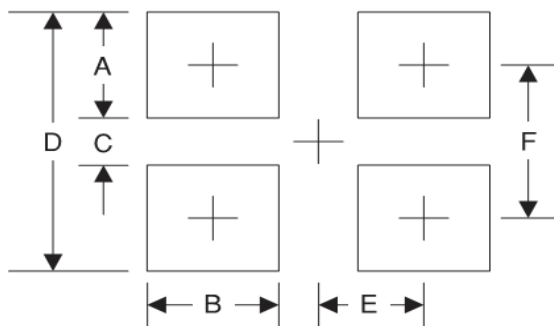
PACKAGE OUTLINE DIMENSIONS

MBS



| DIM. | Unit (mm) | | Unit (inch) | |
|------|-----------|------|-------------|-------|
| | Min | Max | Min | Max |
| A | 4.50 | 4.90 | 0.177 | 0.193 |
| B | 0.56 | 0.84 | 0.022 | 0.033 |
| C | 3.60 | 5.00 | 0.142 | 0.197 |
| D | - | 6.90 | - | 0.272 |
| E | 2.20 | 2.60 | 0.087 | 0.102 |
| F | 2.30 | 2.70 | 0.091 | 0.106 |
| G | - | 0.20 | - | 0.008 |
| H | - | 2.90 | - | 0.114 |
| I | 0.95 | 1.53 | 0.037 | 0.060 |
| J | 0.70 | 1.10 | 0.028 | 0.043 |
| K | 0.15 | 0.35 | 0.006 | 0.014 |
| L | 1.10 | 2.12 | 0.043 | 0.083 |

SUGGESTED PAD LAYOUT



| Symbol | Unit (mm) | Unit (inch) |
|--------|-----------|-------------|
| A | 1.7 | 0.067 |
| B | 0.9 | 0.035 |
| C | 4.4 | 0.173 |
| D | 8.1 | 0.319 |
| E | 1.3 | 0.051 |
| F | 6.3 | 0.248 |

MARKING DIAGRAM



P/N = Marking Code
 YW = Date Code
 F = Factory Code

Notice

Specifications of the products displayed herein are subject to change without notice. TSC or anyone on its behalf, assumes no responsibility or liability for any errors or inaccuracies.

Information contained herein is intended to provide a product description only. No license, express or implied, to any intellectual property rights is granted by this document. Except as provided in TSC's terms and conditions of sale for such products, TSC assumes no liability whatsoever, and disclaims any express or implied warranty, relating to sale and/or use of TSC products including liability or warranties relating to fitness for a particular purpose, merchantability, or infringement of any patent, copyright, or other intellectual property right.

The products shown herein are not designed for use in medical, life-saving, or life-sustaining applications. Customers using or selling these products for use in such applications do so at their own risk and agree to fully indemnify TSC for any damages resulting from such improper use or sale.