



BP240160B

Feature

1. FSTN LCD, TAB IC and PCB package
2. Built-in controller RA8835
3. +3V ~ +5V single power supply,
4. 1/160 duty cycle
5. Option: LED, EL B/L
6. Option: Touch panel
7. Built-in positive voltage for LCD driver

Mechanical Data

Item	Standard Value	Unit
Module Dimension	88.2 x 59.0	mm
Viewing Area	66.0 x 46.0	mm
Dot Size	0.225 x 0.225	mm
Dot Pitch	0.24 x 0.24	mm

Pin Assignment

Pin	Symbol	Function
1	/RST	Reset signal
2	/RD	80s:read signal/68s:enable signal (E)
3	/WR	80s:write signal/68s: R/W signal
4	/CS	Chip select
5	Ao	Data latch pulse
6~13	DB0-7	Data bus line
14	Vdd	Power supply (+3V ~ +5V)
15	Vss	Power supply (GND)
16	Vlcd	Positive voltage output (+26V)
17	Vadj	Contrast adjustment (Vadj - Vss)
18	BL_on	BL on/off signal (H: on L: off)
19	A	Power supply for B/L +
20	K	Power supply for B/L -
21	Y1	Touch panel upper signal (Y axis)
22	X1	Touch panel right signal (X axis)
23	Y2	Touch panel lower signal (Y axis)
24	X2	Touch panel left signal (X axis)



<LED Version>

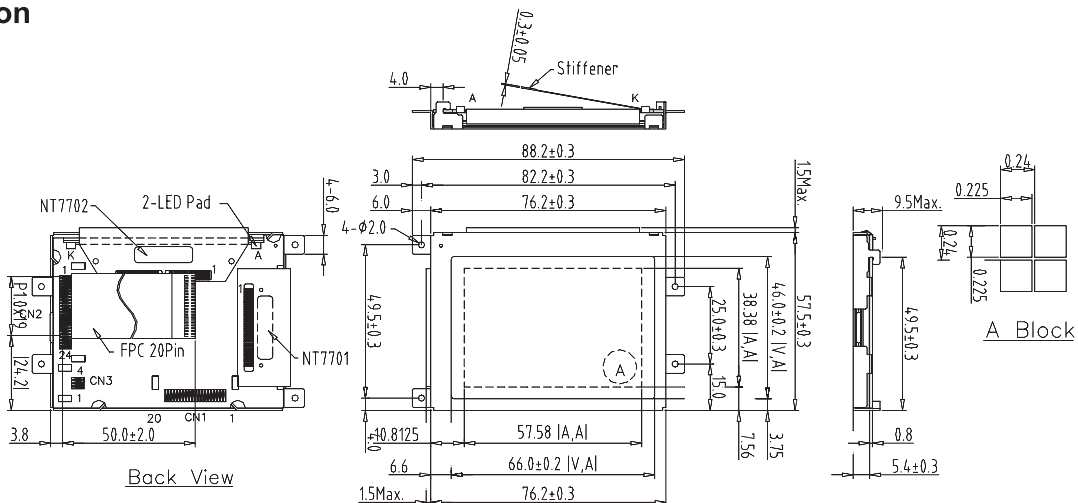


<EL Version>

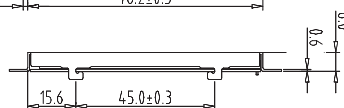
Electronic Characteristics

Item	Symbol	Condition	Typical Value	Unit
Input Voltage	Vdd		5.0	V
Supply Current	Idd	Vdd = +5V	40	mA
LCD Driving Voltage	Vadj-Vss	25°C	19.5	V

Dimension



Recommend	Company	Parts No.
NC2.	Molex.	52207-2090
	AMP.	2-487951-0



BP-5

※ EL version, no metal frame