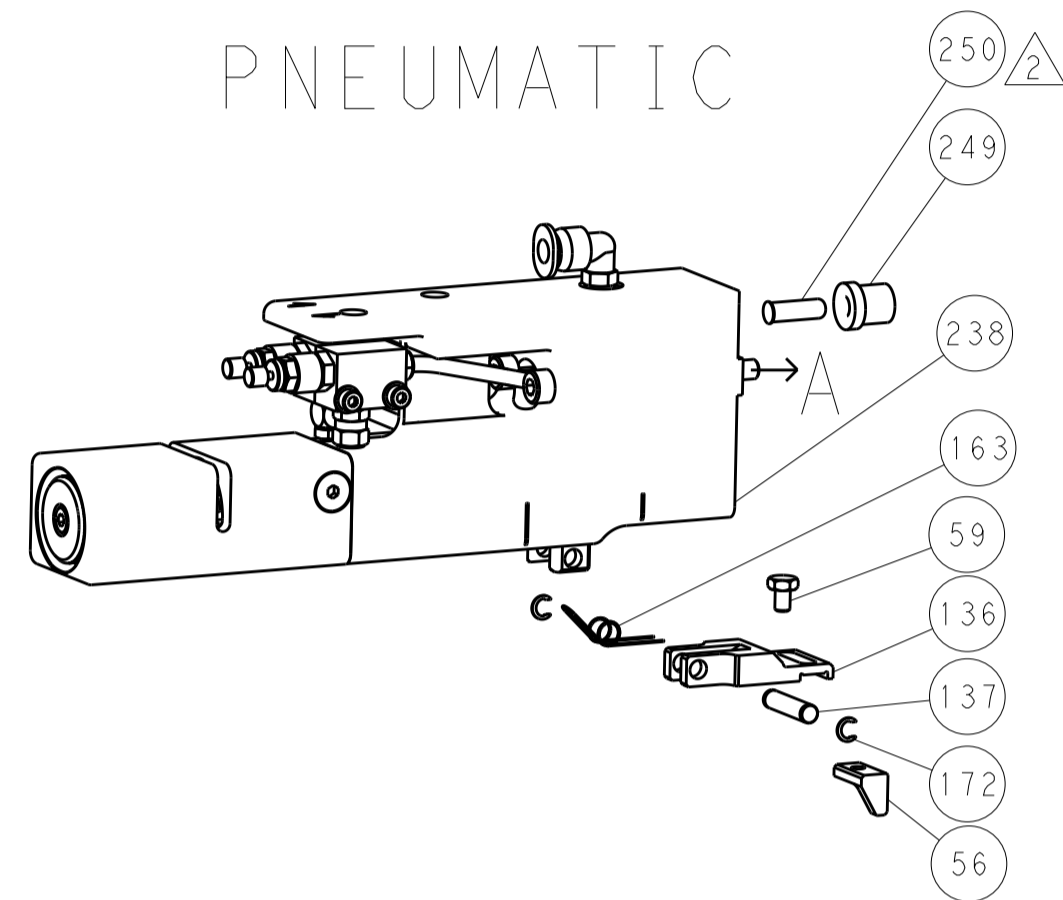


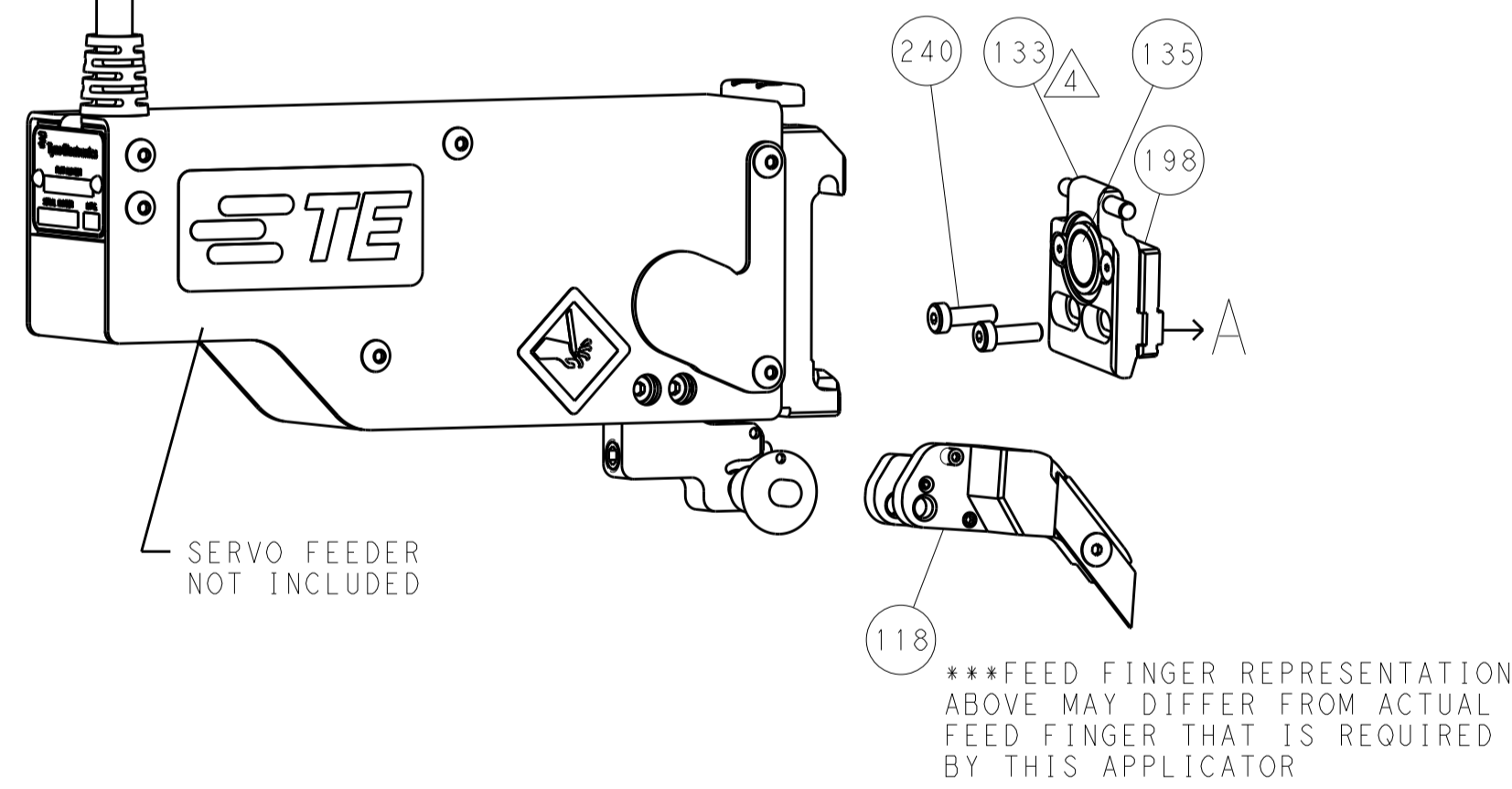
LOC		DIST		REVISIONS			
A	66	P	LTM	DESCRIPTION	DATE	OWN	APVD
		-	-	SEE SHEET 1	-	-	-

FEED TYPE

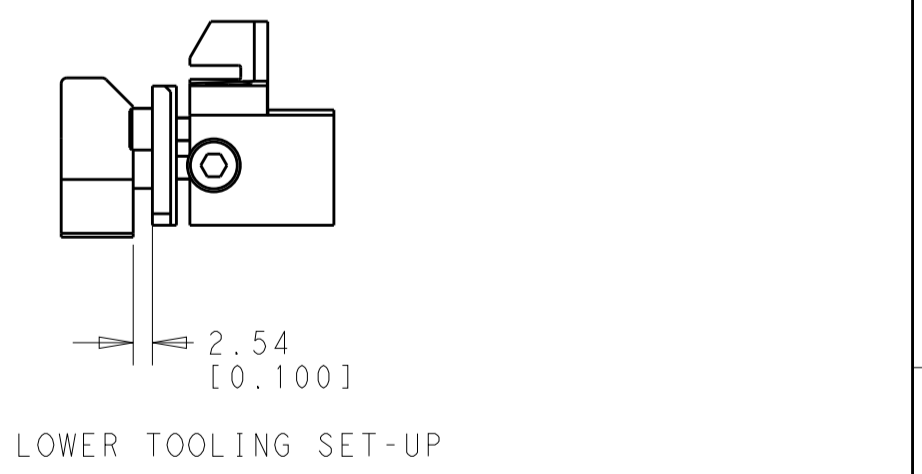
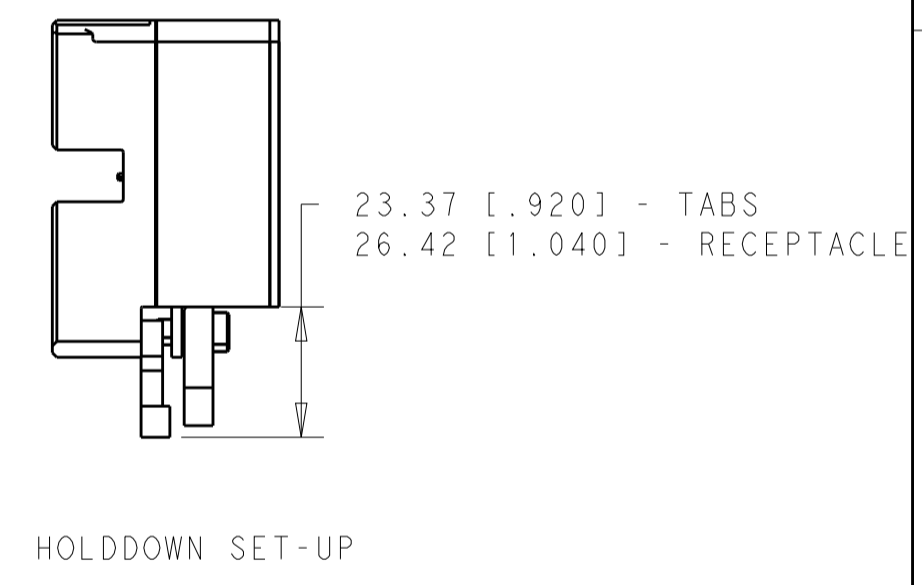
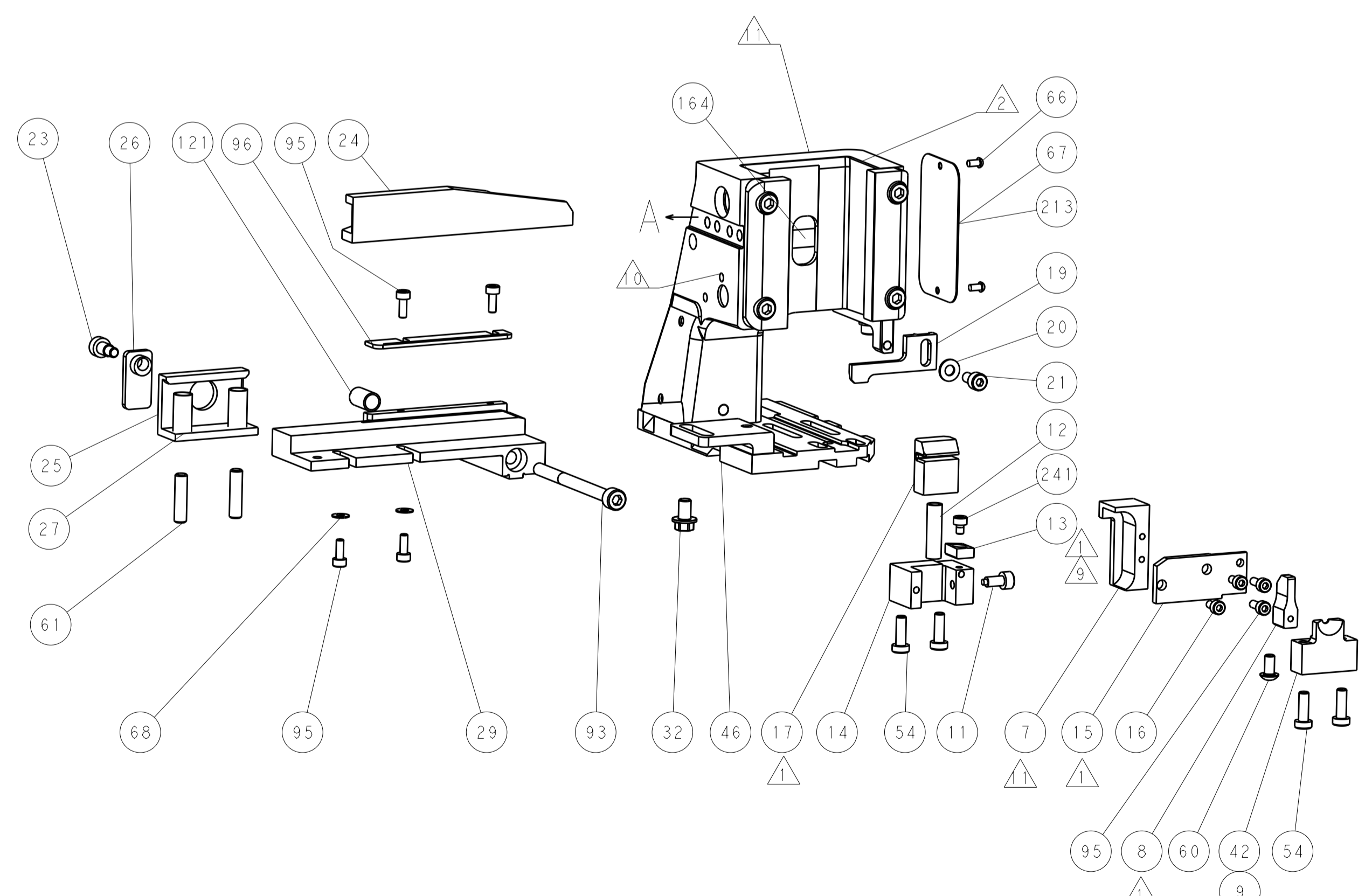
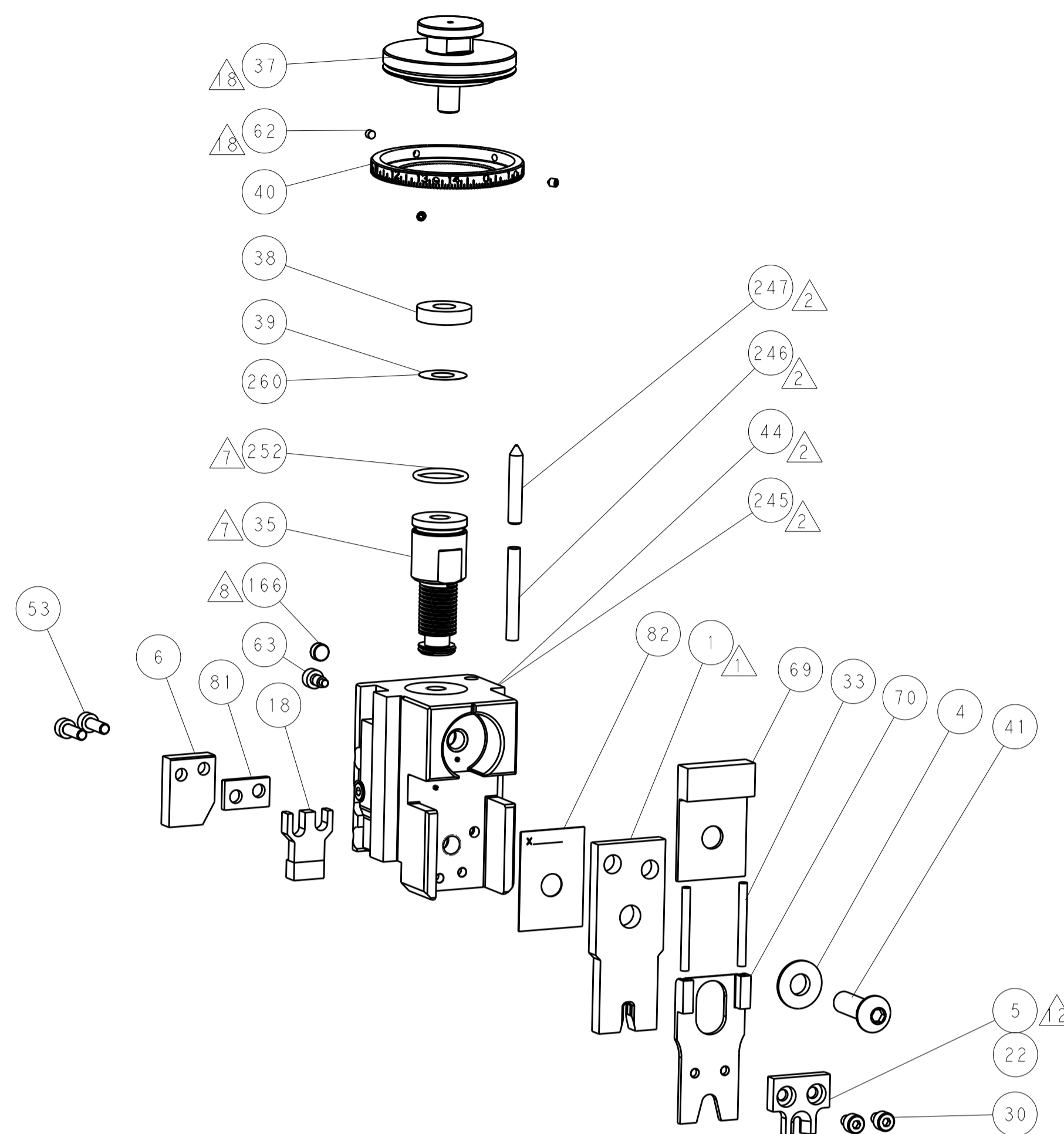
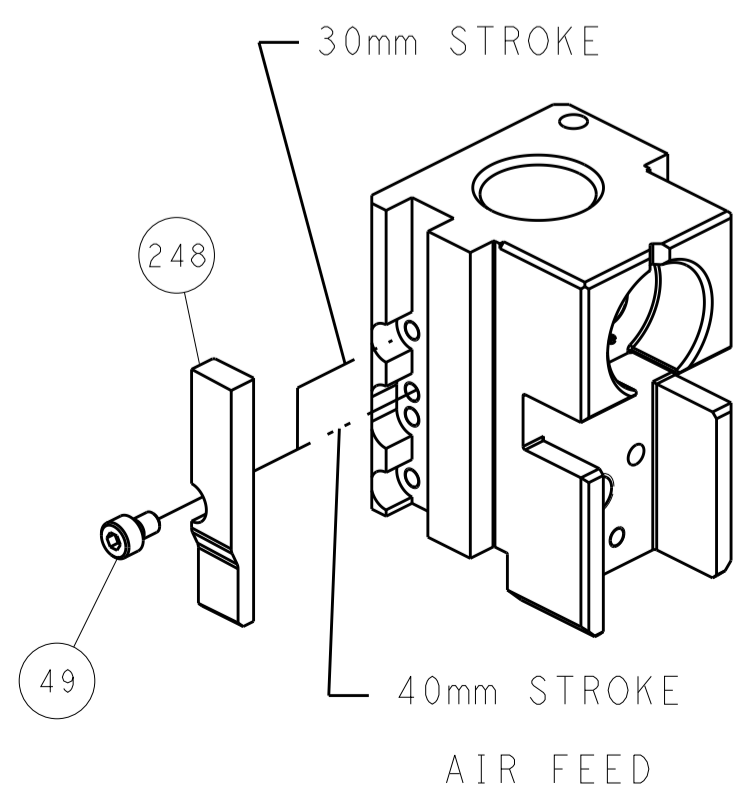
PNEUMATIC



SERVO LATCH PLATE



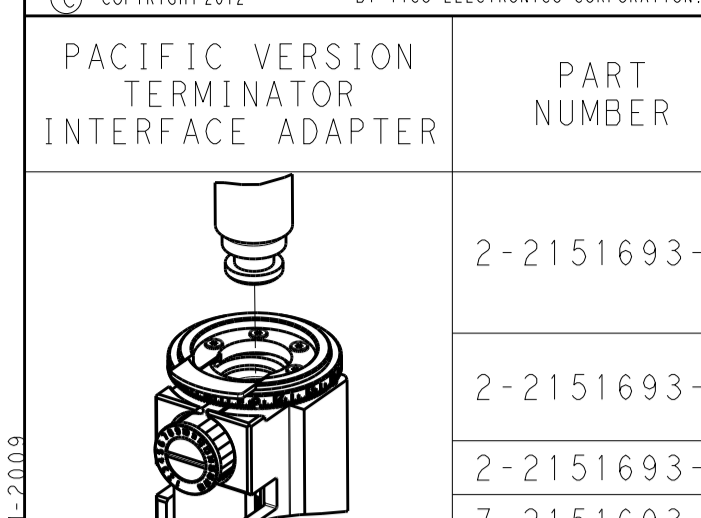
CAM POSITIONS



ATLANTIC VERSION
 Shown on sheets 1 of 4 & 2 of 4
 (Pacific version shown on sheets 3 of 4 & 4 of 4)

DIMENSIONS:		TOLERANCES UNLESS OTHERWISE SPECIFIED:		OWN: B. WEAVER 12JUN2012	TE Connectivity Harrisburg, PA 17105-3608
mm	0 PLC ±0.1	1 PLC ±0.1	2 PLC ±0.02	CHK: G. HOFNER 12JUN2012	
	3 PLC ±0.005	4 PLC ±0.0005	ANGLES ±0.0005	APVD: T. ELBIN 12JUN2012	NAME: Ocean Side Feed Applicator
MATERIAL:	FINISH:	WEIGHT:	SCALE: 1:1	SHEET 2 OF 4	REV A

APPLICATOR STYLE CONVERSION CHART. Table with columns: CONVERT TO, PART NUMBERS REQUIRED. Rows include SERVO LATCH PLATE SMART APPLICATOR, PNEUMATIC FEED, etc.



APPLICATOR DATA. Table with columns: CRIMP WIRE, SIZE, TYPE, INSUL.

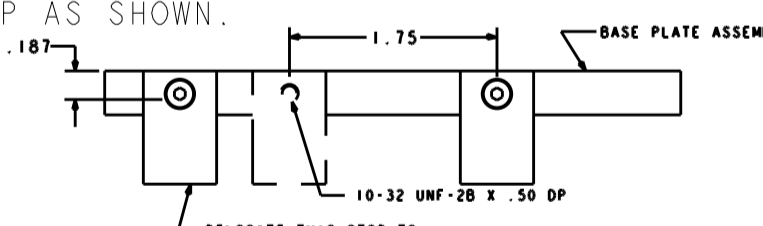
APPLICATOR INSTRUCTIONS 408-10389.

TERMINAL DATA: TE TERMINAL. TE CRIMP SPECIFICATION. Table with columns: WIRE STRIP LENGTH, INSULATION DIAMETER RANGE, etc.

Table with columns: WIRE SIZE, CRIMP HEIGHT INCH [mm], CRIMP HEIGHT REFERENCE SETTING, SOLDER.

- 1. RECOMMENDED SPARE PARTS
2. GREASE BEARING SURFACES LIGHTLY
3. LUBRICATE DAILY PER THE APPLICATOR INSTRUCTION SHEET SUPPLIED WITH THE APPLICATOR.
4. APPLICATOR SPECIFIC DATA TO BE ENTERED INTO BLANK MEMORY CHIP AT ASSEMBLY...

- 13. IT MAY BE NECESSARY TO MODIFY THE T-TERMINATING/K-PRESS BASE PLATE BEFORE USE BY ADDING A 10-32 HOLE TO RELOCATE THE FORWARD STOP AS SHOWN.
14. ITEMS 253 AND 255 MUST BE INSTALLED IN THE G-TERMINATING UNIT CHIP RELIEF HOLE BEFORE INSTALLING THE APPLICATOR.
15. ITEM 257, REQUIRED IF APPLICATOR IS RUN ON T-TERMINATING UNIT/K-PRESS. GUARD, ITEM 256, REQUIRED IF APPLICATOR IS BEING USED ON G-TERMINATOR.

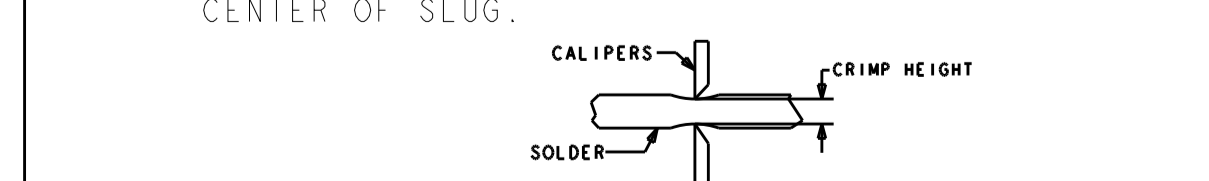


*WARNING
ON INSTALLATION, SET WIRE DISC, ITEM 40 TO LARGEST WIRE SIZE SETTING. USE OF SETTINGS BELOW MINIMUM REQUIRED CRIMP HEIGHT SETTING WILL CAUSE DAMAGE TO CRIMP TOOLING.

Table with columns: ITEM NO, PART NO, DESCRIPTION, ITEM NO. Rows include SCR, SHC, M4x10, BRACKET, HOLD DOWN, GUARD ASSEMBLY, etc.

REVISIONS table with columns: REVISIONS, DATE, DWN, APVD.

Main parts list table with columns: PART NO, DESCRIPTION, ITEM NO. Rows include SHCS, LOW HEAD, RoHS, M5 X 16, MECHANICAL FEED ASSEMBLY, AIR FEED MODULE, etc.

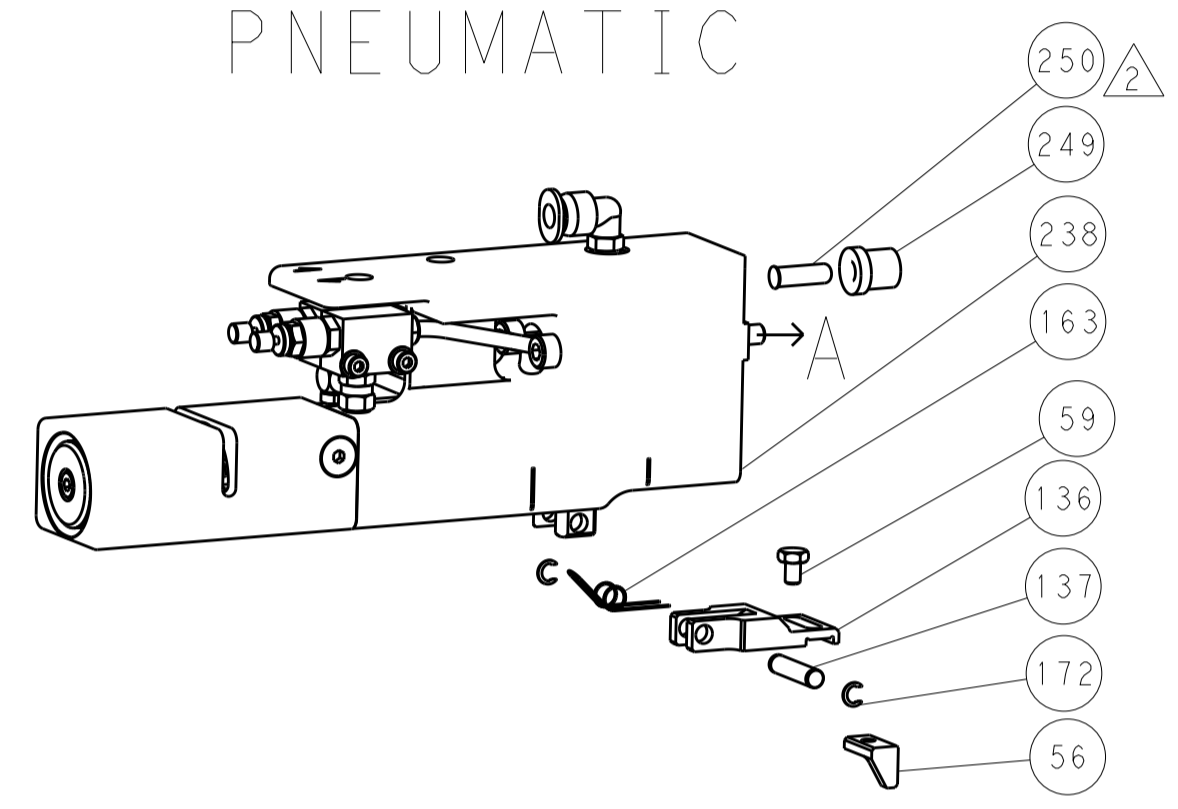


PACIFIC VERSION
Shown on sheets 3 of 4 & 4 of 4
(Atlantic version shown on sheets 1 of 4 & 2 of 4)

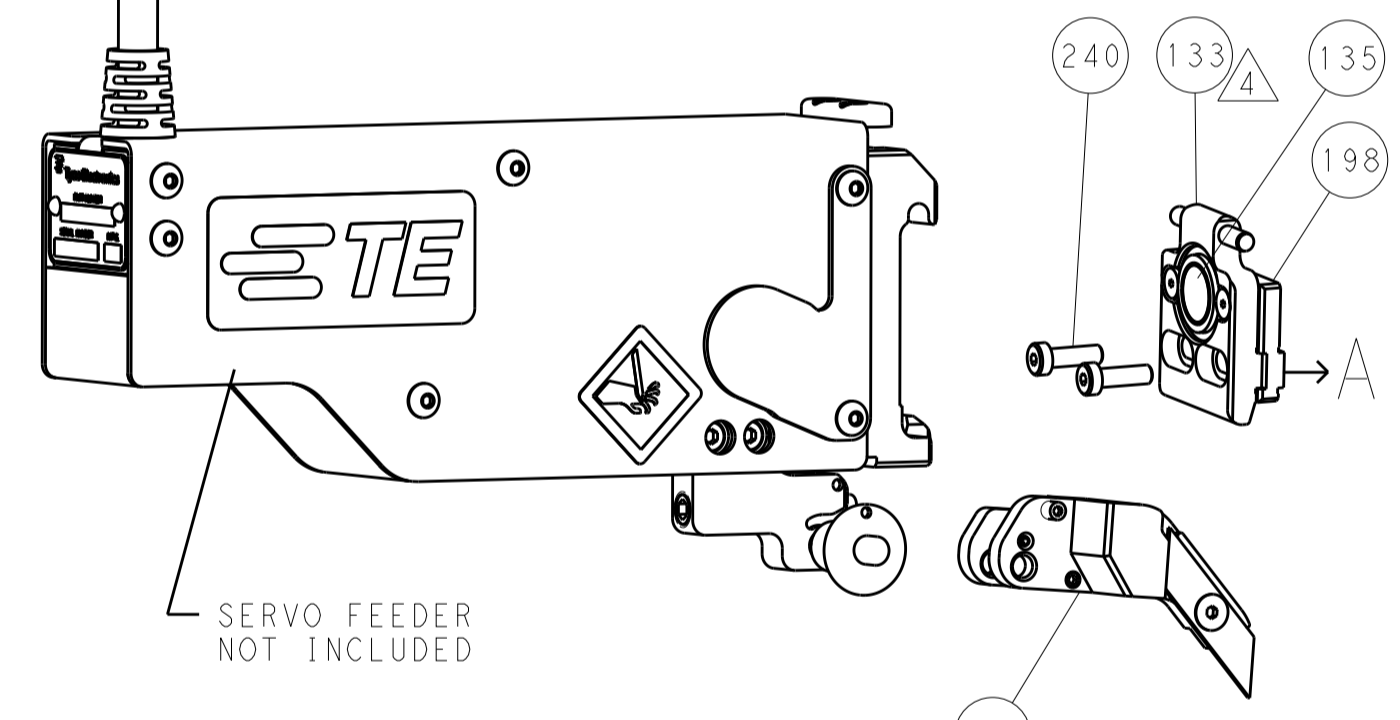
TE Connectivity logo and drawing information including dimensions, tolerances, materials, and customer accessible production drawing details.

LOC	DIST	REV	DATE	BY	APPV
A	66				

FEED TYPE PNEUMATIC

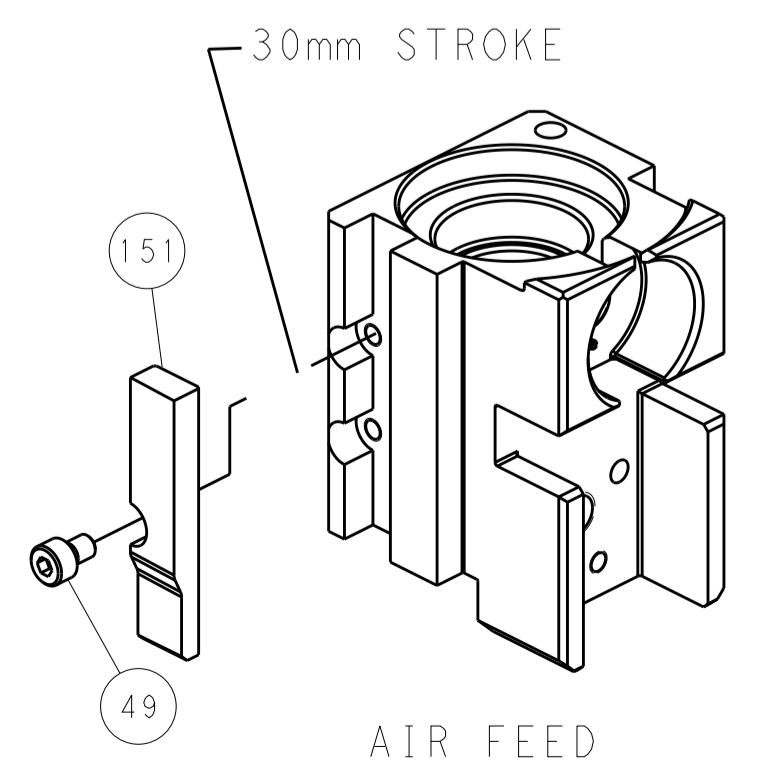


SERVO LATCH PLATE

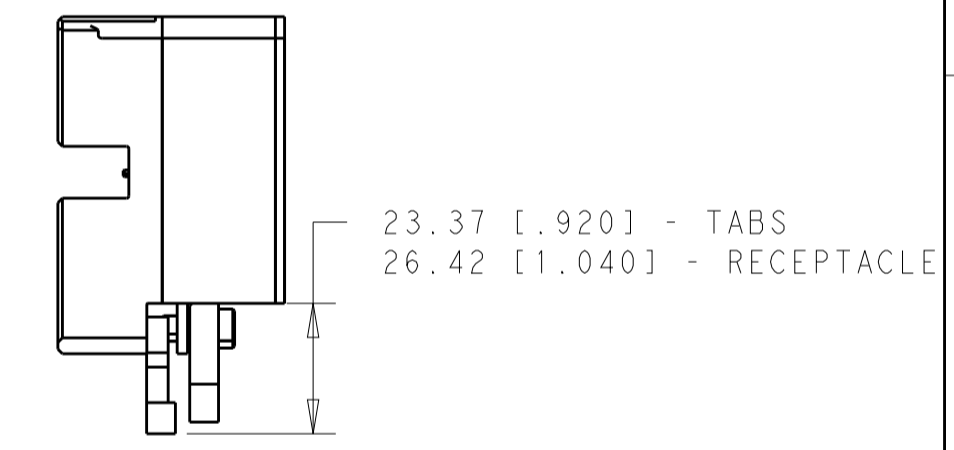
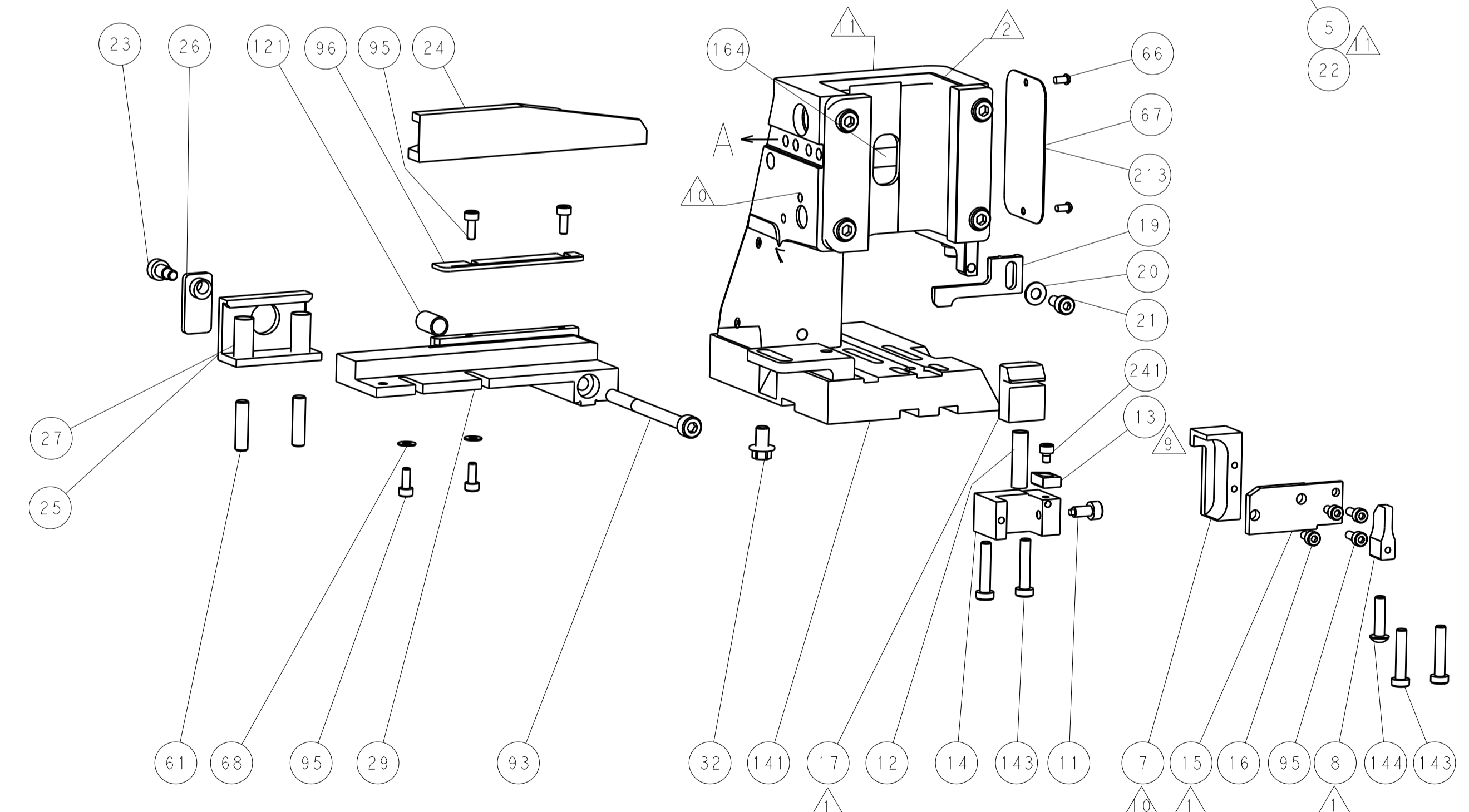
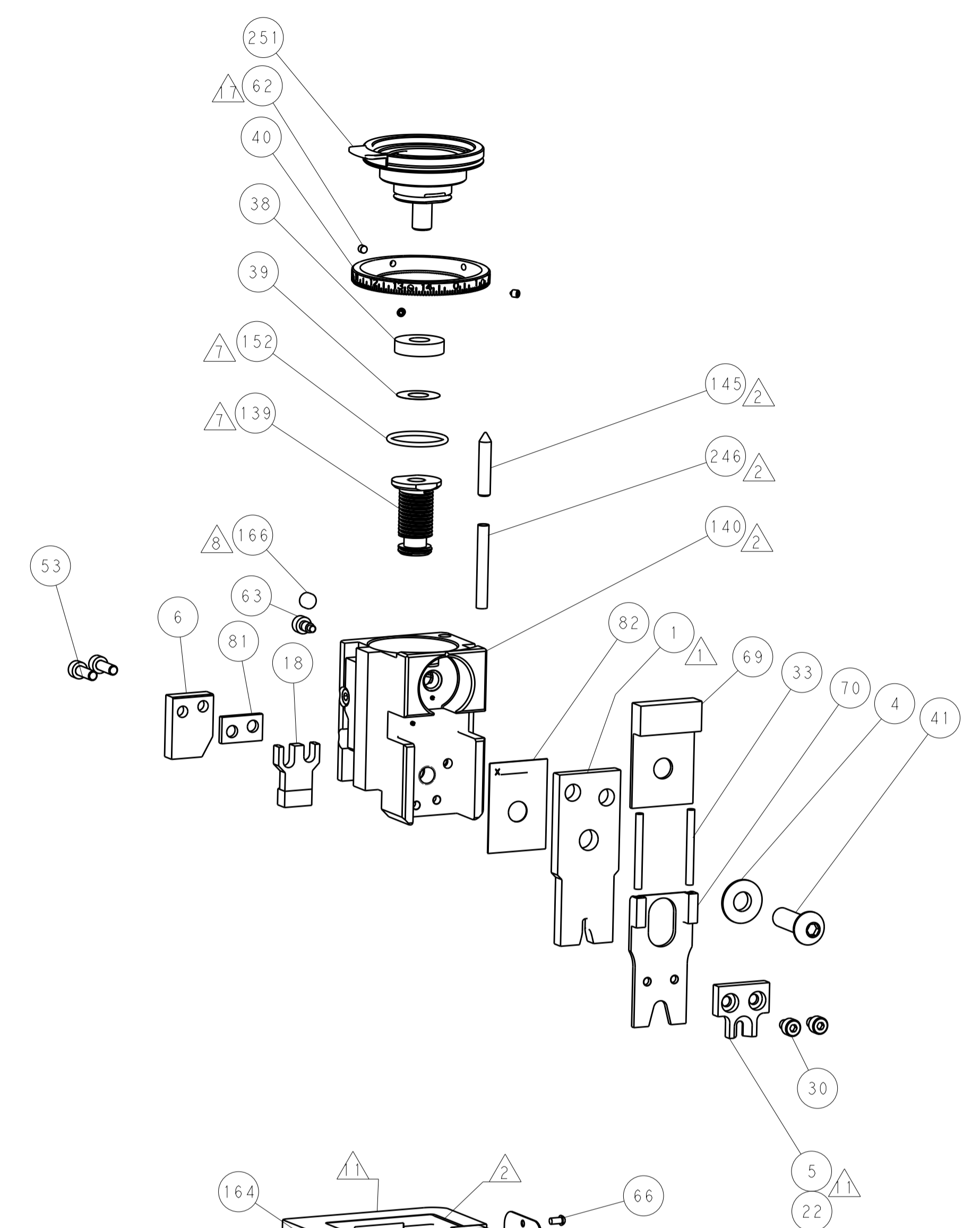


***FEED FINGER REPRESENTATION ABOVE MAY DIFFER FROM ACTUAL FEED FINGER THAT IS REQUIRED BY THIS APPLICATOR

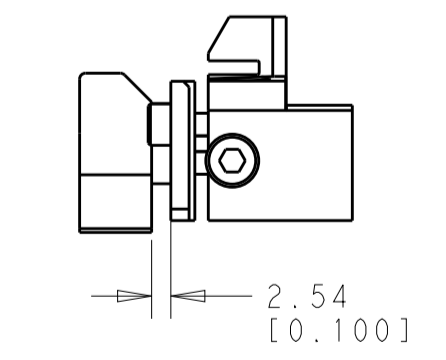
CAM POSITION



AIR FEED



HOLDDOWN SET-UP



LOWER TOOLING SET-UP

PACIFIC VERSION
 Shown on sheets 3 of 4 & 4 of 4
 (Atlantic version shown on sheets 1 of 4 & 2 of 4)

DIMENSIONS: mm 		TOLERANCES UNLESS OTHERWISE SPECIFIED: 0 PLC ±.1 1 PLC ±0.1 2 PLC ±0.02 3 PLC ±0.005 4 PLC ±0.0005 ANGLES ±.1		DWN B. WEAVER 12JUN2012 CHK G. HOFENER 12JUN2012 APVD T. ELBIN 12JUN2012		NAME: Ocean Side Feed Applicator SIZE: A CAGE CODE: 00779 DRAWING NO: C=2151693		RESTRICTED TO: - SCALE: 1:1 SHEET: 4 of 4 REV: A	
MATERIAL: - FINISH: -				WEIGHT: - CUSTOMER ACCESSIBLE PRODUCTION DRAWING		TE Connectivity Harrisburg, PA 17105-3608		SHEETS 1 & 2 ARE NOT REQUIRED FOR PACIFIC VERSION	

DIMENSIONING AND TOLERANCING PER ASME Y14.5M-2003