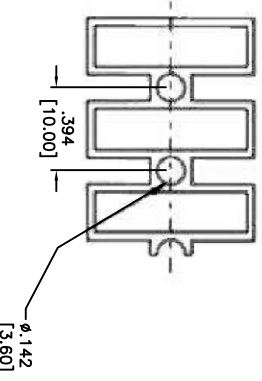
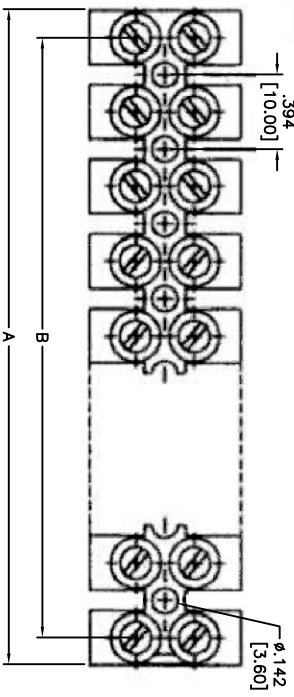
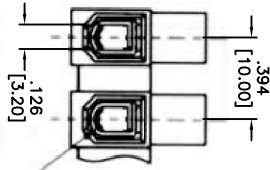
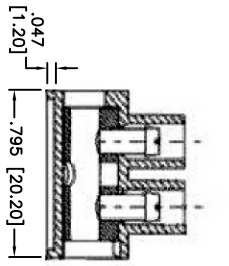
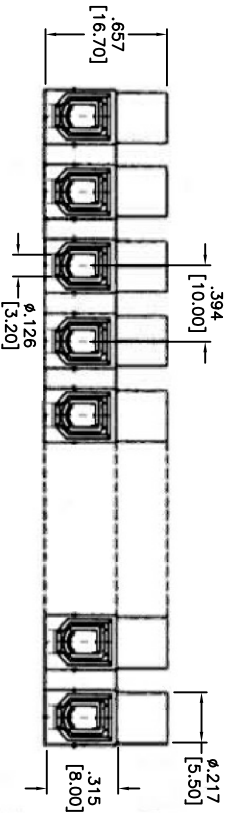


APPROVED: _____
 DATE: _____ TITLE: _____

Rev	AWO #	Description	Date	Appr
-	8372	RELEASED	1/24/08	
A		REDRAWN	12/23/13	AV/KW
B		ADDES SPEC.	6/12/14	HR/AY



1 Poles = 2 Screws

Poles	ADAM P/N
2	TDH-04
3	TDH-06
4	TDH-08
5	TDH-10
6	TDH-12
7	TDH-14
8	TDH-16
9	TDH-18
10	TDH-20
11	TDH-22
12	TDH-24

SPECIFICATIONS:

Material:
 Insulator: Nylon 66, rated UL 94V-0
 Insulator color: Off white
 Terminal: Brass, Nickel plated
 Screws: M3, Steel, Zinc plated
Electrical:
 Operating voltage: 600 VAC max
 Current rating: 30 Amps max
 Insulation Resistance: 500 Mohms min @ 500V DC
 Dielectric Withstanding Voltage: 2000V AC for 1 min.
Mechanical:
 Screw Torque Value: 5.1Kg-cm
 Wire Range: 2.5mm²
 Temperature Rating:
 Operating temperature: -40°C to +105°C
Environmental:
 Lead free, RoHS compliant.

A= .394 [10.00] x No. of Spaces + .268 [6.80]
 B= .394 [10.00] x No. of Spaces

UNLESS OTHERWISE SPECIFIED
 ALL DIMENSIONS ARE INCHES [MM]
 TOLERANCES: EXCEPT AS NOTED

INCHES	HOLES
.X ± .10	ØX ± .10
.XX ± .020	ØXX ± .015
.XXX ± .015	ØXXX ± .010

APPROVALS

DATE	DATE

DRAWN	SS	1/24/08
CHECKED		
APPROVED		

ADAM TECH
 909 Rahway Avenue, Union, NJ 07083
 Phone: 908-687-5000 Fax: 908-687-5710

TITLE: TERMINAL BLOCK, DUAL ROW, 10.0mm PITCH, BRASS SCREWS & HARDWARE

SIZE	PART NO.	REV.
X	TDH-XX	B

REF: S0003TT SCALE: NTS SHEET 1 OF 1

