

PMO Series *P-grade*

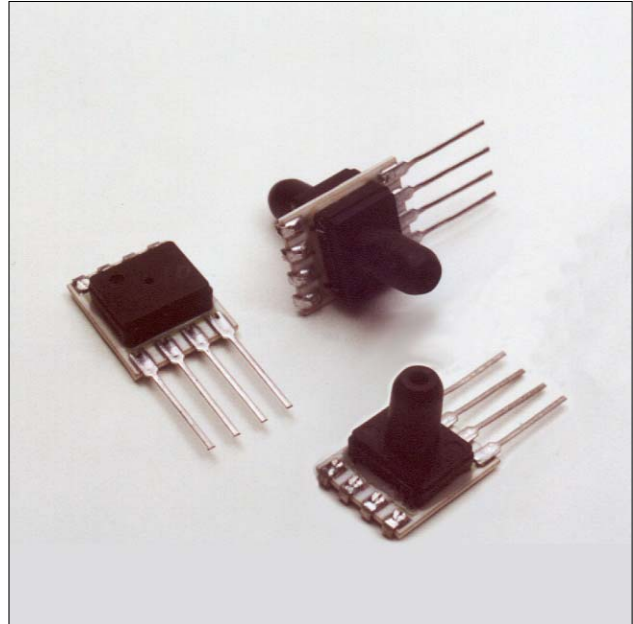
Precision compensated pressure sensors / mV-output

FEATURES

- Ranges from 4 inH₂O to 100 psi differential, gage or absolute
- Precision temperature compensated
- Calibrated offset and span
- Voltage excitation
- Excellent long term stability

MEDIA COMPATIBILITY

To be used with non-corrosive, non-ionic working fluids such as clean dry air, dry gases and the like.

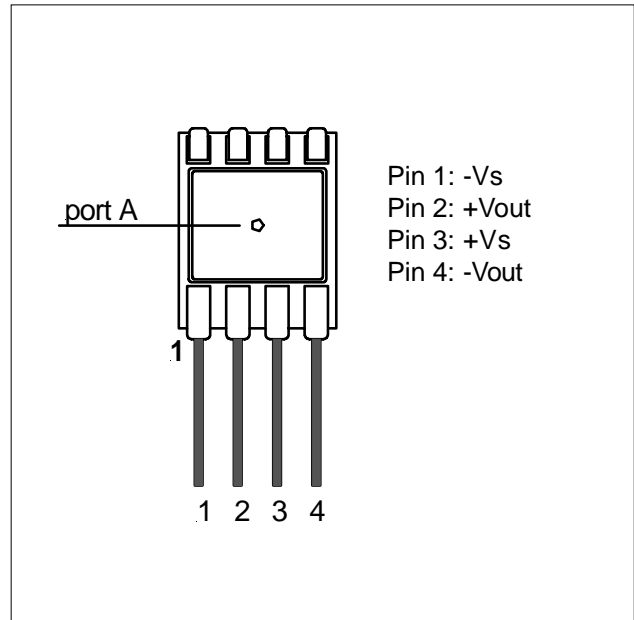


SPECIFICATIONS

Maximum ratings

Supply voltage V_s	16 V _{DC}
Lead temperature (soldering 2-4 sec.)	250 °C
Temperature ranges	
Compensated	
PMOH004...P	0...50 °C
all others	0...70 °C
Operating	-25...85 °C
Storage	-40...125 °C
Humidity limits (non-condensing)	0...95 % RH
Common mode pressure	50 psig

ELECTRICAL CONNECTION



PMO Series *P-grade*

Precision compensated pressure sensors / mV-output

PRESSURE SENSOR CHARACTERISTICS¹

Part no.	Operating pressure	Proof pressure ²	Full scale span ³		
			Min.	Typ.	Max.
PMOH004...P	0 ... 4 inH ₂ O	3 psi	24 mV	25 mV	26 mV
PMOP0x3...P	0 ... 0.3 psi	3 psi	19 mV	20 mV	21 mV
PMOH010...P	0 ... 10 inH ₂ O	5 psi	19 mV	20 mV	21 mV
PMOP001...P	0 ... 1 psi	10 psi	17.8 mV	18 mV	18.2 mV
PMOP005...P	0 ... 5 psi	20 psi	59 mV	60 mV	61 mV
PMOP015...P	0 ... 15 psi	60 psi	89 mV	90 mV	91 mV
PMOP030...P	0 ... 30 psi	60 psi	89 mV	90 mV	91 mV
PMOP100...P	0 ... 100 psi	150 psi	99 mV	100 mV	101 mV
PMOP015A...P	0 ... 15 psia	60 psia	89 mV	90 mV	91 mV
PMOP030A...P	0 ... 30 psia	60 psia	89 mV	90 mV	91 mV

COMMON PERFORMANCE CHARACTERISTICS¹

PMOH004...P

Characteristics	Min.	Typ.	Max.	Unit
Zero pressure offset			±0.5	mV
Combined non-linearity and hysteresis ⁴		±0.25	±0.5	%FS
Temperature effects (0...50 °C) ⁵	Offset		±0.5	mV
	Span		±1.0	%FS
Input resistance		5		kΩ
Output resistance		3		

All other devices

Characteristics	Min.	Typ.	Max.	Unit
Zero pressure offset			±0.5	mV
Combined non-linearity and hysteresis ⁴		±0.25	±0.5	%FS
Temperature effects (0...70 °C) ⁵	Offset		±0.5	mV
	Span		±1.0	%FS
Input resistance		5		kΩ
Output resistance		3		

Specification notes:

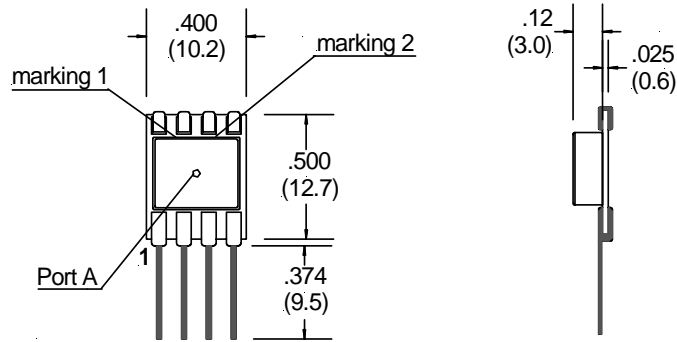
- Reference conditions: unless otherwise noted, supply voltage $V_s = 12\text{ V}$, $T_A = 25^\circ\text{C}$, common-mode pressure 0, pressure applied to port A.
- Proof pressure is the maximum pressure which may be applied without causing durable shifts of the electrical parameters of the sensing element.
- Full scale span is the algebraic difference between the output voltage at full-scale pressure and the output at zero pressure. The span is ratiometric to the supply voltage.
- Non-linearity refers to the **Best Straight Line** fit measured for offset pressure, full-scale pressure and ½ full-scale pressure.
- Shifts relative to 25°C.

PMO Series *P-grade*

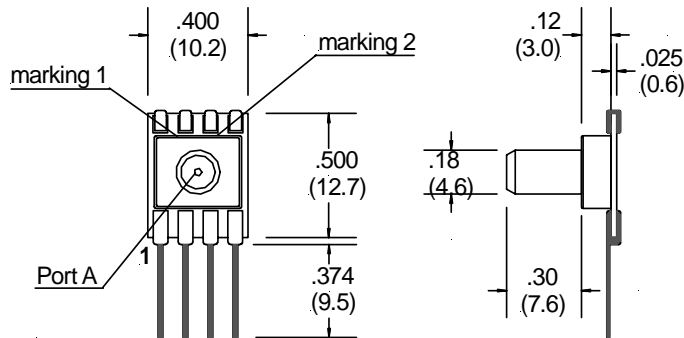
Precision compensated pressure sensors / mV-output

PHYSICAL DIMENSIONS

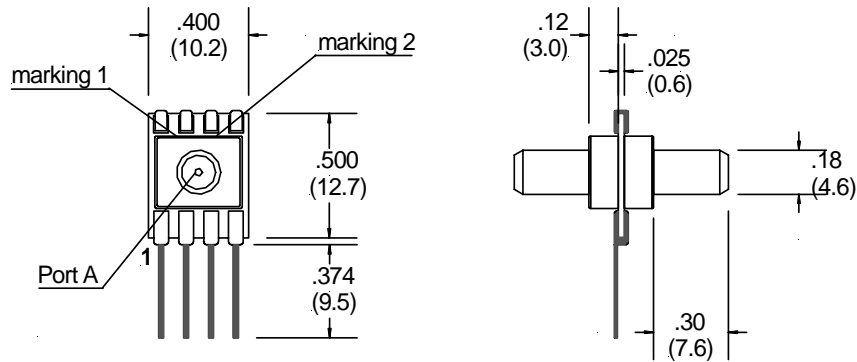
**Package version
AN/GN**



**Package version
AF/GF**



**Package version
DF**



dimensions in inches (mm)

Color dot marking		
Pressure range	Marking 1	Marking 2
0 ... 4 inH ₂ O	white	gold
0 ... 0.3 psi	pink	gold
0 ... 10 inH ₂ O	yellow	gold
0 ... 1 psi	green	gold
0 ... 5 psi	blue	gold
0 ... 15 psi	purple	gold
0 ... 30 psi	orange	gold
0 ... 100 psi	brown	gold

Sensortech reserves the right to make changes to any products herein. Sensortech does not assume any liability arising out of the application or use of any product or circuit described herein, neither does it convey any license under its patent rights nor the rights of others.