

FEATURES:

- AC Input 90~305Vac Nominal
- AC Inrush current: 10A @ 230 Vac Cold start
- Power Factor: > 0.95 @ 115 Vac / > 0.9 @ 230 Vac
- Protection: SCP / OVP / OCP
- High Operating Ambient Temp.: -20°C~+60°C
- Surge Protection: L-N 0.5 kV
- Safety: UL / CB / PSE
- EMI: FCC / CE
- Comply with Indoor/Outdoor Waterproof (IP 67)
- Warranty: 5 years (refer to LinkCom LinkCom warranty policy)
- RoHS Compliant



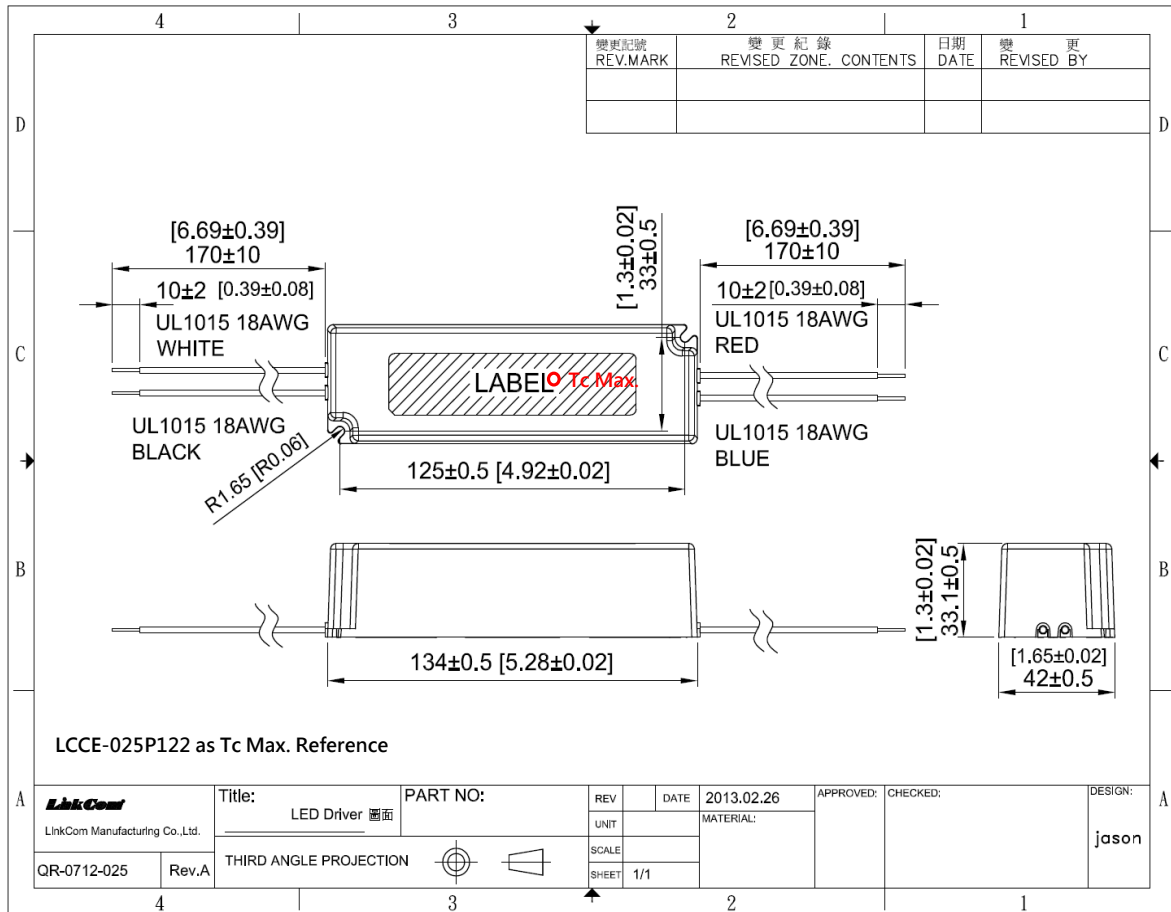
PRODUCT SPECIFICATION						
MODEL	DC OUTPUT POWER(W)	DC OUTPUT VOLTAGE(V)	OUTPUT CURRENT(A)	OUTPUT CURRENT TOLERANCE	EFFICIENCY	O/P NOISE(P-P,V)
LCCE-025U122-00	25.2	15-21	1.2	±5%	80%	4
LCCE-025U112-00	25.2	18-24	1.05	±5%	83%	3
LCCE-025U701-00	27.36	30-37	0.72	±5%	83%	3
LCCE-025U801-00	21	24-30	0.7	±5%	80%	2
LCCE-025U901-00	21.6	18-24	0.9	±5%	80%	2
LCCE-030U831-00	29.88	30-36	0.83	±5%	83%	3

ELECTRICAL SPECIFICATION	
INPUT VOLTAGE RANGE	90-305 Vac, 127-431 Vdc, Normal: 100-277 Vac
INPUT FREQUENCY	Range: 47-63Hz, Normal: 50-60Hz
ACTIVE POWER FACTOR	> 0.95 @ 115 Vac / > 0.9 @ 230 Vac at Full Load and Rated Output Voltage
THD	NA
TURN ON DELAY TIME	NA
AC CURRENT	0.4 A / 115 Vac 0.2 A / 230 Vac
INRUSH CURRENT (Max)	Cold Start 10 A @ 230 Vac
LEAKAGE CURRENT	< 0.7 mA / 240 Vac
SHORT CIRCUIT PROTECTION	SCP will restart automatically after the fault condition is removed
OVER VOLTAGE PROTECTION	Shut down and latch off o/p voltage, re-power on to recover
OVER TEMP. PROTECTION	NA
OVER CURRENT PROTECTION	Constant Current
OPERATING TEMP.	-20°C~+60°C
STORAGE TEMP.	-40°C~+80°C
RELATIVE HUMIDITY	10% to +90%, non-cond.
SAFETY	UL60950-1 / CB 61347-2-13/ PSE
EMI	EN 55015/ FCC PART 15
WITHSTAND VOLTAGE	NA
ISOLATION RESISTANCE	NA
DIMENSION (L*W*H)	134 * 42 * 33.1 mm 【5.28 * 1.65 * 1.3 inch】

- (1) All parameters specified at 230 Vac input unless otherwise noted.
- (2) All specifications Typical at 25°C, unless otherwise noted, at normal line and load.
- (3) Ripple and Noise measured directly at pins/terminals at nom. load, 0.1uF bypass and 47uF electrolytic, pk-pk at 20MHz bandwidth.
- (4) Specified for free-air convection cooling.
- (5) Minimum load is NOT required for proper operation.
- (6) 100% Production Tested.

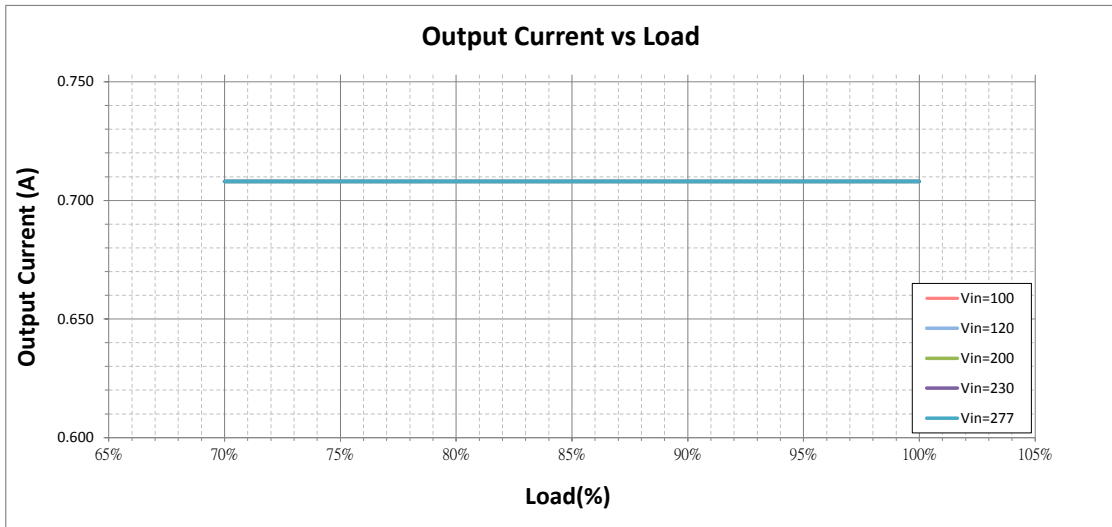
* REFERENCE: www.linkcom.com.tw
 * Please contact sales@linkcom.com.tw, sales@linkcomusa.com for more information

DIMENSIONS

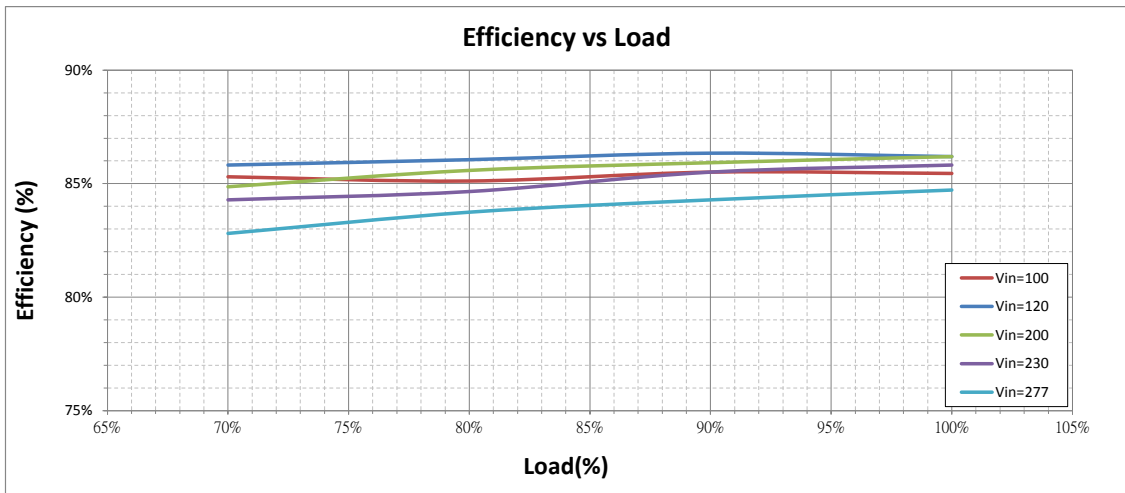


* REFERENCE: www.linkcom.com.tw

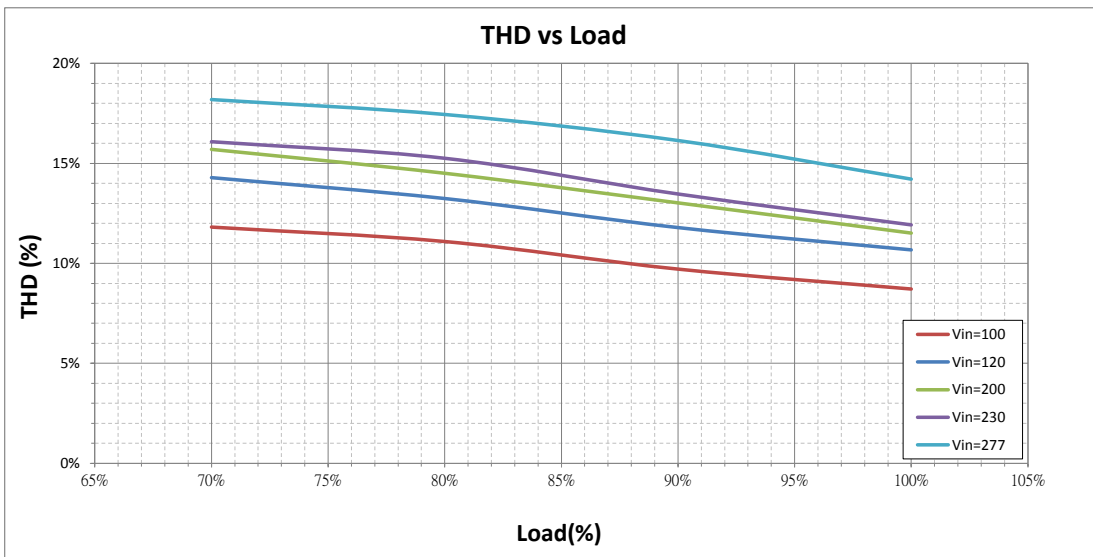
Output Current vs. Load (LCCE-025U701-29G)



Efficiency vs. Load (LCCE-025U701-29G)



THD vs. Load (LCCE-025U701-29G)



PF vs. Load (LCCE-025U701-29G)

