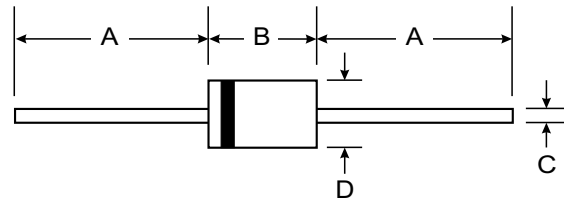


### Features

- High switching speed: max. 4 ns
- Continuous reverse voltage: max. 30 V
- Repetitive peak reverse voltage: max. 35 V
- Pb / RoHS Free



DO-35		
Dim	Min	Max
A	25.40	—
B	—	4.00
C	—	0.60
D	—	2.00
All Dimensions in mm		

### Mechanical Data

- **Case:** DO-35 Glass Case
- **Weight:** approx. 0.13g

### MAXIMUM RATINGS AND ELECTRICAL CHARACTERISTICS

@ T<sub>A</sub> = 25°C unless otherwise specified

Parameter	Symbol	Value	Unit			
Maximum Repetitive Peak Reverse Voltage	V <sub>RRM</sub>	35	V			
Maximum Continuous Reverse Voltage	V <sub>RM</sub>	30	V			
Maximum Continuous Forward Current	I <sub>F</sub>	120	mA			
Maximum Forward Current	I <sub>FM</sub>	360	mA			
Maximum Power Dissipation	P <sub>D</sub>	300	mW			
Maximum Non-repetitive Peak Forward Current	I <sub>FSM</sub>	0.5	A			
Maximum Junction Temperature	T <sub>J</sub>	175	°C			
Storage Temperature Range	T <sub>S</sub>	-65 to + 200	°C			
Parameter	Symbol	Test Condition	Min	Typ	Max	Unit
Reverse Current	I <sub>R</sub>	V <sub>R</sub> = 30 V	-	-	0.5	μA
Forward Voltage	V <sub>F</sub>	I <sub>F</sub> = 100 mA	-	-	1.3	V
Diode Capacitance	C <sub>d</sub>	f = 1MHz ; V <sub>R</sub> = 0	-	-	3.0	pF
Reverse Recovery Time	T <sub>rr</sub>	I <sub>F</sub> = 10 mA to I <sub>R</sub> = 60 mA R <sub>L</sub> = 100 Ω ; measured at I <sub>R</sub> = 1mA	-	-	4	ns