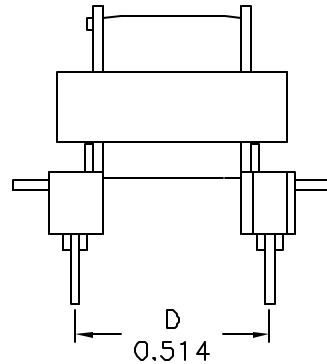
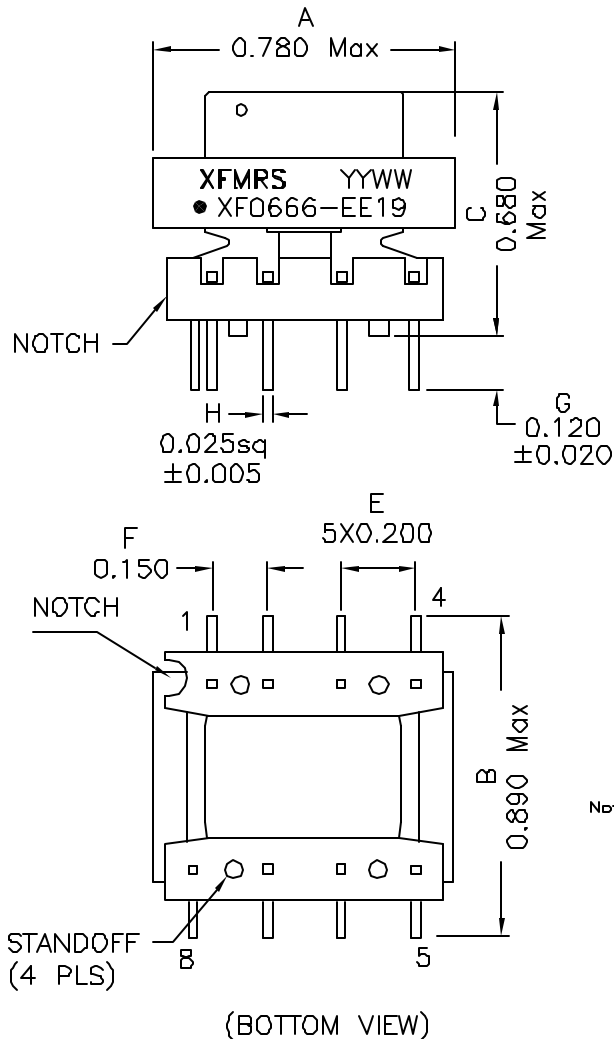
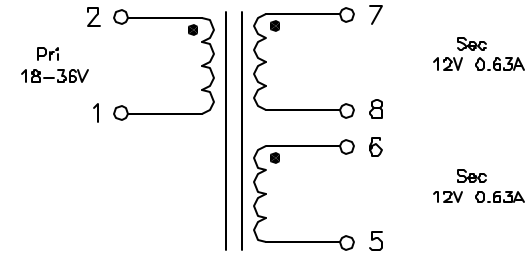


## 1. Mechanical Dimensions:



## 2. Schematic:



## 3. Electrical Specifications: @25°C

OCL: Pins 2-1 66uH±15% @100KHz 0.10V  
 Pins 2-1 55uH Min @100KHz 0.1V 3Adc  
 Q: Pins 2-1 20 Min @100KHz 0.1V  
 LL: Pins 2-1 3.0uH Max @100KHz 0.10V Short Secs  
 DCR: Pins 2-1 0.090 Ohms Max  
 Pins 7-8 0.200 Ohms Max  
 Pins 6-5 0.240 Ohms Max  
 Ipeak: 3Adc  
 Volt-Time Product: 499.5V-µS  
 Turn Ratio(±2%): (2-1):(7-8) 1:1.2  
 (2-1):(6-5) 1:1.2  
 HIPOT: 1500Vrms, Pri to Sec  
 500Vrms, All Wdgs. to Core

### Notes:

- Solderability: Leads shall meet MIL-STD-202G, Method 208H for solderability.
- Flammability: UL94V-0
- ASTM oxygen index: > 28%
- Insulation System: Class B 130°C. UL file E151556
- Operating Temperature Range: All listed parameters are to be within tolerance from -40°C to +85°C
- Storage Temperature Range: -55°C to +125°C
- Aqueous wash compatible
- Electrical and mechanical specifications 100% tested
- RoHS Compliant Component

DOC. REV: A/2

XFMRS Inc www.XFMRS.com	Title: Transformer		
	UNLESS OTHERWISE SPECIFIED	P/N: XF0666-EE19	REV. A
TOLERANCES: .xxx ±0.010	DWN.	Mei Chen	Apr-19-10
Dimensions in Inch	CHK.	YK Liao	Apr-19-10
SHEET 1 OF 1	APP.	Joe Huff	Apr-19-10

**PROPRIETARY** Document is the property of XFMRS Group & is not allowed to be duplicated without authorization.