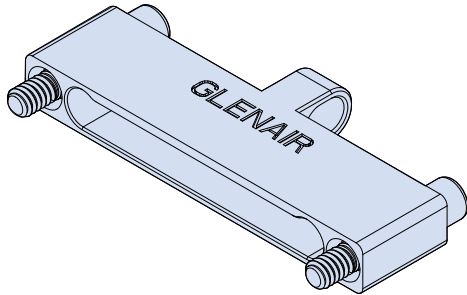


899-010 Single Row Nano Rectangular EMI Cover



Glenair EMI Covers offer the same EMI protection as mated connectors, from electro magnetic interference, as a result of electromagnetic induction emitted from intended external sources such as radio transmissions or electromagnetic radiation from unintentional sources such as electric power transmission lines. These covers feature a solid one piece construction machined from your choice of aluminum, stainless steel or titanium. Standard aluminum finishes include cadmium or electroless nickel plating. Available with or without lanyard attachment. Covers are in accordance with MIL-DTL-32139/1 and MIL-DTL-32139/2

How to Order Nano Single Row EMI Cover

Sample Part Number	899-010	-25	P	A2	J	F	3	-126
Series	899-010 EMI Single Row, Nanominiature Cover							
Insert Arrangement	5, 9, 15, 21, 25, 31, 37, 51; See Table II for dimensions							
Body Style	P = Plug S = Receptacle							
Cover Material and Finish	A1 - Aluminum Shell, Cadmium Plating				S - Stainless Steel, Passivated			
	A2 - Aluminum Shell, Electroless Nickel Plating				T - Titanium, Unplated			
Hardware	J - Jacksrew		T - Female Threaded					
	Female threads are available on plug covers only if cover material is titanium or stainless steel.							
Attachment Type	N - No Lanyard							
	F - Stainless Steel Wire Rope, Nylon jacket, Black, Ø .034							
	G - Flexible Nylon Rope, Ø .090							
	H - Stainless Steel Wire Rope, Teflon Jacket, Black, Ø .034							
Attachment Length	Attachment Length in Inches (Omit for No Lanyard)							
Attachment Diameter	See Table I; (Omit for No Lanyard)							

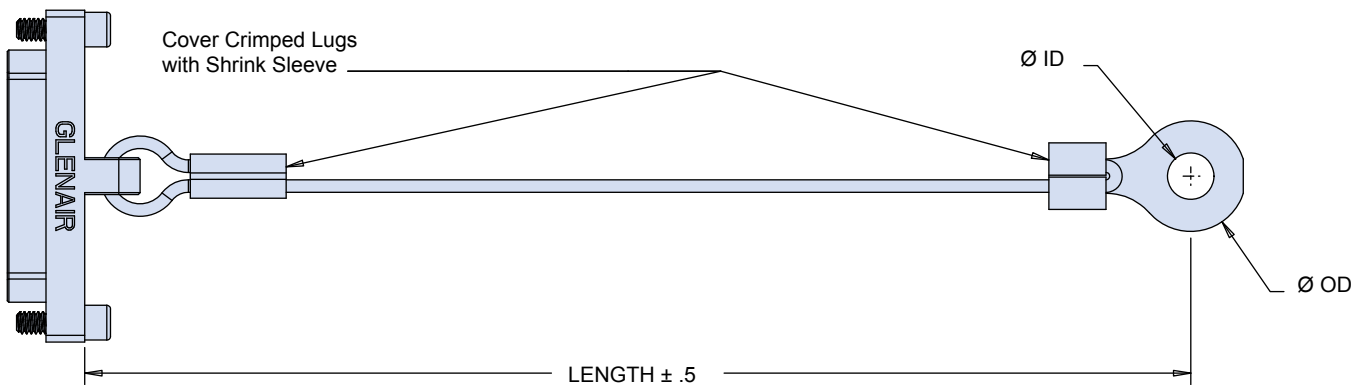


Table I: Attachment Diameter

Dash No.	-098	-126	-140	-156	-167	-188	-197	-218
ID	Ø .098 (2.49)	Ø .126 (3.20)	Ø .140 (3.56)	Ø .156 (3.96)	Ø .167 (4.24)	Ø .188 (4.78)	Ø .197 (5.00)	Ø .223/.218 (5.66/5.54)
OD	Ø .300 (7.62)	Ø .300 (7.62)	Ø .300 (7.62)	Ø .300 (7.62)	Ø .300 (7.62)	Ø .300 (7.62)	Ø .300 (7.62)	Ø .300 (7.62)

Dimensions in inches (millimeters) and are subject to change without notice.

Single Row Connectors

899-010

Single Row Nano Rectangular EMI Cover

Table II: Single Row Nano Cover Dimensions

Plug Cover				Receptacle Cover			
<p>SECTION B-B Plug</p>				<p>SECTION A-A Receptacle</p>			
<p>Plug with "T" Female Thread Option Titanium or Stainless Steel Shells Only</p>				<p>Receptacle With "J" Jackscrew Option</p>			
Size	A	B Bsc.	C Bsc.	Size	A	B Bsc.	C Bsc.
5P	0.400 (10.16)	0.295 (7.493)	0.184 (4.67)	25P	0.900 (22.86)	0.795 (20.193)	0.684 (17.37)
5S	0.400 (10.16)	0.295 (7.493)	0.185 (4.70)	25S	0.900 (22.87)	0.795 (20.193)	0.685 (17.40)
9P	0.500 (12.7)	0.395 (10.033)	0.284 (7.21)	31P	1.050 (26.67)	0.945 (24.00)	0.834 (21.18)
9S	0.500 (12.7)	0.395 (10.033)	0.285 (7.24)	31S	1.050 (26.67)	0.945 (24.00)	0.835 (21.21)
15P	0.650 (16.51)	0.545 (13.84)	0.434 (11.02)	37P	1.200 (30.48)	1.095 (27.81)	0.984 (24.99)
15S	0.650 (16.51)	0.545 (13.84)	0.435 (11.50)	37S	1.200 (30.48)	1.095 (27.81)	0.985 (25.02)
21P	0.800 (20.32)	0.695 (17.65)	0.584 (14.83)	51P	1.550 (39.37)	1.445 (36.70)	1.334 (33.88)
21S	0.800 (20.32)	0.695 (17.65)	0.585 (14.86)	51S	1.550 (39.37)	1.445 (36.70)	1.335 (33.91)

Dimensions in inches (millimeters) and are subject to change without notice.

© 2013 Glenair, Inc.

Series 89 Nano Catalog

U.S. CAGE Code 06324/0CA77

Printed in U.S.A.

GLENAIR, INC. • 1211 AIR WAY • GLENDALE, CA 91201-2497 • 818-247-6000 • FAX 818-500-9912
www.glenair.com D-10 E-Mail: sales@glenair.com