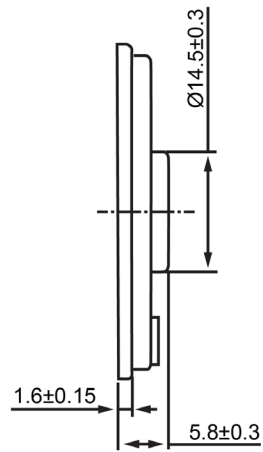
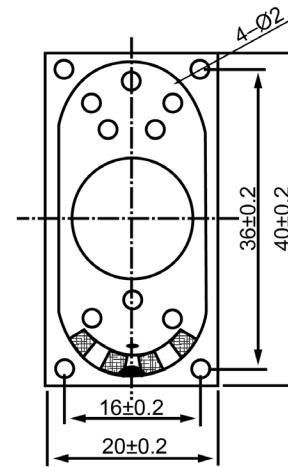


SIDE VIEW



BOTTOM VIEW



Specifications			Notes	Revision History					
Description	Value	Unit		Version	Description		Date	Approved	
Shape	Rectangle		1) All dimensions are in mm unless otherwise noted 2) All parts meet RoHS	1	Released from Engineering		2/5/2014	J.S	
Resonant Frequency	450	(Hz)							
Frequency Range	450 ~ 20,000	(Hz)							
SPL @ 10cm	89	(dBA)							
Impedance	8	(Ohm)							
Cone Material	Cloth								
Nominal Power	1	(W)							
Max Power	2	(W)							
Mount Type	Frame Mount								
Operating Temperature	- 40 ~ + 70	°C							
Storage Temperature	- 40 ~ + 80	°C							
Weight	7.6	(g)							



Dynamic Speaker

SC400408-1