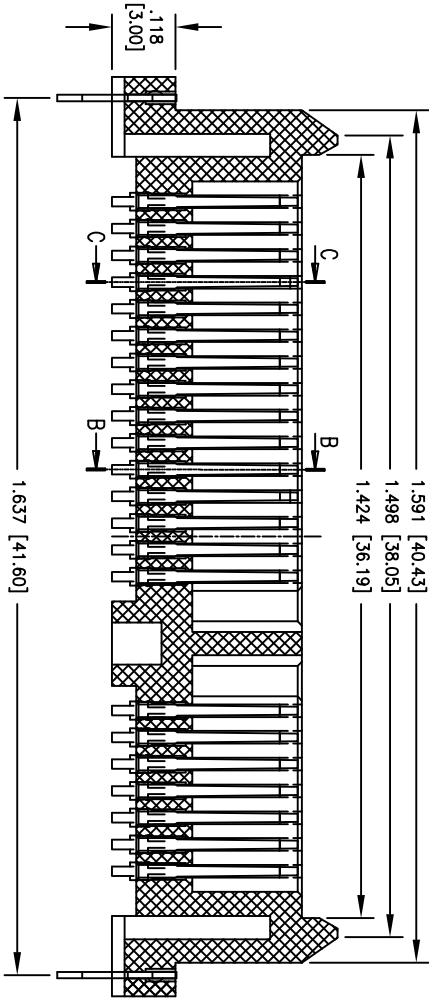
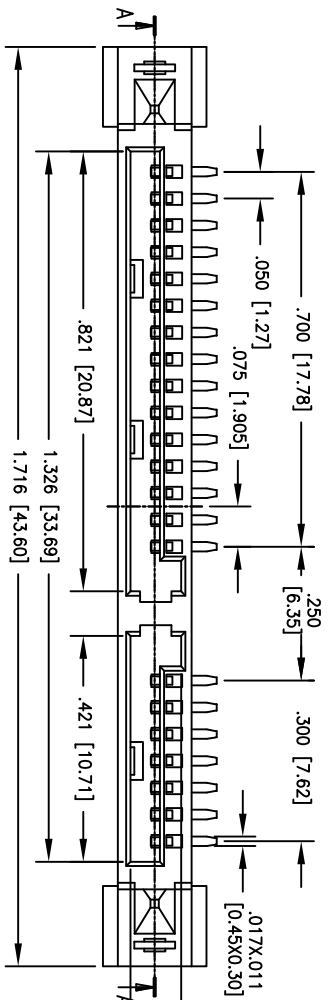
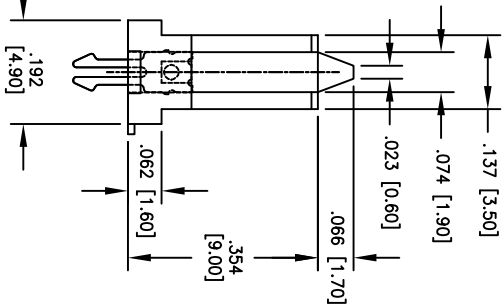


APPROVED: _____
 DATE: _____ TITLE: _____

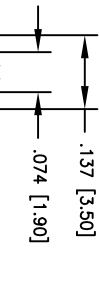
Rev	AWO #	Description	Date	Appr
-		RELEASED	12/12/06	
A		REVISED DIM.	9/03/09	



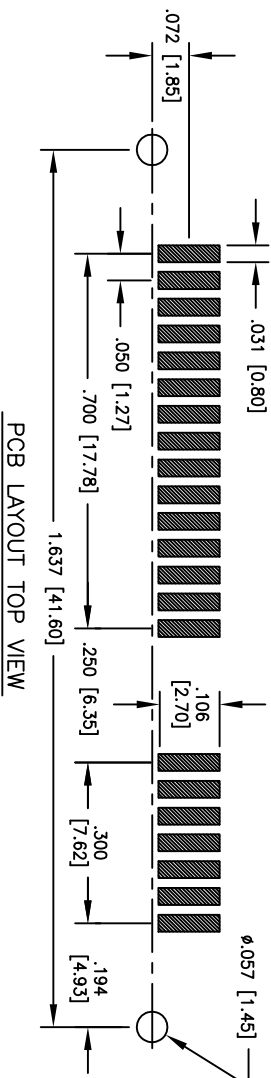
SECT A-A



SECT B-B



SECT C-C



PCB LAYOUT TOP VIEW

SPECIFICATIONS:

Material: Insulator: LCP, rated UL 94V-0

Insulator color: Black

Contacts: Phosphor Bronze

Plating:

Gold Flash over Nickel underplate on contact area, Tin over Copper underplate on solder tails

Electrical:

Operating voltage: 100 VAC max

Current rating: 1.5 Amps max

Contact resistance: 30 mohms max

Insulation resistance: 1,000 Mohms min @ 500 VDC

Dielectric withstanding voltage: 500 VAC for 1 minute

Temperature Rating:

Operating temperature: -55°C to +125°C

Environmental:

Lead free, RoHS compliant

Recommended soldering temp: 260°C for 5 sec.



ADAM TECH

909 Railway Avenue, Union, NJ 07083
 Phone: 908-687-5000 Fax: 908-687-5710

TITLE: SATA 7+15P DIP SINGLE ROW TYPE
 FEMALE

UNLESS OTHERWISE SPECIFIED ALL DIMENSIONS ARE INCHES [MM] TOLERANCES: EXCEPT AS NOTED		DRAWN: BW		DATE: 12/11/06	
INCHES: .X ± .10 .XX ± .020 .XXX ± .015		Holes: ØX ± .10 ØXX ± .015 ØXXX ± .010		APPROVALS:	
CHECKED		SIZE	PART NO.	SCALE	SHEET 1 OF 1
APPROVED		X	SATAN-PM-VT-SMT-02	NIS	A