

New Jersey Semi-Conductor Products, Inc.

20 STERN AVE.
 SPRINGFIELD, NEW JERSEY 07081
 U.S.A.

TELEPHONE: (973) 376-2922
 (212) 227-6005
 FAX: (973) 376-8960

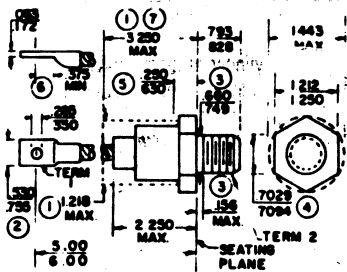
PARAMETERS

SI RECTIFIER, 200A < I(O)/I(F) ≤ 500A 1N3587

Description: Si Rectifier, 200A < I(O)/I(F) ≤ 500A

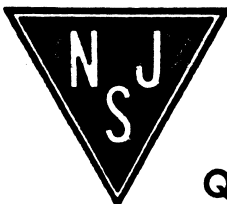
| | |
|--------------------------------|---------|
| Manufacturer..... | |
| Mil/High-Rel? (Y/N)..... | |
| I(out) (If AVG) Max..... | 400 |
| @Temp. (test) (x°C)..... | 120# |
| VRRM..... | 200 |
| 1-Cycle Surge Current (A)..... | |
| Vf Max..... | 1.1 |
| @If (test)..... | 520 |
| @Temp. (test) for Vf..... | 25# |
| Ir @25x°C..... | |
| @Volts (test) (V)..... | 200 |
| Ir @ Diff. Temp (A)..... | 75m |
| @Temp (test) (x°C)..... | 25# |
| Oper. Temp (x°C) Max..... | 190u |
| Pkg Style..... | StF-3/4 |
| Surface Mounted (Y/N)..... | N |

DO-9



NOTES:

1. The device with exception of the hexagon, thread, and flexible lead extension lies within the cylinder defined by 1.218 and length 3.25.
2. Angular orientation of terminal with respect to hexagonal portion is undefined. Square or radius on end of terminal is optional.
3. Length of incomplete or undercut threads.
4. Pitch diameter of 3/4-16 UNF-2A (coated) threads (ASA B1.1-1960).
5. A chamfer (or undercut) on one or both ends of the hexagonal portion is optional.
6. Minimum flat.
7. Seated height with lead bent at right angle.



Quality Semi-Conductors