

**HIGH DENSITY 26 POSITION  
METAL SHELL RECEPTACLES  
FOR RIGHT ANGLE  
PCB MOUNTING**



**PHYSICAL PROPERTIES**

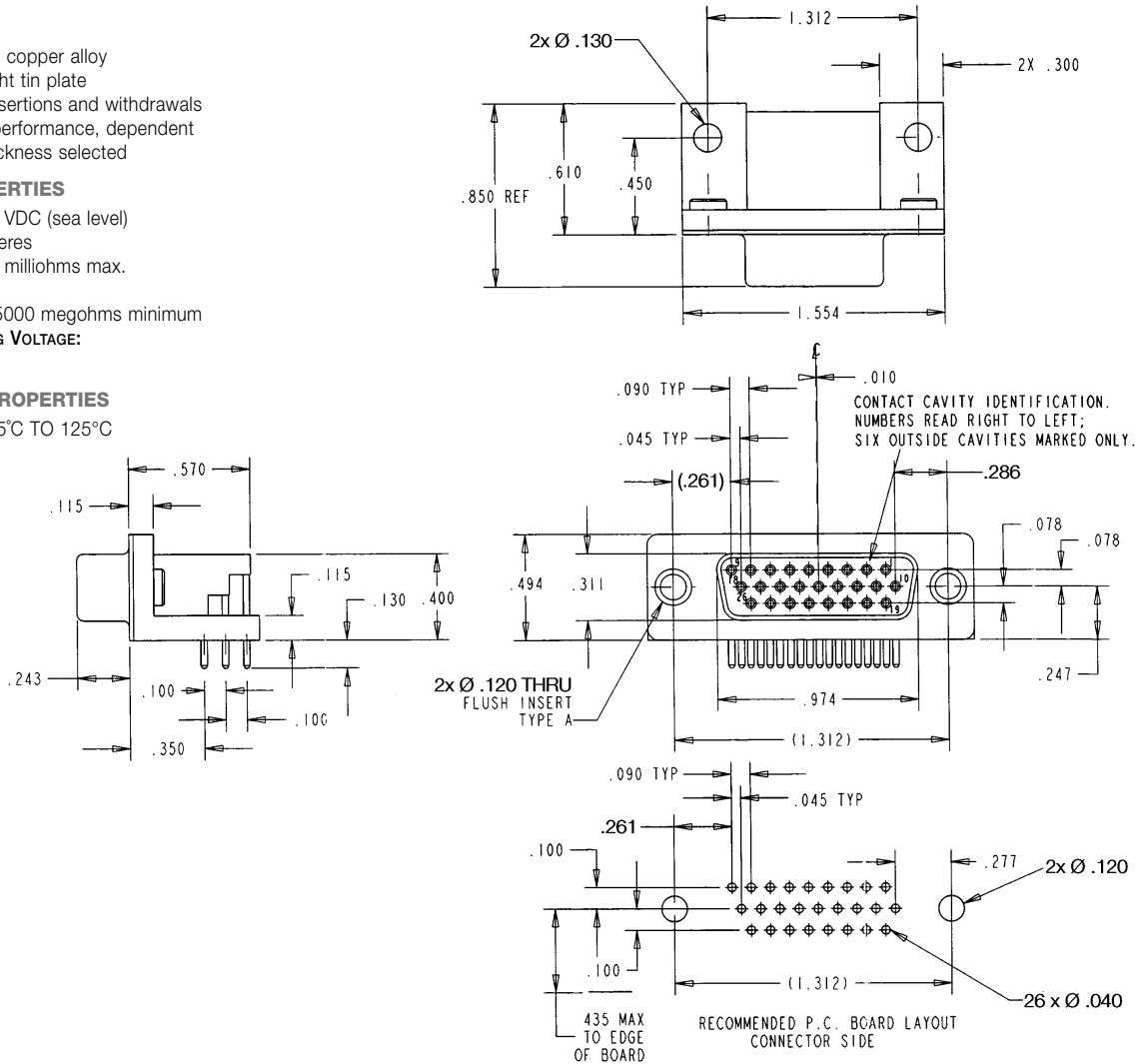
**INSULATION MATERIAL:** Glass filled thermoplastic rated UL 94V-0  
**COLOR:** Black  
**CONTACTS:** High strength copper alloy  
**METAL SHELL:** Steel, bright tin plate  
**DURABILITY:** up to 500 insertions and withdrawals without degradation of performance, dependent upon contact plating thickness selected

**ELECTRICAL PROPERTIES**

**OPERATING VOLTAGE:** 600 VDC (sea level)  
**CURRENT RATING:** 5 Amperes  
**CONTACT RESISTANCE:** 10 milliohms max. @ rated current  
**INSULATION RESISTANCE:** 5000 megohms minimum  
**DIELECTRIC WITHSTANDING VOLTAGE:** 1000 VAC minimum

**ENVIRONMENTAL PROPERTIES**

**TEMPERATURE RATING:** -55°C TO 125°C



**Ordering Information**

BULKHEAD MOUNTING STYLE	CONTACT PLATING: 30 MICROINCH GOLD			CONTACT PLATING: GOLD FLASH		
	.125" THRU	PLASTIC SNAPLATCH	METAL SNAPLATCH	.125" THRU	PLASTIC SNAPLATCH	METAL SNAPLATCH
26 125" Thru Hole	HDR26RA29A	HDR26RA29AP	HDR26RA29AS	HDR26RA24A	HDR26RA24AP	HDR26RA24AS
26 4-40 Standoff	HDR26RA29B	HDR26RA29BP	HDR26RA29BS	HDR26RA24B	HDR26RA24BP	HDR26RA24BS
26 4-40 Flush	HDR26RA29C	HDR26RA29CP	HDR26RA29CS	HDR26RA24C	HDR26RA24CP	HDR26RA24CS