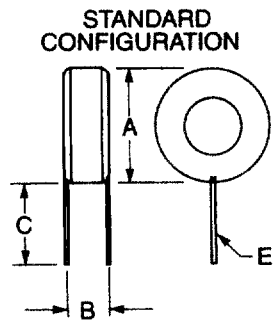
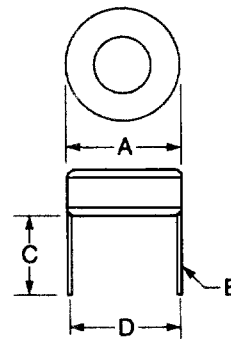


# TT 600 SERIES TOROIDAL CHOKES



OPTIONAL CONFIGURATION;  
ADD SUFFIX 'H'  
TO PART NO.



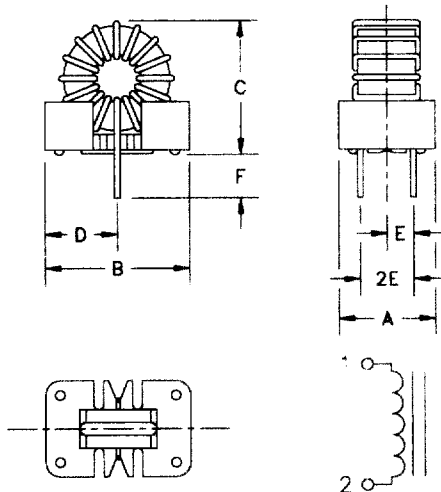
TM Part No.	Electrical specifications			Dimensions—Inches				
	Inductance @ 1 KHz ±10%	Maximum DC Resistance (Ω)	Current rating* amps DC	A (Nom)	B (Nom)	C (Nom)	D (Nom)	E (±.005)
TT050AT1002	10μH	.010	3.0	0.62	.25	.50	0.56	.036
TT121AT1002	10μH	.015	6.0	0.82	.32	.50	0.72	.046
TT050AT2502	25μH	.020	2.0	0.62	.25	.50	0.56	.032
TT121AT2502	25μH	.025	4.0	0.82	.32	.50	0.75	.040
TT059AT2502	25μH	.020	6.0	1.10	.37	.50	1.02	.051
TT894AT2502	25μH	.015	10.0	1.30	.56	.75	1.20	.064
TT050AT5002	50μH	.030	1.5	0.62	.25	.50	0.56	.028
TT121AT5002	50μH	.035	3.0	0.82	.32	.50	0.75	.036
TT059AT5002	50μH	.030	4.5	1.10	.40	.50	1.02	.046
TT894AT5002	50μH	.020	7.0	1.30	.55	.75	1.15	.057
TT050AT7502	75μH	.045	1.0	0.62	.25	.50	0.56	.025
TT121AT7502	75μH	.050	2.5	0.82	.32	.50	0.75	.032
TT059AT7502	75μH	.035	4.0	1.10	.40	.50	1.02	.040
TT894AT7502	75μH	.025	6.0	1.30	.55	.75	1.20	.051
TT050AT1003	100μH	.055	1.0	0.62	.25	.50	0.56	.025
TT121AT1003	100μH	.070	2.0	0.82	.32	.50	0.72	.028
TT059AT1003	100μH	.050	3.0	1.10	.40	.50	1.02	.036
TT894AT1003	100μH	.030	5.0	1.30	.56	.75	1.20	.051
TT121AT2503	250μH	.155	1.5	0.85	.35	.50	0.75	.023
TT059AT2503	250μH	.090	2.0	1.15	.40	.50	1.02	.032
TT894AT2503	250μH	.070	3.0	1.25	.56	.75	1.20	.040
TT059AT5003	500μH	.180	1.5	1.15	.40	.50	1.05	.028
TT894AT5003	500μH	.130	2.0	1.30	.56	.75	1.20	.032
TT059AT7503	750μH	.250	1.0	1.15	.40	.50	1.05	.025
TT894AT7503	750μH	.170	2.0	1.30	.60	.75	1.25	.032
TT894AT1004	1000μH	.220	1.5	1.30	.60	.75	1.20	.028

\*Current that will cause a maximum 15% drop in inductance

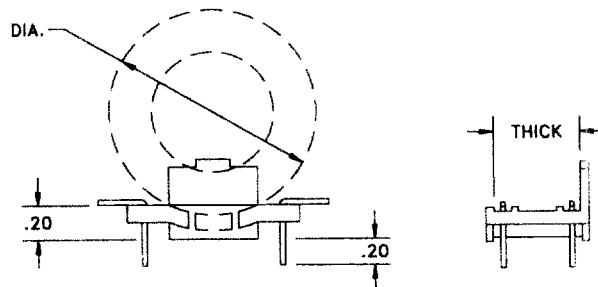
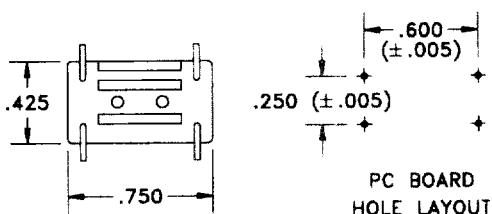
# MOUNTING CONFIGURATIONS FOR TT600 SERIES TOROIDAL CHOKES

- Base material meets flammability requirements of UL 94V-0
- Mechanically rigid mount
- PC Board – Automatic insertability
- Lowest cost

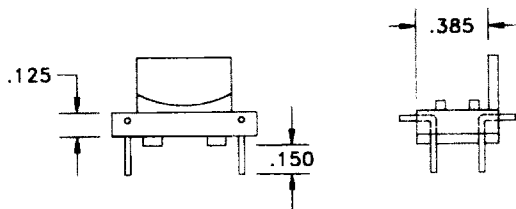
## COIL INSTALLED IN COILMOUNT



STANDARD PACKAGE	A	B	C	D	E	F
	NOM. ±.005	NOM.	NOM.	← TYPICAL →		
KM-1.0	.340	.578	.60	.29	.110	.110
KM-2.0	.450	.648	.65	.325	.150	.110
KM-3.0	.450	.828	.85	.415	.150	.110
KM-4.0	.600	.948	.95	.475	.225	.110
KM-5.0	.700	1.248	1.25	.625	.250	.110

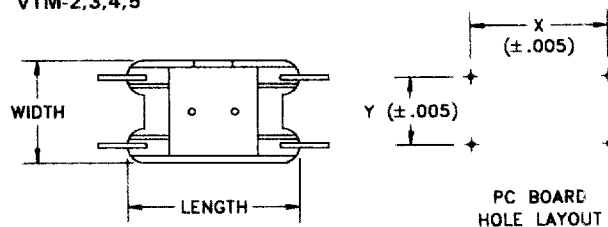


PART NO.  
VTM-2,3,4,5



PART NO.  
VTM-1

4 TERMINALS: Copper Wire  
.040 Dia. (#18 AWG)  
100% Tin Plated



4 TERMINALS: Copper Wire  
.040 Dia. (#18 AWG)  
100% Tin Plated

## VERTICAL TOROID MOUNT

For KM or VTM options, the factory will assist in selecting the size and configuration that is best for your application. Call for applications engineering assistance – **Tecate Magnetics (619) 449-0911.**

PART NO.	LENGTH	WIDTH	THICK	DIA.	X	Y
VTM-2	1.00	.60	.51	1.20	.80	.40
VTM-3	1.10	.80	.71	1.60	.90	.60
VTM-4	1.40	.90	.81	2.54	1.20	.70
VTM-5	1.70	1.10	1.01	2.80	1.50	.90