

PRODUCT NUMBER

5 3 6 3 2 - X X X - X X X LF

PLATING

G=30μm[0.76μm]GOLD ON CONTACT AREA  
100μm[2.54μm]TIN/LEAD ON TAIL

LEAD FREE PLATING

G=30μm[0.76μm]GOLD ON CONTACT AREA  
100μm[2.54μm]PURE TIN ON TAIL

LEAD FREE OPTION NOTE 10,11

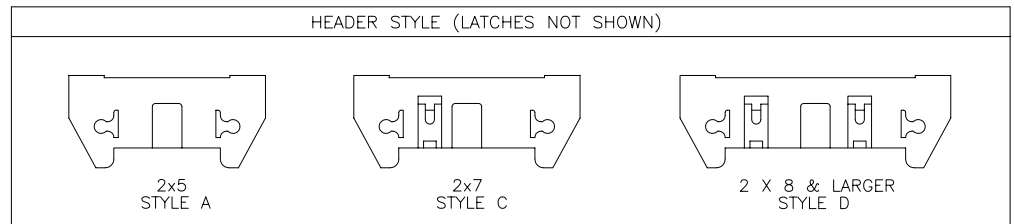
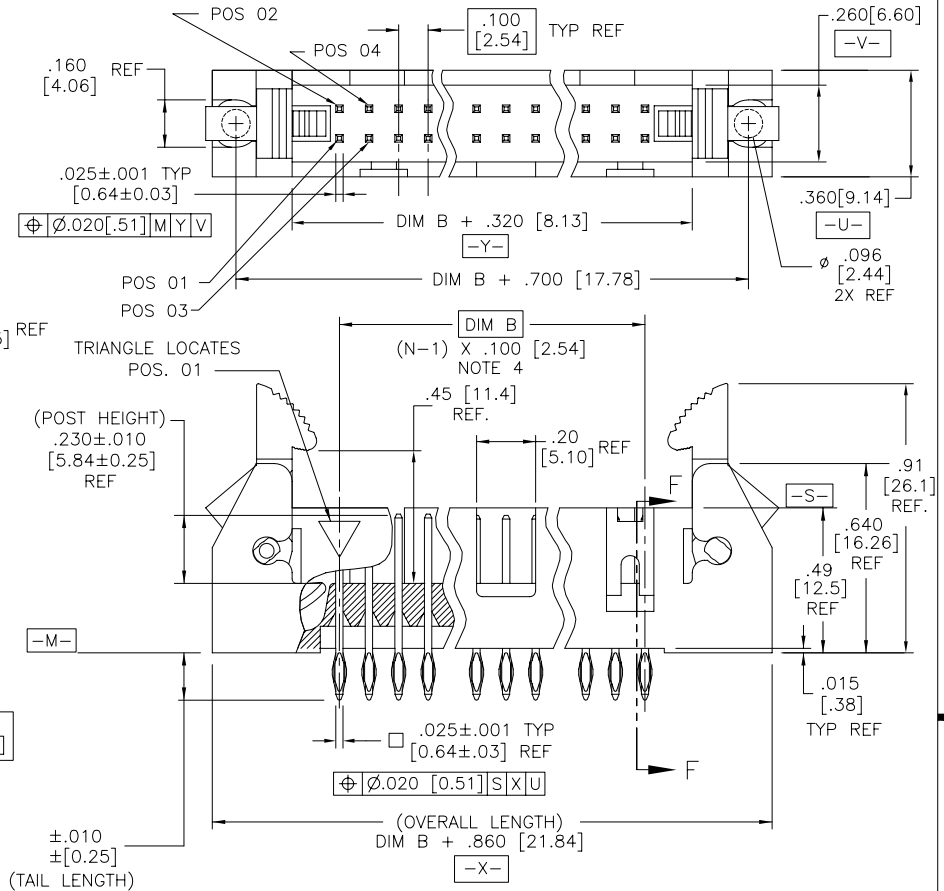
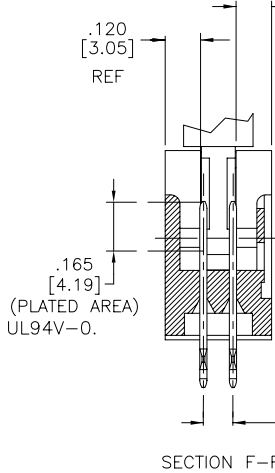
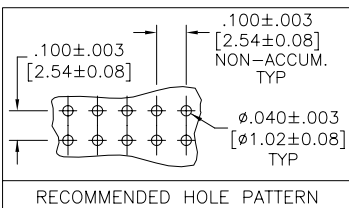
POLARIZATION NOTE 8

TAIL LENGTH  
2 = .120 [3.05]  
3 = .160 [4.06]  
6 = .610 [15.49]  
8 = .733 [18.62]

DASH NO.	POSITIONS	HEADER STYLE
10	2 X 5	A
14	2 X 7	C
16	2 X 8	D
20	2 X 10	D
26	2 X 13	D
34	2 X 17	D
40	2 X 20	D
50	2 X 25	D

NOTES:

- HOUSING MAT'L: HIGH TEMPERATURE THERMOPLASTIC. COLOR : BLACK
- PIN MATERIAL: PHOSPHOR-BRONZE
- 3 LBS/1.36 KG MIN. RETENTION.
- TO DETERMINE DIMENSIONS:  
N = NUMBER OF POSITIONS.  
EXAMPLE: 10 POS., (N-1) x .100[2.54]=.900[22.87]
- PACKAGED PER BUS-14-312 IN TRAYS.
- UNDERPLATING: 50μm/1.27μm Ni.
- FOR POLARIZATION, SPECIFY POSITION NUMBER (i.e.. 03= PIN 3) TO OMIT PIN. OMIT FROM PRODUCT NUMBER IF THIS FEATURE IS NOT APPLICABLE.
- RECOMMENDED PLATED-THRU-HOLE DIMENSIONS ARE:  
DRILLED HOLE: .0453/1.604±.0010/.025 DIA  
COPPER PLATING THICKNESS .001/.025 TO .003/.076  
SOLDER PLATING THICKNESS: .0003/.076 TO .0007/.0178  
OVERALL HOLE SIZE: .040/1.016±.003/.076 DIA
- RECOMMENDED MOUNTING SCREW - #2-56 FILLISTER HEAD MACHINE SCREW .25/6.35 LONG FOR .063/1.58 & .094/2.38 BOARDS, .313/7.93 LONG FOR .125/3.18 BOARDS.
- ADD "LF" SUFFIX AT THE END OF PART NUMBER FOR LEAD FREE OPTION
- THIS PRODUCT MEETS EUROPEAN UNION DIRECTIVES AND OTHER COUNTRY REGULATION AS DESCRIBED IN GS-22-008.
- THE PRODUCT IS NOT INTENDED TO BE EXPOSED TO A MANUFACTURING SOLDER PROCESS.



mat'l. code		tolerances unless otherwise specified		CUSTOMER COPY	 www.fciconnect.com
NOTE 1					
ltr	ecn no	dr	date	projection	title
A	V02362	AZ	09/27/00		
B	M05-0089	ERE	05/20/05	 INCH/MM	.100/2.54 cc EJECT LATCH SHROUDED VERTICAL P.F. HEADER
		linear	.xx ±.01[0.3]		
		angles	.xxx ±.005[0.13]	code	-
		dr	.xxx ±.002[0.051]	sheet	1 of 1
		enr	0° ±2°	scale	1:1
		chr	A. ZEREBILOV 09/27/00	size	dwg no
		appd	M. MOSTOLLER 09/27/00	A	53632
sheet index	revision sheet	B	1	cage code	22526