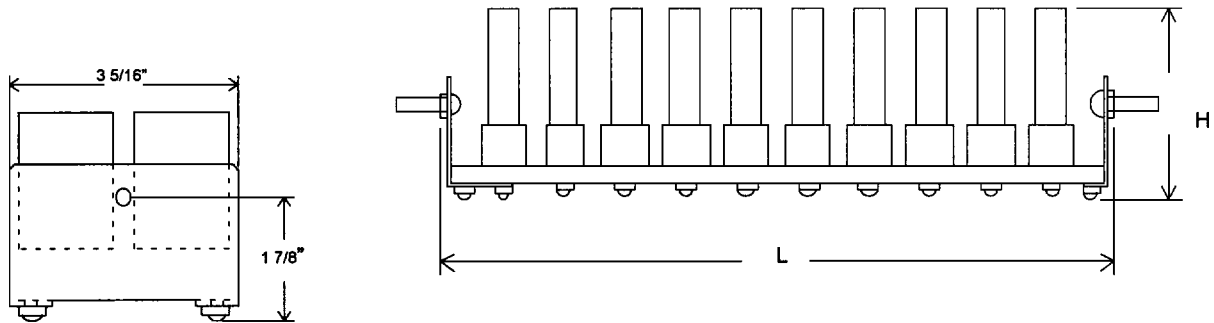
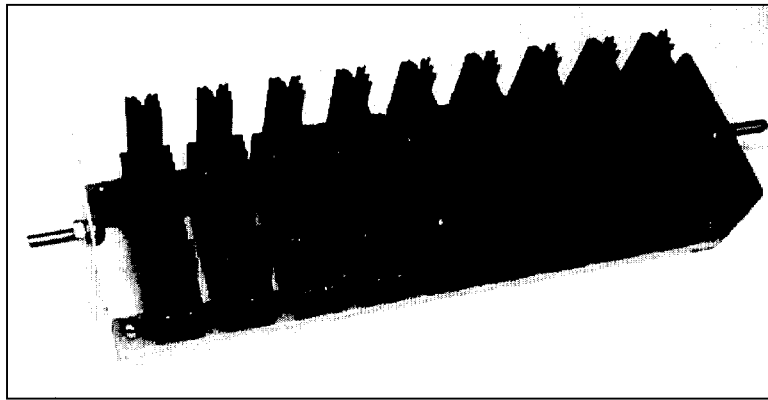


**SERIES  
HRFS8-**



**15 Amps  
100 ns Recovery  
14,400V – 45,600V**

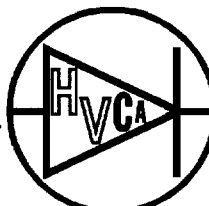


## Fast Recovery Power Rectifier Assembly Capacitor Compensated

HRFS8-							Height H=3.25" Max			
Average Forward Current Max @ 35°C Ambient					$I_{FAVM}$	8.0 Amps				
Average Forward Current Max @ 35°C (Forced Air 300ft/min)					$I_{FAVM}$	15.0 Amps				
Maximum Reverse Current @ $V_{RRM}$ @ 25°C					$I_R$	500 $\mu$ Amps				
Reverse Recovery Time @ $I_F=0.5A$ , $I_R=1.0A$ , $I_T=0.25A$					$T_{RR}$	100 nsec				
Operating and Storage Temperature					$T_A$	-55°C to 150°C				
Maximum Surge Current (Halfwave, 1 Phase, 60Hz)					$I_{FSM}$	500 Amps				
HRFSxx-	-12	-15	-18	-21	-24	-27	-30	-33	-36	
Length L (Inches)	8.15	10.4	11.5	12.62	14.85	16	18.2	20.45	22.7	
$V_{RRM}$ (kV)	14.4	19.2	21.6	24	28.8	31.2	36	40.8	45.6	
$V_F$ @ $I_F=15.0A$ @ 25°C	15.6	20.8	23.4	26	31.2	33.8	39	44.2	49.4	
<b>Higher Voltages, Higher Surge Currents, Fast Recovery, Custom Lengths, Doubler, Positive and Negative Taps Available, Please Consult the Factory.</b>										
Add an S for M6-35mm Studs instead of 1/4"-28-1" Studs Example HRFS8-18S is 8 Amps Average Forward Current, 21.6kV, L=11.5", with M6 Studs										

### HV Component

**Mail:** PO Box 2484, Farmingdale, NJ 07727  
**Fax:** (732) 938-4451  
<http://www.hvca.com>



### Associates, Inc.

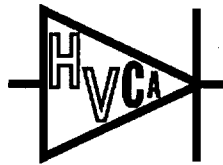
**Factory:** 1709 Route 34, Wall, NJ 07719  
**Telephone:** (732) 938-4499  
**Email:** [info@hvca.com](mailto:info@hvca.com)

HV Component Associates specializes in the design, development and manufacture of high voltage rectifiers and diodes, voltage multipliers, bridge rectifiers, standard, fast, and ultra fast rectifiers.

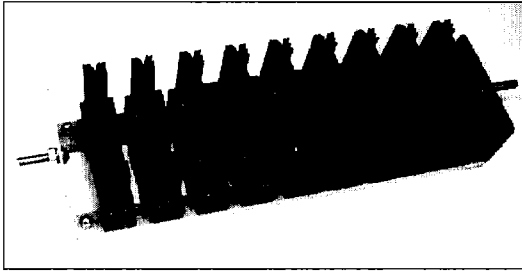
devices, and special assemblies for exacting custom applications. Our experience and our highly advanced technology provide the most economical quality rectifiers available today.



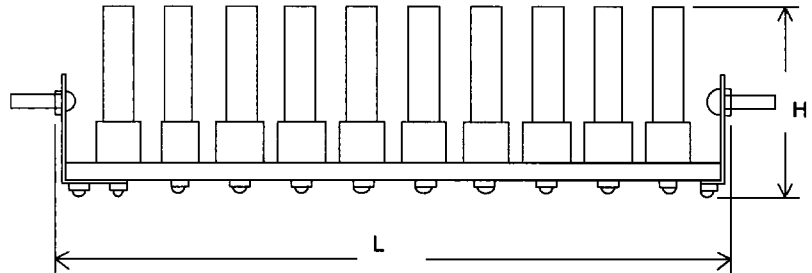
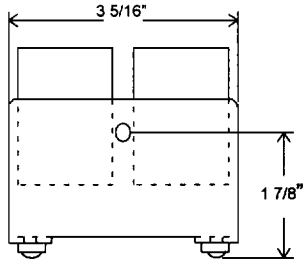
**SERIES**  
**HRS3.5-**  
**HRS5-**  
**HRS10-**



**3.5 to 25 Amps**  
**9,600V - 48,000V**  
**Standard Recovery**



**Complete Replacement For:**  
**Philips Amperex**  
**RS3.5, RS5, RS10**  
**OSB-, OSM-, OSS-, 9115, 9215, 9415**



## Power Rectifier Assembly Capacitor Compensated

HRS3.5-		Height H=3.25" Max							
Average Forward Current Max @ 50°C Ambient		I <sub>FAVM</sub>		3.5 Amps					
Average Forward Current Max @ 50°C (Forced Air 300ft/min)		I <sub>FAVM</sub>		5.0 Amps					
Maximum Surge Current, 10 ms Sine Pulse		I <sub>FSM</sub>		250 Amps					
HRS5-		Height H=3.25" Max							
Average Forward Current Max @ 50°C Ambient		I <sub>FAVM</sub>		5.0 Amps					
Average Forward Current Max @ 50°C (Forced Air 300ft/min)		I <sub>FAVM</sub>		15.0 Amps					
Maximum Surge Current, 10 ms Sine Pulse		I <sub>FSM</sub>		400 Amps					
HRS10-		Height H=3.75" Max							
Average Forward Current Max @ 50°C Ambient		I <sub>FAVM</sub>		10.0 Amps					
Average Forward Current Max @ 50°C (Forced Air 300ft/min)		I <sub>FAVM</sub>		25.0 Amps					
Maximum Surge Current, 10 ms Sine Pulse		I <sub>FSM</sub>		950 Amps					
HRSxx-	-6	-9	-12	-15	-18	-21	-24	-27	-30
Length L (Inches)	4.8	7	8.15	10.4	11.5	12.62	14.85	16	18.2
V <sub>RRM</sub> (kV)	9.6	16	19.2	25.6	28.8	32	38.4	41.6	48
V <sub>F</sub> @ I <sub>F</sub> =5.0A@25°C	6	10	12	16	18	20	24	26	30
Operating and Storage Temperature		T <sub>A</sub>		-55°C to 150°C					
Maximum Reverse Leakage Current @ V <sub>RRM</sub> @ T <sub>J</sub> =25°C		I <sub>RM</sub>		100 μAmps					
<b>Higher Voltages, Higher Surge Currents, Fast Recovery, Custom Lengths,            Doubler, Positive and Negative Taps Available, Please Consult the Factory.</b>									
Add an S for M6-35mm Studs instead of 1/4-28-1" Studs Example HRS5-18S is 5 Amps Average Forward Current, 28.8kV, L=11.5", with M6 Studs									

### HV Component

**Mail:** PO Box 2484, Farmingdale, NJ 07727  
**Fax:** (732) 938-4451  
<http://www.hvca.com>

HV Component Associates specializes in the design, development and manufacture of high voltage rectifiers and diodes, voltage multipliers, bridge rectifiers, standard, fast, and ultra fast rectifier



### Associates, Inc.

**Factory:** 1709 Route 34, Wall, NJ 07719  
**Telephone:** (732) 938-4499  
**Email:** [info@hvca.com](mailto:info@hvca.com)

devices, and special assemblies for exacting custom applications. Our experience and our highly advanced technology provide the most economical and highest quality rectifiers available today.