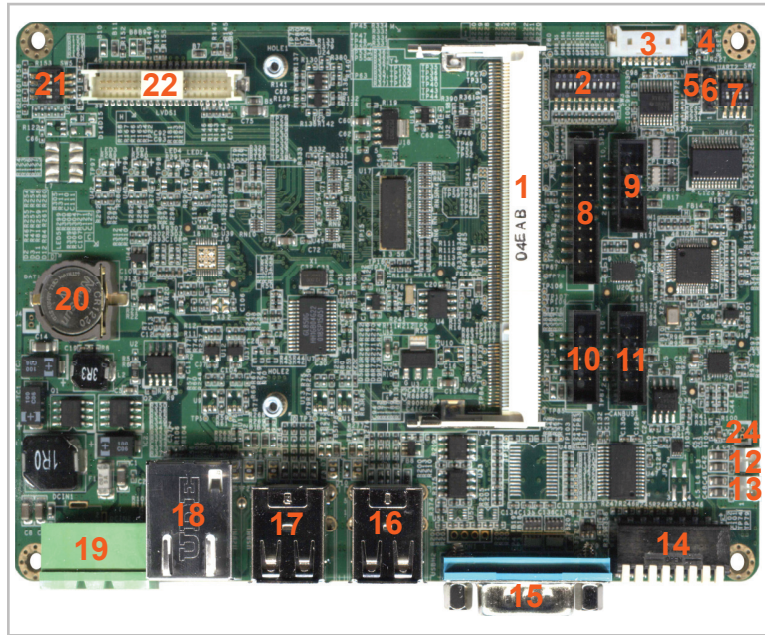


Thb-3517

Interface Base Board for TAM-3517 Series



Complete of the shelf solution for Human Machine Interface (HMI) applications.

LAN, CAN bus, RS-232, RS-422/485, SPI, I²C, GPIO to manage and monitor external devices.

24 bit LVDS connector to connect to LCD panels with or without touch screens.

System

System on module Compatible with TAM-3517 by a 200 pin SO-DIMM connector (1) backed up with coin battery (20)

RTC

Interfaces

Connectors LAN connector (18)
 4x standard USB host ports (16, 17)
 1x RS-232/422/485 (15)
 8x DIP switch (14)
 micro-SD card slot (bottom)

On-board connector LVDS connector (22)
 microphone (24)
 2W amplified speaker (12, 13)

Expansion header Touch interface (3) (order option)
 GPIO for Keypad (10) (order option)
 CAN bus (11)
 RS-232 (9)
 SPI, I²C, GPIO (8)
 UART (5, 6)

Power

Input power 12 VDC (Combicon MSTB 2.5) (19) (with locking screws)

Environmental and Mechanical

Temperature Commercial: 0° ~ 60°C
 Industrial: -40 ~ 85 °C

Humidity 10-90%

Dimensions 147 x 102 mm (5¾ x 4 inch)

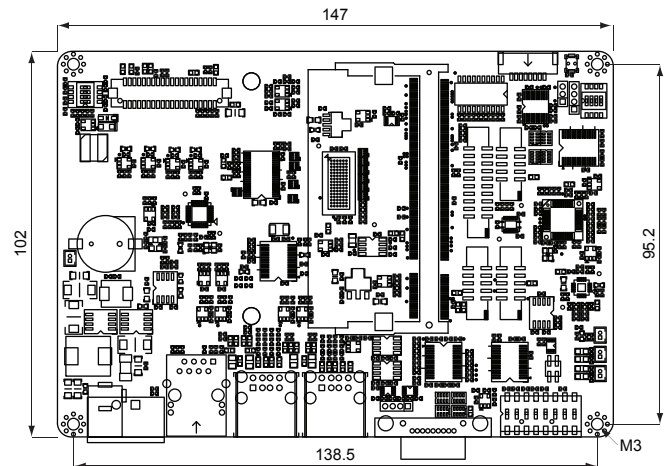
Weight 92 grams

Shock 50G / 25ms

Vibration 20G / 0-600 Hz

Dimensions

units in mm

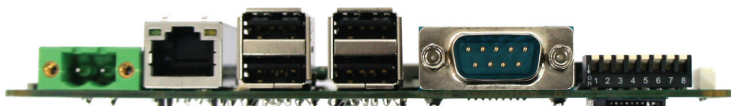


Order Information

THB-3517	HMI base board for TAM-3517
THB-3517-i	HMI base board for TAM-3517 with industrial temperature specifications (MOQ's apply)

Options

4-wire touch PCB	4-wire touch controller for Thb-3517
Keypad PCB	8 button GPIO Keypad

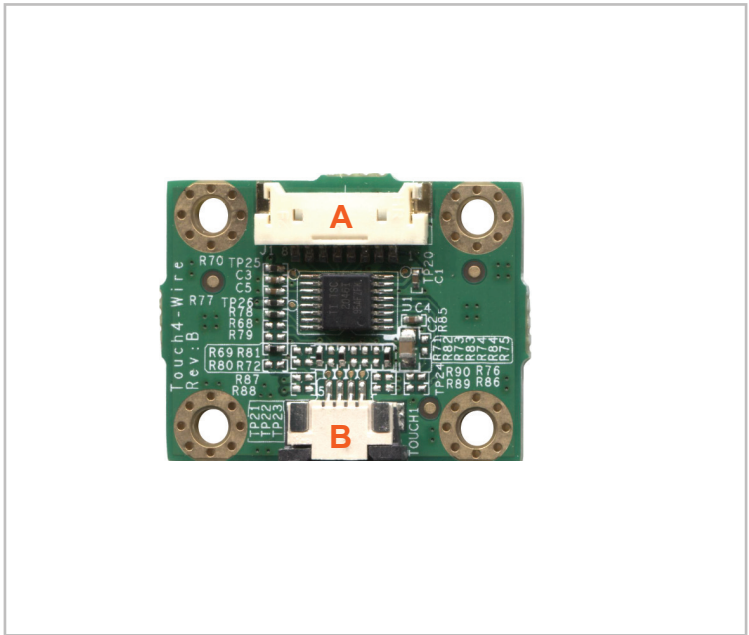
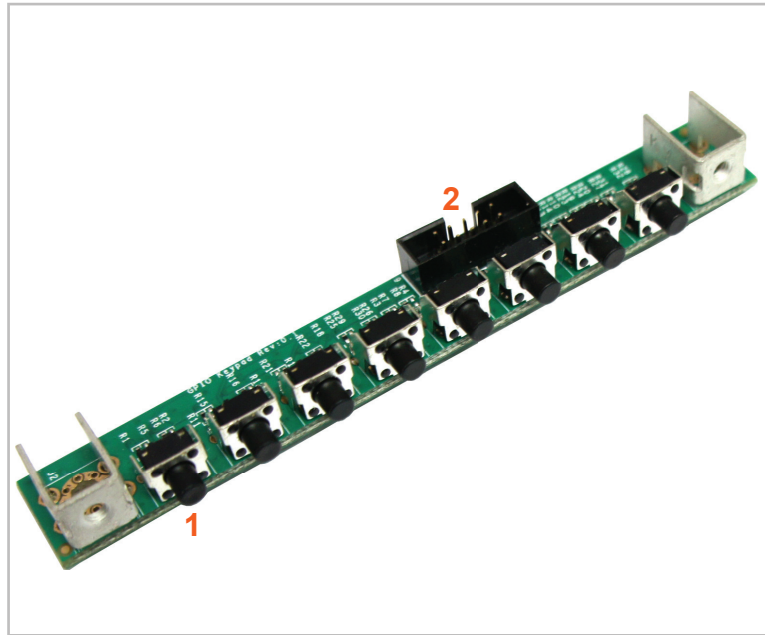


TechNexion



Phone: +886-2-8227-3585
 E-mail: sales@technexion.com
 Web: http://www.technexion.com





System

Keypad PCB Compatible with THB-3517 by a 10 pin dual row box header (2)

Interfaces

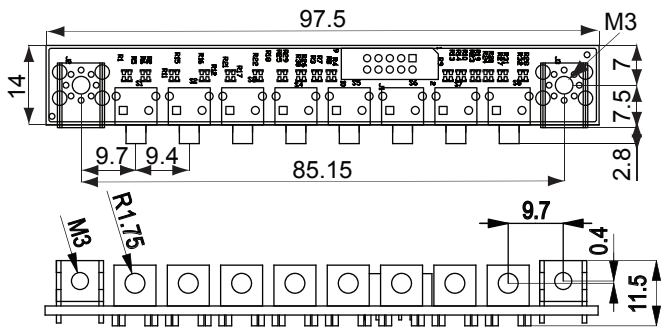
Buttons 8 tact switches (1)
Mounting 2 x M3 terminal
Expansion header 10 pin dual row 2.0mm box header(2)

Environmental and Mechanical

Temperature Commercial: -40° to 85° C
Humidity 10-90%
Dimensions 97.5 x 17.3 mm (3¾ x ⅝ inch)
Weight 10 grams
Shock 50G / 25ms
Vibration 20G / 0-600 Hz

Dimensions

units in mm



System

4-wire touch PCB Compatible with THB-3517 by a 8 pin connector (A)

Interfaces

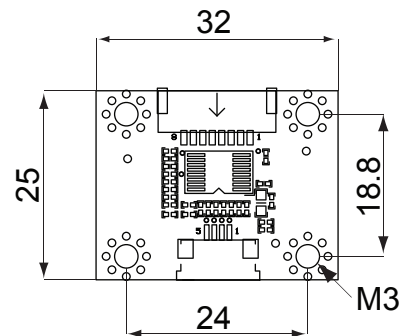
Connectors 4-wire FPC connector (B)
8 pin Molex PanelMate 1.25mm (A)

Environmental and Mechanical

Temperature Commercial: -40° to 85° C
Humidity 10-90%
Dimensions 32 x 25 mm (1¼ x 1 inch)
Weight 5 grams
Shock 50G / 25ms
Vibration 20G / 0-600 Hz

Dimensions

units in mm



TechNexion

Phone: +886-2-8227-3585
E-mail: sales@technexion.com
Web: http://www.technexion.com

