

# **SPECIFICATION**

## **SFD064VT4-INV**

Customer Approved

Customer \_\_\_\_\_

Date \_\_\_\_\_

By \_\_\_\_\_

Sunful's Confirmation

Approved By \_\_\_\_\_

Prepared By \_\_\_\_\_



Room A ,18/F,Haiying Building ,Fuhua Rd,  
Futian District, Shenzhen.

Tel: +86-755-82911760 82911758

Fax:+86-755-82915120

Date: 2005.1.10

## I、General Features:

This DC-AC inverter designed for PD064VT1/4/5 CCFL(Cold Cathode Fluorescent Tube) switching power supply. LCD panels should be PVI-2-Tube or other low profile application.

## II、Application、Storage Temperature And Humidity:

Application Temperature Range : -10~60<sup>0</sup>C

Application Humidity : 10%~90% RH, non-condensing

The inverter can be used at least for 80000 hours within the temperature specified above

Storage Temperature Range : -20~70<sup>0</sup>C

Storage Humidity : 10%~90%RH,non-condensing

## III、Electrical Requirements

### 1.Input Characteristics:

Item	Symbo l	Conditions	Min	Type	Max	Unit
Input Voltage	V <sub>IN</sub>	V <sub>IN</sub> =DC12±10%	10.80	12.00	13.20	V
Input Current	I <sub>IN</sub>	V <sub>IN</sub> =12V V <sub>ON</sub> =5V	0.5	0.6	0.7	A
Control Voltage	V <sub>CON</sub>	ON=5V OFF=0V	0	L/H	5	V
Input Power	P <sub>IN</sub>	V <sub>IN</sub> =12V V <sub>CON</sub> =5V	-	7.2	-	W

## 2. Output Characteristics:

Item	Symbol	Conditions	Min	Type	Max	Unit	Remark
Output Current	$I_{OUT}$	$V_{CC}=12V$ $V_{CON}=5V$	11.50	12.00	12.50	mA	Single side
Output Voltage	$V_{OUT}$	$V_{CC}=12V$ $V_{CON}=5V$	330	380	450	V	
Working Frequency	$F_L$	$V_{CC}=12V$ $V_{CON}=5V$	30	35	40	KHz	
Output Open Voltage	$V_{OL}$	$V_{CC}=12V$ $V_{CON}=5V$	900	-	-	V	

## IV、Connector Socket

### 1. CN1: Input Connector (JST S4B-XH-A or compatibility)

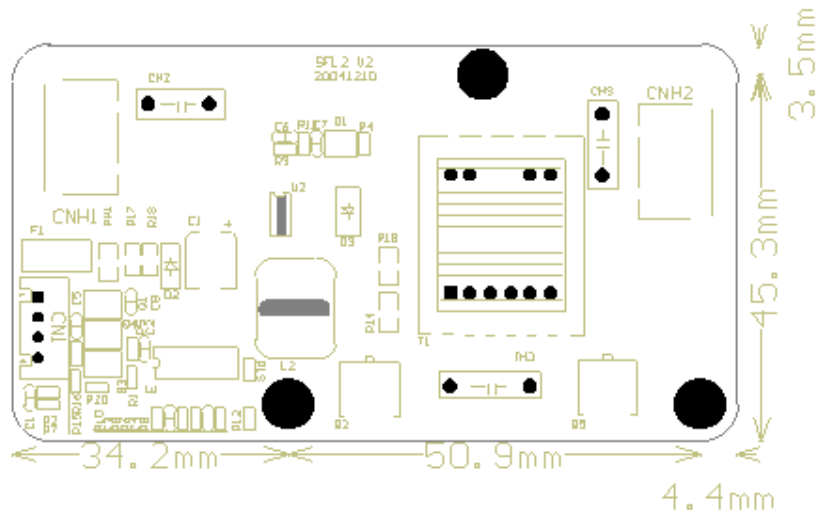
Pin No	Symbol	Description
1	$V_{IN}$	DC +12V
2	GND	Ground
3	$V_{CON}$	ON/OFF control    ON=+5V    OFF=0V
4	$V_{BRT}$	Brightness control $V_{BRT} = 0V \sim +5V(\text{dark})$

### 2. CNH1\CNH2: Output connector adapter to JST BHR-03VS-1

Pin No	Symbol	Description
1	Output	Lamp Low Voltage
2	Output	Lamp High Voltage    330~450V

**Notes : Safety clearance shall be more than 2mm/KV.**

**V、 Driver board outline drawing:**



OutLine:89.5\*48.8\*13.1mm  
 Toplayer High (Max):9.5mm  
 Board Thickness: 1.6mm  
 BottomPlayerHigh (Max): 2.0mm  
 Screw: D3.0mm

## VI、 Sample Test Report

**PRODUCT: SFL2**

Test Device :		PXN-1503A		TEXTRONIX 2245A					
Test condention:		Vin=12V		Vcon=5V		Vbrt=NC		R <sub>Load</sub> =102K Ω	
Item Times	I <sub>IN</sub> A	I <sub>OUT1</sub> mA	I <sub>OUT2</sub> mA	V <sub>OUT1</sub> V	V <sub>OUT2</sub> V	F <sub>L1</sub> KHz	F <sub>L2</sub> KHz	Open VOL1 KV	Open VOL2 KV
1	0.31	3.1	3.3	378	387	36.62	35.11	898	900
2	0.32	3.2	3.2	393	389	36.78	35.24	897	899