

SPECIFICATIONS

S-ATA Connector

Mechanical

Insertion Force: 40N max. for external S-ATA, 39.2N max. for 1394
Withdrawal Force: 10N min. for external S-ATA, 9.8N min. for 1394
Durability: 2500 Cycles for external S-ATA and 1500 Cycles for 1394.

LD Series

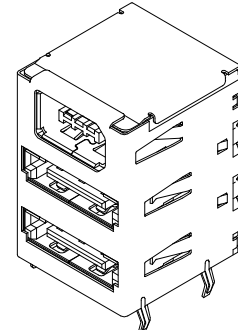
R/A, T/H Type, Plug
1.27mm [.050"] Pitch
20 Pos.

Electrical

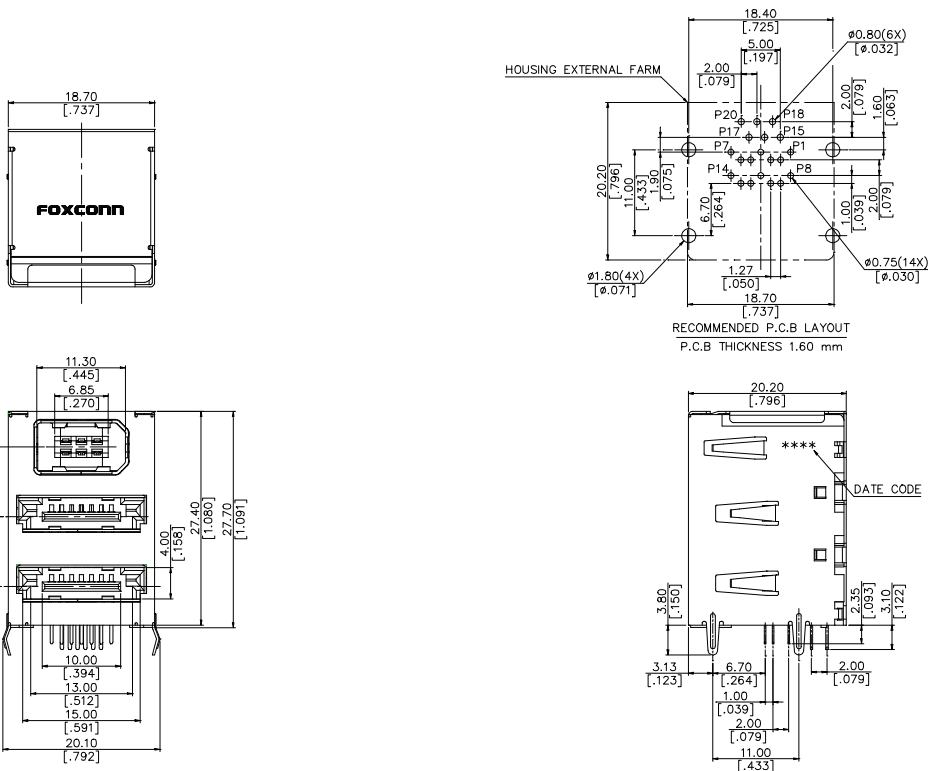
Voltage Rating: 250V.
Current Rating: 1.5A min. per pin
Contact Resistance: 30 mΩ max. Δ15 mΩ max. after stress
Dielectric Withstanding Voltage: 500V AC.
Insulation Resistance: 1000MΩ min. for external S-ATA and 100MΩ min. for 1394

Physical

Housing: Thermoplastic, UL 94V-0 rated in Red Color.
Contact: Copper alloy
Plating: See "ORDERING INFORMATION"
Operating Temperature: -55°C to +105°C



DRAWING



ORDERING INFORMATION

PRODUCT NO. : LD 8 7 20 * - S 6 1 R

