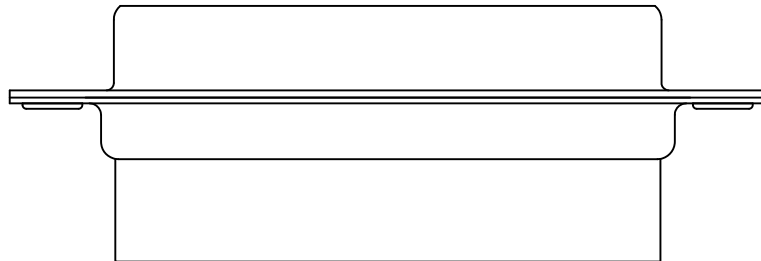
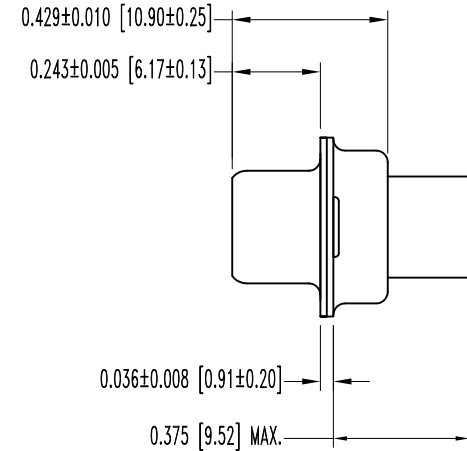
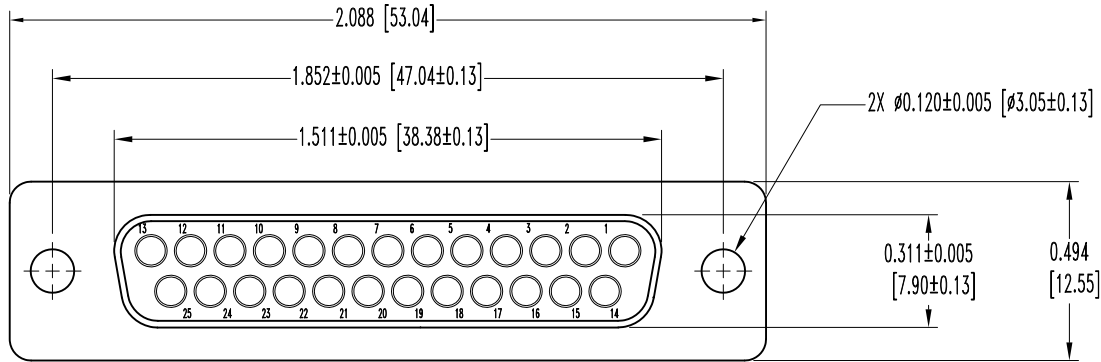


SK11908

THIS DRAWING CONTAINS INFORMATION PROPRIETARY TO POSITRONIC AND ITS SUBSIDIARIES. POSITRONIC BELIEVES THE DATA ON THIS DRAWING TO BE RELIABLE, SINCE THE TECHNICAL INFORMATION IS GIVEN FREE OF CHARGE, THE USER EMPLOYS SUCH INFORMATION AT HIS OWN DISCRETION AND RISK. POSITRONIC ASSUMES NO RESPONSIBILITY FOR RESULTS OBTAINED OR DAMAGES INCURRED FROM USE OF SUCH INFORMATION IN WHOLE OR IN PART.

DATE	REV	REVISION RECORD	APP	DR	CK
11-08-10	NC	ECO 33264	TK	BS	TK



NOTES:

- MATERIALS AND FINISHES:  
INSULATOR: GLASS FILLED DAP PER ASTM-D-5948, TYPE SDG-F, UL 94V-0, E-595, NASA-RP-1124, COLOR: GREEN.  
SHELLS: BRASS, 0.000050 [1.27µ] GOLD OVER COPPER PLATE.
- DETAILED PRODUCT, MECHANICAL, AND ELECTRICAL INFORMATION IS AVAILABLE IN THE LATEST SPACE-D PRODUCT PUBLICATION. VISIT [CONNECTPOSITRONIC.COM/PRODUCTS/62/HIGHPERFORMANCED-SUBMINIATURE](http://CONNECTPOSITRONIC.COM/PRODUCTS/62/HIGHPERFORMANCED-SUBMINIATURE) OR [CONNECTPOSITRONIC.COM](http://CONNECTPOSITRONIC.COM).
- DIMENSIONS ARE IN INCHES [MILLIMETERS].

	<b>POSITRONIC INDUSTRIES INC.</b> <a href="http://www.connectpositronic.com">www.connectpositronic.com</a>		FSCM 28198
		SCALE <b>N.T.S.</b>	DRAWN BY <b>B. SHELEDY</b>
DECIMAL TOL. <b>± 0.015 [0.38]</b>	TITLE <b>SND25S0000G</b>	APPROVED BY <b>T. KEPLEY</b>	
ANGULAR TOL. <b>± 5°</b>	DATE <b>11-08-10</b>	DRAWING NUMBER <b>SK11908</b>	REV. <b>NC</b>