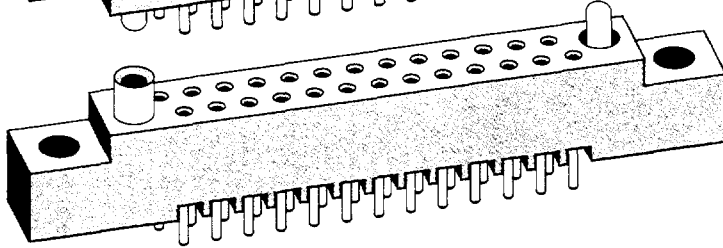
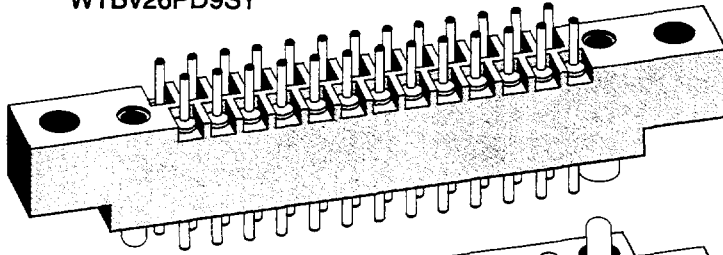


WTBV26PD9SY



WTB26SAD9SY

**2 • ROW  
Connectors**  
Sandwich –  
Boards

**WTBV-WTB**

EXAMPLES:

PLUG:	WTBV	26	PD9	SY
RECEPTACLE:	WTB	26	SAD9	SY

**PLUG**

**RECEPTACLE**

**SERIES**

WTBV = 2-row, straight, plug, mntg. ears. | WTB = 2-row, straight, receptacle, mntg. ears.

**NUMBER OF CONTACTS**

10,14,20,24,26,30,36,40,44,50,54,56,60,66,70 | 10,14,20,24,26,30,36,40,44,50,54,56,60,66,70

**TYPE OF CONTACTS**

PC = Pin, straight, solder cup	SAC = Socket, straight, solder cup, closed entry
PD9 = Pin, straight, dip solder, .140	SAD9 = Socket, straight, dip solder, .140
PD11 = Pin, straight, dip solder, .172	SAD11 = Socket, straight, dip solder, .172
PF3 = Pin, straight, flex-circuit, .050	SAD15 = Socket, straight, dip solder, .234
PF6 = Pin, straight, flex-circuit, .093	SAF3 = Socket, straight, flex-circuit, .050
PW40 = Pin, straight, Wire Wrap, .625	SAF6 = Socket, straight, flex-circuit, .093
	SAW40 = Socket, straight, Wire Wrap, .625

**WARNING: When interchanging contacts, position of male and female hardware is automatically reversed.**

SAC = Socket, straight, solder cup, closed entry	PC = Pin, straight, solder cup
SAD9 = Socket, straight, dip solder, .140	PD9 = Pin, straight, dip solder, .140
SAD11 = Socket, straight, dip solder, .172	PD11 = Pin, straight, dip solder, .172
SAD15 = Socket, straight, dip solder, .234	PF3 = Pin, straight, flex-circuit, .050
SAF3 = Socket, straight, flex-circuit, .050	PF6 = Pin, straight, flex-circuit, .093
SAF6 = Socket, straight, flex-circuit, .093	PW40 = Pin, straight, Wire Wrap, .625
SAW40 = Socket, straight, Wire Wrap, .625	

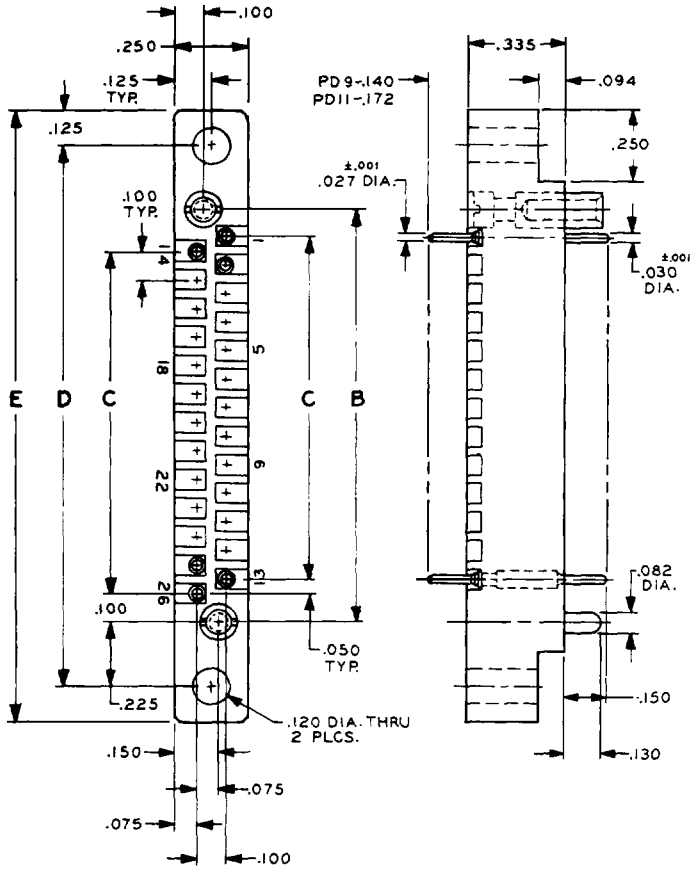
**TYPE OF HARDWARE**

SY = Guide set | SY = Guide set

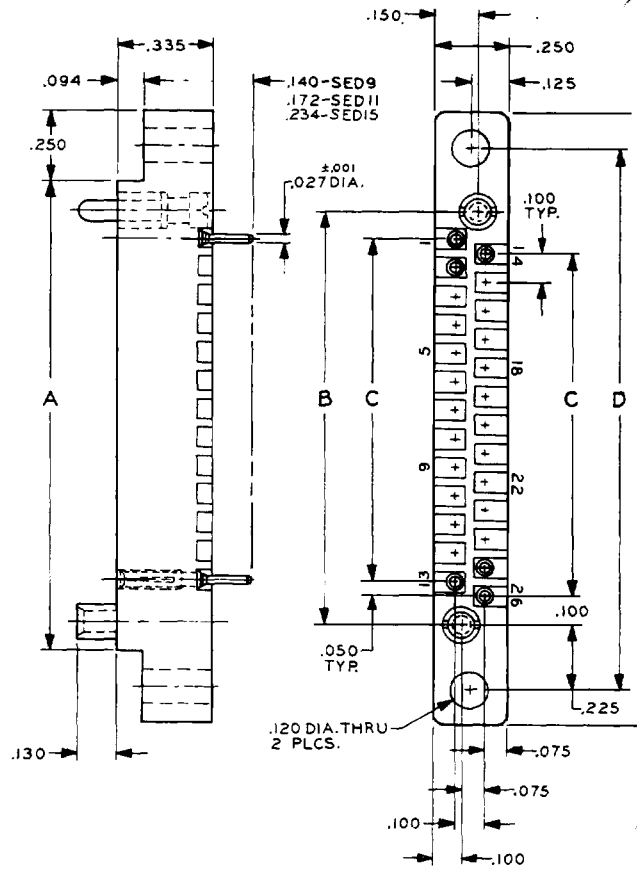
**NOTES**

- For polarized "D"-shaped guides, add dash and code number to part number (Example: -7). See "Polarization" under next tab for codes.
- Face seal gaskets: order separately. See "Gaskets" under next tab for instructions.

2-9:



PLUG IMAGE  
EXAMPLE: WTBV26PD9SY



RECEPTACLE IMAGE  
EXAMPLE: WTB26SAD9SY

## WTBV-WTB DIMENSIONS

SIZE	A	B	C	D	E
10	.850	.650	.400	1.100	1.350
14	1.050	.850	.600	1.300	1.550
20	1.350	1.150	.900	1.600	1.850
24	1.550	1.350	1.100	1.800	2.050
26	1.650	1.450	1.200	1.900	2.150
30	1.850	1.650	1.400	2.100	2.350
36	2.150	1.950	1.700	2.400	2.650
40	2.350	2.150	1.900	2.600	2.850
44	2.550	2.350	2.100	2.800	3.050
50	2.850	2.650	2.400	3.100	3.350
54	3.050	2.850	2.600	3.300	3.550
56	3.150	2.950	2.700	3.400	3.650
60	3.350	3.150	2.900	3.600	3.850
66	3.650	3.450	3.200	3.900	4.150
70	3.850	3.650	3.400	4.100	4.350

2-92