

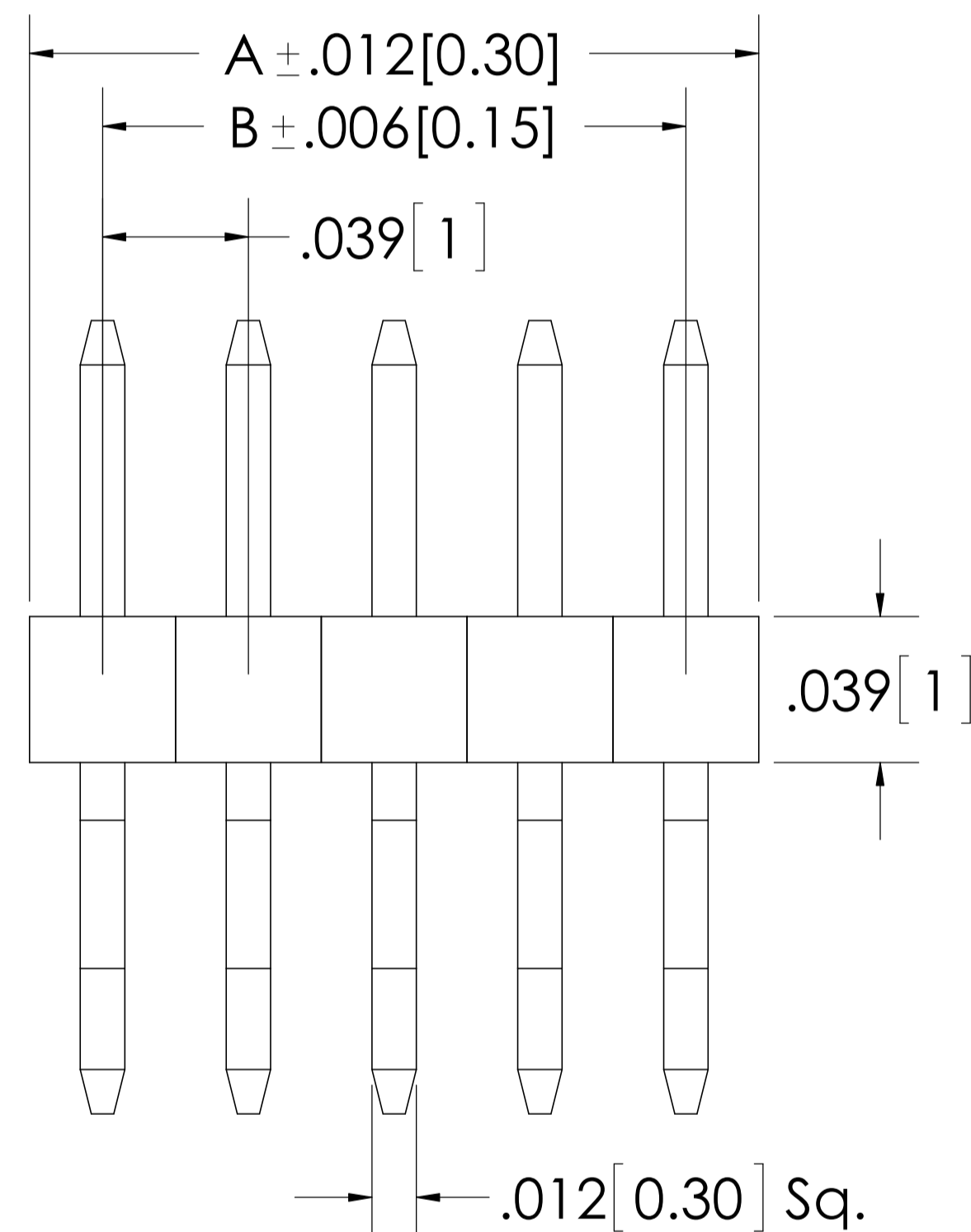
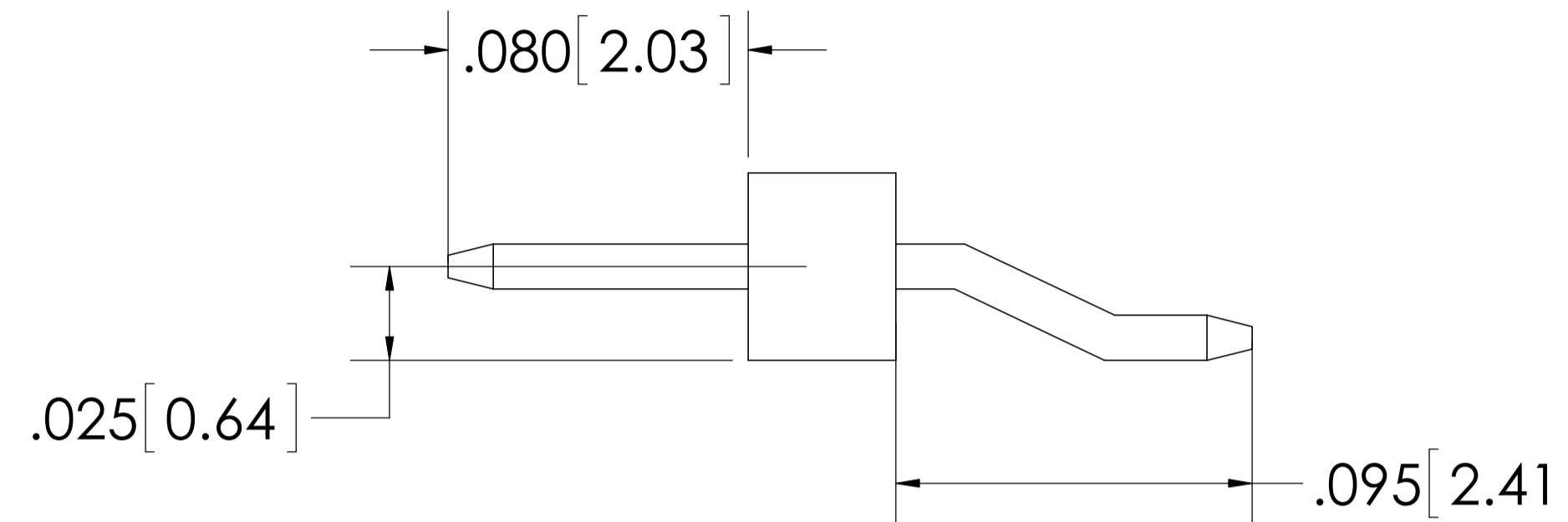
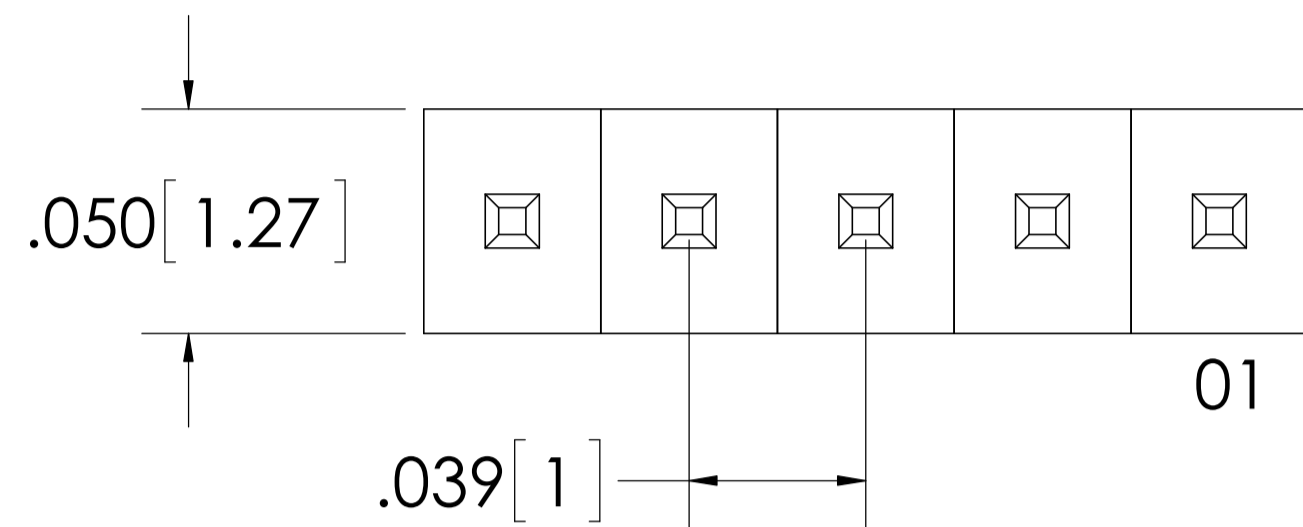
REVISIONS			
REV.	DESCRIPTION	DATE	APPROVED
A	Created Drawing	02/06/13	DC

Specifications:
 Current Rating: 1.0 Ampere
 Insulation Resistance: 1000M Ohms Min.
 Dielectric Withstanding: 300V AC
 Contact Resistance: 20m Ohms Max.
 Operating Temperature: -40°C to +105°C

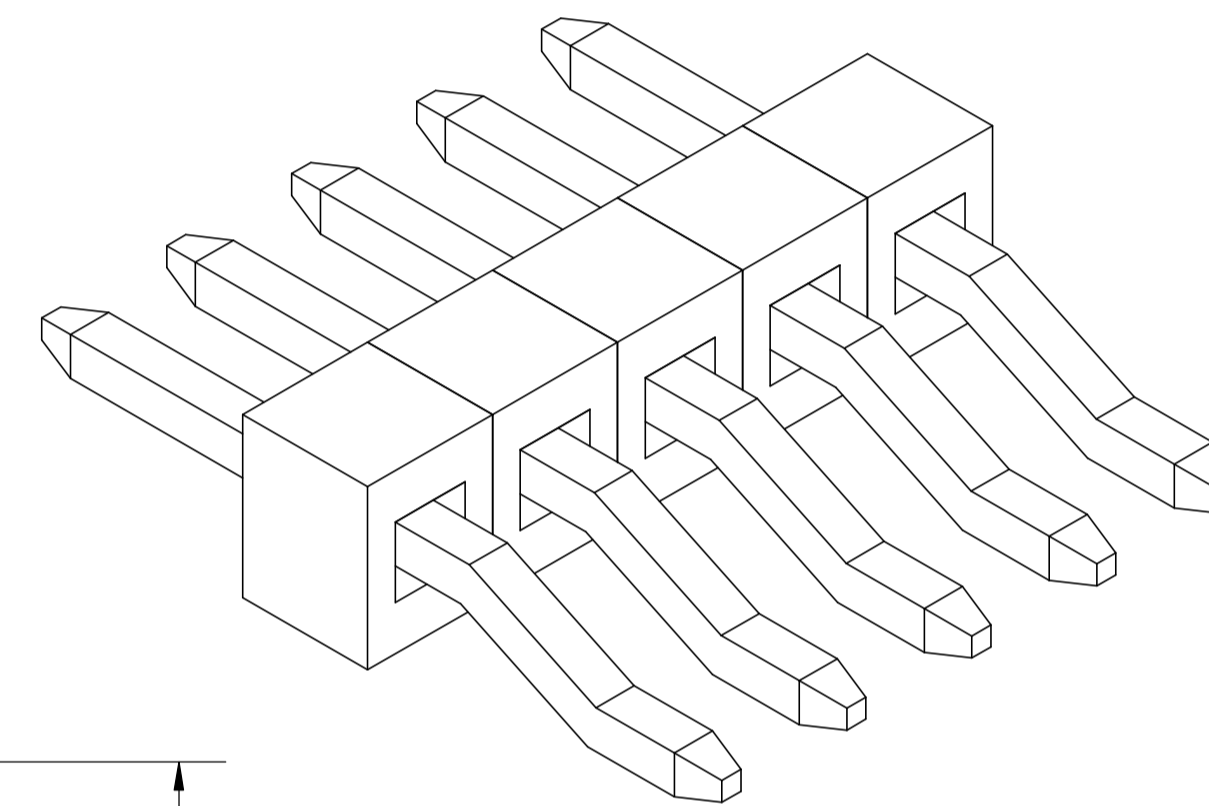
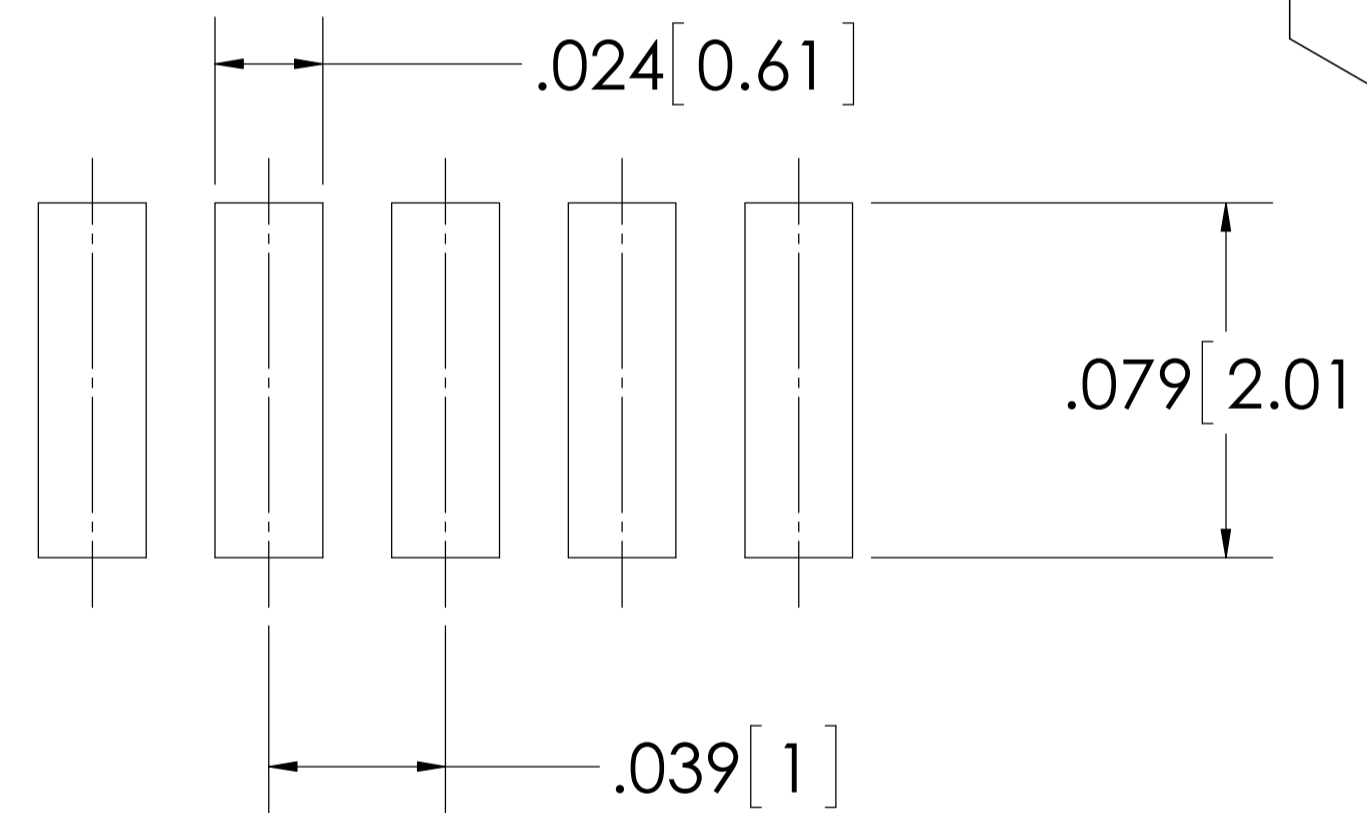
Materials:
 Contact Material: Brass
 Plating: Gold Flash over entire pin
 Insulator Material: Thermoplastic, UL94V-0, LCP
 Color: Natural

Max. Process Temperatures:
 Peak: 260°C up to 20 secs.
 Process: 230°C up to 60 secs.
 Wave: 260°C up to 6 Secs.
 Manual Solder: 350°C up to 5 secs.

All materials must meet Major League Electronics requirements for environmental protection.



RECOMMENDED PCB LAYOUT
 General Tolerance .002 [0.050]



CONTACTS	DIMENSIONS			
	A		B	
02	0.079	2.00	0.039	1.00
03	0.118	3.00	0.079	2.00
04	0.157	4.00	0.118	3.00
05	0.197	5.00	0.157	4.00
06	0.236	6.00	0.197	5.00
	Inches	MM	Inches	MM

BLTSM-7 XX - S - F - H - XX - P - LF
 Number of Pins Per Row: 02,03,04,05,06
 Single Row
 Contact Plating: F - Gold Flash Over All
 Horizontal Surface Mount
 Lead Free
 Pick and Place Cap
 Packaging: TR = Tape and Reel, TB = Tube

UNLESS OTHERWISE SPECIFIED:		DATE	NAME
DIMENSIONS ARE IN INCHES TOLERANCES: ONE PLACE DECIMALS ±.100 TWO PLACE DECIMAL ±.010 THREE PLACE DECIMAL ±.005 FOUR PLACE DECIMAL ±.002		02/06/13	GWE
INTERPRET GEOMETRIC TOLERANCING PER:		02/06/13	DRC
MATERIAL	--		
FINISH	--		
Q.A.			
COMMENTS:			

Major League Electronics
 4235 Earnings Way
 New Albany, IN 47150
 Phone: 812-944-7244 Fax: 812-944-7268
 e-Mail: mle@mlelectronics.com

TITLE: BLTSM-7-SH
 SIZE B DWG. NO. Q:ASSEM/BL/BLTSM-7-SH REV A
 SCALE: 12:1 WEIGHT: SHEET 1 OF 1

PROPRIETARY AND CONFIDENTIAL
 THE INFORMATION CONTAINED IN THIS DRAWING IS THE SOLE PROPERTY OF MAJOR LEAGUE ELECTRONICS. ANY REPRODUCTION IN PART OR AS A WHOLE WITHOUT THE WRITTEN PERMISSION OF MAJOR LEAGUE ELECTRONICS IS PROHIBITED.