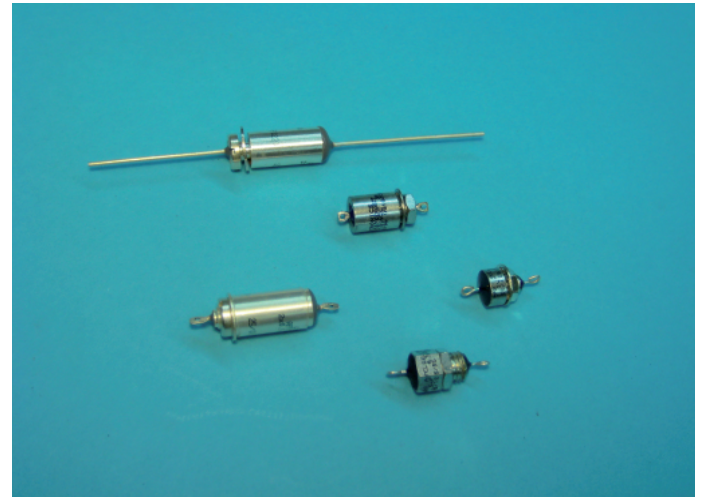


## CL configuration, ceramic dielectric

Feed through filter range using discoidal ceramics for the capacitive element - type 2R1. This robust multilayer structure provides solutions to RFI problems from 30kHz to 1 GHz. The units are housed in robust, sealed metal containers of thread construction, and offer a range of terminal finishes. Specifically designed for military, industrial, telecoms and medical applications.

- Capacitive value - 1.2 $\mu$ F 80Vdc rated
- Wide choice of performance options
- Excellent temperature stability
- Hermetic construction



## Mechanical Specifications

Manufacture: sealed threaded construction.

Connections: wire or tag terminations.

Mounting: thread 1/4 inch-28 UNF 2A.

## Case Variants

Style	Seal	L1 max	L2 max	L3 max TAG	L4 max TAG	(std)		L4 max TAG	(long thread)		D2
						PIN	PIN		PIN	PIN	
1	resin	4.6	4.85	8.25	17	8.9	17.2				1
2	resin	4.6	7.95	8.25	17	-	-	12		29.3	1
3	hermetic	4.6	4.85	8.5	17	8.9	17.2	-		-	1.5
4	hermetic	4.6	7.95	8.5	17	-	-	12		29.3	1.5
5	hermetic	14.7	4.85	18.8	27	8.9	17.2	-		-	1.5
6	hermetic	14.7	7.95	18.8	27	-	-	12		29.3	1.5

## Filter Range - AKCL

(example pt no. - AKCL100412RKT1S)

Code	Max values		Typical Insertion loss (dB)							CCT
	I <sub>dc</sub> • (A)	R <sub>dc</sub> ( $\Omega$ )	30 kHz	150 kHz	300 kHz	1 MHz	10 MHz	1 GHz		
100 412RK-1-	15	0.008	15	28	34	44	60	70	1	
100 412RK-3-	15	0.008	15	28	34	44	60	70	1	
100 412RA-5-	0.06	70	44	70	70	70	70	70	1	
101 412RA-5-	0.06	70	44	70	70	70	70	70	2	
100 412RB-5-	0.15	12	24	52	64	70	70	70	1	
101 412RB-5-	0.15	12	24	52	64	70	70	70	2	
100 412RC-5-	0.25	4	18	42	56	70	70	70	1	
101 412RC-5-	0.25	5	18	42	56	70	70	70	2	
100 412RD-5-	0.30	2.3	16	35	44	62	70	70	1	
101 412RD-5-	0.30	2.3	16	35	44	62	70	70	2	
100 412RE-5-	0.45	1.2	15	31	37	55	70	70	1	
101 412RE-5-	0.45	1.2	15	31	37	55	70	70	2	
100 412RJ-5-	10	0.01	15	28	33	44	64	70	1	
101 412RJ-5-	10	0.01	15	28	33	44	64	70	2	

Case finish: T = Tin plated  
S = Silver plated  
G = Gold plated

Case style available: 2 instead of 1; 4 instead of 3; 6 instead of 5

Termination: W = Wire  
T = Tag  
P = Headed wire

• I<sub>c,dc</sub> (category current) equals 0.6 I<sub>r</sub> (rated current) with linear derating from 105° to +125°C

\* other variants on request

## Electrical Specifications

Rated voltage (V<sub>R</sub>): 80Vdc

Category voltage (V<sub>C</sub>): 50Vdc

Rated current (I<sub>R</sub>): referred to room temperature = 40°C

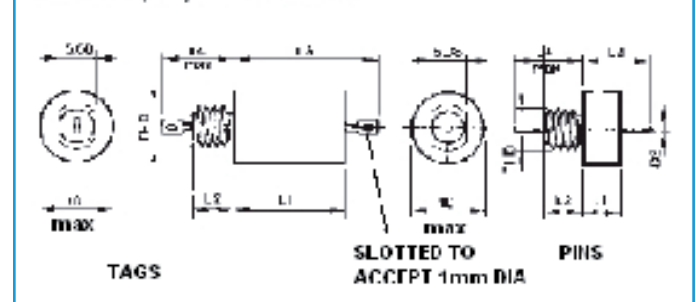
Voltage test (2 s.): 2.5 V<sub>R</sub> dc

Climatic category: (55/125/56);

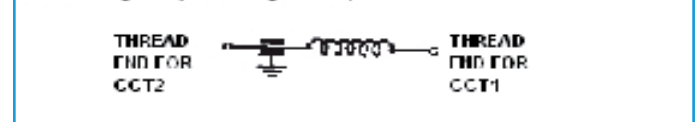
Temperature range: -55°C to +125°C

Capacitance value: 1.2 $\mu$ F

## Dimensions (mm) and connections



## Circuit diagram (CL configuration)



## OTHER PRODUCT RANGES AVAILABLE:

Ceramic feed through filters (CL, Pi, 1T, CC, 2P, 2T configurations)

AK 100-101 series in accordance with BS9121 F0009

AK 100-171 series in accordance with BS9121 F0011

Please, contact DECTRON Sweden for more detailed information.