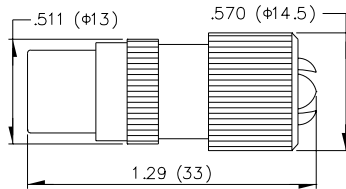




PAL Series

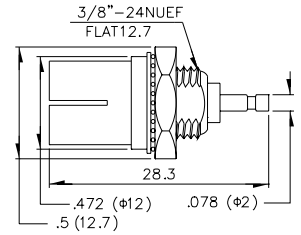
MP05

PAL MALE (METAL TV PLUG)



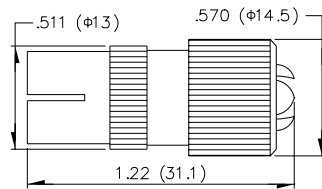
MP08

PAL FEMALE BULKHEAD



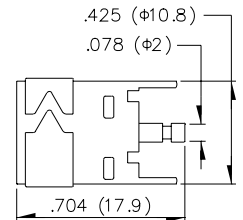
MP06

PAL FEMALE (METAL TV JACK)



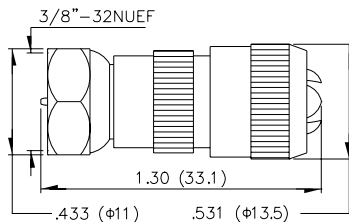
MP10

PAL PC BOARD MOUNT



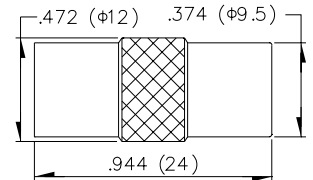
MP06FM

F MALE LOCK COMMON TYPE



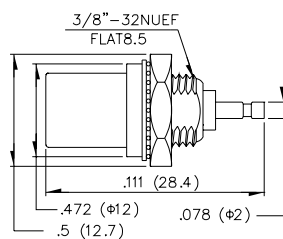
MP13

PAL MALE TO MALE



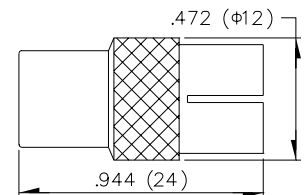
MP07

PAL MALE BULKHEAD



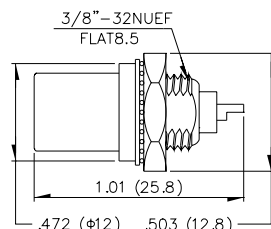
MP14

PAL MALE TO FEMALE (METAL)



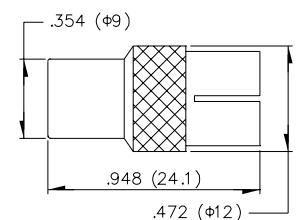
MP07L

PAL MALE BULKHEAD



MP141

PAL 9.0 MALE TO 9.5 FEMALE



North and South America:

Methode Electronics, Inc. Connector Products

1700 Hicks Road • Rolling Meadows, IL 60008 USA

847-392-3500 • Toll Free: 800-323-6864 • Fax: 847-392-9404

439 Email: info@methode.com • Web: www.methode.com/connector/index.html

Europe:

Methode Electronics Ireland, Ltd.

11 Annacotty Business Park • Limerick, Ireland

353 61 330013 • Fax: 353 61 330803

Email: info@methode.ie • Web: ireland.methode.com/main.html

Far East:

Methode Electronics Far East, Pte. Ltd.

1 Tuas Lane, Jurong Town • Singapore 638610

65-68615444 • Fax: 65-68614777

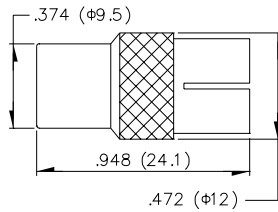
Email: sales@methode.com.sg • Web: www.methode.com/mefe/index.html



PAL Series

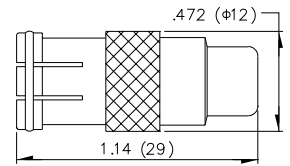
MP142

PAL 9.5 MALE TO 9.0 FEMALE



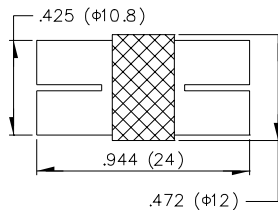
MP18

PAL PUSH ON FEMALE TO RCA FEMALE



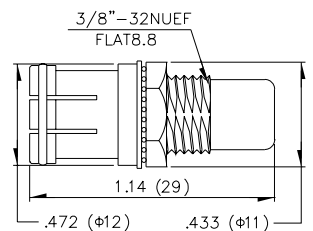
MP143

PAL FEMALE TO F PUSH ON MALE



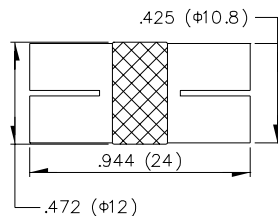
MP20

PAL PUSH ON FEMALE TO RCA FEMALE BULKHEAD



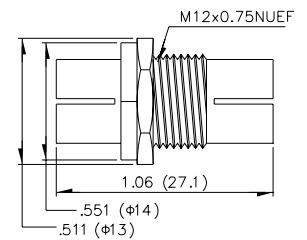
MP15

PAL FEMALE TO FEMALE (METAL)



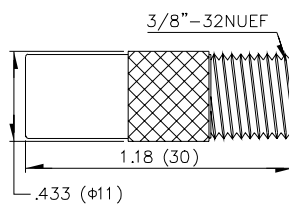
MP21

PAL DOUBLE FEMALE (BULKHEAD)



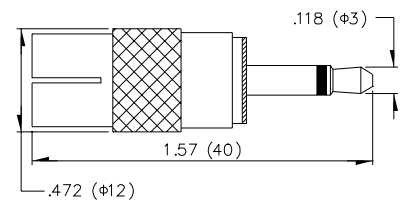
MP16

PAL MALE TO F FEMALE



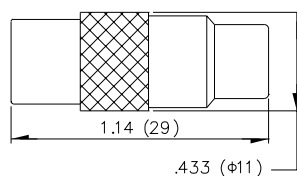
MP22

PAL FEMALE TO 3.5 MO MALE



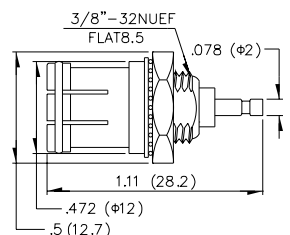
MP17

PAL MALE TO RCA FEMALE



MP23

PAL PUSH ON FEMALE BULKHEAD



North and South America:

Methode Electronics, Inc. Connector Products

1700 Hicks Road • Rolling Meadows, IL 60008 USA

847-392-3500 • Toll Free: 800-323-6864 • Fax: 847-392-9404

Email: info@methode.com • Web: www.methode.com/connector/index.html

Europe:

Methode Electronics Ireland, Ltd.

11 Annacotty Business Park • Limerick, Ireland

353 61 330013 • Fax: 353 61 330803

Email: info@methode.ie • Web: ireland.methode.com/main.html

Far East:

Methode Electronics Far East, Pte. Ltd.

1 Tuas Lane, Jurong Town • Singapore 638610

65-68615444 • Fax: 65-68614777

Email: sales@methode.com.sg • Web: www.methode.com/mefe/index.html



RF/Microwave/Coax Connectors



F SERIES



TNC SERIES



N SERIES



MINI-UHF SERIES



UHF SERIES



SMA SERIES



RCA SERIES



SMB SERIES



PAL SERIES



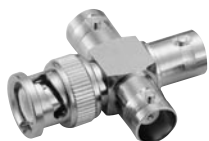
MCX SERIES



FME SERIES



MMCX SERIES



BNC SERIES

PART NUMBER LEGEND

MX(X) - XXX - X - XX - XX

IMPEDANCE

- 50 = 50Ω
- 75 = 75Ω
- 95 = 95Ω

CABLE GROUP / MOUNTING STYLE

- 00 = PCB Mount
- 01 = 55U/58/58A/58C/140U/141/141A/142U/223U/303
- 02 = 58 Teflon/58 Thinet/Belden® 9907
- 03 = 59/59A/59B/62/62AU/62B/62C/210
- 04 = 59 Teflon
- 05 = 174U/188A/316U
- 06 = 179U/187U
- 07 = 8/8A/213/214/11/11A
- 08 = 6/6A/143/212
- 09 = Belden® 8227/89207
- 10 = .141 Semi-Rigid
- 11 = .085/.086 Semi-Rigid
- 12 = Bulkhead Mount
- 13 = Chassis Mount
- 14 = Panel Mount

INSULATOR TYPE

- T = Teflon
- D = Delrin
- PP = Polypropylene

TYPE

001 through 999

SERIES

- B = BNC
- T = TNC
- MU = MINI-UHF
- TN = TWINAX
- SA = SMA
- SB = SMB
- MC = MCX
- MX = MMCX
- F = F
- N = N
- U = UHF
- R = RCA
- MR = MINI-RCA
- FM = FME
- P = PAL TV
- SC = SMC
- 7 = DIN 7/16



North and South America:

Methode Electronics, Inc. Connector Products

1700 Hicks Road • Rolling Meadows, IL 60008 USA
847-392-3500 • Toll Free: 800-323-6864 • Fax: 847-392-9404

Email: info@methode.com • Web: www.methode.com/connector/index.html

Europe:

Methode Electronics Ireland, Ltd.

11 Annacotty Business Park • Limerick, Ireland
353 61 330013 • Fax: 353 61 330803

Email: info@methode.ie • Web: ireland.methode.com/main.html

Far East:

Methode Electronics Far East, Pte. Ltd.

1 Tuas Lane, Jurong Town • Singapore 638610
65-68615444 • Fax: 65-68614777

Email: sales@methode.com.sg • Web: www.methode.com/mefe/index.html