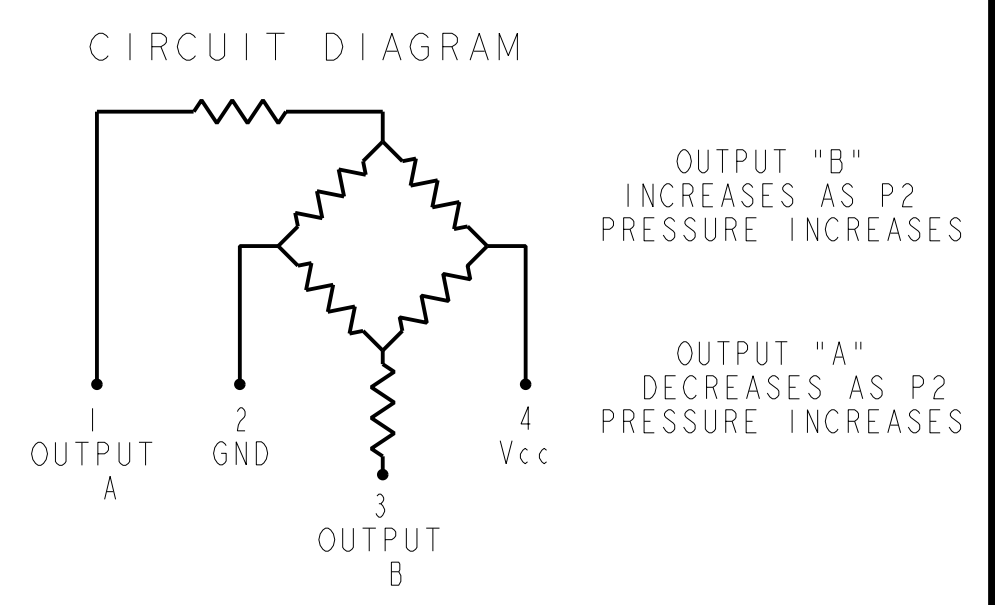


GENERAL OPERATING CHARACTERISTICS (ELECTRICAL PERFORMANCE AT 10.00 ± 0.01 VDC EXCITATION, 25°C)

| PRESSURE RANGE (PSI) | 0 - 1 | | | 0 - 5 | | | 0 - 15 | | | 0 - 30 | | | UNITS |
|--|-----------------------------------|-------|-------|-------|------|------|--------|-------|------|--------|-------|------|-------|
| | MIN | NOM | MAX | MIN | NOM | MAX | MIN | NOM | MAX | MIN | NOM | MAX | |
| SPAN (P2>P1) / 1 | -14.7 | -16.7 | -18.7 | -47 | -50 | -53 | -97 | -100 | -103 | -97 | -100 | -103 | mV |
| NULL OFFSET | -1.5 | 0 | +1.5 | -1.5 | 0 | +1.5 | -1.5 | 0 | +1.5 | -1.5 | 0 | +1.5 | mV |
| | | TYP | MAX | | TYP | MAX | | TYP | MAX | | TYP | MAX | UNITS |
| LINEARITY (BFSL, P2>P1) | | 0.25 | 0.5 | | 0.4 | 0.5 | | 0.25 | 0.5 | | 0.1 | 0.2 | %SPAN |
| NULL SHIFT (0 TO 25°C, 25 TO 50°C) / 2 | | ±0.5 | ±1.0 | | ±0.5 | ±1.0 | | ±0.5 | ±1.0 | | ±0.75 | ±1.5 | mV |
| SPAN SHIFT (0 TO 25°C, 25 TO 50°C) P2>P1 / 2 | | ±1.0 | ±2.0 | | ±1.0 | ±1.5 | | ±0.75 | ±1.5 | | ±0.75 | ±1.5 | %SPAN |
| REPEATABILITY AND HYSTERESIS | | ±0.5 | | | ±0.2 | | | ±0.2 | | | ±0.2 | | %SPAN |
| OVERPRESSURE (P2>P1; P1>P2) | | | 20 | | | 20 | | | 45 | | | 60 | PSI |
| ALL PRESSURE RANGES | MIN | NOM | MAX | UNITS | | | | | | | | | |
| EXCITATION VOLTAGE | | 10 | 16 | VDC | | | | | | | | | |
| INPUT RESISTANCE | 5.5K | 7.5K | 11.5K | OHMS | | | | | | | | | |
| OUTPUT RESISTANCE | 1.5K | 2.5K | 3.0K | OHMS | | | | | | | | | |
| RESPONSE TIME | | | 1.0 | ms | | | | | | | | | |
| TEMPERATURE RANGES | | | | | | | | | | | | | |
| STORAGE | -55°C TO +100°C (-67°F TO +212°F) | | | | | | | | | | | | |
| OPERATE | -40°C TO +85°C (-40°F TO +185°F) | | | | | | | | | | | | |
| COMPENSATED | 0 TO +50°C (+32°F TO +122°F) | | | | | | | | | | | | |

| CATALOG LISTING | LASER BRAND/9 |
|-----------------|---------------|
| 26PCBFA3G | 6BF3G |
| 26PCCFA3G | 6CF3G |
| 26PCDFA3G | 6DF3G |
| 26PCCFD3G | 6CF3G |
| 26PCBFJ3G | 6BF3G |
| 26PCCFJ3G | 6CF3G |
| 26PCAFJ3G | 6AF3G |



- 26PC_F_3G
- STYLE (G) GAGE
 - TERMINATION (3) 1 X 4 (.60 IN.)
 - PORT (A) STRAIGHT (D) MODULAR (J) SMALL NEEDLE
 - SEAL (F) FLUROSILICONE
 - PRESSURE (A) 1 PSI (B) 5 PSI (C) 15 PSI (D) 30 PSI

| METRIC | INCHES |
|--------|--------|
| 0,41 | .016 |
| 0,51 | .020 |
| 1,02 | .040 |
| 1,3 | .05 |
| 1,8 | .07 |
| 1,93 | .076 |
| 2,3 | .09 |
| 2,5 | .10 |
| 5,1 | .20 |
| 6,4 | .25 |
| 7,9 | .31 |
| 8,9 | .35 |
| 9,1 | .36 |
| 12,7 | .50 |
| 15,3 | .60 |
| 16,3 | .64 |
| 21,8 | .86 |
| 22,1 | .87 |

NOTES

- SPAN IS THE ALGEBRAIC DIFFERENCE BETWEEN OUTPUT AT MAXIMUM RATED OPERATING PRESSURE AND OUTPUT AT 0 PSI
- TEMPERATURE ERROR IS CALCULATED WITH RESPECT TO 25°C
- INPUT MEDIA LIMITED ONLY TO THOSE MATERIALS THAT WILL NOT ATTACK SILICON, THE HOUSING MATERIAL OR SEAL MATERIAL
- TERMINALS ARE PLATED FOR SOLDERING (LIMIT SOLDERING TO 315°C FOR 10 SECONDS MAXIMUM)
- PIN 4 IS IDENTIFIED BY NOTCH IN LEAD
- SENSOR IS OPERATIONAL OVER VACUUM PRESSURE RANGE
- RATIOMETRIC TO SUPPLY VOLTAGE#
- DIE ROTATED 90°
- CATALOG LISTING AND DATE CODE HERE. ALTERNATE FORMAT OF CATALOG LISTING IS THE ENTIRE CATALOG LISTING

THIS DRAWING COVERS A PROPRIETARY ITEM AND IS THE PROPERTY OF MICRO SWITCH, A DIVISION OF HONEYWELL. THIS DRAWING IS NOT TO BE COPIED OR USED WITHOUT THE APPROVAL OF MICRO SWITCH.

MICRO SWITCH a Honeywell Division

BRIDGE PRESSURE SENSOR 26PC SERIES CHART 7

CATALOG LISTING

THIRD ANGLE PROJECTION

SCALE 3 : 1

DO NOT SCALE PRINT

UNLESS OTHERWISE SPECIFIED TOLERANCES ARE

| | |
|---------------------|-------|
| ONE PLACE (.0) | ±.030 |
| TWO PLACES (.00) | ±.015 |
| THREE PLACES (.000) | ±.005 |
| ANGLES | ± |

WEIGHT 2.0Z.

ANSI Y14.5M-1982 APPLIES

FED. MFG. CODE 91929

26PC SERIES CHART 7

12

REVISIONS

| | | |
|---|---------|-----------|
| A | 204006 | 28 JUN 05 |
| B | 0001143 | 28 JUN 05 |
| C | 0013886 | 28 JUN 05 |

P.T.C./CAD 2D

JAF