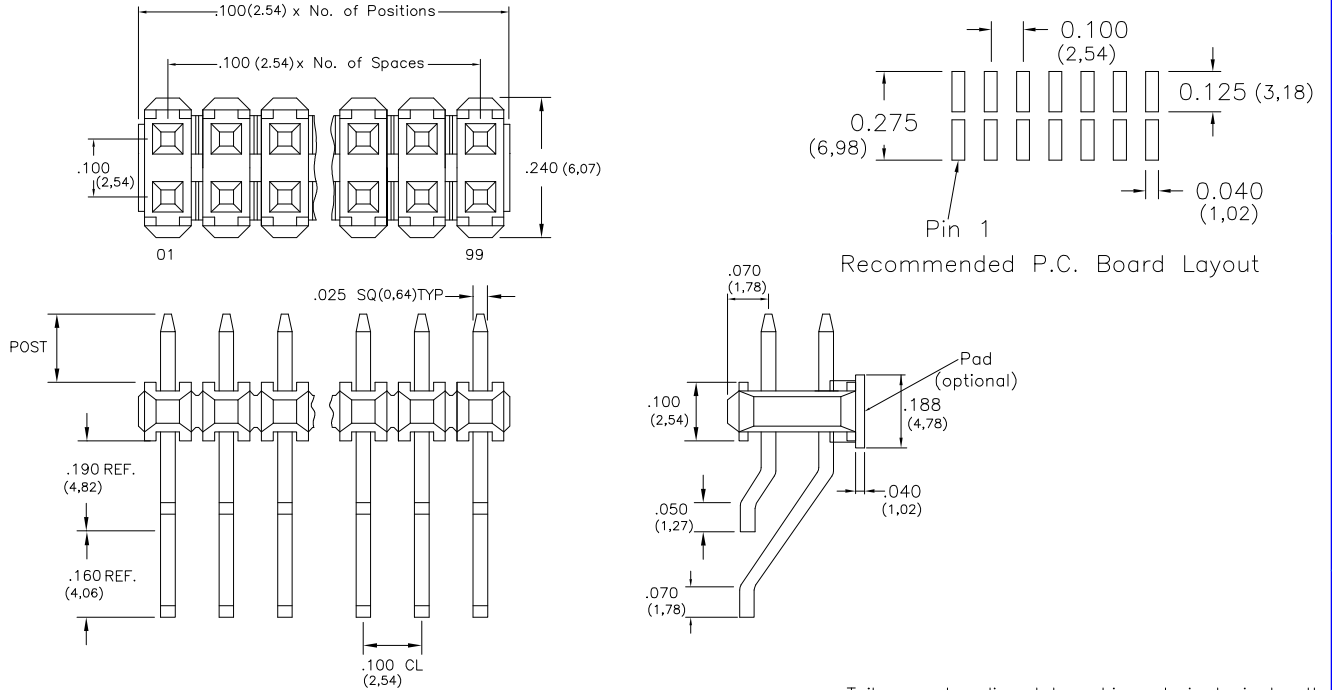


# Major League Electronics .100 cl Terminal Strip Header - Surface Mount - Horizontal



Tails may be clipped to achieve desired pin length

## Ordering Information

TSHSM-1 **XX** - **D** - **XX** - **XX** - **H** - **XXX** - **XX** - **X** - **LF**

Pins Per Row  
01 - 50  
Row Specification  
D = Dual Row

Packing Information  
TR-P = Tape and Reel with Plastic Pick and Place pad  
TB-P = Tube with Plastic Pick and Place pad  
TB-0 = Tube without Pick and Place Pad  
*If left blank, packaging at MLE's discretion*

Polarized Position  
Leave blank if not needed  
If required, specify empty pin position, e.g. 012 for Pin 12  
Horizontal

Pin Options		
Post Height		
.120	3.05mm	01
.230	5.84mm	02
.320	8.12mm	04
.420	10.67mm	06
.530	13.46mm	08
.630	16.00mm	10
.730	18.54mm	12
.830	21.08mm	14
.930	23.62mm	16

Plating Options	
T	Matte Tin all Over
H	30µ Gold on Contact Area / Matte Tin on Tail
GT	10µ Gold on Contact Area / Matte Tin on Tail
F	Gold Flash over Entire Pin

## Specifications

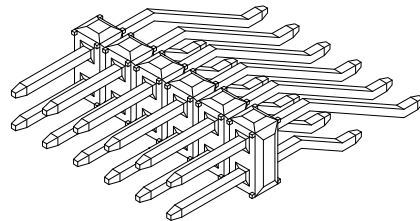
Current Rating: 3.0 Ampere  
Insulation Resistance: 1000MΩ Min.  
Dielectric Withstanding: 600V AC  
Contact Resistance: 20 mΩ Max.  
Operating Temperature: -40°C to + 105°C  
Max. Process Temperature:  
Peak: 260°C up to 20 secs.  
Process: 230°C up to 60 secs.  
Wave: 260°C up to 6 secs.  
Reflow: 260°C up to 10 secs.  
Manual Solder: 350°C up to 5 secs.

## Materials

Contact Material: Phosphor Bronze  
Insulator Material: Nylon 6T  
Plating: Au or Sn over 50µ" (1.27) Ni

## Mates with:

BCSS,  
BSSH,  
BSSHC,  
BSSQ,  
BSSQC,  
BSSQM,  
LBCSS,  
LSMBC,  
LSWSS,  
SMBC,  
SSHQ,  
SSHQR,  
SSHR,  
SSHS,  
SSHSM



Products cut to specific sizes are uncancellable/nonreturnable

Parts are subject to change without notice

TSHSM-1-DH SERIES

.100 cl Dual Row - Horizontal  
Terminal Strip Header - Surface Mount

30 JAN 07

Scale  
NTS

UNLESS OTHERWISE SPECIFIED  
DIMENSIONS IN INCHES (MM)  
TOLERANCES ARE:

ONE PLACE DECIMALS ±.100  
TWO PLACE DECIMALS ±.010  
THREE PLACE DECIMALS ±.005  
FOUR PLACE DECIMALS ±.0020  
ANGLES  
±5°



4235 Earnings Way, New Albany, Indiana, 47150, USA  
1-800-782-3486 (USA/Canada/Mexico)

Tel: 812-944-7244

Fax: 812-944-7268

E-mail: mle@mlelectronics.com

Web: www.mlelectronics.com

Edition  
1

Sheet  
1/1