

NOTES:

1. MATERIALS AND FINISHES:

BODY - BERYLLIUM COPPER, GOLD PLATED (.000030 MIN.)
 CONTACT - BERYLLIUM COPPER, GOLD PLATED (.000050 MIN.)
 INSULATOR AND CAP - LIQUID CRYSTAL POLYMER (LCP)

2. ELECTRICAL PERFORMANCE:

FREQUENCY: DC TO 6 GHz
 V.S.W.R. (MATED PAIR): 1.150 MAX. (DC TO 4.0 GHz)
 1.400 MAX. (4.0 TO 6.0 GHz)
 D.W.V.: 500 VRMS MIN.
 INSULATION RESISTANCE: 500 MOHMS MIN.

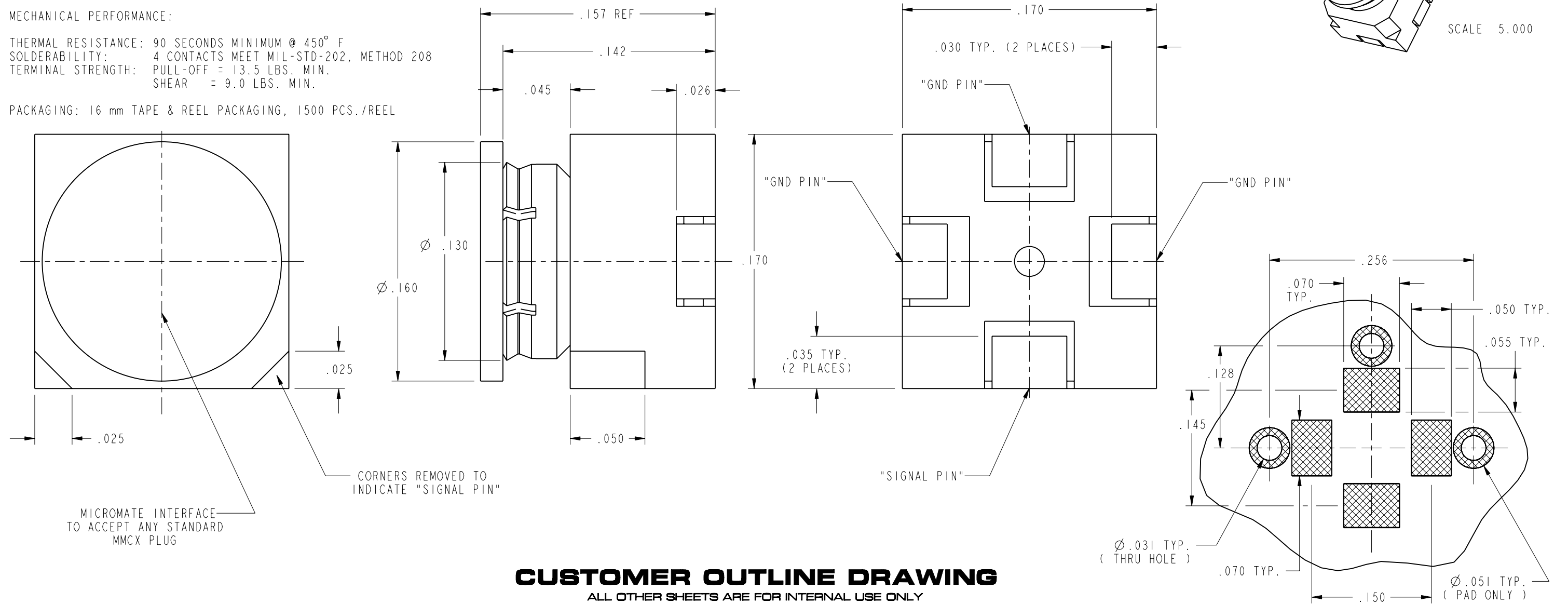
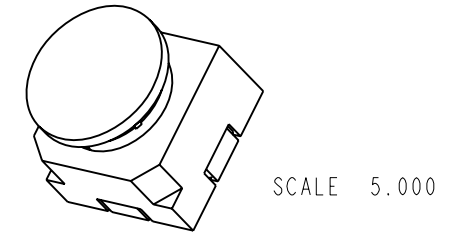
3. MECHANICAL PERFORMANCE:

THERMAL RESISTANCE: 90 SECONDS MINIMUM @ 450° F
 SOLDERABILITY: 4 CONTACTS MEET MIL-STD-202, METHOD 208
 TERMINAL STRENGTH: PULL-OFF = 13.5 LBS. MIN.
 SHEAR = 9.0 LBS. MIN.

4. PACKAGING: 16 mm TAPE & REEL PACKAGING, 1500 PCS./REEL

908-NM22107TC		REVISIONS			
DRAWING NO.	REV	DESCRIPTION	DATE	ECO	APPR
THIRD ANGLE PROJ.	A	RELEASE TO MFG.	10/26/07	46785	CPM

NO MATERIAL OR PLATING SUBSTITUTIONS



CUSTOMER OUTLINE DRAWING

ALL OTHER SHEETS ARE FOR INTERNAL USE ONLY

UNLESS OTHERWISE SPECIFIED, DIMENSIONS ARE IN INCHES AND TOLERANCES ARE: 2 PLACE DECIMAL ±.015 (0,381 mm) 3 PLACE DECIMAL ±.005 (0,127 mm) ANGLES ± 1°	MATERIAL	DRAWN C. McGRATH	DATE 9/27/07	TITLE MICROMATE FEMALE SURFACE MOUNT (TAPE & REEL)		Amphenol RF Danbury, CT, USA Tainan, Taiwan Shenzhen, China www.amphenolrf.com				
	NOTICE - These drawings, specifications, or other data (1) are, and remain the property of Amphenol Corp. (2) must be returned upon request; and (3) are confidential and not to be disclosed to any person other than those to whom they are given by Amphenol Corp. The furnishing of these drawings, specifications, or other data by Amphenol Corp., or to any other person to anyone for any purpose is not to be regarded by implication or otherwise in any manner licensing, granting rights or permitting such holder or any other person to manufacture, use or sell any product, process or design, patented or otherwise, that may in any way be related to or disclosed by said drawings, specifications, or other data.	REFERENCE EAR 2250 SAME AS 908-22101TC GEN# ASSYFI_MMCX	ENGINEER P. BRENZEL	DATE 30 JUN 99	APPROVED M. HOYACK	DATE 10/22/07	SCALE: 15.0:1 SHEET 2 OF 3	CODE ID 74868	DWG SIZE B	DRAWING NO. 908-NM22107TC