

# 2,000V - 3,000V Surface Mount Multiplier

Original Release: 08-11-08  
Revised Date: 06-06-11

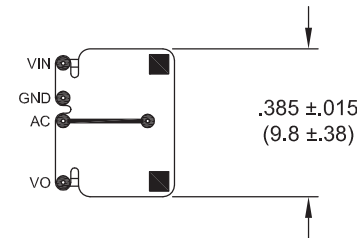
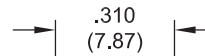
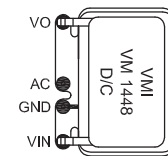
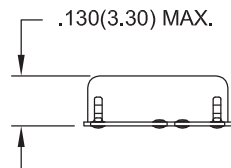
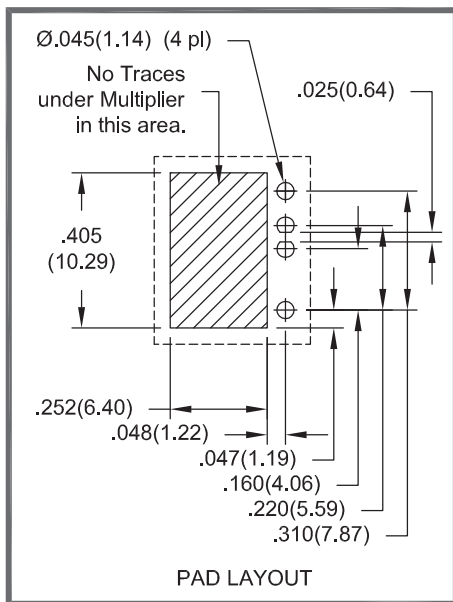
0 $\mu$ A - 50.0 $\mu$ A • 6 - 8 Stages

| ELECTRICAL CHARACTERISTICS AND MAXIMUM RATINGS |                            |  |   |                                  |                   |                  |
|--|----------------------------|--|---|----------------------------------|-------------------|------------------|
| Part Number                                    | Maximum A.C. Input Voltage | Maximum D.C. Output Voltage (One Multiplier) | Maximum D.C. Output Voltage (Two Multipliers in Series or Floating) | Typical Output Current Range (1) | Typical Frequency | Number of Stages |
|  | V <sub>PP</sub>            | V <sub>DC</sub>                              | V <sub>DC</sub>   | $\mu$ A                          | kHz               |                  |
| VM1448   | 800                        | 3000   | 6000  | 0 - 50.0                         | 10 - 100          | 8                |
| VM1548   | 800                        | - 2000                                       | - 4000  | 0 - 50.0                         | 10 - 100          | 6                |

Operating Temp: -55°C to +150°C      Storage Temp: -65°C to +150°C

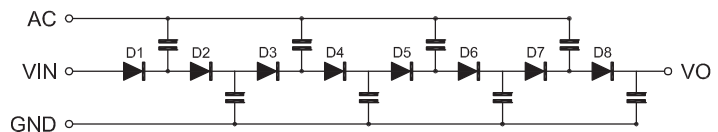
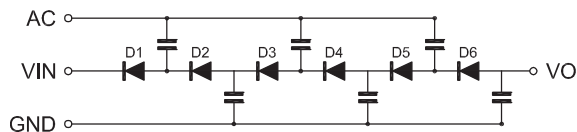
Plating:  
Electroless Nickel / Immersion Gold  
(ENIG) per IPC-4552.

Tolerance:  
.XXX  $\pm$ .010



VM1548

VM1448



Dimensions: In. (mm) • All temperatures are ambient unless otherwise noted. • Data subject to change without notice.



Voltage Multipliers Inc.

8711 W. Roosevelt Ave.  
Visalia, CA 93291 USA

Tel: 559.651.1402  
Fax: 559.651.0740

www.voltagemultipliers.com  
www.highvoltagepowersupplies.com