



TO :

DATE : Sep.. 04. 2009

SMD TFT-LCD

MODEL NO. : LMS350DF01

Customer Approval

Any Modification of Spec is not allowed without SMD's permission.

Approved by : Se chun, Oh

Samsung Mobile Display Co.



EVERYWHERE
WITH YOUR EYES

Contents

Revision History	----- (3)
General Description	----- (4)
1. Absolute Maximum Ratings	----- (5)
1.1 Absolute Ratings Of Environment	
1.2 Electrical Absolute Ratings	
2. Optical Characteristics	----- (7)
3. Electrical Characteristics	----- (10)
3.1 TFT-LCD Module	
3.2 Back-light Unit	
4. Block Diagram	----- (11)
4.1 TFT-LCD Module with Back Light Unit	
4.2 Back Light Unit	
5. Input Terminal Pin Assignment	----- (12)
5.1 Input Signal & Power	
5.2 Input Signal, Basic Display Colors and Gray Scale of Each Colors	
6. Operation Specifications	----- (14)
6.1 Dot Formation	
6.2 Data Format for 8 bit RGB interface	
7. Interface Timing	----- (15)
7.1 8bit RGB Interface Timing	
7.2 Serial Peripheral Interface	
8. Electrical Specifications	----- (17)
9. Power Sequence	----- (19)
9.1 Power on Sequence	
9.2 Power off Sequence	
9.3 Standby In / Out Sequence	
10. Application Circuit	----- (23)
11. Module Outline Dimension	----- (24)
12. Reliability Test Result	----- (25)
12.1 Condition	
12.2 Judgement	
13. Packing	----- (27)
14. Marking and Others	----- (29)
15. General Precaution	----- (30)
15.1 Handling	
15.2 Storage	
15.3 Operation	
15.4 Others	

Data	Rev. No.	Page	Summary
Jan. 08. 2008	000		Rev.000 was first issued.
Jan. 30. 2008			Power sequence added.
			Interface changed. (RGB24bit → RGB 8bit)
			Logic Voltage changed. (VDD3 : 3.3V→ 1.8V)
		23	Component description added.
		7	Optical specification updated.
		19	Power sequence revised.
		24	Outline Dimension revised. (FPC length increased 0.2mm.)
June. 16. 2008		10	VDD3 = 3.3V added.
July. 09. 2008		4	Typing error modified.
	6	BLU Max current changed. (30mA → 25mA)	
	7	Optical specification updated..	
	10	Standby power consumption revised. & Dissipation check pattern changed.	
	11	Backlight power consumption added.	
	19	Power On sequence revised.	
July. 28. 2008	19	Power On sequence revised.	
	24	Outline Dimension revised. (FPC silk removed.(top side))	
April. 09. 2009	24	Module thickness tolerance revised. (Modify the Mechanical Information & Outline Dimension)	
	19	Power On Sequence revised.	
August. 14. 2009	19	Power On Sequence revised.	
	25	Reliability Test spec and result added.	
	28	Box label revised.	

General Description

* Description

LMS350DF01 is a TMR(Transmissive with Micro Reflective) type color active matrix TFT (Thin Film Transistor) liquid crystal display (LCD) that uses amorphous silicon TFT as a switching devices. This model is composed of a TFT-LCD module, a driver circuit and a back-light unit. The resolution of a 3.5" contains 320 x 480 dots and can display up to 16,777,216 colors.

* Features

- Transmissive with Micro Reflective type and back-light with 5LEDs.
- mPVA mode (Normally Black).
- Wide Viewing Angle.
- Stripe Pixel structure.
- 8bit RGB Interface + Serial Peripheral Interface (SPI)
- Gate Driver IC embeded on Panel
- Low Power consumption.

* Applications

- Display terminals for HHP, MP3, PMP application products.

* General information

Items	Specification	Unit	Note
Display Area	48.96(H) x 73.44(V)	mm	-
Driver Element	a-Si TFT active matrix	-	-
Display Colors	16.7 M	color	-
Number of Pixels	320(H) x 480(V)	pixel	-
Pixel Arrangement	Stripe Structure	-	-
Pixel Pitch	0.153(H) x 0.153(V)	mm	-
Display Mode	Normally Black	-	-

* Mechanical information

Item		Min.	Typ.	Max.	Unit	Note
Module size	Horizontal(H)	54.56	54.76	54.96	mm	(1)
	Vertical(V)	83.04	83.24	83.44	mm	(1)
	Depth(D)	1.68	1.83	1.98	mm	(1)
Weight		-	13	-	g	(2)

Note (1) : Not include FPC

Refer to the Outline Dimension in the page 28 for further information.

Note (2) : Included FPC

1. Absolute Maximum Ratings

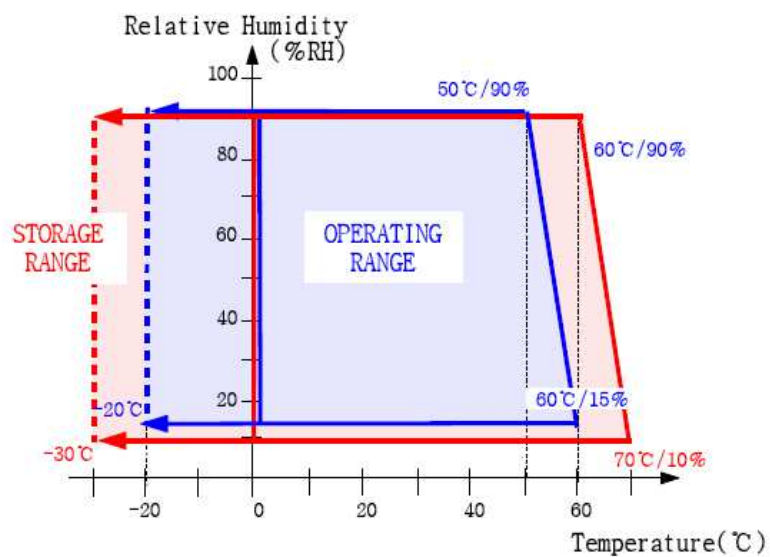
1.1 Absolute Ratings of Environment

Item	Symbol	Min.	Max.	Unit	Note
Storage temperature	T _{STG}	-30	70	°C	(1)
Operating temperature (Ambient temperature)	T _{OPR}	-20	60	°C	(1),(2)

Note (1) 90 % RH Max. (50°C Ta)

Maximum wet-bulb temperature at 49°C or less. (Ta > 50°C)

No con



Temperature & Humidity Graph at Absolute Environment

- (2) In case of below 0°, the response time of liquid crystal (LC) becomes slower and the color of panel becomes darker than normal one. Level of retardation depends on temperature, because of LC's characteristics.
- (3) If any fixed pattern is displayed on LCD for minutes, image-sticking phenomenon may occur.

1.2 Electrical Absolute Ratings

(1) TFT-LCD Module

(Ta = 25°C ± 2°C, GND=0V)

Characteristics	Symbol	Min.	Max.	Unit	Note
Logic Input Voltage	VDD3	-0.3	5.0	V	(1)
Analog Input Voltage	VCI	-0.3	5.0	V	(1)

(2) Back-Light Unit

(Ta = 25 ± 2°C)

Item	Symbol	Min.	Max.	Unit.	Note
Current	I_B	-	25	mA	(1)

**Note (1) Permanent damage to the device may occur if maximum values are exceeded or reverse voltage is loaded.
Functional operation should be restricted to the conditions described under normal operating conditions.**

2. Optical Characteristics

The following items are measured under stable conditions. The optical characteristics should be measured in a dark room or equivalent state with the methods shown in Note (1). Measuring equipment: SR-3, BM-7, EZ-Contrast

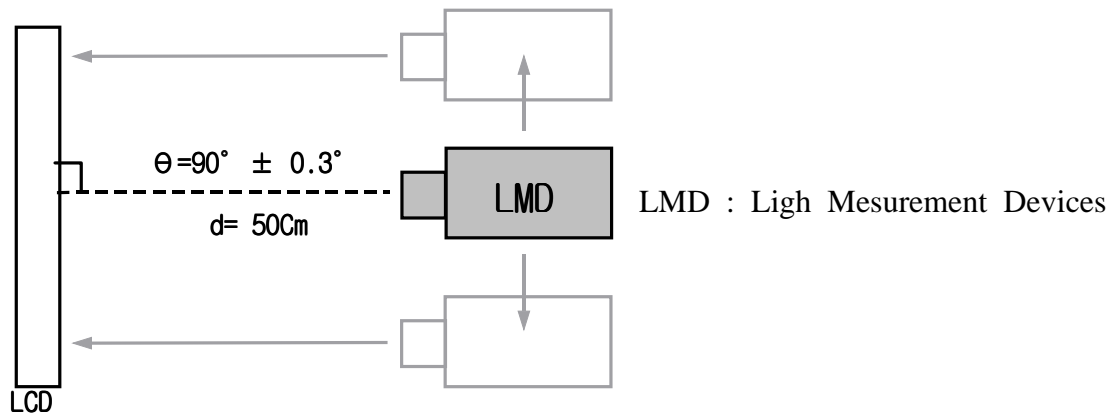
(Ta = 25 ± 2°C, VDD3 = VCI = 3.3V, Ib = 20mA)

Item	Symbol	Condition	Min.	Typ.	Max.	Unit	Note
Contrast ratio (Center point)	C/R	Note (1), (6) $\Phi = 0$ $\Theta = 0$ Normal Viewing Angle B/L On	500	800	-	-	(2) SR-3
Luminance of white (Center point)	Y _L		285	380	-	cd/m ²	(3) SR-3
Response time	Rising: Tr Falling: Tf		Tr+Tf	-	30	35	msec
Color chromaticity (CIE 1931)	White	Wx	0.270	0.320	0.370	-	(5) SR-3
		Wy	0.297	0.347	0.397		
	Red	Rx	0.555	0.605	0.655		
		Ry	0.278	0.328	0.378		
	Green	Gx	0.278	0.328	0.378		
		Gy	0.533	0.583	0.633		
	Blue	Bx	0.101	0.151	0.201		
		By	0.061	0.111	0.161		
Viewing angle	Hor.	Θ L	80	-	-	Degrees	(6) Ez - Contrast
		Θ R	80	-	-		
	Ver.	Φ H	80	-	-		
		Φ L	80	-	-		

Note (1) Test Equipment Setup

After stabilizing and leaving the panel alone at a given temperature for 30 min, the measurement should be executed. Measurement should be executed in a stable, windless, and dark room. 30 min after lighting the back-light. This should be measured in the center of screen.

- Environment condition : Ta = 25 ± 2 °C
- Back-Light On condition



Note (2) Definition of Contrast Ratio (C/R) : Ratio of gray max (Gmax) & gray min (Gmin) at the center point

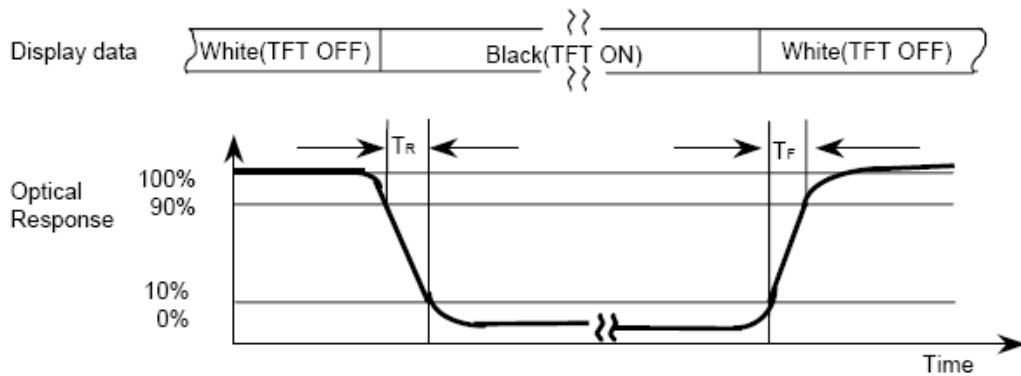
$$CR = \frac{G_{max}}{G_{min}}$$

- * Gmax : Luminance with all dots white
- * Gmin : Luminance with all dots black

Note (3) Definition of Luminance of White (YL)

: Luminance of white at the center point

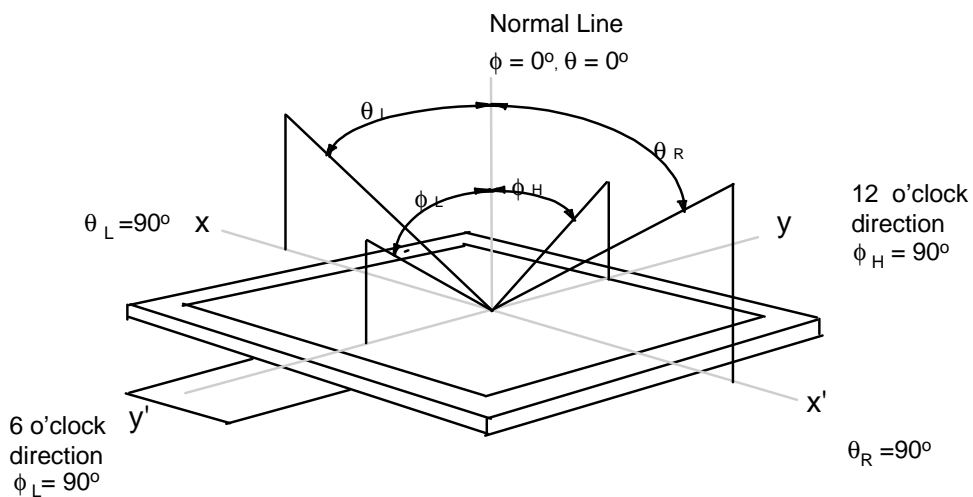
Note (4) Definition of Response time : Sum of Tr and Tf (Field : 1)



Note (5) Definition of Color Chromaticity (CIE 1931)

Color coordinate of white & red, green, blue at center point.

Note (6) Definition of Viewing Angle : Viewing angle range (CR≥10)



3. Electrical Characteristics

3.1 TFT-LCD Module

Ta = 25 ± 2°C

Characteristics	Symbol	Min.	Typ.	Max.	Unit	Note
Logic Input Voltage	VDD3	1.75	1.8	1.85	V	-
		3.25	3.3	3.35		
Analog Input Voltage	VCI	3.25	3.3	3.35	V	-
Power Dissipation	P _{FULL}	-	25	30	mA	(1),(2)
	P _{standby}		25	100	uA	
Frame frequency	f _{Frame}	-	60	-	Hz	-
Dot Clock	DCK	-	30	32	MHz	-
Serial Clock	XSCK	-	-	10	MHz	-

* To prevent a latch-up or DC operation of the LCD module, the power on/off sequence should be as the Chapter 10. Power On/Off Sequence.

Note (1) VDD3 = 1.8 or 3.3V, VCI = 3.3V f_{Frame} = 60 Hz
 (2) Dissipation current check pattern

▶ White pattern



3.2 Back-Light unit

The back-light system is an edge-lighting type with five white LED (Light Emitting Diode)s.

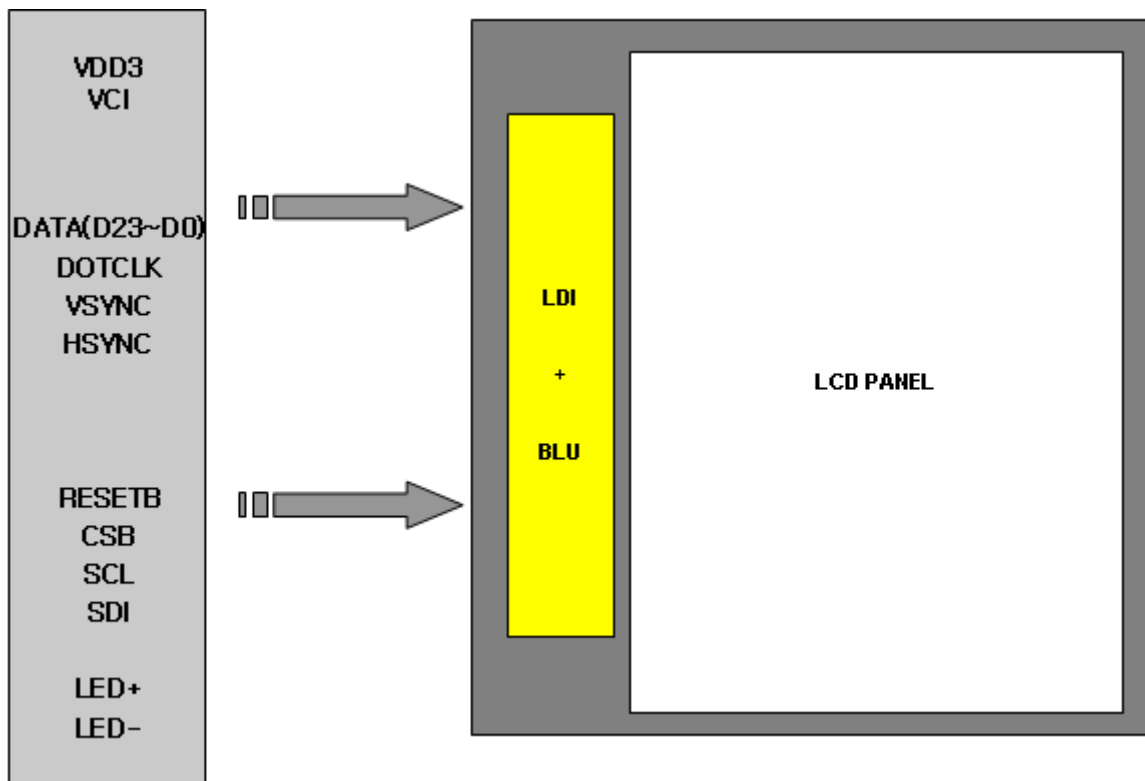
(Ta=25 ± 2°C)

Item	Symbol	Min.	Typ.	Max.	Unit	Note
Current	I _B	-	20	-	mA	(1)
Power Consumption	P _{BL}	-	330	-	mW	-

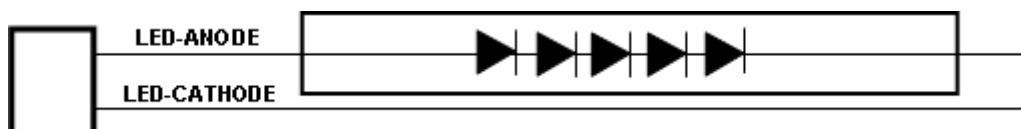
Note (1) Five LEDs serial type.

4. Block Diagram

4.1 TFT-LCD Module (Interface System Structure)



4.2 Back Light Unit



5. Input Terminal Pin Assignment

5.1 Input Signal & Power (8bit RGB I/F, BTB Connector: DF30FC-70DS-0.4V)

Pin No	Symbol	Description	I/O	Pin No	Symbol	Description	I/O
1	LED+	LED Anode	I	36	VCI	Analog Input Voltage	I
2	GND	Ground	I	37	PD10	GND or VDD3	I
3	NC	No Connector	-	38	VCI	Analog Input Voltage	I
4	VGOFFL	Power Output for ASG driver	O	39	PD9	GND or VDD3	I
5	LED-	LED Cathode	I	40	C23M	Charge Pumping Capacitor	O
6	GND	Ground	I	41	PD8	GND or VDD3	I
7	GND	Ground	I	42	C23P	Charge Pumping Capacitor	O
8	VGL	Gate Off Voltage	O	43	GND	GND or VDD3	I
9	PD23	D7	I	44	VCL	Power Supply for Generating VCOML	O
10	GND	Ground	I	45	PD7	GND or VDD3	I
11	PD22	D6	I	46	VSSA	Ground	I
12	VGH	Gate On Voltage	O	47	PD6	GND or VDD3	I
13	PD21	D5	I	48	VCOMH	VCOM High Level	O
14	C22P	Charge Pumping Capacitor	O	49	PD5	GND or VDD3	I
15	PD20	D4	I	50	VCOML	VCOM Low Level	O
16	C22M	Charge Pumping Capacitor	O	51	PD4	GND or VDD3	I
17	PD19	D3	I	52	GVDD	Gamma Voltage Generator	O
18	C21P	Charge Pumping Capacitor	O	53	PD3	GND or VDD3	I
19	PD18	D2	I	54	RVDD	Regulated VDD output	O
20	C21M	Charge Pumping Capacitor	O	55	PD2	GND or VDD3	I
21	PD17	D1	I	56	VDD3	Logic Input Voltage	I
22	AVDD	Power Output for Source Driver	O	57	PD1	GND or VDD3	I
23	PD16	D0	I	58	VDD3	Logic Input Voltage	I
24	C11Pb	Charge Pumping Capacitor	O	59	PD0	GND or VDD3	I
25	GND	Ground	I	60	VSYNC	Vsync	I
26	C11Mb	Charge Pumping Capacitor	O	61	GND	Ground	I
27	PD15	GND or VDD3	I	62	HSYNC	Hsync	I
28	C11P	Charge Pumping Capacitor	O	63	DOTCLK	Dotclk	I
29	PD14	GND or VDD3	I	64	SCL	Serial Clock	I
30	C11M	Charge Pumping Capacitor	O	65	SDI	Serial Data Input	I
31	PD13	GND or VDD3	I	66	CSB	Chip Select	I
32	VSSC	Ground	I	67	ENABLE	Enable(GND)	I
33	PD12	GND or VDD3	I	68	RESETB	Reset	I
34	VCI1	Reference Voltage In Step Up Circuit	O	69	GND	Ground	I
35	PD11	GND or VDD3	I	70	GND	Ground	I

5.2 Input Signal, Basic Display Colors and Gray Scale of Each Colors

COLOR	DISPLAY	DATA SIGNAL																				GRAY SCALE LEVEL				
		RED							GREEN							BLUE										
		R0	R1	R2	R3	R4	R5	R6	R7	G0	G1	G2	G3	G4	G5	G6	G7	B0	B1	B2	B3		B4	B5	B6	B7
BASIC COLOR	BLACK	0	0	0	0	0	0	0	0	0	0	0	0	0	0	0	0	0	0	0	0	0	0	0	0	-
	BLUE	0	0	0	0	0	0	0	0	0	0	0	0	0	0	0	0	1	1	1	1	1	1	1	1	-
	GREEN	0	0	0	0	0	0	0	0	1	1	1	1	1	1	1	1	0	0	0	0	0	0	0	0	-
	CYAN	0	0	0	0	0	0	0	0	1	1	1	1	1	1	1	1	1	1	1	1	1	1	1	1	-
	RED	1	1	1	1	1	1	1	1	0	0	0	0	0	0	0	0	0	0	0	0	0	0	0	0	-
	MAGENTA	1	1	1	1	1	1	1	1	0	0	0	0	0	0	0	0	1	1	1	1	1	1	1	1	-
	YELLOW	1	1	1	1	1	1	1	1	1	1	1	1	1	1	1	1	0	0	0	0	0	0	0	0	-
	WHITE	1	1	1	1	1	1	1	1	1	1	1	1	1	1	1	1	1	1	1	1	1	1	1	1	-
GRAY SCALE OF RED	BLACK	0	0	0	0	0	0	0	0	0	0	0	0	0	0	0	0	0	0	0	0	0	0	0	R0	
	DARK ↑	1	0	0	0	0	0	0	0	0	0	0	0	0	0	0	0	0	0	0	0	0	0	0	R1	
		0	1	0	0	0	0	0	0	0	0	0	0	0	0	0	0	0	0	0	0	0	0	0	R2	
		:	:	:	:	:	:	:	:	:	:	:	:	:	:	:	:	:	:	:	:	:	:	:	:	R3~R252
		:	:	:	:	:	:	:	:	:	:	:	:	:	:	:	:	:	:	:	:	:	:	:	:	
	LIGHT ↓	1	0	1	1	1	1	1	1	0	0	0	0	0	0	0	0	0	0	0	0	0	0	0	R253	
		0	1	1	1	1	1	1	1	0	0	0	0	0	0	0	0	0	0	0	0	0	0	0	R254	
	RED	1	1	1	1	1	1	1	1	0	0	0	0	0	0	0	0	0	0	0	0	0	0	0	R255	
GRAY SCALE OF GREEN	BLACK	0	0	0	0	0	0	0	0	0	0	0	0	0	0	0	0	0	0	0	0	0	0	0	G0	
	DARK ↑	0	0	0	0	0	0	0	0	1	0	0	0	0	0	0	0	0	0	0	0	0	0	0	G1	
		0	0	0	0	0	0	0	0	0	1	0	0	0	0	0	0	0	0	0	0	0	0	0	G2	
		:	:	:	:	:	:	:	:	:	:	:	:	:	:	:	:	:	:	:	:	:	:	:	G3~G252	
		:	:	:	:	:	:	:	:	:	:	:	:	:	:	:	:	:	:	:	:	:	:	:		
	LIGHT ↓	0	0	0	0	0	0	0	0	1	0	1	1	1	1	1	1	0	0	0	0	0	0	0	G253	
		0	0	0	0	0	0	0	0	0	1	1	1	1	1	1	1	0	0	0	0	0	0	0	G254	
	GREEN	0	0	0	0	0	0	0	0	1	1	1	1	1	1	1	1	0	0	0	0	0	0	0	G255	
GRAY SCALE OF BLUE	BLACK	0	0	0	0	0	0	0	0	0	0	0	0	0	0	0	0	0	0	0	0	0	0	0	B0	
	DARK ↑	0	0	0	0	0	0	0	0	0	0	0	0	0	0	0	0	1	0	0	0	0	0	0	B1	
		0	0	0	0	0	0	0	0	0	0	0	0	0	0	0	0	0	1	0	0	0	0	0	B2	
		:	:	:	:	:	:	:	:	:	:	:	:	:	:	:	:	:	:	:	:	:	:	:	B3~B252	
		:	:	:	:	:	:	:	:	:	:	:	:	:	:	:	:	:	:	:	:	:	:	:		
	LIGHT ↓	0	0	0	0	0	0	0	0	0	0	0	0	0	0	0	0	1	0	1	1	1	1	1	B253	
		0	0	0	0	0	0	0	0	0	0	0	0	0	0	0	0	0	1	1	1	1	1	1	B254	
	BLUE	0	0	0	0	0	0	0	0	0	0	0	0	0	0	0	0	1	1	1	1	1	1	1	B255	

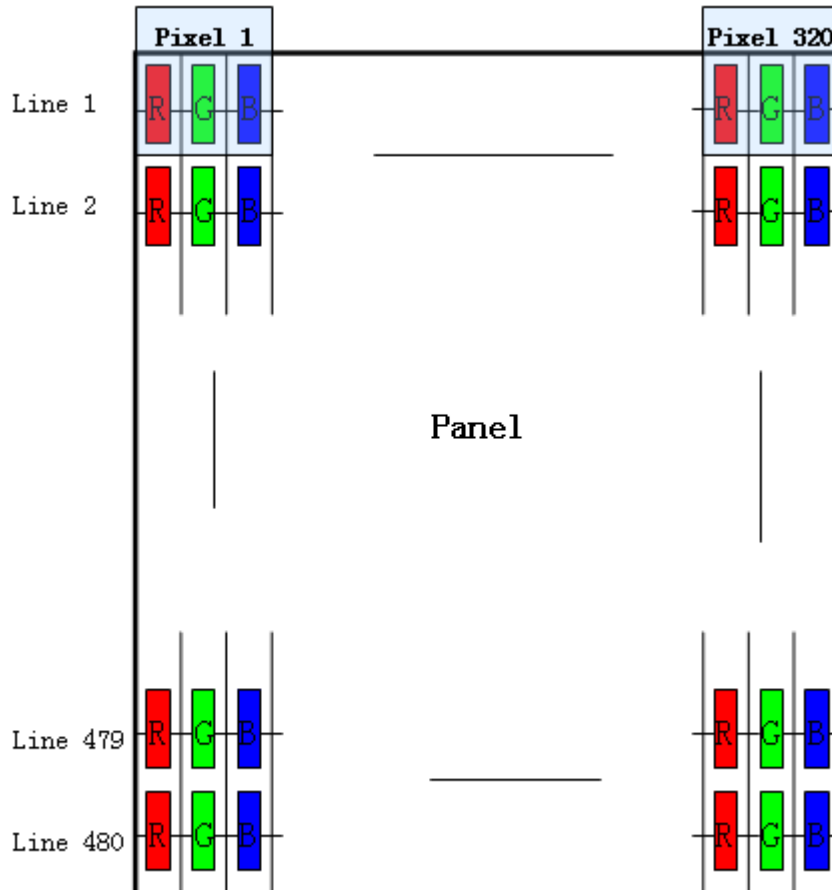
Note) Definition of Gray :

R_n : Red Gray, G_n : Green Gray, B_n : Blue Gray (n = Gray level)

Input Signal : 0 = Low level voltage, 1 = High level voltage

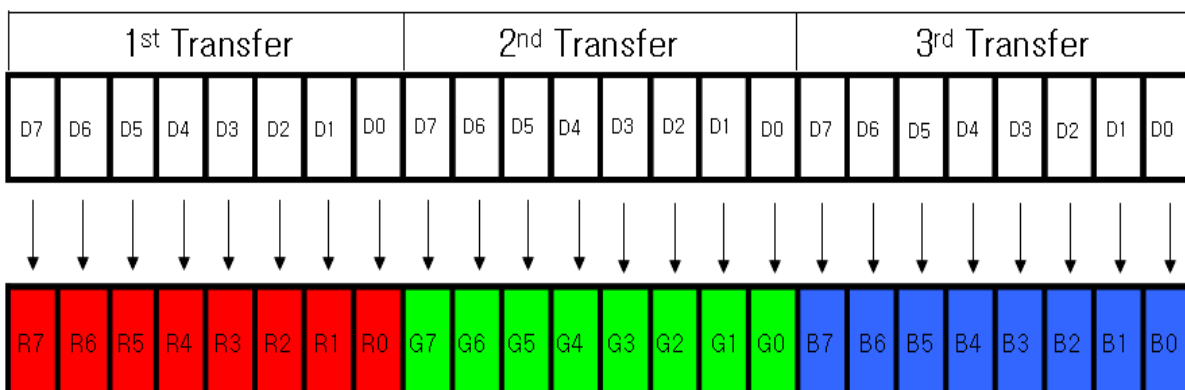
6. Operation Specifications

6.1 Pixel Formation (Stripe Pixel Structure)



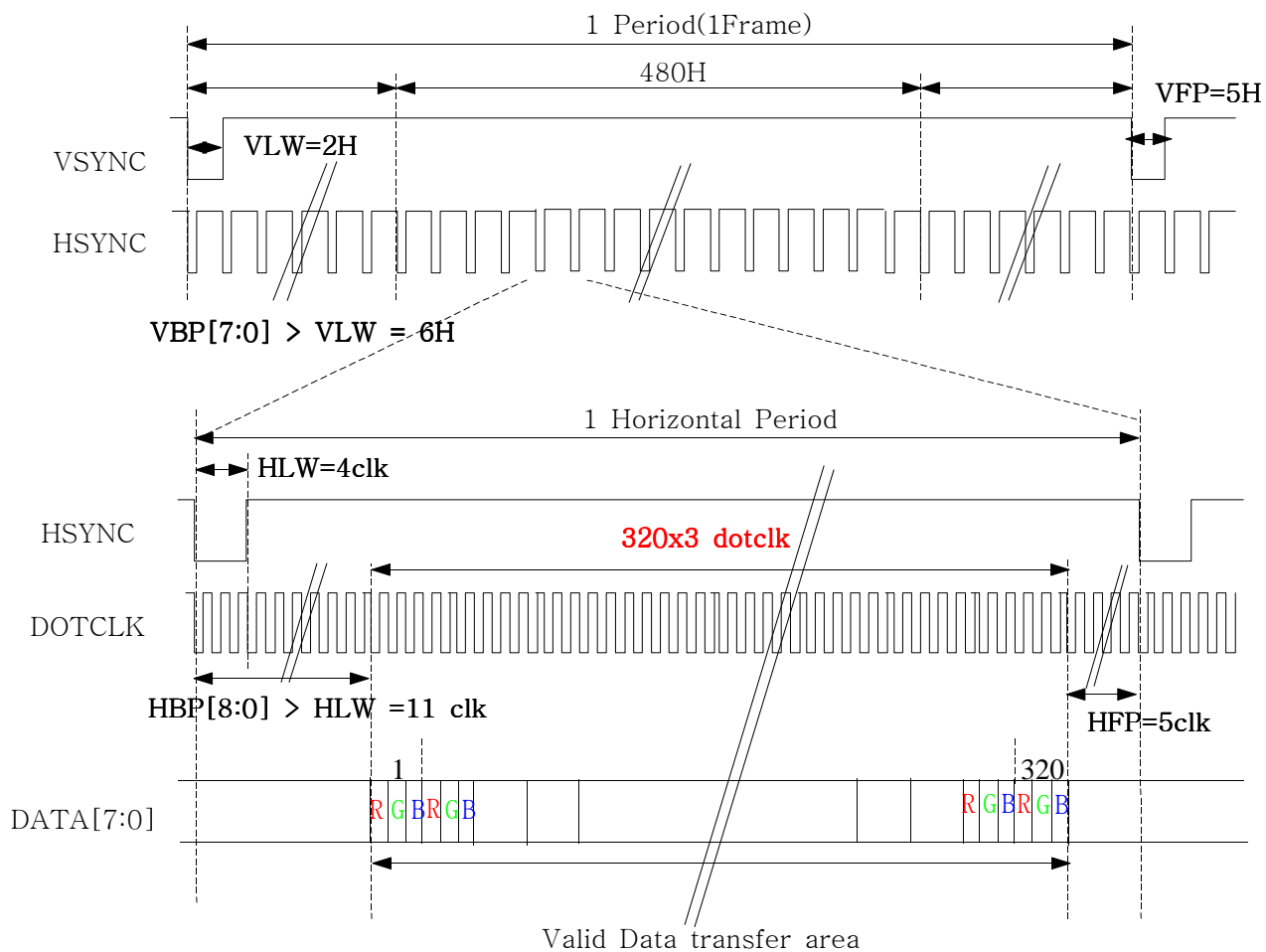
6.2 Data Format for 8bit RGB Interface

8bit 3times Transfer



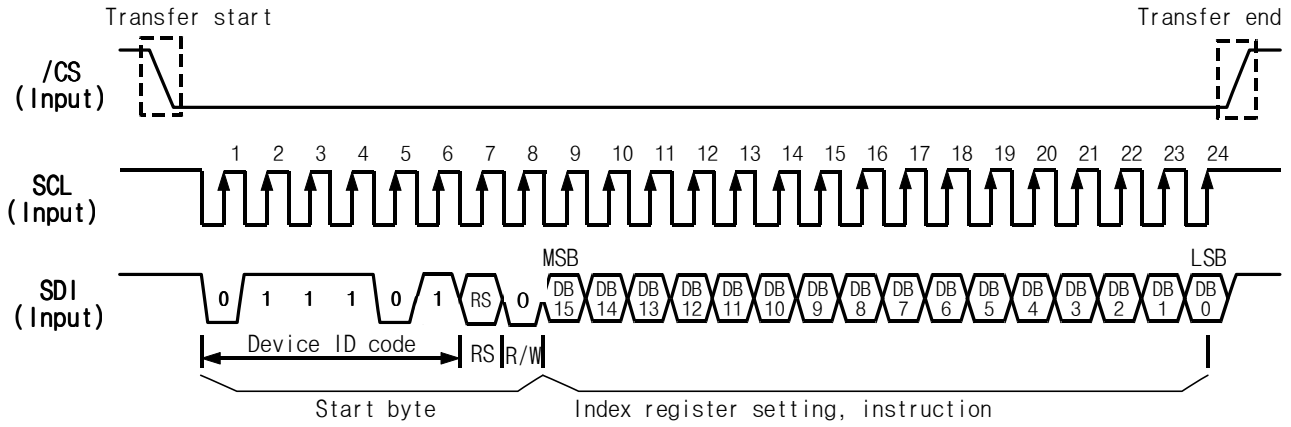
7. Interface Timing

7.1 8bit RGB Interface Timing



- * $DOTCLK = [f_{frame} \times (480 + VBP + VFP) \times (320 + HBP + HFP)] \times 3$
 $= [(60)Hz \times (480 + VBP + VFP) \times (320 + HBP + HFP)] \times 3$
- * $VBP \geq 3$, $VBP > VLW \geq 2$
- * $HBP \geq 24$, $HBP > HLW \geq 2$

7.2 Serial Peripheral Interface



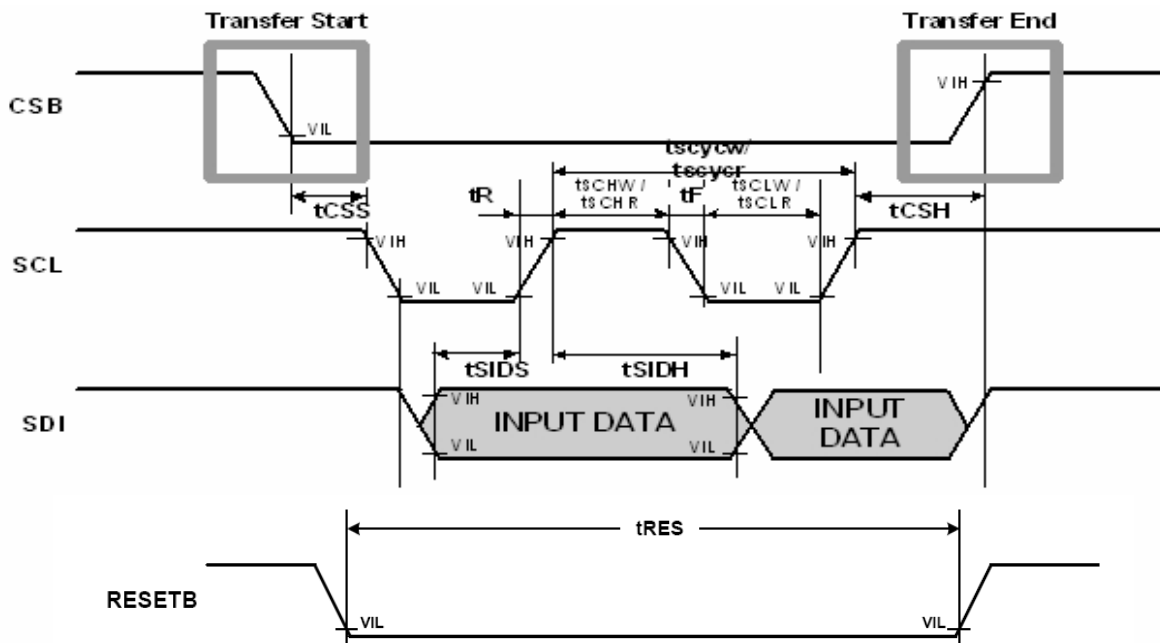
(Note) RS="0": Index data

RS="1": Instruction data

8. Electrical Specifications

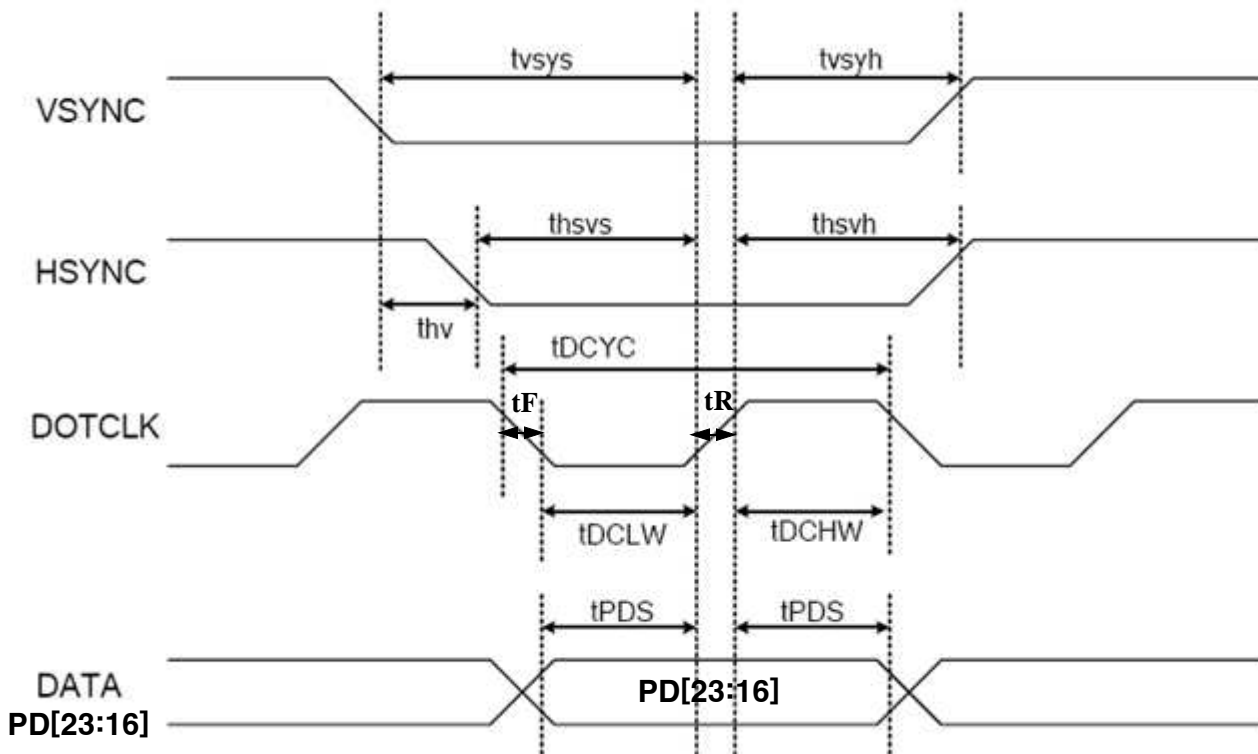
VDD3 = 1.8/3.3V, Ta = 25°C ± 2°C

Item	Symbol	Min.	Max.	Unit
Serial Clock Cycle Time(write)	tSCYCW	100	-	ns
Serial Clock rise/fall time	tR,tF	-	10	
Pulse width high for write	tSCHW	30	-	
Pulse width low for write	tSCLW	50	-	
Chip Select Setup Time	tCSS	20	-	
Chip Select Hold Time	tCSH	90	-	
Serial Input Data Setup Time	tSIDS	30	-	
Serial Input Data Hold Time	tSIDH	30	-	
Serial Output Data delay Time	tSODD	-	200	
Serial Output Data Hold Time	tSODH	5	-	
Reset Low Pulse Width	tRES	30	-	us
CSB Low Pulse Width for Wake up	tCSBR	12	-	



VDD3 = 1.8/3.3V, Ta = 25°C ± 2°C (8bit)

Item	Symbol	Min.	Max.	Unit
Vsync/Hsync Setup Time	T _{vsys} T _{hsvs}	20	-	ns
Vsync/Hsync Hold Time	T _{vsyh} T _{hsvh}	20	-	
Dotclk Low Level Pulse Width	t _{DCLW}	17	-	
Dotclk High Level Pulse Width	t _{DCHW}	17	-	
Dotclk Cycle Time	t _{DCYC}	30	-	
PD(Data) Setup Time	t _{PDS}	12	-	
PD(Data) Hold Time	t _{PDH}	12	-	
Dotclk Rise/Fall Time	t _R , t _F	-	5	



. Power On/Off Sequence (*Can be changed for better quality)

9.1 Power On Sequence

POWER ON Sequence

Wait 1ms

/ RESET
R07h = 0000

Wait more than 10ms

R11h = 222Fh
 R12h = 0F00h
 R13h = 7FE3h
 R76h = 2213h
 R74h = 0001h
 R76h = 0000h
 R10h = 5604h

Wait more than 6frames

R12h = 0C63h

Wait more than 5frames

R01h = 0B3B (note1)
 R02h = 0300
 R03h = C040(note2)
 R08h = 0004(note3)
 R09h = 000B(note4)
 R76h = 2213
 R0Bh = 3340
 R0Ch = 0020
 R1Ch = 7770
 R76h = 0000
 R0Dh = 0000
 R0Eh = 0500
 R14h = 0000
 R15h = 0803
 R16h = 0000
 R30h = 0005
 R31h = 070F
 R32h = 0300
 R33h = 0003
 R34h = 090C
 R35h = 0001
 R36h = 0001
 R37h = 0303
 R38h = 0F09
 R39h = 0105

DISPLAY ON Sequence

R07h = 0001h

Wait more than 1frame

R07h = 0101h

Wait more than 2frame

R07h = 0103h

Display ON

9.2 Power Off Sequence

R10h = 0001
R0Bh = 30E1
R07h = 0102

Wait more than 2frames

R07h = 0000
R12h = 0000
R10h = 0100

Power OFF

9.3 Standby In / Out Sequence

Display On Status

Display Off Sequence

R10h = 0001

Standby IN

Standby In Status

R10h = 0000

Power On Sequence

Display On Sequence

Standby OUT

Note 1) Inversion Setting

DB15	DB14	DB13	DB12	DB11	DB10	DB9	DB8	DB7	DB6	DB5	DB4	DB3	DB2	DB1	DB0
0	0	0	0	BGR	0	TB	SS	0	0	1	1	1	0	1	1

* **BGR** : Color Inversion (0 : R ↔ B, 1 : bypass)

* **TB** : Vertical Inversion (0 : Bottom → Top, 1 : Top → Bottom)

* **SS** : Horizontal Inversion (0 : Right → Left, 1 : Left → Right)

Note 2) Polarity Setting

DB15	DB14	DB13	DB12	DB11	DB10	DB9	DB8	DB7	DB6	DB5	DB4	DB3	DB2	DB1	DB0
VPL	HPL	DPL	0	0	0	0	0	0	1	0	0	0	0	0	0

* **VPL** : Vsync Polarity (0 : High Active, 1 : Low Active)

* **HPL** : Hsync Polarity (0 : High Active, 1 : Low Active)

* **DPL** : Dotclk Polarity (0 : Data fetched at falling edge, 1 : at rising edge)

Note 3) VBP (Vsync Back Porch)

DB15	DB14	DB13	DB12	DB11	DB10	DB9	DB8	DB7	DB6	DB5	DB4	DB3	DB2	DB1	DB0
0	0	0	0	0	0	0	0	VBP7	VBP6	VBP5	VBP4	VBP3	VBP2	VBP1	VBP0

VBP7	VBP6	VBP5	VBP4	VBP3	VBP2	VBP1	VBP0	Number of Raster Periods In the Back Porch
0	0	0	0	0	0	0	0	3
0	0	0	0	0	0	0	1	3
0	0	0	0	0	0	1	0	4
0	0	0	0	0	0	1	1	5
0	0	0	0	0	1	0	0	6
				.				.
				.				.
				.				.
1	1	1	1	1	1	0	0	254
1	1	1	1	1	1	0	1	255
1	1	1	1	1	1	1	0	256
1	1	1	1	1	1	1	1	257

* The porch period should meet the following condition.

$$257H \geq VBP \geq 3H, VBP > VLW$$



Note 4) HBP (Hsync Back Porch)

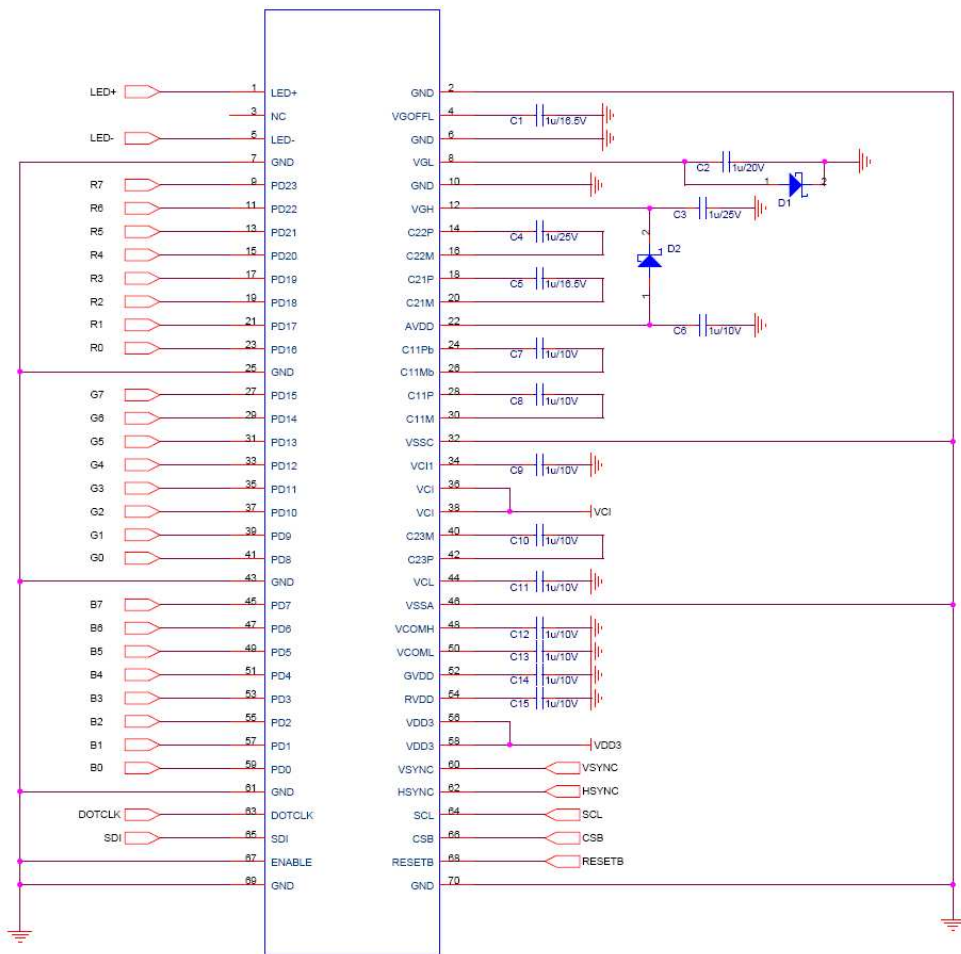
DB15	DB14	DB13	DB12	DB11	DB10	DB9	DB8	DB7	DB6	DB5	DB4	DB3	DB2	DB1	DB0
0	0	0	0	0	0	0	HBP8	HBP7	HBP6	HBP5	HBP4	HBP3	HBP2	HBP1	HBP0

HBP 8	HBP 7	HBP 6	HBP 5	HBP 4	HBP 3	HBP 2	HBP 1	HBP 0	Number of MCLKs In the Back Porch 24 bit (8 bit)
0	0	0	0	0	0	0	0	0	8 (24)
0	0	0	0	0	0	0	0	1	8 (24)
0	0	0	0	0	0	0	1	0	8 (24)
0	0	0	0	0	0	0	1	1	8 (24)
0	0	0	0	0	0	1	0	0	8 (24)
0	0	0	0	0	0	1	0	1	8 (24)
0	0	0	0	0	0	1	1	0	8 (24)
0	0	0	0	0	0	1	1	1	8 (24)
0	0	0	0	0	1	0	0	0	8 (24)
0	0	0	0	0	1	0	0	1	9 (27)
0	0	0	0	0	1	0	1	0	10 (30)
0	0	0	0	0	1	0	1	1	11 (33)
·									
·									
·									
1	1	1	1	1	1	1	0	1	509 (1527)
1	1	1	1	1	1	1	1	0	510 (1530)
1	1	1	1	1	1	1	1	1	511 (1533)

* The porch period should meet the following condition.

511dck ≥ HBP ≥ 24dck , HBP > HLW

10. Application Circuit

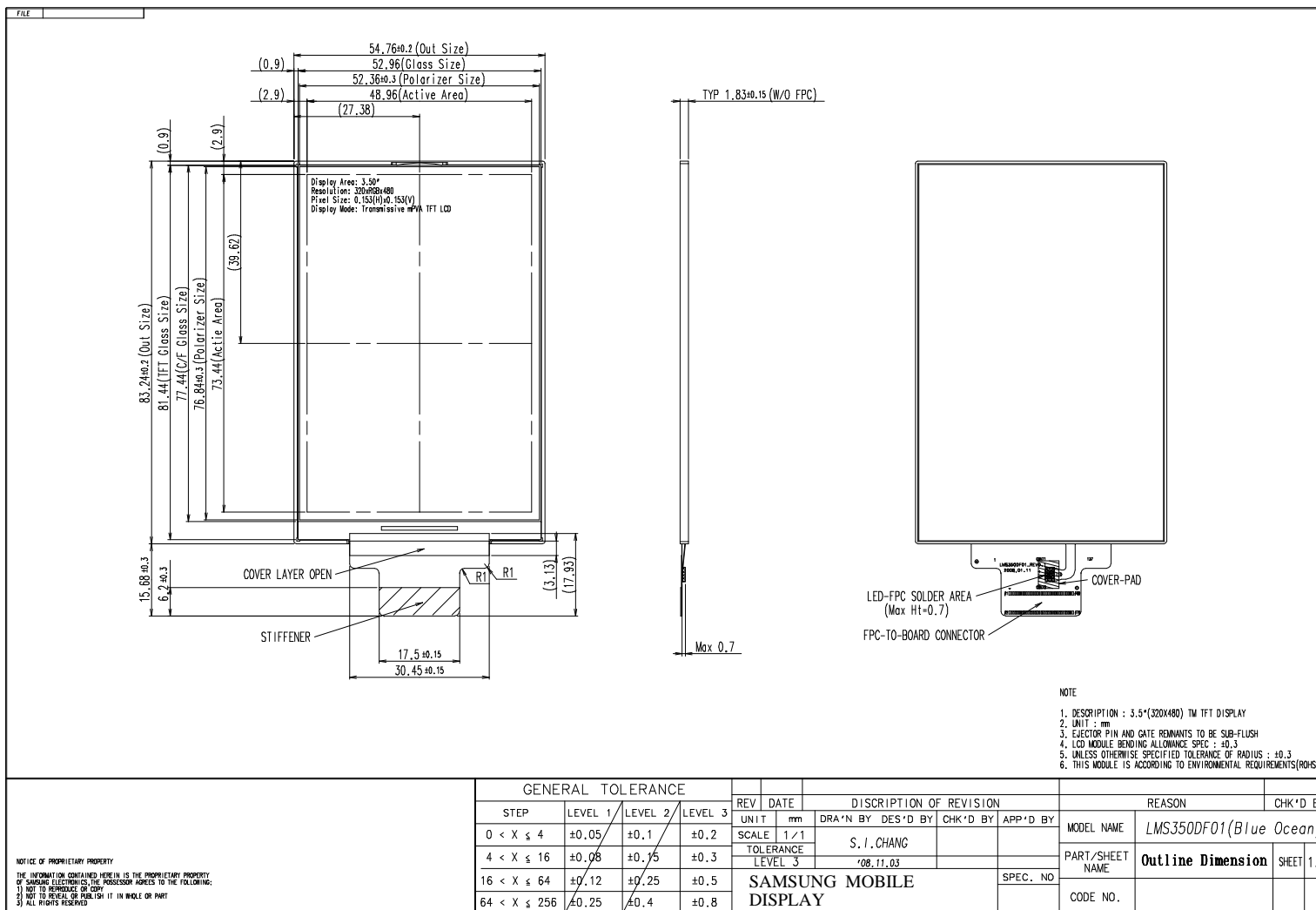


※ Recommends

1. All components would better be close to FPC connector as possible.
2. Schottky diode's low F/V(forward voltage) makes internal circuit more stable.

Name		Device	Value	Maximum Ratings Voltage
C1	VGOFFL	Capacitor	1uF	16.5V
C2	VGL	Capacitor	1uF	20V
C3	VGH	Capacitor	1uF	25V
C4	C22	Capacitor	1uF	25V
C5	C21	Capacitor	1uF	16.5V
C6	AVDD	Capacitor	1uF	10V
C7	C11b	Capacitor	1uF	10V
C8	C11	Capacitor	1uF	10V
C9	VCI1	Capacitor	1uF	10V
C10	C23	Capacitor	1uF	10V
C11	VCL	Capacitor	1uF	10V
C12	VCOMH	Capacitor	1uF	10V
C13	VCOML	Capacitor	1uF	10V
C14	GVDD	Capacitor	1uF	10V
C15	RVDD	Capacitor	1uF	10V
D1	VGL	Diode		$V_f \leq 0.28V$ (@IF =20mA, Ta = 25°C)
D2	VGH	Diode		$V_R \geq \text{max.}25V$

11. Module outline Dimension



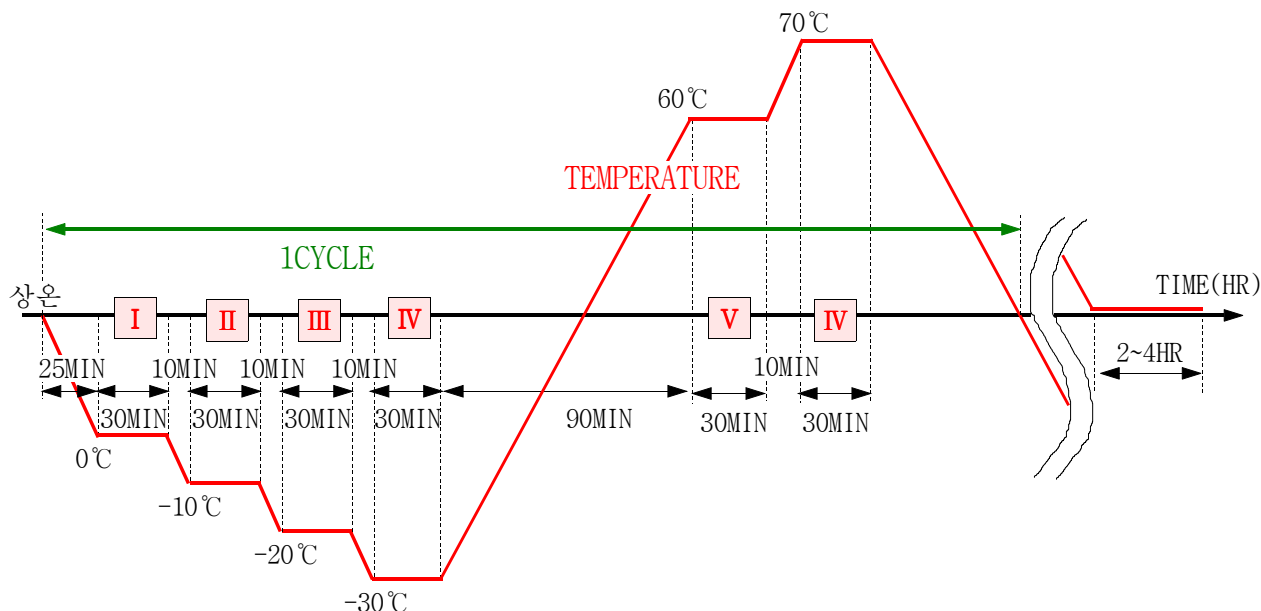
Samsung Confidential

12. Reliability Test Result

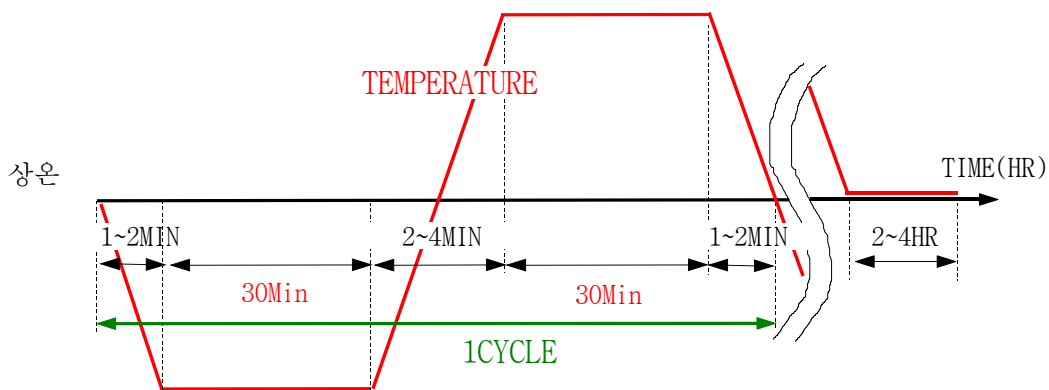
12.1 Condition

ITEM	CONDITION	Sample Size	Test Result	REMARK
High Temperature Operating Life-test	60°C, 160HR	10ea	Pass	
Low Temperature Operating Life-test	-20°C, 160HR	5ea	Pass	
Temperature Humidity Bias test	60°C 90%RH, 160HR	10ea	Pass	
Temperature Cycle ON/OFF test	-30°C ⇔ 70°C ON/OFF, 5CY	10ea	Pass	Note(1)
High Temperature Storage test	85°C, 160HR	5ea	Pass	
Low Temperature Storage test	-40°C, 160HR	5ea	Pass	
Thermal Shock test	-40°C ⇔ 85°C, 30CY	10ea	Pass	Note(2)
Electro-Static Discharge test	CONTACT: ±4 kV, 150pF/330Ω A I R: ±8 kV, 150pF/330Ω	5ea 5ea	Pass	Note(3)
Box Vibration test	RANDOM 1HR/Yaxis, 1.5G, 10~200Hz (MEDIUM BOX)	1box	Pass	
Box Drop test	1 Corner 3 Edges 6 faces, 66cm (MEDIUM BOX)	1box	Pass	

Note (1) ON Time over 10 seconds, OFF Time under 10 seconds



Note (2) Storage

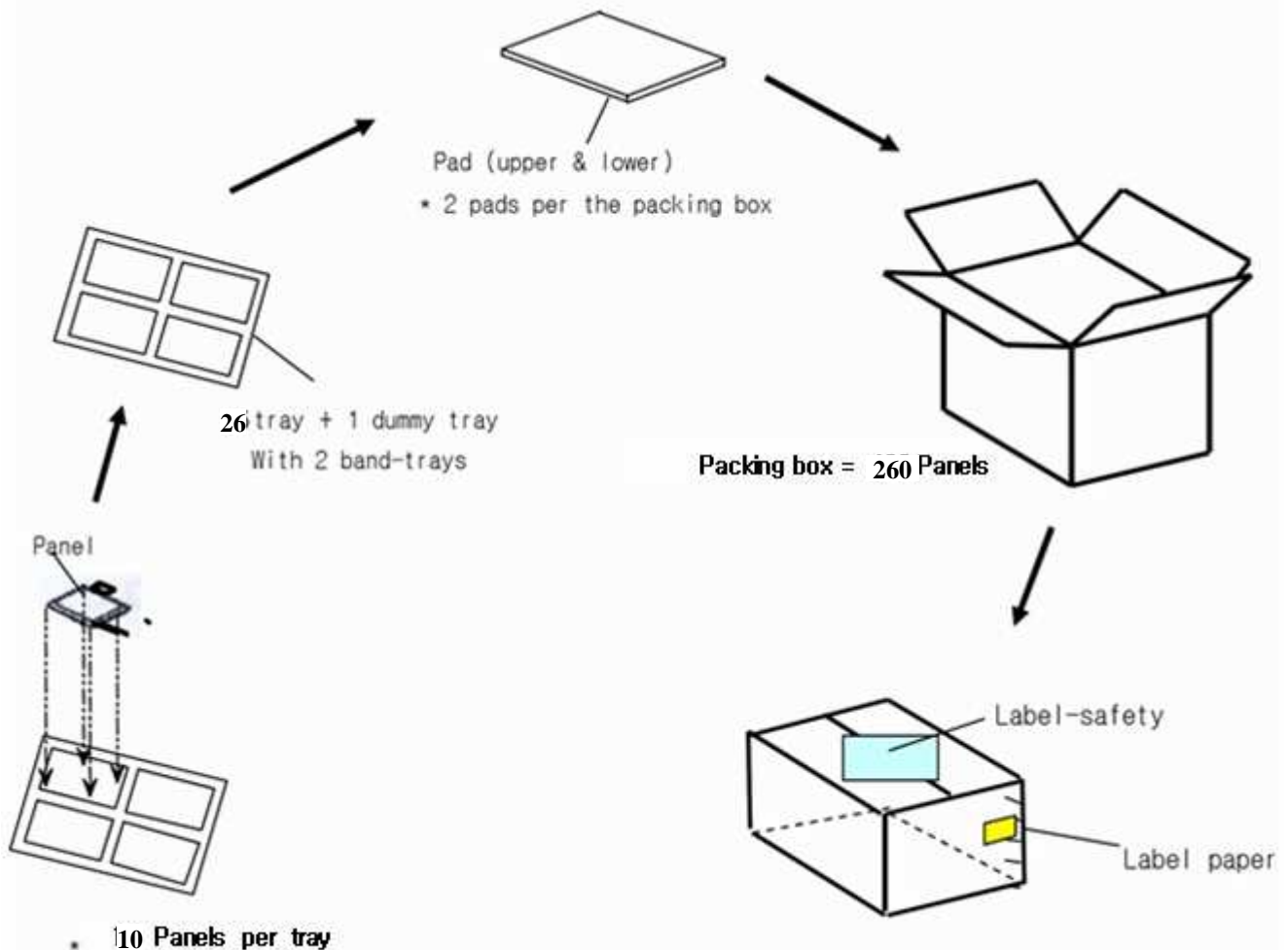


Note (3) Main LCD, 5 times to every 4 corners of active area

12.2 Judgement

- Main LCD should work under the normal condition
- After the temperature and humidity test, the luminance and CR(Contrast Ratio) should not be changed over 50% compared with those before the test.

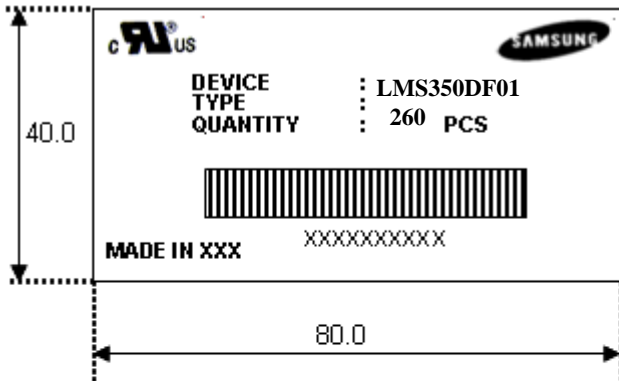
13. Packing



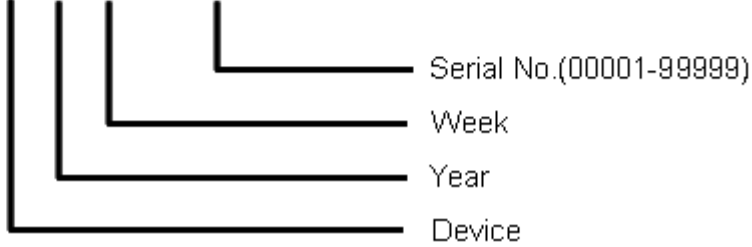
- Note**
- (1) Packing Box Weight : Approx. 9.1 Kg
 - (2) Packing Box Size : 505(W) x 355(D) x 208(H)
 - (3) Place the panels in the tray facing the direction shown in the figure.
 - (4) Place 25 tray and 1 cover tray and 2 pads inside the packing-box
 - (5) Affix the label-safety, label-paper.

14. Marking & Others

(1) Packing case attach



X X X X X X X X X X



15. General Precautions

15.1 Handling

- (a) When the module is assembled, it should be attached to the system firmly. Be careful not to twist and bend the module.
- (b) Refrain from strong mechanical shock and / or any force to the module. In addition to damage, this may cause improper operation or damage to the module and back-light unit.
- (c) Note that polarizers are very fragile and could be easily damaged. Do not press or scratch the surface harder than a HB pencil lead.
- (d) Wipe off water droplets or oil immediately. If you leave the droplets for a long time, Staining and discoloration may occur.
- (e) If the surface of the polarizer is dirty, clean it using some absorbent cotton or soft cloth.
- (f) The desirable cleaners are water, IPA(Isopropyl Alcohol) or Hexane. Do not use Ketone type materials(ex. Acetone), Ethyl alcohol, Toluene, Ethyl acid or Methyl chloride. It might permanent damage to the polarizer due to chemical reaction.
- (g) If the liquid crystal material leaks from the panel, it should be kept away from the eyes or mouth. In case of contact with hands, legs or clothes, it must be washed away thoroughly with soap.
- (h) Protect the module from static, it may cause damage to the Integrated Gate Circuit.
- (i) Use finger-stalls with soft gloves in order to keep display clean during the incoming inspection and assembly process.
- (j) Do not disassemble the module.
- (k) Protection film for polarizer on the module shall be slowly peeled off just before use so that the electrostatic charge can be minimized.
- (l) Pins of I/F connector shall not be touched directly with bare hands

15.2 Storage

- (a) Do not leave the panel in high temperature, and high humidity for a long time. It is highly recommended to store the module with temperature from 0 to 35°C and relative humidity of less than 70%.
- (b) Do not store the TFT-LCD module in direct sunlight.
- (c) The module shall be stored in a dark place. It is prohibited to apply sunlight or fluorescent light during the store.

14.3 Operation

- (a) Do not connect, disconnect the module in the "Power On" condition.
- (b) Power supply should always be turned on/off by the "Power on/off sequence"

14.4 Others

- (a) The Liquid crystal is deteriorated by ultraviolet, do not leave it in direct sunlight and strong ultraviolet ray for many hours.
- (b) Avoid condensation of water. It may result in improper operation or disconnection of electrode.
- (c) Do not exceed the absolute maximum rating value. (the supply voltage variation, input voltage variation, variation in part contents and environmental temperature, and so on) Otherwise the panel may be damaged.
- (d) If the panel displays the same pattern continuously for a long period of time, it can be the situation when the image "Sticks" to the screen.
- (e) This panel has its circuitry FPC on the bottom side and should be handled carefully in order not to be stressed.