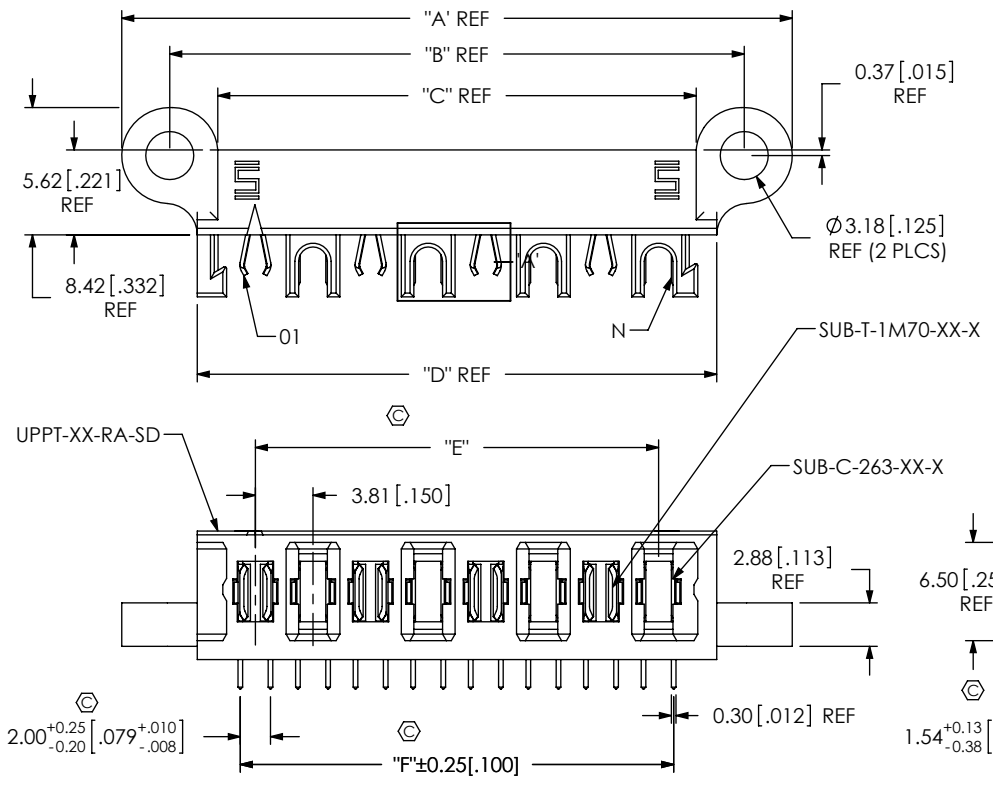


DO NOT SCALE FROM THIS PRINT

DESIGNED & DIMENSIONED IN MILLIMETERS [INCHES]



UPPT-XX-01-XX-X-RA-XX-XX

No OF POSITIONS
-02, -04, -06, -08

PACKAGING
-TR: TAPE & REEL (SEE NOTE 7)

OPTION
-SD: SCREW DOWN
-LC: LOCKING CLIP

LEAD STYLE
-01

RIGHT ANGLE

TAIL LENGTH
-01: FOR 1.57 [.062] THICK PCB (USE SUB-T-1M70-01-X AND SUB-C-263-01-X)
-02: FOR 2.36 [.093] THICK PCB (USE SUB-T-1M70-02-X AND SUB-C263-02-X)

PLATING SPECIFICATION
-L: (SEE TABLE 3)
-T: (SEE TABLE 3)

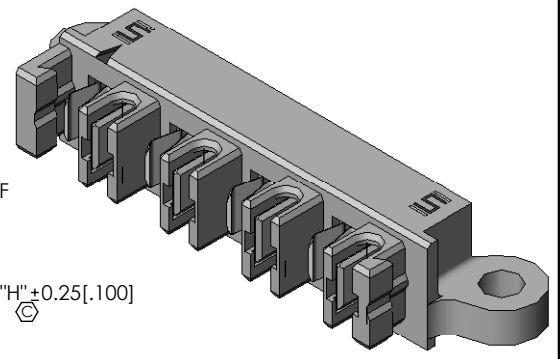


FIG. 1 (UPPT-08-01-01-X-RA-SD SHOWN)

| TAIL LENGTH | "H" | SUB-T-1M70-XX-X | SUB-C-263-XX-X |
|-------------|--------------|-----------------|----------------|
| -01 | 2.82 [0.111] | SUB-T-1M70-01-X | SUB-C-263-01-X |
| -02 | 3.58 [0.141] | SUB-T-1M70-02-X | SUB-C-263-02-X |

| No. OF POS | "A" | "B" | "C" | "D" | "E" | "F" | "G" |
|------------|---------------|---------------|---------------|---------------|---------------|---------------|---------------|
| -02 | 21.49 [0.846] | 15.14 [0.596] | 8.79 [0.346] | 11.50 [0.453] | 3.81 [0.150] | 5.81 [0.229] | 9.50 [0.374] |
| -04 | 29.11 [1.146] | 22.76 [0.896] | 16.41 [0.646] | 19.12 [0.753] | 11.43 [0.450] | 13.43 [0.529] | 17.12 [0.674] |
| -06 | 36.73 [1.446] | 30.38 [1.196] | 24.03 [0.946] | 26.74 [1.053] | 19.05 [0.750] | 21.05 [0.829] | 24.74 [0.974] |
| -08 | 44.35 [1.746] | 38.00 [1.496] | 31.65 [1.246] | 34.36 [1.353] | 26.67 [1.050] | 28.67 [1.129] | 32.36 [1.274] |

NOTES:

1. Ⓢ REPRESENTS A CRITICAL DIMENSION.
2. BURR ALLOWANCE: 0.038 [.0015] MAX.
3. MINIMUM PUSHOUT FORCE: 4.45N [1.000 LB].
4. MAXIMUM ALLOWABLE BOW: 0.05 [.002] MM/MM AFTER ASSEMBLY.
5. POSITION 1 WILL MATE TO POSITION N ON MATING CONNECTOR.
6. RECOMMENDED TORQUE ON HOLD DOWN SCREWS TO BE 20 IN-OZ ± 5 IN-OZ.
7. PARTS TO BE PACKAGED IN TUBES UNLESS OTHERWISE STATED.

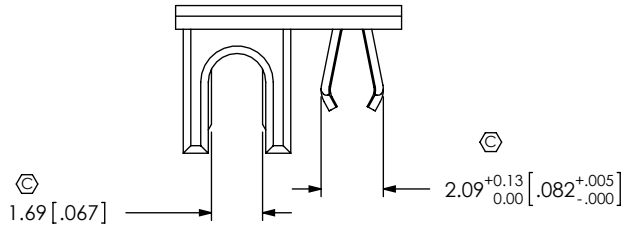
UNLESS OTHERWISE SPECIFIED, DIMENSIONS ARE IN MILLIMETERS. TOLERANCES ARE:
DECIMALS ANGLES
X.X: ±0.3 [.01] 2°
X.XX: ±0.13 [.005]
X.XXX: ±0.051 [.0020]

PROPRIETARY NOTE
THIS DOCUMENT CONTAINS INFORMATION CONFIDENTIAL AND PROPRIETARY TO SAMTEC, INC. AND SHALL NOT BE REPRODUCED OR TRANSFERRED TO OTHER DOCUMENTS OR DISCLOSED TO OTHERS OR USED FOR ANY PURPOSE OTHER THAN THAT WHICH IT WAS OBTAINED WITHOUT THE EXPRESSED WRITTEN CONSENT OF SAMTEC, INC.

samtec
520 PARK EAST BLVD, NEW ALBANY, IN 47150
PHONE: 812-944-6733 FAX: 812-948-5047
e-Mail: info@SAMTEC.com code 55322

MATERIAL: DO NOT SCALE DRAWING SHEET SCALE: 2:1
INSULATOR: LCP
CONTACT AND TERMINAL: BeCu
MAX FLASH ALLOWED: 0.08 [.003]
MAX GATE VESTIGE: 0.08 [.003]
F:\DWG\MISC\MKTG\UPPT-XX-01-XX-X-RA-XX-XX-MKT.SLDDRW

DESCRIPTION: Micro Power Hermi Connector
DWG. NO. UPPT-XX-01-XX-X-RA-XX-XX
BY: B HARPENAU 09/11/2009 SHEET 1 OF 2



DETAIL 'A'
SCALE 4:1

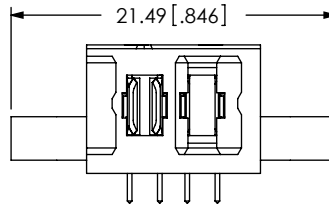


FIG. 3
(UPPT-02-01-01-X-RA-SD SHOWN)

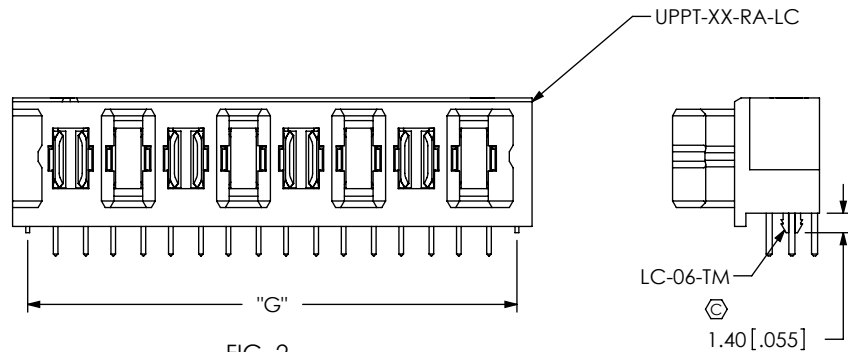
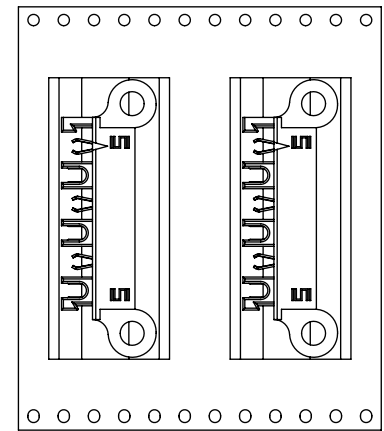
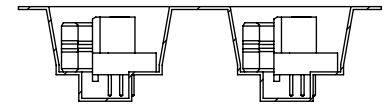


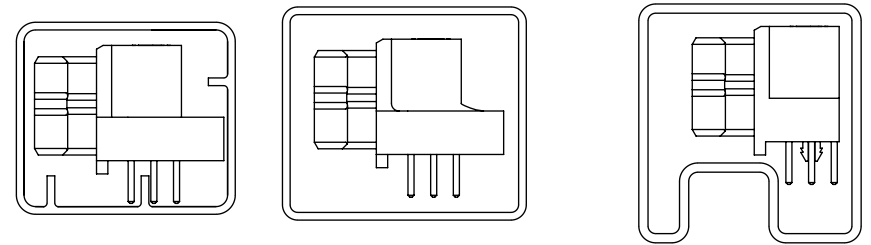
FIG. 2
(UPPT-08-01-01-X-RA-LC SHOWN)



USER DIRECTION OF UN-REELING
POCKET NOT DETAILED



B PACKAGING VIEW
-TR OPTION



| TUBE TABLE | | | |
|-------------|--------|----------------|-------|
| TAIL LENGTH | OPTION | TUBE | PLUG |
| B -02 | -SD | PT-1-24-01-112 | TP-07 |
| B ALL | -LC | PT-1-24-01-40 | TP-13 |
| B -01 | -SD | PT-1-24-02-106 | TP-07 |

PACKAGING TUBE VIEW

| TABLE 3 | | |
|---------|------------------------|----------------|
| Plating | POWER PIN CONTACT AREA | POWER PIN TAIL |
| -L | LIGHT GOLD | MATTE TIN |
| -T | MATTE TIN | MATTE TIN |

PROPRIETARY NOTE
THIS DOCUMENT CONTAINS INFORMATION
CONFIDENTIAL AND PROPRIETARY TO
SAMTEC, INC. AND SHALL NOT BE REPRODUCED
OR TRANSFERRED TO OTHER DOCUMENTS OR
DISCLOSED TO OTHERS OR USED FOR ANY
PURPOSE OTHER THAN THAT WHICH IT WAS
OBTAINED WITHOUT THE EXPRESSED WRITTEN
CONSENT OF SAMTEC, INC.

DO NOT SCALE DRAWING

SHEET SCALE: 2:1

samtec

520 PARK EAST BLVD, NEW ALBANY, IN 47150
PHONE: 812-944-6733 FAX: 812-948-5047
e-Mail: info@SAMTEC.com code 55322

DESCRIPTION:
Micro Power Hermi Connector

DWG. NO.
UPPT-XX-01-XX-X-RA-XX-XX

BY: B HARPEAU 09/11/2009 SHEET 2 OF 2