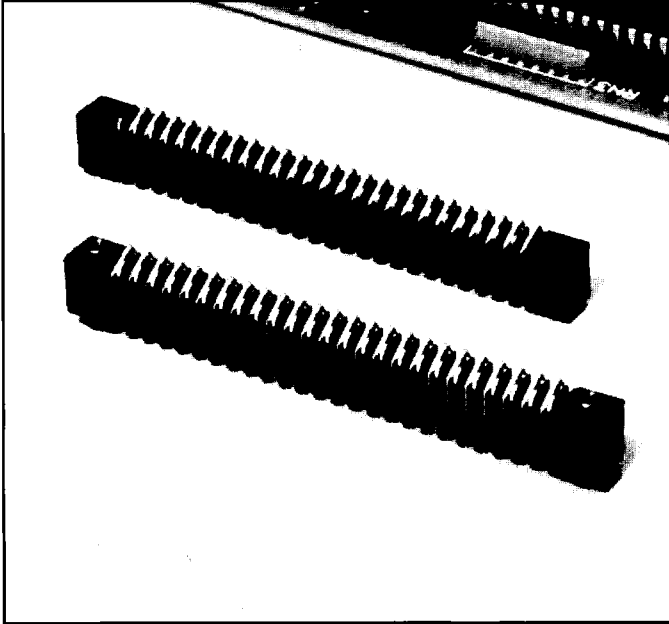


Series 501 & 503 (Surface Mount)

.050 (1.27) Centers
Surface Mate
Surface Compression



PART NUMBER CODING 50X-X 1-XXSM-00-XXX

CONTACT PLATING
CONTACT SURFACE
103 = .000030 GOLD
105 = .000050 GOLD
41 = TIN PLATING
ALL GOLD OVER .000050 NICKEL
FOR OTHER PLATING CONSULT
FACTORY
STD. MOUNTING STYLE/HARDWARE
SEE MOUNTING STYLE TABLE
TERMINATION STYLE
SM = SURFACE MOUNT
NUMBER OF CONTACTS
SINGLE ROW .100 (2.54) CENTERS
15 (CONSULT FACTORY FOR
AVAILABILITY)
21 STANDARD
25 STANDARD
DUAL ROW .050 (1.27) CENTERS
30 (CONSULT FACTORY FOR
AVAILABILITY)
42 STANDARD
50 STANDARD
INSULATOR MATERIAL
1 = POLYESTER, BLACK
NUMBER OF ROWS
1 = 1 ROW (.100 CENTERS)
2 = 2 ROWS (.050 CENTERS)
SURFACE MATE (SURFACE MOUNT)
501 = .325 HIGH INSULATOR
503 = .538 HIGH INSULATOR
(CONSULT FACTORY FOR AVAILABILITY
OF ADDITIONAL INSULATOR HEIGHTS)

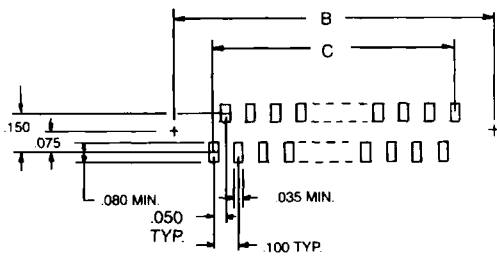
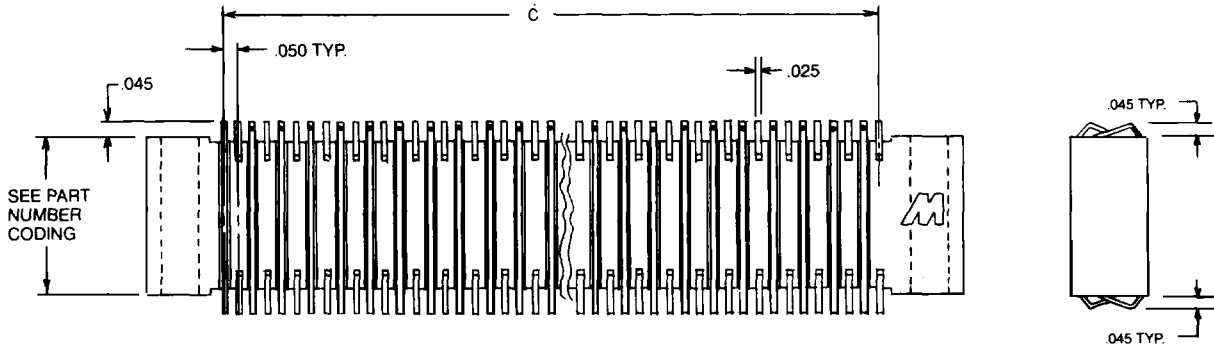
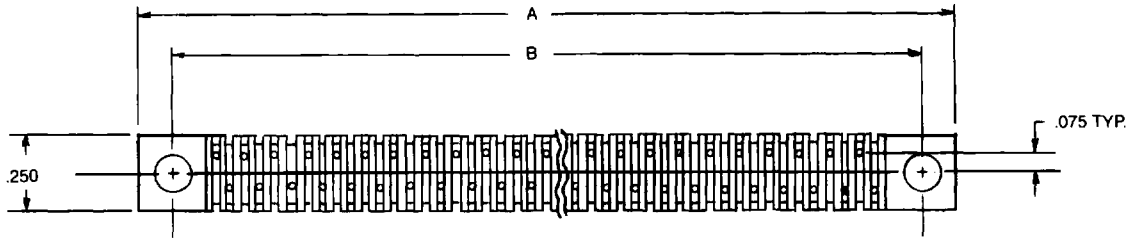
Features

- Combines board standoff function with parallel board interconnect function
- Connects two or more stacked/surface mount boards
- Optional polarizing mounting hardware is available (threaded and thru-hole)
- Various contact platings are available
- Optional board stiffeners are recommended in some applications (see back cover)

Specifications

Operating Voltage: 250 VDC RMS at 60 Hz at sea level
Current Rating: 2.0 amps continuous
Contact Resistance: 25 milliohms maximum
Contact Material: Copper alloy
Contact Plating: See part number coding
Insulator Material: Polyester, glass filled 94 V-0 rated per MIL-M-29519, black

J



RECOMMENDED PAD LAYOUT

50	3.000	2.750	2.450
42	2.600	2.350	2.050
30	2.000	1.750	1.450
SIZE	A	B	C
DIMENSIONS			