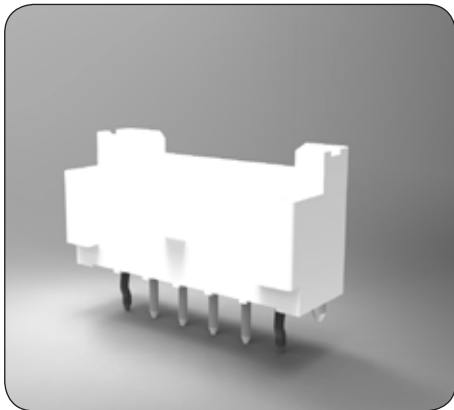


EP 2.5 6-Posn Receptacle Housing with Latch and Tabs, part number 2110992-6



EP 2.5 6-Posn Vertical Shrouded Header, part number 2132230-6

Introducing EP 2.5 Connector Series

Economy Power 2.5 (EP 2.5) is a new type of single-row crimp connector system. EP 2.5 comprises of new plug housings, contacts, and headers, based on a .100" centerline (2.5 mm pitch), which makes it a very compact solution.

As good handling properties are essential for such a compact connector to achieve a correct and reliable interconnection during assembly, EP 2.5 housings and contacts (terminals) were designed to help the workers on the shop floor with their manual tasks. The low-insertion force terminals, for instance, have an asymmetrically shape which means that they can only be loaded in the housing's cavity in the correct way. This type of tactile feedback works even under adverse shop-floor conditions with noise and distraction.

EP 2.5 connector halves are available with 2 to 20 positions. This high number can be utilized to integrate up to 20 discrete wires with 26 to 22 AWG size into a single PC board section of roughly two inches length. As board space is increasingly often at a premium, the EP 2.5 interconnection system offers ideal conditions for contacting densely packed small boards. EP 2.5 connectors are intermateable with similar products in the market to facilitate simple retrofitting.

ELECTRICAL

- Voltage rating: 250 VAC
- Current rating: 3 A

MECHANICAL

- Positions: 2 to 20 (single row)
- Wire size: 26 to 22 AWG discrete wire
- Centerline: .100" (2.5 mm)
- Operating temperature: -55 to 105 °C

MATERIALS

- Housings: UL 94V-0 rated nylon
- Contacts: Tin-plated Phos Bronze
- Color housings available upon request

STANDARDS

- UL recognized

KEY FEATURES

- .100" centerline (2.5 mm)
- 2 - 20 positions for discrete wires AWG 26-22
- Voltage up to 250 VAC
- Current up to 3 A
- Housing locking latch
- Polarization tabs
- Asymmetrical terminals can only be loaded one way
- Low insertion force terminals
- Contact lubrication

APPLICATIONS

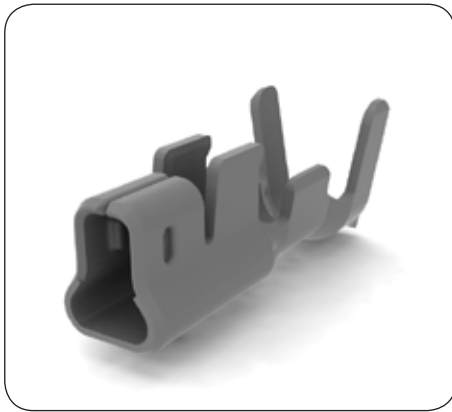
- Household appliances
- HVAC
- Industrial machinery (e.g. control boards)

SPECIFICATIONS

- Product specification: 108-2418

SAMPLES NOW AVAILABLE





EP 2.5 Phos Bronze Pre-Tin Contact 22-26 AWG, part number 2110989-1

CONTACT AND HOUSINGS

Part number	Description
2110989-1	EP 2.5 Phos Bronze Pre-Tin Contact 22-26 AWG
2110992-2	EP 2.5 2-Posn Receptacle Housing w/Latch and Tabs
2110992-3	EP 2.5 3-Posn Receptacle Housing w/Latch and Tabs
2110992-4	EP 2.5 4-Posn Receptacle Housing w/Latch and Tabs
2110992-5	EP 2.5 5-Posn Receptacle Housing w/Latch and Tabs
2110992-6	EP 2.5 6-Posn Receptacle Housing w/Latch and Tabs
2110992-7	EP 2.5 7-Posn Receptacle Housing w/Latch and Tabs
2110992-8	EP 2.5 8-Posn Receptacle Housing w/Latch and Tabs
2110992-9	EP 2.5 9-Posn Receptacle Housing w/Latch and Tabs
1-2110992-0	EP 2.5 10-Posn Receptacle Housing w/Latch and Tabs
1-2110992-1	EP 2.5 11-Posn Receptacle Housing w/Latch and Tabs
1-2110992-2	EP 2.5 12-Posn Receptacle Housing w/Latch and Tabs
1-2110992-3	EP 2.5 13-Posn Receptacle Housing w/Latch and Tabs
1-2110992-4	EP 2.5 14-Posn Receptacle Housing w/Latch and Tabs
1-2110992-5	EP 2.5 15-Posn Receptacle Housing w/Latch and Tabs
1-2110992-6	EP 2.5 16-Posn Receptacle Housing w/Latch and Tabs
1-2110992-7	EP 2.5 17-Posn Receptacle Housing w/Latch and Tabs
1-2110992-8	EP 2.5 18-Posn Receptacle Housing w/Latch and Tabs
1-2110992-9	EP 2.5 19-Posn Receptacle Housing w/Latch and Tabs
2-2110992-0	EP 2.5 20-Posn Receptacle Housing w/Latch and Tabs

APPLICATION TOOLING

Part number	Description
1530232-[]	HDI Quick Change Miniature Applicator
1725950-[]	AMP 3K Press
1725900-[]	AMP 5K Press
354500-[]	AMP-O-LEKTRIC Model "G" Terminating Machine
528324-[]	Komax Gamma 333 PC

PRODUCT OFFERING HEADERS WITH BOSS*

Part number	Description
2132230-2	EP 2.5 Vertical Shrouded Header 2-Posn w/Boss
2132230-3	EP 2.5 Vertical Shrouded Header 3-Posn w/Boss
2132230-4	EP 2.5 Vertical Shrouded Header 4-Posn w/Boss
2132230-5	EP 2.5 Vertical Shrouded Header 5-Posn w/Boss
2132230-6	EP 2.5 Vertical Shrouded Header 6-Posn w/Boss
2132230-7	EP 2.5 Vertical Shrouded Header 7-Posn w/Boss
2132230-8	EP 2.5 Vertical Shrouded Header 8-Posn w/Boss
2132230-9	EP 2.5 Vertical Shrouded Header 9-Posn w/Boss
1-2132230-0	EP 2.5 Vertical Shrouded Header 10-Posn w/Boss
1-2132230-1	EP 2.5 Vertical Shrouded Header 11-Posn w/Boss
1-2132230-2	EP 2.5 Vertical Shrouded Header 12-Posn w/Boss
1-2132230-3	EP 2.5 Vertical Shrouded Header 13-Posn w/Boss
1-2132230-4	EP 2.5 Vertical Shrouded Header 14-Posn w/Boss
1-2132230-5	EP 2.5 Vertical Shrouded Header 15-Posn w/Boss
1-2132230-6	EP 2.5 Vertical Shrouded Header 16-Posn w/Boss
1-2132230-7	EP 2.5 Vertical Shrouded Header 17-Posn w/Boss
1-2132230-8	EP 2.5 Vertical Shrouded Header 18-Posn w/Boss
1-2132230-9	EP 2.5 Vertical Shrouded Header 19-Posn w/Boss
2-2132230-0	EP 2.5 Vertical Shrouded Header 20-Posn w/Boss

*Product headers without boss also available

While TE has made every reasonable effort to ensure the accuracy of the information in this flyer, TE does not guarantee that it is error-free, nor does TE make any other representation, warranty or guarantee that the information is accurate, correct, reliable or current. TE reserves the right to make any adjustments to the information contained herein at any time without notice. TE expressly disclaims all implied warranties regarding the information contained herein, including, but not limited to, any implied warranties of merchantability or fitness for a particular purpose. The dimensions in this flyer are for reference purposes only and are subject to change without notice. Specifications are subject to change without notice. Consult TE for the latest dimensions and design specifications.

