

# 4000/3000 Series LED Indicator

## Special Features

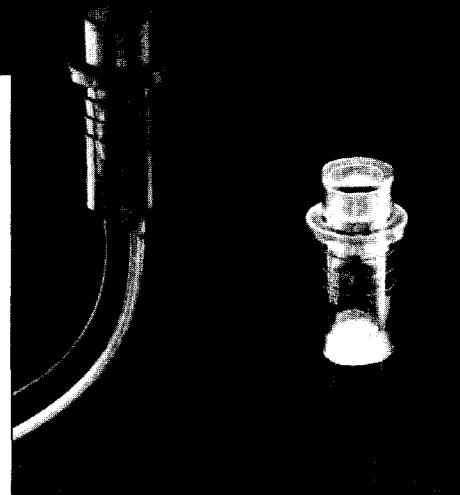
- Ultra-miniature size
- One piece body and lens construction—available in red, green, blue, amber and clear butyrate plastic
- Front mounting ribbed body “snaps into” panel—no mounting hardware required
- Available in smooth body for thinner panel application; mounts with tinnerman nut
- Solid state reliability
- Sealed against moisture and dust—water resistant
- Optional internal resistor

## Specifications

- Mounting hole: .187" (4.75)
- Termination: 26 AWG 4" red (anode) and black (cathode) leads stripped to 1/4" standard; Custom lead lengths and colors available
- Optional bi-pin available
- DC Voltage range 2 volts to 28 volts at 10 mA (utilizing internal resistor)

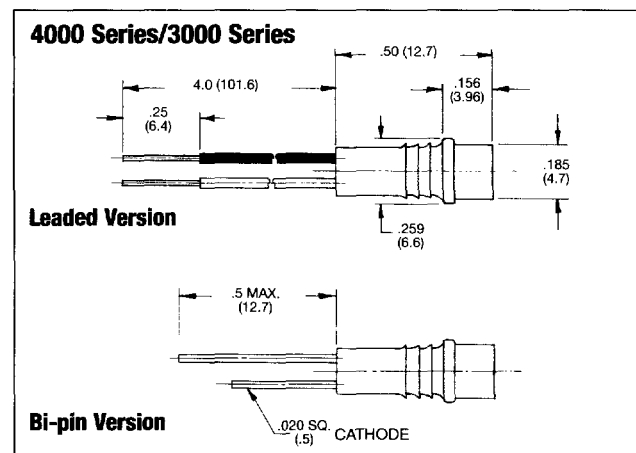
## Electrical and Optical Characteristics (T<sub>A</sub>=25°C)

LED Part#	Color	Luminous Intensity (mcd) Typ. @ I <sub>F</sub> (mA)		V <sub>F</sub> Typ. @ I <sub>F</sub> (mA)		Viewing Angle 2Θ 1/2	Peak Wavelength (mm)	More LED Data Page#
<b>HIGH EFFICIENCY</b>								
1300	Yellow	6.0	10	2.0	10	60°	583	21
1301	Red	5.5	10	1.9	10	60°	635	21
1302	Green	5.0	10	2.1	10	60°	565	21
1313	Orange	5.5	10	1.9	10	60°	600	21
<b>LOW CURRENT</b>								
1303	Red	2.1	2	1.8	2	50°	635	22
1304	Yellow	1.6	2	1.9	2	50°	583	22
1305	Green	2.1	2	1.8	2	50°	565	22
<b>BLUE</b>								
8310	Blue	25.0	20	4.5	20	60°	430	30
8311	Blue	55.0	20	4.5	20	20°	430	30
<b>BICOLOR</b>								
8901	Red	20.0	20	2.0	20	60°	625	27
	Green	20.0	20	2.2	20		565	
8903	Yellow	10.0	20	2.1	20	60°	590	27
	Green	20.0	20	2.2	20		565	
<b>ULTRA BRIGHT</b>								
1310	Red	45.0	20	1.9	20	45°	635	21
1311	Yellow	45.0	20	2.1	20	45°	583	21
1312	Green	45.0	20	2.2	20	45°	565	21
1315	Red	45.0	20	1.8	20	60°	645	21
<b>SUPER ULTRA BRIGHT</b>								
8306	Green	200.0	20	2.2	20	50°	565	29
8312	Yellow	700.0	20	2.0	20	50°	595	29
8313	Red	800.0	20	1.85	20	50°	660	29



3mm Panel Mount LED Assemblies

## Package Dimensions

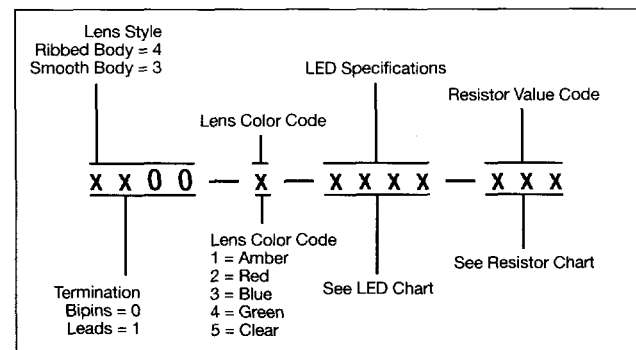


All Dimensions are in inches (mm)

## Resistor Chart

OPERATING SPECIFICATIONS			
Resistor Value Code	Voltage	Current (mA)	Internal Resistor (Ohms)
001	2	10 or 20	none
002	5	10	330
003	6	10	390
004	10	10	820
005	12	10	1000
006	15	10	1300
007	28	5	5100
014	2	2	none

## How To Order



WILBRECHT  
ELECTRONICS, INC.

LED  
DIVISION