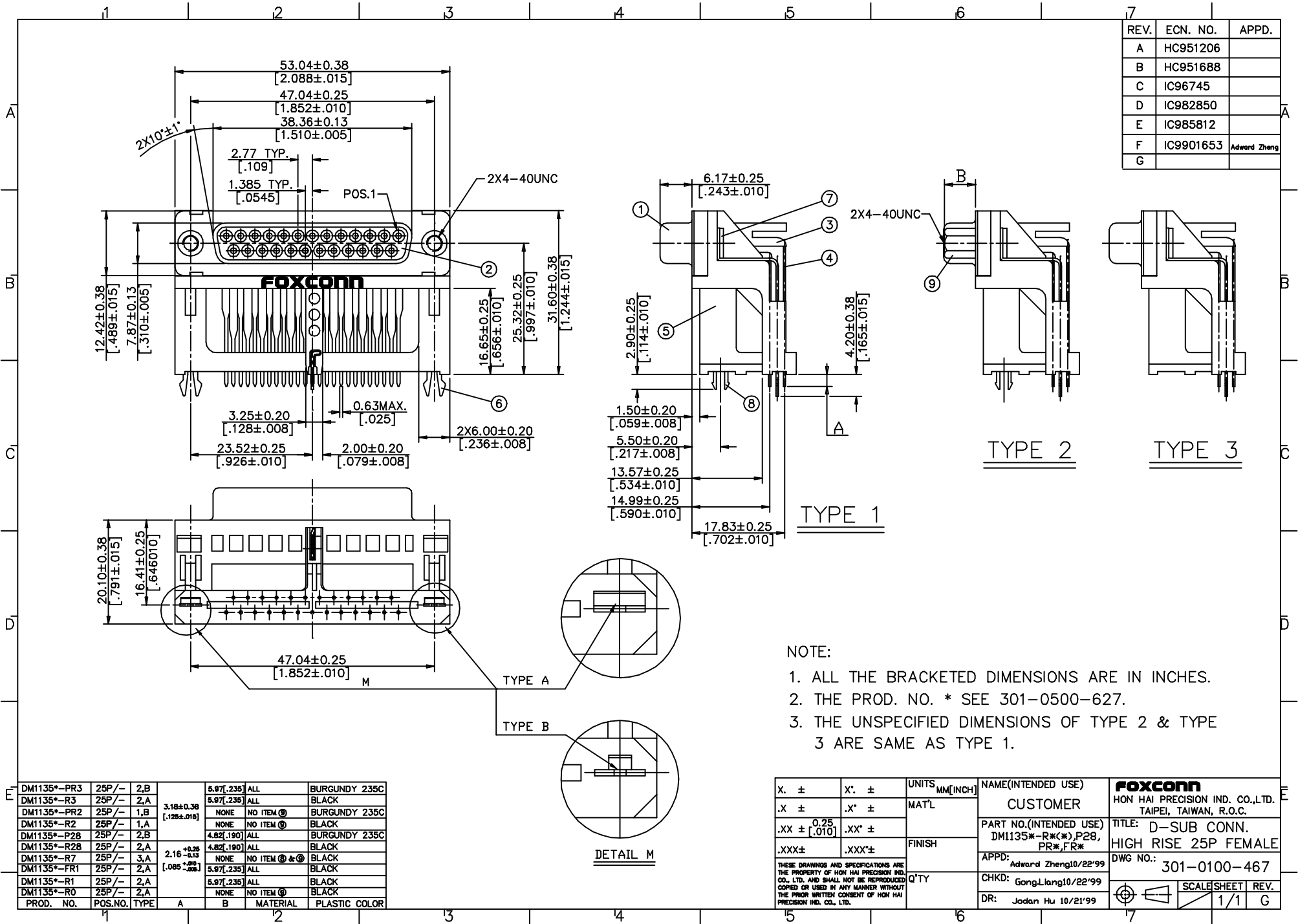


REV.	ECN. NO.	APPD.
A	HC951206	
B	HC951688	
C	IC96745	
D	IC982850	
E	IC985812	
F	IC9901653	Adward Zheng
G		

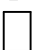


NOTE:
 1. ALL THE BRACKETED DIMENSIONS ARE IN INCHES.
 2. THE PROD. NO. * SEE 301-0500-627.
 3. THE UNSPECIFIED DIMENSIONS OF TYPE 2 & TYPE 3 ARE SAME AS TYPE 1.

DM1135*-PR3	25P/-	2,B	5.97[.235]	ALL	BURGUNDY 235C	
DM1135*-R3	25P/-	2,A	5.97[.235]	ALL	BLACK	
DM1135*-PR2	25P/-	1,B	NONE	NO ITEM ②	BURGUNDY 235C	
DM1135*-R2	25P/-	1,A	NONE	NO ITEM ②	BLACK	
DM1135*-P28	25P/-	2,B	4.82[.190]	ALL	BURGUNDY 235C	
DM1135*-R28	25P/-	2,A	4.82[.190]	ALL	BLACK	
DM1135*-R7	25P/-	3,A	NONE	NO ITEM ② & ③	BLACK	
DM1135*-FR1	25P/-	2,A	5.97[.235]	ALL	BLACK	
DM1135*-R1	25P/-	2,A	5.97[.235]	ALL	BLACK	
DM1135*-R0	25P/-	2,A	NONE	NO ITEM ②	BLACK	
PROD. NO.	POS.NO.	TYPE	A	B	MATERIAL	PLASTIC COLOR

X. ±	X'. ±	UNITS	NAME(INTENDED USE)	FOXCONN
.X ±	.X' ±	MAT'L	CUSTOMER	HON HAI PRECISION IND. CO.,LTD. TAIPEI, TAIWAN, R.O.C.
.XX ± [0.25 [.010]	.XX' ±	FINISH	PART NO.(INTENDED USE) DM1135*-R*(*)P28, PR*,FR*	TITLE: D-SUB CONN. HIGH RISE 25P FEMALE
.XXX ±	.XXX' ±	Q'TY	APPD: Adward Zheng/22'99	DWG NO.: 301-0100-467
THESE DRAWINGS AND SPECIFICATIONS ARE THE PROPERTY OF HON HAI PRECISION IND. CO., LTD. AND SHALL NOT BE REPRODUCED COPIED OR USED IN ANY MANNER WITHOUT THE PRIOR WRITTEN CONSENT OF HON HAI PRECISION IND. CO., LTD.			CHKD: Gang.Liang/22'99	SCALE SHEET REV. 1/1 G
			DR: Jordan Hu 10/21'99	

ITEM	DESC.	Q'TY	MATERIAL	TREATMENT	REMARK
1.	METAL SHELL - FEMALE	1	STEEL	NI PLATED 100u" MIN.	
2.	INSULATOR - FEMALE (FRONT)	1	THERMOPLASTIC PCT UL 94V-0	MOLDED BLACK	
3.	INSULATOR - FEMALE (REAR)	1	THERMOPLASTIC PCT UL 94V-0	MOLDED BLACK	
4.	CONTACT-FEMALE	25	PHOSPHOR BRONZE	GOLD PLATING AT CONTACT AREA, 100-200u" TIN/LEAD AT TAIL, OVER 50u" NICKEL OVERALL.	
5.	BRACKET	1	THERMOPLASTIC PCT UL 94V-0	MOLDED BLACK	
6.	GROUNDING BOARD LOCK	2	BRASS	TIN PLATED	
7.	CLINCH NUT	2	ZINC ALLOY	ZINC PLATED	
8.	BOARD LOCK-FRONT	1	PHOSPHOR BRONZE	TIN PLATED	3
9.	FEMALE SCREWLOCK	2	BRASS	NICKEL PLATED	2

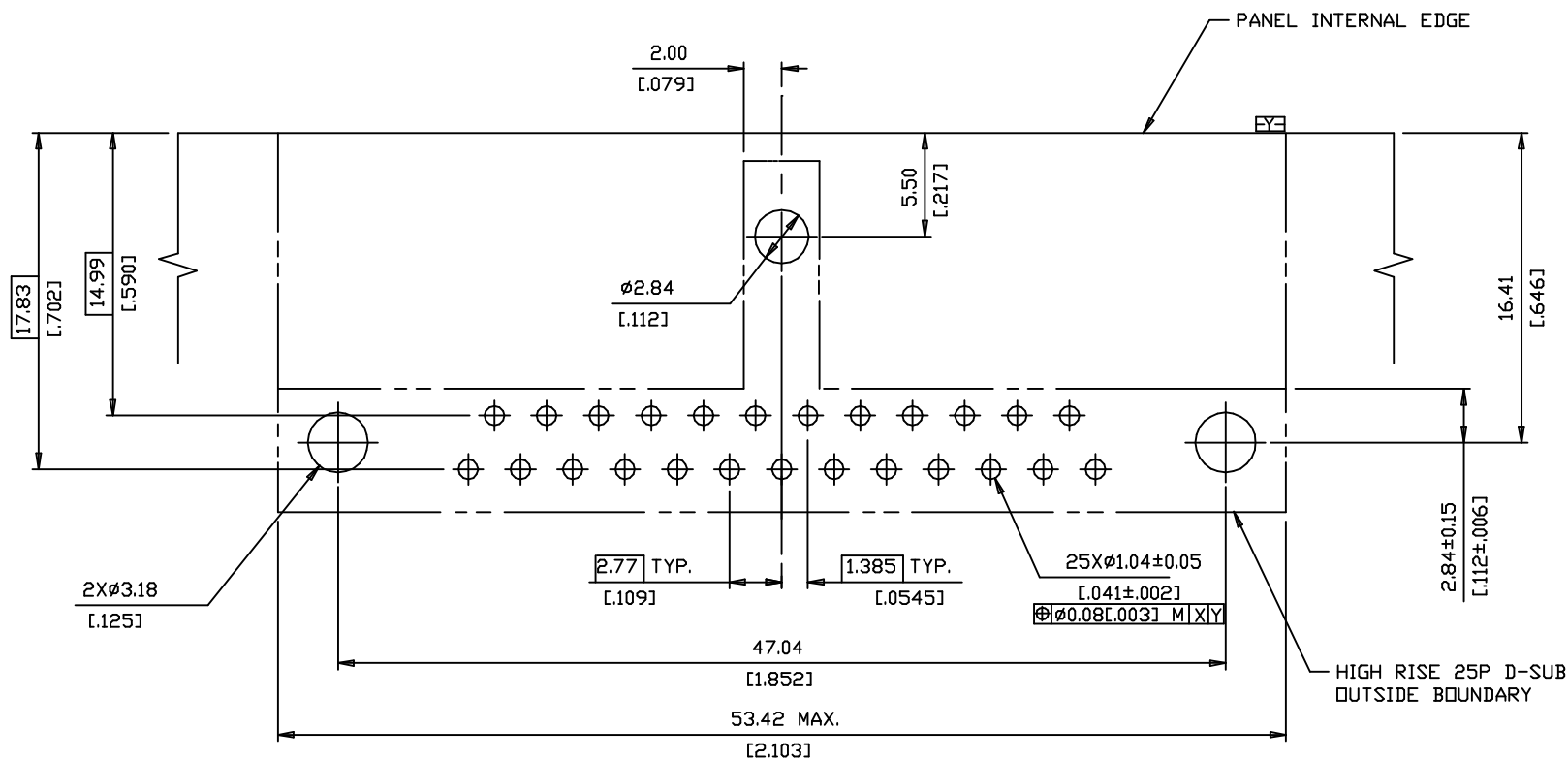
REMARK:
1. PRD. NO.: D M 1 1 3 5  - FR1

CONTACT GOLD PLATING AREA:

- 0=TIN/LEAD
- 1=GOLD FLASH
- 2=20u"
- 3=30u"
- 6=10u"

FOXCONN			
HDN HAI PRECISION IND. CO.,LTD. TAIPEI, TAIWAN, R.O.C.			
TITLE: PRODUCT RELATIVE DOCUMENTS		APPD.: Adward Zheng10/20'99	
PART NO.: DM1135*-FR*		CHKD.: Gong Liang10/20'99	
DWG NO.:		DR.: Jodan Hu10/20'99	REV.: A
		REV.: A	SHEET: 1/1

REV.	ECN. NO.	APPD.
A	HC951206	
B	IC961579	
C	IC983191	
D	IC9901653	鄭登升 10/6/99
E		



NOTES:

- 1 ALL THE BRACKETED DIMENSIONS ARE IN INCHES.
- 2.THIS IS TOP VIEW.

X. ±	X°. ±	UNITS	NAME(INTENDED USE)	FOXCONN HON HAI PRECISION IND. CO.,LTD. TAIPEI, TAIWAN, R.O.C.
.X ±	.X° ±	MAT'L	LAYOUT	
.XX ± [0.08 [.003]	.XX° ±		PART NO.(INTENDED USE)	TITLE: HIGH RISE D-SUB 25P P.C.B LAYOUT
.XXX±	.XXX°±	FINISH	DM1135*-(*)R*(*)P28, PR*,FR*	DWG NO: 301-0400-110
THESE DRAWINGS AND SPECIFICATIONS ARE THE PROPERTY OF HON HAI PRECISION IND. CO., LTD. AND SHALL NOT BE REPRODUCED COPIED OR USED IN ANY MANNER WITHOUT THE PRIOR WRITTEN CONSENT OF HON HAI PRECISION IND. CO., LTD.		Q'TY	APPD: Edward Zheng10/22'99	CHKD: Gong Liang10/22'99
			DR: Jordan Hui10/21'99	SCALE SHEET REV. 1/1 E

SPECIFICATIONS:

1. PERFORMANCE:

1-1: ELECTRICAL CHARACTERISTICS:

1-1-1. CONTACT CURRENT RATING : 3 AMPERES.

1-1-2. CONTACT RESISTANCE : 35 MILLIOHMS (MAX.).

1-1-3. DIELECTRICAL WITHSTANDING VOLTAGE :
1000 VAC (MIN.) AT SEA LEVEL.

1-1-4. INSULATION RESISTANCE :
5000 MEGOHMS (MIN.) INITIAL,
1000 MEGOHMS (MIN.) AFTER CONDITION TEST.

1-2: MECHANICAL CHARACTERISTICS:

(*) 1-2-1. CONTACT ENGAGEMENT FORCE : 12 OZ (MAX.).

(*) 1-2-2. CONTACT SEPARATION FORCE : 0.75 OZ (MIN.).

1-2-3. CONTACT RETENTION FORCE : 4 LB (MIN.).

1-2-4. OPERATING TEMPERATURE : -55 °C TO +105 °C .

1-2-5. DURABILITY : 500 CYCLES.

REMARK :

(*) : ONLY FOR FEMALE CONNECTORS.

FOXCONN HON HAI PRECISION INDUSTRY CO., LTD.
TAIPEI, TAIWAN, R.O.C

APPD.: *G-X Shin 1/22/98* PROD. SERIES :
D-SUB CONNECTOR

CHKD.: TITLE : SPECIFICATION

Gong Liang 1/20'98 DWG. NO.: 301-0300-145

DR. Ivanov.W 98/11/20 REV.: A SHEET: 1 OF 1

A IC985873
REV. ECN NO.

Gong Liang 1/22/98
APPD.