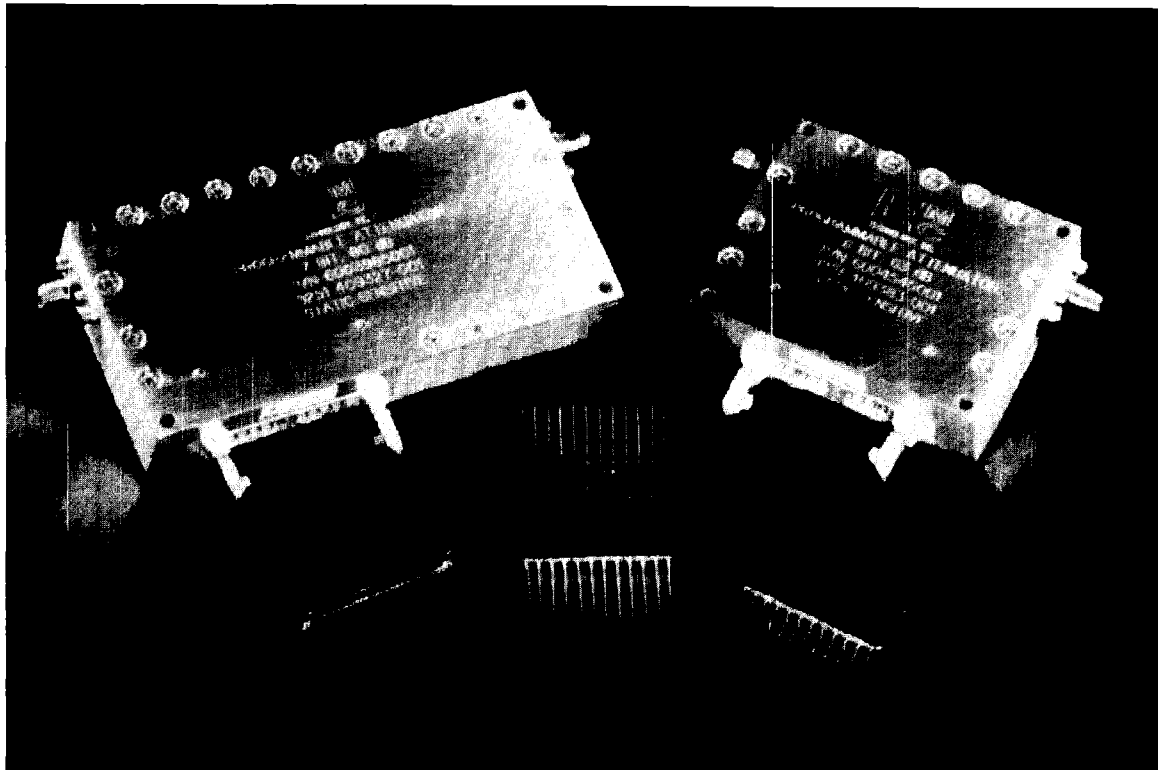
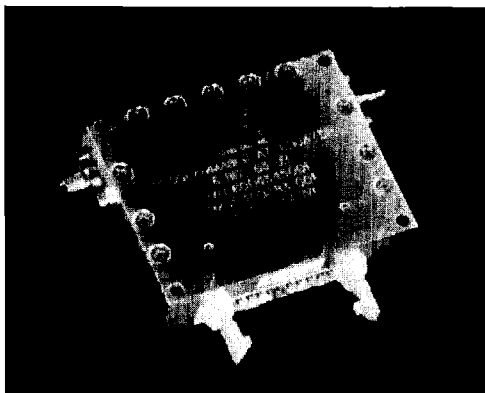


Digital Attenuators

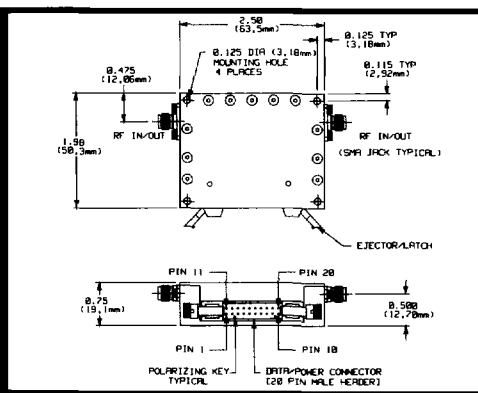


- TRUE TTL BUILT-IN DRIVER
- SUPERB ACCURACY OF ATTENUATION
- FAST SWITCHING SPEED
- LOW POWER CONSUMPTION
- QUICK DELIVERY (STOCK TO 6 WEEKS FOR PROTOTYPE)
- HIGH RELIABILITY (BUILT TO CONFORM TO MIL-STD-883)
- LOW VSWR
- OVER TWENTY FIVE YEARS OF ATTENUATION EXPERIENCE

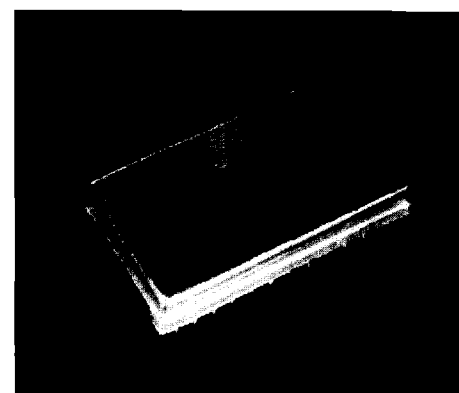
KEMCT5003*



CONNECTORIZED PACKAGE



MODEL P4XXX



24 PIN DIP

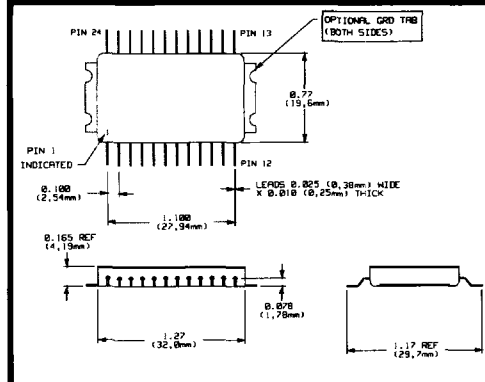
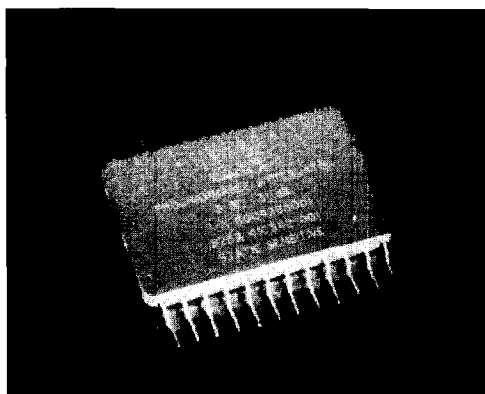
SPECIFICATIONS A

NUMBER OF BITS	TOTAL ATTN. (dB)	STEP SIZE (dB)	FREQUENCY RANGE (MHz)	INSERTION LOSS (dB MAX)
4	15	1	10 to 1100	4
4	15	1	200 to 2000	4
4	30	2	10 to 1100	4
4	30	2	200 to 2000	4
5	15.5	0.5	10 to 1100	5
5	15.5	0.5	200 to 2000	5
* 5	31	1	10 to 1100	5
5	31	1	200 to 2000	5
6	15.75	0.25	10 to 1100	6
6	15.75	0.25	200 to 2000	6
6	31.5	0.5	10 to 1100	6
6	31.5	0.5	200 to 2000	6
6	63	1	10 to 200	6
6	63	1	10 to 1100	7
6	63	1	200 to 2000	7
7	31.75	0.25	10 to 1100	7
7	31.75	0.25	200 to 2000	8
7	63.5	0.5	10 to 1100	8
7	63.5	0.5	200 to 2000	8
7	80	1	10 to 1100	8
7	80	1	200 to 1800	8
8	63.75	0.25	10 to 1100	9
8	63.75	0.25	200 to 1800	9
8	70	0.5	10 to 1100	9
8	70	0.5	200 to 1800	9

*SEE TYPICAL PERFORMANCE ON BACK PAGE

STANDARD FEATURES ON ALL UNITS

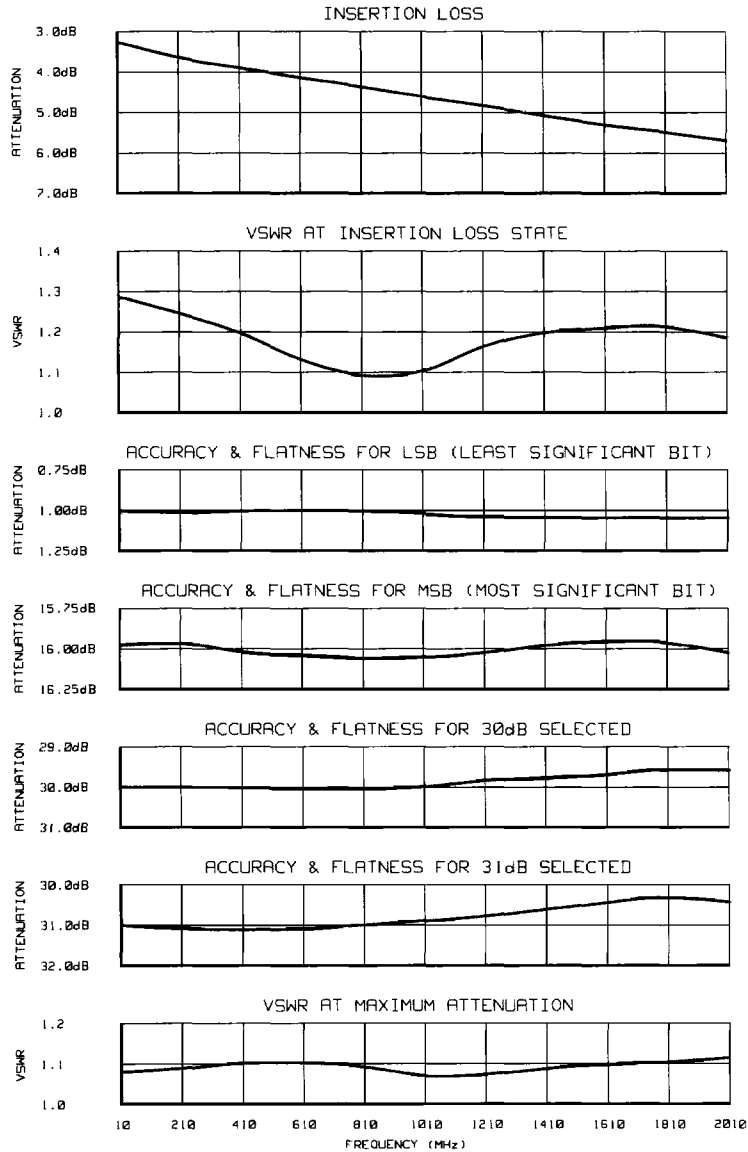
- VSWR: 1.5:1 MAX
- OPERATING TEMPERATURE: -55°C TO +125°C
- RF POWER: +20dBm MAX (OPERATING)
- DC POWER: +5V @ 1ma TYPICAL (10ma MAX)
- CONTROL: TTL DRIVERS BUILT-IN
- SWITCHING SPEED: 50ns MAX
- INTERNAL CIRCUITRY HERMETICALLY SEALED
- ACCURACY: ±(0.25dB + 2.0% OF ATTN. SETTING)



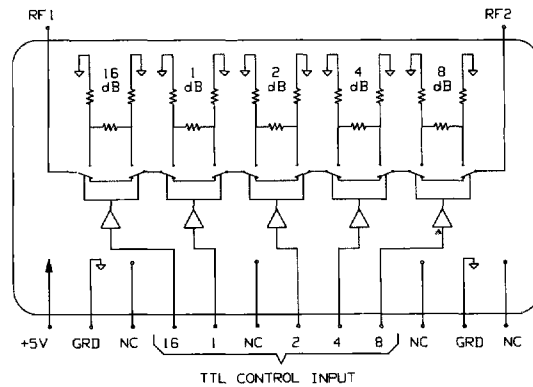
24 PIN SURFACE MOUNT
MODEL P3XXX

MOUNTING
INSTRUCTIONS
AVAILABLE

TYPICAL PERFORMANCE FOR P/N P151L (5 BIT, 31dB)



SCHEMATIC



FOR MORE INFORMATION CONTACT:
 EMC Technology, Inc.
 1971 Old Cuthbert Road
 Cherry Hill, N.J. 08034
 (609) 429-7800 FAX (609) 429-6814

