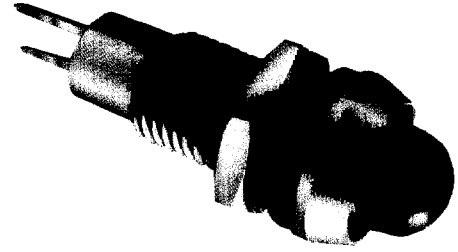


Professional LED Panel Lamp Indicator Range

FEATURES INCLUDE

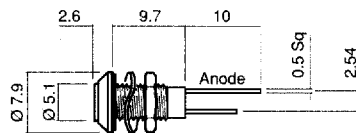
- Outstanding performance and reliability for professional and military applications
- High intensity with enhanced on/off contrast ratio
- Sealed and vibration proof
- Rugged construction
- Short bodied and low current styles are ideal for portable equipment
- Range of standard voltage options
- Neon models
- New sunlight readable



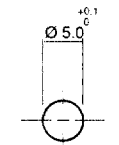
639/640 Series:

Ø 5.0 mm Mounting Flat Lens

- Short body is ideal where rear panel space is restricted
- Low current models suit battery powered equipment
- Excellent on/off contrast ratio
- IP67 sealing
- MLQ 10
- MTBF 90,000hrs
200,000hrs Low Current



SCALE 1:1
DIMENSIONS IN MM (TYPICAL)



Mounting Hole

Ordering information and technical characteristics (Ta = 25°C)

Order code	Colour	Lens	Voltage DC Vopr	Current DC Iopr	Luminous Intensity Iv @ Iopr	Wave Length λp	Viewing Angle (Inclusive)	Operating Temp Topr	Storage Temp Tstg
639 - 303 - 04	Red	Coloured Diffused	2.1	20	100	650	130	-40 to +85	-50 to +100
639 - 309 - 04	Yellow		2.2	20	100	585			
639 - 312 - 04	Green		2.2	20	160	563			
640 - 303 - 04	Red	Smoked	2.1	20	100	650	130	-40 to +85	-50 to +100
640 - 309 - 04	Yellow		2.2	20	100	583			
640 - 312 - 04	Green		2.2	20	160	563			
			V	mA	mcd	nm	deg	°C	°C

Low Current Range

Order code	Colour	Lens	Voltage DC Vopr	Current DC Iopr	Luminous Intensity Iv @ Iopr	Wave Length λp	Viewing Angle (Inclusive)	Operating Temp Topr	Storage Temp Tstg
639 - 303 - 01	Red	Coloured Diffused	1.8	2	4.0	650	130	-40 to +85	-50 to +100
639 - 309 - 01	Yellow		1.9	2	4.0	585			
639 - 312 - 01	Green		1.9	2	6.5	563			
640 - 303 - 01	Red	Smoked	1.8	2	4.0	650	130	-40 to +85	-50 to +100
640 - 309 - 01	Yellow		1.9	2	4.0	583			
640 - 312 - 01	Green		1.9	2	6.5	563			
			V	mA	mcd	nm	deg	°C	°C