

# Fiber Optic Components

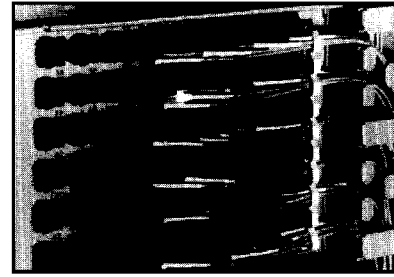
## Patch Cords LightTracer™ Fiber Optic Patch Cords

The most sophisticated fiber optic terminal equipment cannot overcome the disconnection of the physical fiber plant. ADC's new LightTracer fiber optic patch cords can completely eliminate faults in the fiber optic facility caused by accidental disconnection of active circuits.

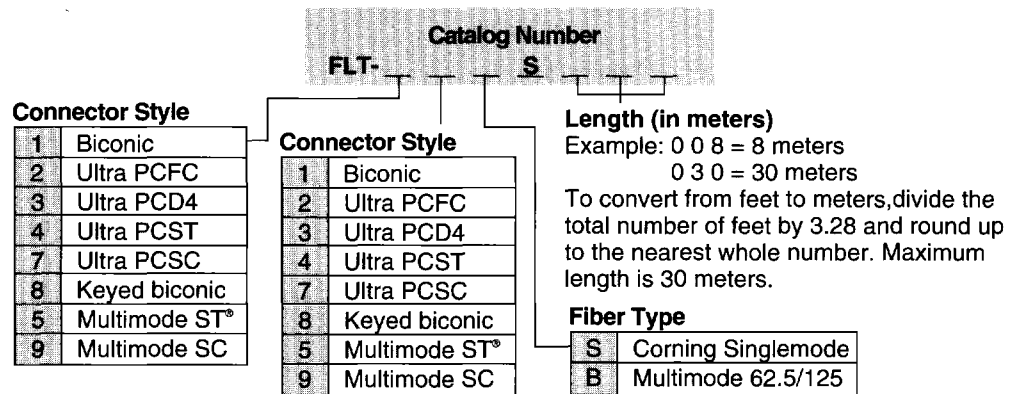
Removal of the wrong fiber optic patch cord is a major cause of intermittent and untraceable faults. The LightTracer patch cords enable network technicians to quickly and easily differentiate between fiber optic patch cords running from one fiber frame to another over a distance of many feet. The unique LightTracer patch cords employ an LED-like flash mechanism that enables users to trace individual patch cords from one end to the other when an energy source is attached, simplifying the fiber cross-connect process. With the visible identification provided by LightTracer, network technicians need not rely on recorded data to locate individual patch cords.

LightTracer patch cords are available with all standard singlemode connectors, including biconic, FC, D4, ST®, SC and keyed biconic, as well as multimode ST® and SC connectors.

LightTracer fiber optic patch cords are an accessory to ADC's Frameworkx™ fiber distribution frame management system, which provides a variety of functions that ensure end-to-end connectivity in the optical transport system. LightTracer patch cords are also compatible with any fiber distribution frame in the network today.



LightTracer patch cord shown with portable light source.



Ordering Information	
Description	Catalog Number
Portable light source kit <i>Includes light source, 2 batteries, battery charger and carrying case</i>	FLT-PLSKIT
Replacement fiber coupling pigtail – 1 meter	FLT-FCP1
Replacement fiber coupling pigtail – 3 meters	FLT-FCP3
Replacement lamp	FLT-LAMP
Value-Added Plug-In Module – requires -48 Vdc	FLT-VAMKIT