

PRODUCT NUMBER  
5 5 4 9 5 - X X X - X X X X X LF

PLATING  
S=15µm[0.38µm]GOLD ON CONTACT AREA  
150µm[3.81µm]TIN/LEAD ON TAIL  
G=30µm[0.76µm]GOLD ON CONTACT AREA  
150µm[3.81µm]TIN/LEAD ON TAIL  
F=8µm[0.20µm]GOLD FLASH ON CONTACT AREA  
150µm[3.81µm]TIN/LEAD ON TAIL

LEAD FREE PLATING  
S=15µm[0.38µm]GOLD ON CONTACT AREA  
100µm[2.54µm]PURE TIN ON TAIL  
G=30µm[0.76µm]GOLD ON CONTACT AREA  
100µm[2.54µm]PURE TIN ON TAIL  
F=8µm[0.20µm]GOLD FLASH ON CONTACT AREA  
100µm[2.54µm]PURE TIN ON TAIL

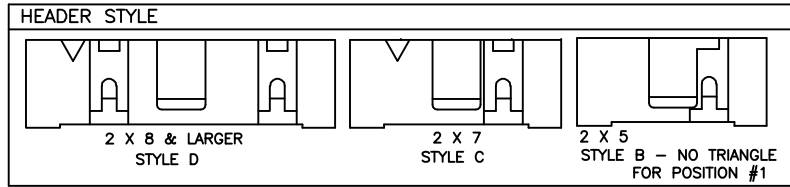
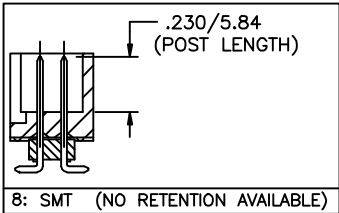
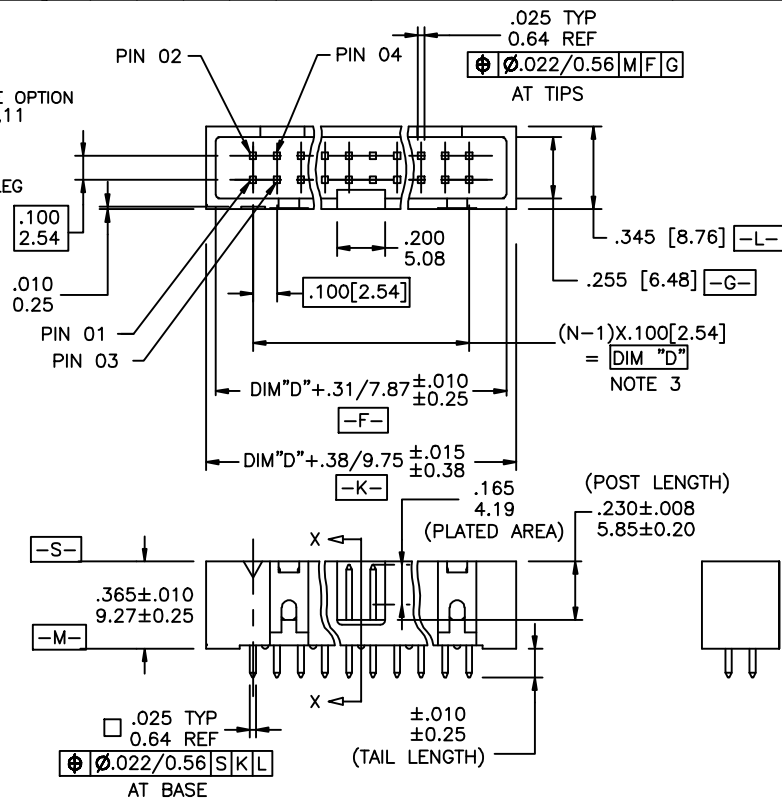
LEAD FREE OPTION  
NOTE 10,11

RETENTION  
R= RETENTIVE LEG  
NOTE 6

POLARIZATION  
NOTE 9

TAIL	
1	.090/2.29
2	.112/2.84
4	.120/3.05
6	.150/3.81
7	.675/17.15
8	SMT

TOTAL POSITIONS	HDR. STYLE
10	2 x 5 B
14	2 x 7 C
16	2 x 8 D
20	2 x 10 D
26	2 x 13 D
30	2 x 15 D
34	2 x 17 D
40	2 x 20 D
44	2 x 22 D
50	2 x 25 D
60	2 x 30 D



mat'l. code	surface	tolerance	projection	product family
ISO 1902	ISO 406	ISO 1101	ISO 1101	QUICKIE
ltr	ecn no	dr	date	tolerances unless otherwise specified
A	V01843	AZ	7/27/00	angles .XXX±.01/.XXX±.03
B	M05-0089	ERE	5/20/05	linear .XXX±.006/.XXX±.013
C	M06-0289	AGS	7/29/06	0'±2' .XXX±.0020/.XXX±.05
D	M08-0279	MHT	9/30/08	dr
				engr A. ZEREBILOV 7/27/00
				chr M. MOSTOLLER 7/27/00
				appd M. MOSTOLLER 7/27/00
sheet	revision	D	D	
index	sheet	1	2	
				title
				.100/2.54mm LOW PROFILE SHROUDED VERTICAL HEADER
				dwg no
				55495
				sheet 1 of 2 size
				A3
				type
				Product Customer Drawing

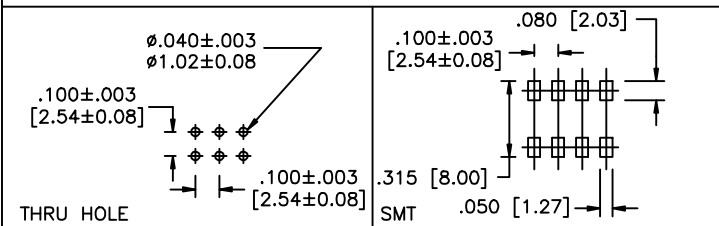


Copyright FCI

Form A3

NOTES:

- ① HOUSING MAT'L: HIGH TEMPERATURE THERMOPLASTIC. UL94V-0  
 COLOR: BLACK, NO END WINDOWS.  
 OR  
 MINERAL FILLED LCP FLAME RETARDENT  
 PER UL-94V-0. COLOR: BLACK.
- ② PIN MATERIAL: PHOSPHOR-BRONZE
- ③ TO DETERMINE DIMENSIONS:  
 N = NUMBER OF POSITIONS PER ROW  
 EXAMPLE: 10 POS.,(N-1) x .100[2.54]=.900[22.86]
- 4. 3 LBS./1.36 KG MIN. RETENTION
- 5. PACKAGED IN TRAYS
- ⑥ RETENTIVE LEG APPLICABLE TO TAIL LENGTHS .125/3.18 MAX.  
 5LB/2.3KG MAX INSERTION FORCE AND .25LB./1KG MIN RETENTION FORCE  
 PER RETENTIVE PIN USING .062/1.57 THICK CIRCUIT BOARD AND RECOMMENDED  
 HOLE PATTERN. RETENTIVE LOCATION AT THE DISCRETION OF THE MANUFACTURER.  
 RETENTION PIN MAY BE SHIFTED TO NEXT POSITION.
- ⑦ OMIT FROM PRODUCT NUMBER IF THIS FEATURE IS NOT APPLICABLE.
- 8. UNDERPLATING: 50μ"/1.27μm Ni.
- ⑨ FOR POLARIZATION SPECIFY POSITION NUMBER(i.e. 03 = PIN 3) TO OMIT PIN.  
 OMIT FROM PRODUCT NUMBER IF THIS FEATURE IS NOT APPLICABLE.
- ⑩ ADD "LF" SUFFIX AT THE END OF PART NUMBER FOR LEAD FREE OPTION.
- ⑪ THIS PRODUCT MEETS EUROPEAN UNION DIRECTIVES AND OTHER  
 COUNTRY REGULATION AS DESCRIBED IN GS-22-008.
- ⑫ THE HOUSING WILL WITHSTAND EXPOSURE TO 260°C PEAK TEMPERATURE  
 FOR 15 SECONDS IN A WAVE SOLDER APPLICATION WITH A 1.5mm  
 MINIMUM THICK CIRCUIT BOARD. SEE APPLICATION NOTES/PROCEDURES  
 IF THEY ARE AVAILABLE.  
 THE HOUSING WILL WITHSTAND EXPOSURE TO 260°C PEAK TEMPERATURE  
 FOR 20 SECONDS IN A CONVECTION, INFRA-RED OR VAPOR PHASE REFLOW  
 OVEN. SEE APPLICATION NOTES/PROCEDURES IF THEY ARE AVAILABLE.



RECOMMENDED BOARD LAYOUT

mat'l. code		surface	tolerance	projection	product family
ISO 1902		ISO 406	ISO 1101		QUICKIE
ltr	ecn no	dr	date	title	
D				.100/2.54mm LOW PROFILE SHOROUDED VERTICAL HEADER	
D		angles	linear	INCH/MM	scale 1:1
		0°±2'	.XX±.01/.XX±0.3 .XXX±.005/.XXX±0.13 .XXX±.0020/.XXX±.05		
dr	A. ZEREBILOV		7/27/00	dwg no	sheet 2 of 2 size
engr	M. MOSTOLLER		7/27/00	55495	A3
chr	M. MOSTOLLER		7/27/00	type Product Customer Drawing	
appd	M. MOSTOLLER		7/27/00		
sheet index	revision sheet				