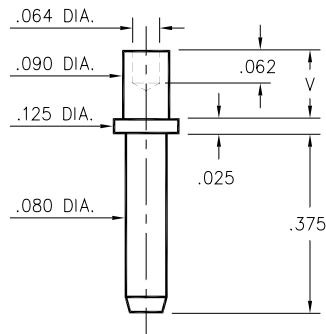


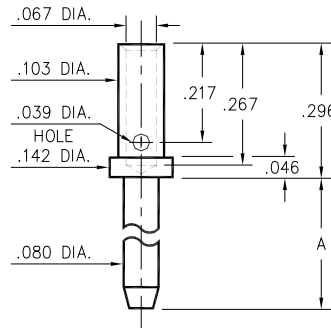
### 3231



| Basic Part Number | Board Thickness | Length V |
|-------------------|-----------------|----------|
| 3231-2            | .062            | .094     |
| 3231-3            | .094            | .125     |
| 3231-4            | .125            | .156     |

**3231-X-00-XX-00-00-08-0**  
Swage mount in .094 hole.

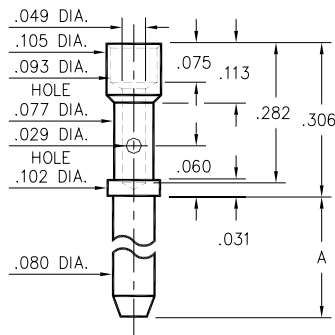
### 3609



| Basic Part Number | Pin Length A |
|-------------------|--------------|
| 3609-1            | .200         |
| 3609-2            | .375         |
| 3609-3            | .500         |

**3609-X-07-XX-00-00-08-0**  
#16A Crimp barrel

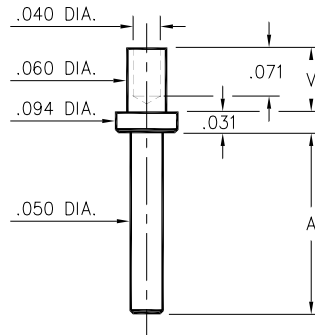
### 3601



| Basic Part Number | Pin Length A |
|-------------------|--------------|
| 3601-1            | .200         |
| 3601-2            | .375         |
| 3601-3            | .500         |

**3601-X-07-XX-00-00-08-0**  
#20A Crimp barrel

### 3133/3138/3152



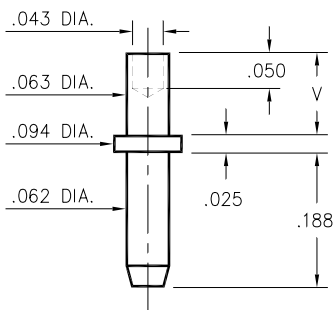
| Basic Part Number | Pin Length A |
|-------------------|--------------|
| 3152-X            | .094         |
| 3133-X            | .219         |
| 3138-X            | .282         |

| - X - | Board Thickness | Length V |
|-------|-----------------|----------|
| 1     | .031            | .063     |
| 2     | .062            | .094     |
| 3     | .094            | .125     |
| 4     | .125            | .156     |

**31XX-X-00-XX-00-00-08-0**  
Specify board thickness  
Swage mount in .064 hole

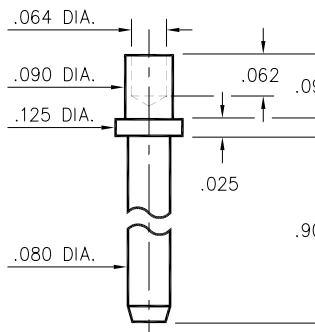
### 3144



| Basic Part Number | Board Thickness | Length V |
|-------------------|-----------------|----------|
| 3144-1            | .031            | .053     |
| 3144-2            | .062            | .084     |
| 3144-3            | .094            | .115     |

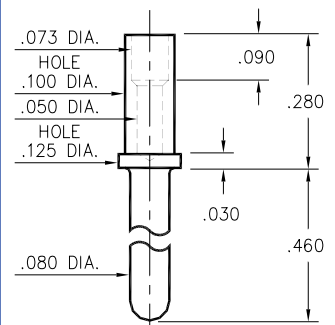
**3144-X-00-XX-00-00-08-0**  
Swage mount in .067 hole.

### 3233



**3233-2-00-XX-00-00-08-0**  
Swage mount in .094 hole.  
For .062 thick board.

### 0520



**0520-0-00-XX-00-00-03-0**  
Annealed  
#18 Gage crimp barrel

## SPECIFICATIONS

**PIN MATERIAL:**  
Brass Alloy 360, 1/2 Hard  
( Except Swage pins which  
are annealed )

**DIMENSION IN INCHES**  
**TOLERANCES ON:**  
LENGTHS: ±.005  
DIAMETERS: ±.002  
ANGLES: ± 2°

ORDER CODE: XXXX - X - 0X - XX - 00 - 00 - 0X - 0

BASIC PART #

**SPECIFY PIN FINISH:**  
**01** 200µ" TIN/LEAD OVER NICKEL  
**15** 10µ" GOLD OVER NICKEL  
**21** 20µ" GOLD OVER NICKEL  
**34** 50µ" GOLD OVER NICKEL