

# MTRJ Field TV

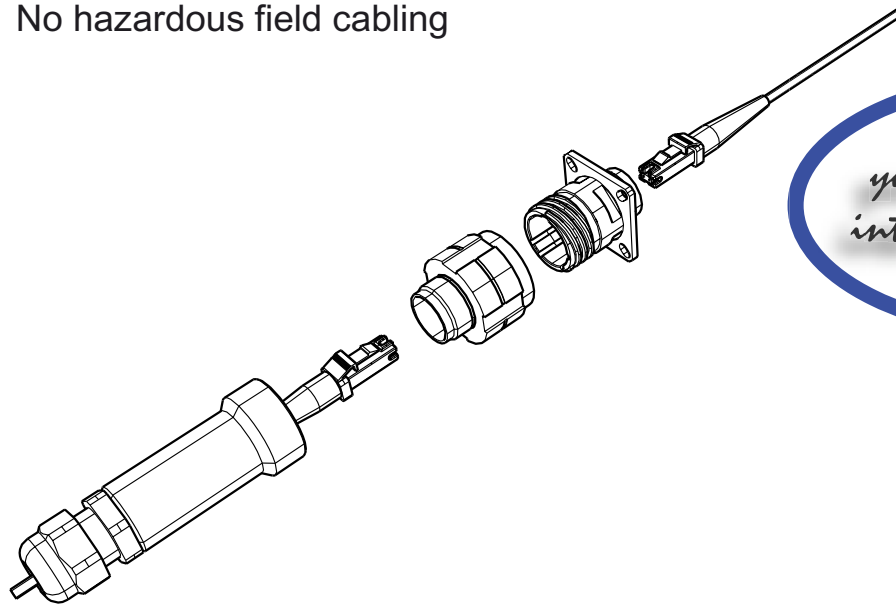
## Ethernet Connection System For Harsh Environment

The MTRJ Field offers an easy system to upgrade from a standard to an environmental MTRJ.

- Sealed against fluids and dust (IP67)
- Shock, Vibration proof,
- No cabling operation in field and no tools required for installation

With the patented RJStop ® system you can use a standard MTRJ patchcord in a metallic plug which will protect it from shocks, dust and fluids.

No hazardous field cabling



This metallic plug is connected into a receptacle, using a Tri Start Thread coupling mechanism (MIL-DTL-38999 series III type) with anti-decoupling device for high vibrations.

Optical performance :

- Number of Channel : 1/2/4
- typical Insertion Loss : 0,5db in MM
- Durability 500 mating/unmating cycles (changes for <0,2 db



*Transform your MTRJ patchcord into an Environmental Connector*

*Applications*

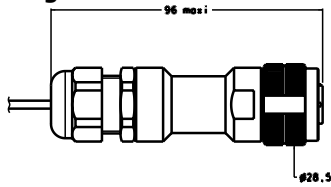
Data acquisition and transmission in Harsh Environment

- Railways
- Radars
- Shelters
- Battlefield Communication systems
- Navy

**Amphenol**  
Socapex  
Fibre Optic Business Division

# MTRJ Field TV

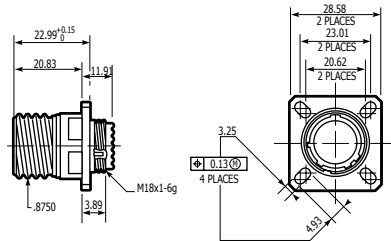
## • Plug



## • Square Flange Receptacle

Front Mount

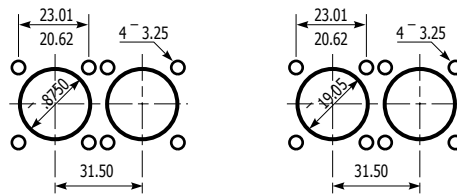
Rear Mount



Panel Drilling

Square flange receptacle rear panel mounting

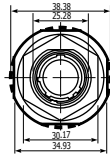
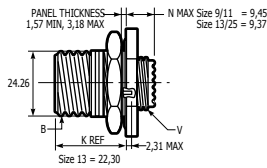
Square flange receptacle front panel mounting



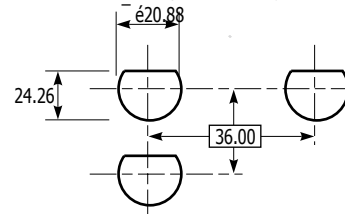
## • Jam Nut Receptacle

Front Mount

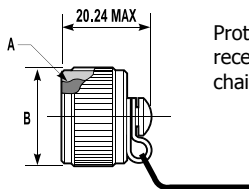
Rear Mount



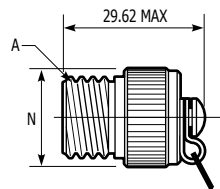
Panel Drilling  
Jam nut receptacle rear panel mounting



## • Protective caps



Protective cap for receptacles (metallic chain or nylon cord)



Protective cap for plug (metallic chain or nylon cord)

## • How to order : MTRJ Field tv

| Serie :              | MTRJF TV   | 6M | C | G | N |
|----------------------|--|----|---|---|---|
| <b>MTRJ Field TV</b> |  |    |   |   |   |
| <b>Shell type</b>    |  |    |   |   |   |
| 6                    | : Plug with metal backshell, plastic PG clamp      |    |   |   |   |
| 6M                   | : Plug with metal backshell and PG clamp           |    |   |   |   |
| 2                    | : Square flange receptacle                         |    |   |   |   |
| 2PE                  | : Sq. flange, metal backshell and plastic PG clamp |    |   |   |   |
| 2PEM                 | : Sq. flange, metal backshell and PG clamp         |    |   |   |   |
| 7                    | : Jam nut receptacle                               |    |   |   |   |
| 7PE                  | : Jam nut, metal backshell and plastic PG clamp    |    |   |   |   |
| 7PEM                 | : Jam nut, metal backshell and PG clamp            |    |   |   |   |
| <b>Cable type</b>    |  |    |   |   |   |
| C                    | : Ruggedized cable ! 2,8mm, 2 fibers 900µm         |    |   |   |   |
| D                    | : Duplex cable, 2 fibers ! 1,6mm                   |    |   |   |   |
| S                    | : Scindex cable, 2 fibers ! 1,6mm                  |    |   |   |   |
| <b>Shell finish</b>  |  |    |   |   |   |
| N                    | : Nickel plated                                    |    |   |   |   |
| G                    | : Olive drab cadmium plated                        |    |   |   |   |
| B                    | : Bronze   |    |   |   |   |
| <b>Polarization</b>  |  |    |   |   |   |
| N                    | : Normal   |    |   |   |   |
| A / B / C / D / E    |  |    |   |   |   |