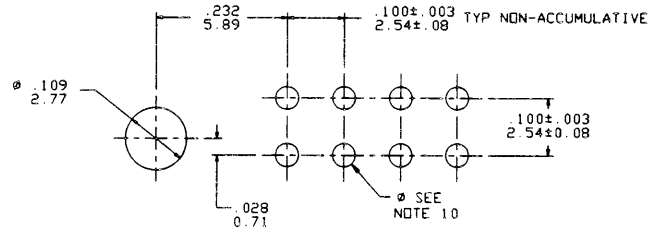
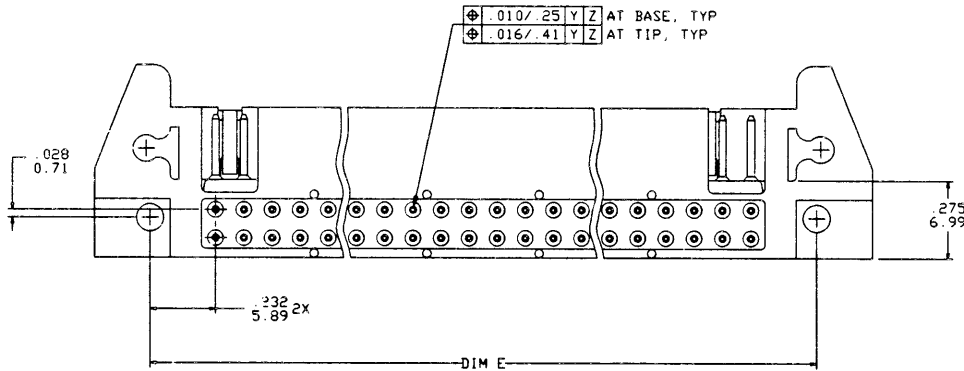


PRODUCT NO
SEE TABLE

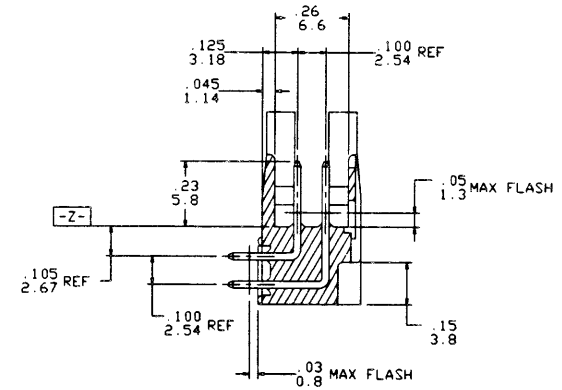
REVISIONS			
REV	DESCRIPTION	BY	DATE
C			



RECOMMENDED HOLE PATTERN -
SCALE 10:1



VIEW F-F



SECTION G-G
ROTATED 90° CW

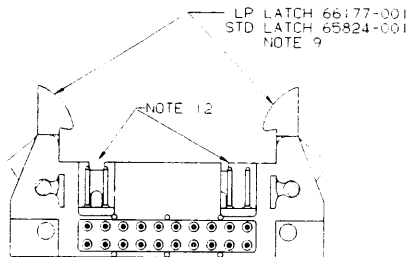
SHEET INDEX	ISSUE SH NO	1	CUSTOMER COPY		DuPont Electronics		DU PONT	
MODEL		DO NOT SCALE DRAWING		TOLERANCE UNLESS OTHERWISE NOTED	INCH/MM	MATL	DR	DATE
				LINEAR	.0008/.005 / .0008/.13	FINISH	M. C. SMYK	7/16/90
TABULATION SHEETS REQUIRED		YES	INCH	ANGLES	0° ± 2°	///	M. C. SMYK	7/16/90
NO		MM				///	M. C. SMYK	7/16/90
TITLE							SEA-HORSE, RIGHT ANGLE	
SCALE							SIZE	DWS NO
5/1							D	67916
SHEET							2	

NOTE: This print is the property of and embodies proprietary designs of THE DUPONT COMPANY. No part of the design shown on this print may be used in any way without the written consent of DUPONT ELECTRONICS, New Cumberland, PA.

PRODUCT NO
SEE TABLE

REVISIONS

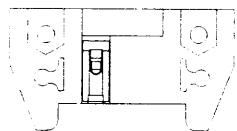
REV	DESCRIPTION	BY	DATE
B			



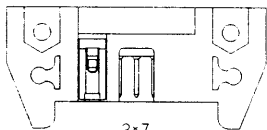
HEADER WITH LATCHES

NOTES:

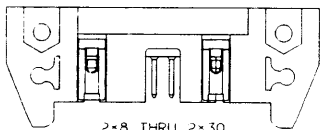
1. RECOMMENDED MOUNTING SCREW SIZE: #2-56 FILLISTER HD MACH SCREW, 3/8 LG. FOR 1/16" & 3/32" LG FOR 1/8" BOARD.
2. MOLDING MAT: 1:30% GLASS FILLED POLYESTER, FLAME RETARDANT PER UL-94V-0, COLOR: BLUE.
3. PIN MATERIAL: 3/4 HARD PHOS.-BRONZE ALLOY UNS C-51000.
4. 1" MAX DRAFT PERMISSIBLE ON ALL SURFACES UNLESS OTHERWISE SPECIFIED.
5. LOGO AND TRIANGLE LOCATION TO BE OPTIONAL.
6. [-B-] BASIC DIM SHALL BE LOCATED SYMMETRICAL TO DATUM -A-.
7. PLATING ON LEAD-IN PORTION OF PIN IS MANUFACTURING OPTION.
8. THESE SLOTS DO NOT EXIST ON 2x5 AND 2x7 SIZES.
9. THE LATCHES THAT ARE INSTALLED IN SOME HEADERS MUST WITHSTAND A PUSHOUT FORCE OF 2.0 LBS./1.9 KGS MIN WHILE IN THE INSTALLATION POSITION.
10. .040±.003/1.02±.08 DIA HOLE TYP FOR SQ PINS. .035±.003/1.89±.08 DIA HOLE TYP FOR ROUND PINS.
11. RETENTION FEATURE AVAILABLE ON ROUND PIN P/N'S ONLY. RETENTION P/N INCLUDES THE LETTER "R" AFTER THE EXISTING P/N.
EXAMPLE: 67916-xxx FOR EXISTING P/N
67916-xxxr FOR RETENTION P/N
15 LBS/6.8 KGS MAX INSERTION AND .25 LBS/1.1 KGS MIN RETENTION FORCE WHEN USED IN .035±.003/1.89±.08 DIA HOLES AND .062/1.57 THICK PC BOARD. RETENTION FEATURE LOCATION IS MANUFACTURERS OPTION.
12. MOLDED-IN POLARIZING KEY(S) ARE MANUFACTURER'S OPTION.



2-5
STYLE B



2-7
STYLE C




2-8 THRU 2-30
(2-10 SHOWN)
STYLE D

SHEET INDEX		ISSUE		SH NO		I		CUSTOMER COPY		CODE IDENT		DATE		TITLE	
								22526		7/16/90		M. CORNMAN		HEADER, QUICK IE SEA-HORSE, RIGHT ANGLE	
MODEL		DO NOT SCALE DRAWING		TOLERANCE UNLESS OTHERWISE NOTED		INCH/MM		MATERIAL		DR		ENGR		SCALE	
I				.001/.01/.01/.3				--		M. SMYK		7/16/90		5/1	
				.0001/.005/.001/.13				FINISH		M. SMYK		7/16/90		D	
TABULATION SHEETS REQUIRED		YES/NO		THIRD ANGLE PROJECTION		INCH/MM		ANGLES		APPR		M. SMYK		DWG NO	
								0°±2°		7/16/90		57916		SHEET 3	

NOTE: This print is the property of and embodies proprietary designs of THE DUPONT COMPANY. No part of the design shown on this print may be used in any way without the written consent of DUPONT ELECTRONICS, New Castle, PA.

PRODUCT NO	SIZE	LATCHES NOTE 9	PIN SHAPE	DIM A	DIM B	DIM C	DIM D	DIM E	TERMINAL PLATING	STYLE	REVISIONS		
											REV	DESCRIPTION	BY
67916-037	2x20	NO	RND	2.760/70.10	1.900/48.26	2.220/56.39	.105/2.67	2.36/59.94	30μ"/.76μ Au OVER 50μ"/1.27μ Ni	D	A		
-038			SQ				.105/2.67		150μ"/3.81μ Sn				
-039			RND				.150/3.81		30μ"/.76μ Au OVER 50μ"/1.27μ Ni				
-040			SQ				.150/3.81		3.81μ/150μ Sn				
-041			SQ				.675/17.15		30μ"/.76μ Au OVER 50μ"/1.27μ Ni				
-042	2x20		SQ	2.760/70.10	1.900/48.26	2.220/56.39	.675/17.15	2.36/59.94	150μ"/3.81μ Sn				
-043	2x25		RND	3.260/82.80	2.400/60.96	2.720/69.09	.105/2.67	2.86/72.64	30μ"/.76μ Au OVER 50μ"/1.27μ Ni				
-044			SQ				.105/2.67		150μ"/3.81μ Sn				
-045			RND				.150/3.81		30μ"/.76μ Au OVER 50μ"/1.27μ Ni				
-046			SQ				.150/3.81		150μ"/3.81μ Sn				
-047			SQ				.675/17.15		30μ"/.76μ Au OVER 50μ"/1.27μ Ni				
-048	2x25	NO	SQ	3.260/82.80	2.400/60.96	2.720/69.09	.675/17.15	2.86/72.64	150μ"/3.81μ Sn	D			
-049									UNAVAILABLE				
-050									UNAVAILABLE				
-051									UNAVAILABLE				
-052									UNAVAILABLE				
-053									UNAVAILABLE				
-054									UNAVAILABLE				
-055	2x7	STD	RND	1.460/37.08	.600/15.24	.920/23.37	.105/2.67	1.06/26.92	30μ"/.76μ Au OVER 50μ"/1.27μ Ni	C			
-056			SQ				.105/2.67		150μ"/3.81μ Sn				
-057			RND				.150/3.81		30μ"/.76μ Au OVER 50μ"/1.27μ Ni				
-058			SQ				.150/3.81		150μ"/3.81μ Sn				
-059			SQ				.675/17.15		30μ"/.76μ Au OVER 50μ"/1.27μ Ni				
-060	2x7		SQ	1.460/37.08	.600/15.24	.920/23.37	.675/17.15	1.06/26.92	150μ"/3.81μ Sn	C			
-061	2x8		RND	1.560/39.62	.700/17.78	1.020/25.91	.105/2.67	1.16/29.46	30μ"/.76μ Au OVER 50μ"/1.27μ Ni	D			
-062			SQ				.105/2.67		150μ"/3.81μ Sn				
-063			RND				.150/3.81		30μ"/.76μ Au OVER 50μ"/1.27μ Ni				
-064			SQ				.150/3.81		150μ"/3.81μ Sn				
-065			SQ				.675/17.15		30μ"/.76μ Au OVER 50μ"/1.27μ Ni				
-066	2x8		SQ	1.560/39.62	.700/17.78	1.020/25.91	.675/17.15	1.16/29.46	150μ"/3.81μ Sn				
-067	2x10		RND	1.760/44.70	.900/22.86	1.220/30.99	.105/2.67	1.36/34.54	30μ"/.76μ Au OVER 50μ"/1.27μ Ni				
-068			SQ				.105/2.67		150μ"/3.81μ Sn				
-069			RND				.150/3.81		30μ"/.76μ Au OVER 50μ"/1.27μ Ni				
-070			SQ				.150/3.81		150μ"/3.81μ Sn				
-071			SQ				.675/17.15		30μ"/.76μ Au OVER 50μ"/1.27μ Ni				
67916-072	2x10	STD	SQ	1.760/44.70	.900/22.86	1.220/30.99	.675/17.15	1.36/34.54	150μ"/3.81μ Sn	D			

CUSTOMER COPY	DuPont Electronics		
CODE IDENT 22526	DR M. CORNMAN	DATE 7/16/90	TITLE HEADER, QUICKIE SEA-HORSE, RIGHT ANGLE
	CHK M. SMYK	7/16/90	SCALE 5/1
	ENGR M. SMYK	7/16/90	DWG NO 67916
	APPR M. SMYK	7/16/90	SHEET 5

SHEET INDEX	ISSUE SH NO	TOLERANCE UNLESS OTHERWISE NOTED		INCH/MM	MATL	DR	DATE
		DO NOT SCALE DRAWING			///	M. CORNMAN	7/16/90
		THIRD ANGLE PROJECTION		LINEAR	///	M. SMYK	7/16/90
FABULATION SHEETS REQUIRED	YES	INCH MM		ANGLES 0°±2°	FINISH	M. SMYK	7/16/90

NOTE: This print is the property of and embodies proprietary designs of THE DUPONT COMPANY. No part of the design shown on this print may be used in any way without the written consent of DUPONT ELECTRONICS, Inc., Columbia, Pa.

FORM 1308E REV. 12-89

PRODUCT NO	SIZE	LATCHES NOTE 9	PIN SHAPE	DIM A	DIM B	DIM C	DIM D	DIM E	TERMINAL PLATING	STYLE
67916-073	2x13	STD	RND	2.060/52.32	1.200/30.48	1.520/38.61	.105/2.67	1.66/42.16	30μ"/.76μ Au OVER 50μ"/1.27μ Ni	D
-074			SQ				.105/2.67		150μ"/3.81μ Sn	
-075			RND				.150/3.81		30μ"/.76μ Au OVER 50μ"/1.27μ Ni	
-076			SQ				.150/3.81		150μ"/3.81μ Sn	
-077			SQ				.675/17.15		30μ"/.76μ Au OVER 50μ"/1.27μ Ni	
-078	2x13		SQ	2.060/52.32	1.200/30.48	1.520/38.61	.675/17.15	1.66/42.16	150μ"/3.81μ Sn	
-079	2x17		RND	2.460/62.48	1.600/40.64	1.920/48.77	.105/2.67	2.06/52.32	30μ"/.76μ Au OVER 50μ"/1.27μ Ni	
-080			SQ				.105/2.67		150μ"/3.81μ Sn	
-081			RND				.150/3.81		30μ"/.76μ Au OVER 50μ"/1.27μ Ni	
-082			SQ				.150/3.81		150μ"/3.81μ Sn	
-083			SQ				.675/17.15		30μ"/.76μ Au OVER 50μ"/1.27μ Ni	
-084	2x17		SQ	2.460/62.48	1.600/40.64	1.920/48.77	.675/17.15	2.06/52.32	150μ"/3.81μ Sn	
-085	2x20		RND	2.760/70.10	1.900/48.26	2.220/56.39	.105/2.67	2.36/59.94	30μ"/.76μ Au OVER 50μ"/1.27μ Ni	
-086			SQ				.105/2.67		150μ"/3.81μ Sn	
-087			RND				.150/3.81		30μ"/.76μ Au OVER 50μ"/1.27μ Ni	
-088			SQ				.150/3.81		150μ"/3.81μ Sn	
-089			SQ				.675/17.15		30μ"/.76μ Au OVER 50μ"/1.27μ Ni	
-090	2x20		SQ	2.760/70.10	1.900/48.26	2.220/56.39	.675/17.15	2.36/59.94	150μ"/3.81μ Sn	
-091	2x25		RND	3.260/82.80	2.400/60.96	2.720/69.09	.105/2.67	2.86/72.64	30μ"/.76μ Au OVER 50μ"/1.27μ Ni	
-092			SQ				.105/2.67		150μ"/3.81μ Sn	
-093			RND				.150/3.81		30μ"/.76μ Au OVER 50μ"/1.27μ Ni	
-094			SQ				.150/3.81		150μ"/3.81μ Sn	
-095			SQ				.675/17.15		30μ"/.76μ Au OVER 50μ"/1.27μ Ni	
-096	2x25	STD	SQ	3.260/82.80	2.400/60.96	2.720/69.09	.675/17.15	2.86/72.64	150μ"/3.81μ Sn	
-097	2x30	NO	RND	3.760/95.50	2.900/73.66	3.220/81.79	.105/2.67	3.36/85.34	30μ"/.76μ Au OVER 50μ"/1.27μ Ni	
-098			SQ				.105/2.67		150μ"/3.81μ Sn	
-099			RND				.150/3.81		30μ"/.76μ Au OVER 50μ"/1.27μ Ni	
-100			SQ				.150/3.81		150μ"/3.81μ Sn	
-101			SQ				.675/17.15		30μ"/.76μ Au OVER 50μ"/1.27μ Ni	
-102		NO	SQ				.675/17.15		150μ"/3.81μ Sn	
-103		STD	RND				.105/2.67		30μ"/.76μ Au OVER 50μ"/1.27μ Ni	
-104			SQ				.105/2.67		150μ"/3.81μ Sn	
-105			RND				.150/3.81		30μ"/.76μ Au OVER 50μ"/1.27μ Ni	
-106			SQ				.150/3.81		150μ"/3.81μ Sn	
-107			SQ				.675/17.15		30μ"/.76μ Au OVER 50μ"/1.27μ Ni	
67916-108	2x30	STD	SQ	3.760/95.50	2.900/73.66	3.220/81.79	.675/17.15	3.36/85.34	150μ"/3.81μ Sn	D

REVISIONS			
REV	DESCRIPTION	BY	DATE
A			

CUSTOMER COPY

CODE IDENT 22526




SHEET INDEX	ISSUE SH NO	MODEL	DO NOT SCALE DRAWING	TOLEANCE UNLESS OTHERWISE NOTED	INCH/MM	MATL	DR	DATE
				LINEAR	.001/.01/.01.3	///	M. CORNMAN	7/16/90
TABULATION SHEETS REQUIRED	YES	INCH MM	THIRD ANGLE PROJECTION	ANGLES 0°±2°	.0001/.005/.001.3	FINISH	ENGR	7/16/90
	NO				.0001/.0020/.0001.051	///	M. SMYK	7/16/90
							APPD	7/16/90

TITLE	HEADER, QUICKIE SEA HORSE, RIGHT ANGLE
SCALE	5/1
SIZE	D
DWG NO	67916
CAD	
SHEET	6

NOTE: This print is the property of and embodies proprietary designs of THE DUPONT COMPANY. No part of the design shown on this print may be used in any way without the written consent of DUPONT ELECTRONICS, Inc., Conshohocken, PA.

FORM L-3000E 01-72-89


PRODUCT NO	SIZE	LATCHES NOTE 9	PIN SHAPE	DIM A	DIM B	DIM C	DIM D	DIM E	TERMINAL PLATING	STYLE	REVISIONS				
											REV	DESCRIPTION	BY	DATE	
67916-145					UNAVAILABLE										
-146					UNAVAILABLE										
-147					UNAVAILABLE										
-148					UNAVAILABLE										
-149					UNAVAILABLE										
-150					UNAVAILABLE										
-151	2x7	LP	RND	1.460/37.08	1.600/41.24	.920/23.37	.105/2.67	1.06/26.92	30μ"/.76μ Au OVER 50μ"/1.27μ Ni	C					
-152	↑	↑	SO	↑	↑	↑	.105/2.67	↑	50μ"/3.81μ Sn	↑					
-153	↑	↑	RND	↑	↑	↑	.150/3.81	↑	30μ"/.76μ Au OVER 50μ"/1.27μ Ni	↑					
-154	↓	↓	SO	↓	↓	↓	.150/3.81	↓	150μ"/3.81μ Sn	↓					
-155	↓	↓	SO	↓	↓	↓	.675/17.15	↓	30μ"/.76μ Au OVER 50μ"/1.27μ Ni	↓					
-156	2x7		SO	1.460/37.08	1.600/41.24	.920/23.37	.675/17.15	1.06/26.92	50μ"/3.81μ Sn	C					
-157	2x8		RND	1.560/39.62	.700/17.78	.1020/25.91	.105/2.67	1.16/29.46	30μ"/.76μ Au OVER 50μ"/1.27μ Ni	D					
-158	↑	↑	SO	↑	↑	↑	.105/2.67	↑	150μ"/3.81μ Sn	↑					
-159	↑	↑	RND	↑	↑	↑	.150/3.81	↑	30μ"/.76μ Au OVER 50μ"/1.27μ Ni	↑					
-160	↓	↓	SO	↓	↓	↓	.150/3.81	↓	150μ"/3.81μ Sn	↓					
-161	↓	↓	SO	↓	↓	↓	.675/17.15	↓	30μ"/.76μ Au OVER 50μ"/1.27μ Ni	↓					
-162	2x8		SO	1.560/39.62	.700/17.78	.1020/25.91	.675/17.15	1.16/29.46	150μ"/3.81μ Sn						
-163	2x10		RND	1.760/44.70	.900/22.86	1.220/30.99	.105/2.67	1.36/34.54	30μ"/.76μ Au OVER 50μ"/1.27μ Ni						
-164	↑	↑	SO	↑	↑	↑	.105/2.67	↑	150μ"/3.81μ Sn						
-165	↑	↑	RND	↑	↑	↑	.150/3.81	↑	30μ"/.76μ Au OVER 50μ"/1.27μ Ni						
-166	↓	↓	SO	↓	↓	↓	.150/3.81	↓	150μ"/3.81μ Sn						
-167	↓	↓	SO	↓	↓	↓	.675/17.15	↓	30μ"/.76μ Au OVER 50μ"/1.27μ Ni						
-168	2x10		SO	1.760/44.70	.900/22.86	1.220/30.99	.675/17.15	1.36/34.54	50μ"/3.81μ Sn						
-169	2x13		RND	2.060/52.32	1.200/30.48	1.520/38.61	.105/2.67	1.56/42.16	30μ"/.76μ Au OVER 50μ"/1.27μ Ni						
-170	↑	↑	SO	↑	↑	↑	.105/2.67	↑	150μ"/3.81μ Sn						
-171	↑	↑	RND	↑	↑	↑	.150/3.81	↑	30μ"/.76μ Au OVER 50μ"/1.27μ Ni						
-172	↓	↓	SO	↓	↓	↓	.150/3.81	↓	150μ"/3.81μ Sn						
-173	↓	↓	SO	↓	↓	↓	.675/17.15	↓	30μ"/.76μ Au OVER 50μ"/1.27μ Ni						
-174	2x13		SO	2.060/52.32	1.200/30.48	1.520/38.61	.675/17.15	1.56/42.16	150μ"/3.81μ Sn						
-175	2x17		RND	2.460/62.48	1.600/40.64	1.920/48.77	.105/2.67	2.06/52.32	30μ"/.76μ Au OVER 50μ"/1.27μ Ni						
-176	↑	↑	SO	↑	↑	↑	.105/2.67	↑	150μ"/3.81μ Sn						
-177	↑	↑	RND	↑	↑	↑	.150/3.81	↑	30μ"/.76μ Au OVER 50μ"/1.27μ Ni						
-178	↓	↓	SO	↓	↓	↓	.150/3.81	↓	150μ"/3.81μ Sn						
-179	↓	↓	SO	↓	↓	↓	.675/17.15	↓	30μ"/.76μ Au OVER 50μ"/1.27μ Ni						
67916-180	2x17	LP	SO	2.460/62.48	1.600/40.64	1.920/48.77	.675/17.15	2.06/52.32	50μ"/3.81μ Sn	D					

CUSTOMER COPY	DuPont Electronics		
CODE IDENT 22526	TITLE HEADER, QUICKIE SEA-HORSE, RIGHT ANGLE		
DATE 7/16/90	DR M. CORNMAN	CHK M. SMYK	DATE 7/16/90
DATE 7/16/90	ENGR M. SMYK	APPD M. SMYK	DATE 7/16/90
SCALE 5/1	SIZE D	DWG NO 67916	SHEET 8

SHEET INDEX	ISSUE SH NO	DO NOT SCALE DRAWING		TOLERANCE UNLESS OTHERWISE NOTED	INCH/MM	MATL	DR	DATE
				LINEAR	.001/.005/.001/.3	///	M. CORNMAN	7/16/90
					.0001/.0020/.0001/.05	///	M. SMYK	7/16/90
TABULATION SHEETS REQUIRED	YES/NO	INCH MM	ANGLES	90° ± 30°				

NOTE: This print is the property of and contains proprietary designs of THE DUPONT COMPANY. No part of the design shown on this print may be used in any way without the written consent of DUPONT ELECTRONICS, Inc., Chester, PA.

PRODUCT NO	SIZE	LATCHES NOTE 9	PIN SHAPE	DIM A	DIM B	DIM C	DIM D	DIM E	TERMINAL PLATING	STYLE	REVISIONS				
											REV	DESCRIPTION	BY	DATE	
67916-181	2x20	LP	RND	2.760/70.10	1.900/48.26	2.220/56.39	.105/2.67	2.36/59.94	30μ"/.76μ Au OVER 50μ"/1.27μ Ni	D	A				
-182			SO				.105/2.67		150μ"/3.81μ Sn						
-183			RND				.150/3.81		30μ"/.76μ Au OVER 50μ"/1.27μ Ni						
-184			SO				.150/3.81		150μ"/3.81μ Sn						
-185			SO				.675/17.15		30μ"/.76μ Au OVER 50μ"/1.27μ Ni						
-186	2x20		SO	2.760/70.10	1.900/48.26	2.220/56.39	.675/17.15	2.36/59.94	150μ"/3.81μ Sn						
-187	2x25		RND	3.260/82.80	2.400/60.96	2.720/69.09	.105/2.67	2.86/72.64	30μ"/.76μ Au OVER 50μ"/1.27μ Ni						
-188			SO				.105/2.67		150μ"/3.81μ Sn						
-189			RND				.150/3.81		50μ"/.76μ Au OVER 50μ"/1.27μ Ni						
-190			SO				.150/3.81		150μ"/3.81μ Sn						
-191			SO				.675/17.15		30μ"/.76μ Au OVER 50μ"/1.27μ Ni						
-192	2x25		SO	3.260/82.80	2.400/60.96	2.720/69.09	.675/17.15	2.86/72.64	150μ"/3.81μ Sn						
-193	2x30		RND	3.760/95.50	2.900/73.66	3.220/81.79	.105/2.67	3.36/85.34	30μ"/.76μ Au OVER 50μ"/1.27μ Ni						
-194			SO				.105/2.67		150μ"/3.81μ Sn						
-195			RND				.150/3.81		30μ"/.76μ Au OVER 50μ"/1.27μ Ni						
-196			SO				.150/3.81		150μ"/3.81μ Sn						
-197			SO				.675/17.15		30μ"/.76μ Au OVER 50μ"/1.27μ Ni						
-198	2x30	LP	SO	3.760/95.50	2.900/73.66	3.220/81.79	.675/17.15	3.36/85.34	150μ"/3.81μ Sn	D					
-199				UNAVAILABLE											
-200	2x7	LP	SO	1.460/37.08	.600/15.24	.920/23.37	.105/2.67	1.06/26.92	30μ"/.76μ Au OVER 50μ"/1.27μ Ni	C					
-201	2x8			1.560/39.62	.700/17.78	1.020/25.91		1.16/29.46		D					
-202	2x0			1.760/44.70	.900/22.86	1.220/30.99		1.36/34.54							
-203	2x13			2.060/52.32	1.200/30.48	1.520/38.61		1.66/42.16							
-204	2x17			2.460/62.48	1.600/40.64	1.920/48.77		2.06/52.32							
-205	2x20			2.760/70.10	1.900/48.26	2.220/56.39		2.36/59.94							
-206	2x25			3.260/82.80	2.400/60.96	2.720/69.09		2.86/72.64							
-207	2x30	LP	SO	3.760/95.50	2.900/73.66	3.220/81.79	.105/2.67	3.36/85.34	30μ"/.76μ Au OVER 50μ"/1.27μ Ni	D					
-208				UNAVAILABLE											
-209	2x7	LP	RND	1.460/37.08	.600/15.24	.920/23.37	.150/3.81	1.06/26.92	30μ"/.76μ GXT/GOLD FLASH	C					
-210	2x8			1.560/39.62	.700/17.78	1.020/25.91		1.16/29.46		D					
-211	2x0			1.760/44.70	.900/22.86	1.220/30.99		1.36/34.54							
-212	2x13			2.060/52.32	1.200/30.48	1.520/38.61		1.66/42.16							
-213	2x17			2.460/62.48	1.600/40.64	1.920/48.77		2.06/52.32							
-214	2x20			2.760/70.10	1.900/48.26	2.220/56.39		2.36/59.94							
-215	2x25			3.260/82.80	2.400/60.96	2.720/69.09		2.86/72.64							
679 6-2-6	2x30	LP	RND	3.760/95.50	2.900/73.66	3.220/81.79	.150/3.81	3.36/85.34	30μ"/.76μ GXT/GOLD FLASH	D					

CUSTOMER COPY	DuPont Electronics		
CODE IDENT 22526	DATE 7/16/90	TITLE HEADER, QUICKIE SEA-HORSE, RIGHT ANGLE	
DR. M. COPPMAN	CHK. M. SMYK	SCALE 5/1	SIZE D
ENGR. M. SMYK	DATE 7/16/90	TWG NO. 679-6	CAD
APPD. M. SMYK	DATE 7/16/90	SHEET 9	

SHEET INDEX	ISSUE SH NO	TOLERANCE UNLESS OTHERWISE NOTED		MAIL	DR. M. COPPMAN	DATE 7/16/90
MODEL	1	100 NOT SCALE DRAWING	INCH/MM	///	CHK. M. SMYK	7/16/90
FABULATION SHEETS REQUIRED	1	LINEAR	.001, .01, .01-3	FINISH	ENGR. M. SMYK	7/16/90
		ANGLES	.0001, .0020, .001, .051	///	APPD. M. SMYK	7/16/90

NOTE: This print is the property of and contains proprietary designs of THE DUPONT COMPANY. No part of the design shown on this print may be used in any way without the written consent of DUPONT ELECTRONICS, Inc. COLUMBIA, PA.

FORM E (2004) REV. 12/79

PRODUCT NO	SIZE	LATCHES NOTE 9	PIN SHAPE	DIM A	DIM B	DIM C	DIM D	DIM E	TERMINAL PLATING	STYLE		
											REVISIONS	
UNAVAILABLE												
67916-217												
-218	2x7	NO	RND	1.460/37.08	.600/15.24	.920/23.37	.105/2.67	1.06/26.92	30μ"/.76μ GXT/GOLD FLASH	C		
-219	2x8			1.560/39.62	.700/17.78	1.020/25.91		1.16/29.46		D		
-220	2x10			1.760/44.70	.900/22.86	1.220/30.99		1.36/34.54				
-221	2x13			2.060/52.32	1.200/30.48	1.520/38.61		1.66/42.16				
-222	2x17			2.460/62.48	1.600/40.64	1.920/48.77		2.06/52.32				
-223	2x20			2.760/70.10	1.900/48.26	2.220/56.39		2.36/59.94				
-224	2x25			3.260/82.80	2.400/60.96	2.720/69.09		2.86/72.64				
-225	2x30	NO	RND	3.760/95.50	2.900/73.66	3.220/81.79	.105/2.67	3.36/85.34	30μ"/.76μ GXT/GOLD FLASH	D		
-226				UNAVAILABLE								
-227	2x7	NO	SG	1.460/37.08	.600/15.24	.920/23.37	.675/17.15	1.06/26.92	30μ"/.76μ GXT/GOLD FLASH	C		
-228	2x8			1.560/39.62	.700/17.78	1.020/25.91		1.16/29.46		D		
-229	2x10			1.760/44.70	.900/22.86	1.220/30.99		1.36/34.54				
-230	2x13			2.060/52.32	1.200/30.48	1.520/38.61		1.66/42.16				
-231	2x17			2.460/62.48	1.600/40.64	1.920/48.77		2.06/52.32				
-232	2x20			2.760/70.10	1.900/48.26	2.220/56.39		2.36/59.94				
-233	2x25			3.260/82.80	2.400/60.96	2.720/69.09		2.86/72.64				
-234	2x30	NO	SG	3.760/95.50	2.900/73.66	3.220/81.79	.675/17.15	3.36/85.34	30μ"/.76μ GXT/GOLD FLASH	D		
-235				UNAVAILABLE								
-236	2x7	STD	RND	1.460/37.08	.600/15.24	.920/23.37	.105/2.67	1.06/26.92	30μ"/.76μ GXT/GOLD FLASH	C		
-237	2x8			1.560/39.62	.700/17.78	1.020/25.91		1.16/29.46		D		
-238	2x10			1.760/44.70	.900/22.86	1.220/30.99		1.36/34.54				
-239	2x13			2.060/52.32	1.200/30.48	1.520/38.61		1.66/42.16				
-240	2x17			2.460/62.48	1.600/40.64	1.920/48.77		2.06/52.32				
-241	2x20			2.760/70.10	1.900/48.26	2.220/56.39		2.36/59.94				
-242	2x25			3.260/82.80	2.400/60.96	2.720/69.09		2.86/72.64				
-243	2x30	STD	RND	3.760/95.50	2.900/73.66	3.220/81.79	.105/2.67	3.36/85.34	30μ"/.76μ GXT/GOLD FLASH	D		
-244				UNAVAILABLE								
-245	2x7	STD	SG	1.460/37.08	.600/15.24	.920/23.37	.675/17.15	1.06/26.92	30μ"/.76μ GXT/GOLD FLASH	C		
-246	2x8			1.560/39.62	.700/17.78	1.020/25.91		1.16/29.46		D		
-247	2x10			1.760/44.70	.900/22.86	1.220/30.99		1.36/34.54				
-248	2x13			2.060/52.32	1.200/30.48	1.520/38.61		1.66/42.16				
-249	2x17			2.460/62.48	1.600/40.64	1.920/48.77		2.06/52.32				
-250	2x20			2.760/70.10	1.900/48.26	2.220/56.39		2.36/59.94				
-251	2x25			3.260/82.80	2.400/60.96	2.720/69.09		2.86/72.64				
67916-252	2x30	STD	SG	3.760/95.50	2.900/73.66	3.220/81.79	.675/17.15	3.36/85.34	30μ"/.76μ GXT/GOLD FLASH	D		

REVISIONS			
REV	DESCRIPTION	BY	DATE
A			

CUSTOMER COPY
CODE IDENT
22526





SHEET INDEX	ISSUE SH NO	DO NOT SCALE DRAWING		TOLERANCE UNLESS OTHERWISE NOTED	INCH/MM	MATL	DR	DATE	
				LINEAR	.001/.01/.015	///	M. CORNMAN	7/16/90	
TABULATION SHEETS REQUIRED	YES/NO	THIRD ANGLE PROJECTION		ANGLES	0°/2°	FINISH	ENGR	DATE	
						///	M. SMYK	7/16/90	
							APPD	M. SMYK	7/16/90
		SCALE		SIZE	DWG NO	CAD	SHEET		
		5/1		D	67916		10		

NOTE: This print is the property of and based on proprietary designs of THE DUPONT COMPANY. No part of the design shown on this print may be used in any way without the written consent of DUPONT ELECTRONICS, Inc., Columbia, PA.

FORM E (MAY 85) REV 1278

PRODUCT NO	SIZE	LATCHES NOTE 9	PIN SHAPE	DIM A	DIM B	DIM C	DIM D	DIM E	TERMINAL PLATING	STYLE	REVISIONS						
											REV	DESCRIPTION	BY	DATE			
67916-253				UNAVAILABLE								A					
-254	2x7	LP	RND	1.460/37.08	.600/15.24	.920/23.37	.105/2.67	1.06/26.92	30μ"/.76μ GXT/GOLD FLASH	C							
-255	2x8			1.560/39.62	.700/17.78	1.020/25.91		1.16/29.46		D							
-256	2x10			1.760/44.70	.900/22.86	1.220/30.99		1.36/34.54									
-257	2x13			2.060/52.32	1.200/30.48	1.520/38.61		1.66/42.16									
-258	2x17			2.460/62.48	1.600/40.64	1.920/48.77		2.06/52.32									
-259	2x20			2.760/70.10	1.900/48.26	2.220/56.39		2.36/59.94									
-260	2x25			3.260/82.80	2.400/60.96	2.720/69.09		2.86/72.64									
-261	2x30	LP	RND	3.760/95.50	2.900/73.66	3.220/81.79	.105/2.67	3.36/85.34	30μ"/.76μ GXT/GOLD FLASH	D							
-262				UNAVAILABLE													
-263	2x7	LP	SQ	1.460/37.08	.600/15.24	.920/23.37	.675/17.15	1.06/26.92	30μ"/.76μ GXT/GOLD FLASH	C							
-264	2x8			1.560/39.62	.700/17.78	1.020/25.91		1.16/29.46		D							
-265	2x10			1.760/44.70	.900/22.86	1.220/30.99		1.36/34.54									
-266	2x13			2.060/52.32	1.200/30.48	1.520/38.61		1.66/42.16									
-267	2x17			2.460/62.48	1.600/40.64	1.920/48.77		2.06/52.32									
-268	2x20			2.760/70.10	1.900/48.26	2.220/56.39		2.36/59.94									
-269	2x25			3.260/82.80	2.400/60.96	2.720/69.09		2.86/72.64									
-270	2x30	LP	SQ	3.760/95.50	2.900/73.66	3.220/81.79	.675/17.15	3.36/85.34	30μ"/.76μ GXT/GOLD FLASH	D							
-271				UNAVAILABLE													
-272	2x7	ND	RND	1.460/37.08	.600/15.24	.920/23.37	.105/2.67	1.06/26.92	15μ"/.38μ Au OVER 50μ"/1.27μ Ni	C							
-273	2x8			1.560/39.62	.700/17.78	1.020/25.91		1.16/29.46		D							
-274	2x10			1.760/44.70	.900/22.86	1.220/30.99		1.36/34.54									
-275	2x13			2.060/52.32	1.200/30.48	1.520/38.61		1.66/42.16									
-276	2x17			2.460/62.48	1.600/40.64	1.920/48.77		2.06/52.32									
-277	2x20			2.760/70.10	1.900/48.26	2.220/56.39		2.36/59.94									
-278	2x25			3.260/82.80	2.400/60.96	2.720/69.09		2.86/72.64									
-279	2x30	ND	RND	3.760/95.50	2.900/73.66	3.220/81.79	.105/2.67	3.36/85.34	15μ"/.38μ Au OVER 50μ"/1.27μ Ni	D							
-280				UNAVAILABLE													
-281	2x7	ND	RND	1.460/37.08	.600/15.24	.920/23.37	.150/3.81	1.06/26.92	15μ"/.38μ Au OVER 50μ"/1.27μ Ni	C							
-282	2x8			1.560/39.62	.700/17.78	1.020/25.91		1.16/29.46		D							
-283	2x10			1.760/44.70	.900/22.86	1.220/30.99		1.36/34.54									
-284	2x13			2.060/52.32	1.200/30.48	1.520/38.61		1.66/42.16									
-285	2x17			2.460/62.48	1.600/40.64	1.920/48.77		2.06/52.32									
-286	2x20			2.760/70.10	1.900/48.26	2.220/56.39		2.36/59.94									
-287	2x25			3.260/82.80	2.400/60.96	2.720/69.09		2.86/72.64									
67916-288	2x30	ND	RND	3.760/95.50	2.900/73.66	3.220/81.79	.150/3.81	3.36/85.34	15μ"/.38μ Au OVER 50μ"/1.27μ Ni	D							

CUSTOMER COPY	 
CODE IDENT 22526	
DATE 7/16/90	TITLE HEADER, QUICKIE SEA-HCRSE, RIGHT ANGLE
DR M. CORNMAN	SCALE 5/1
CHK M. SMYK	SIZE D
ENGR M. SMYK	DWG NO 67916
APPD M. SMYK	SHEET 13

SHEET INDEX	ISSUE SH NO	1
MODEL	DO NOT SCALE DRAWING	
TOLERANCE UNLESS OTHERWISE NOTED	INCH/MM	
LINEAR	.001, .01, .01, .3	
ANGLES	0° ± 2°	
MATL	///	
FINISH	///	
INSTR ANGLE PROJECTION	FIRST ANGLE PROJECTION	
TABULATION SHEETS REQUIRED	YES	NO

NOTE: This print is the property of and remains confidential design of THE DUPONT COMPANY. No part of the design shown on this print may be used in any way without the written consent of DUPONT ELECTRONICS, Inc. Columbia, PA.

PRODUCT NO	SIZE	LATCHES NOTE 9	PIN SHAPE	DIM A	DIM B	DIM C	DIM D	DIM E	TERMINAL PLATING	STYLE	REVISIONS				
											REV	DESCRIPTION	BY	DATE	
67916-289				UNAVAILABLE											
-290	2x7	ND	SQ	1.460/37.08	.600/15.24	.920/23.37	.675/17.15	1.06/26.92	15μ"/.38μ Au OVER 50μ"/1.27μ Ni	C					
-291	2x8			1.560/39.62	.700/17.78	1.020/25.91		1.16/29.46		D					
-292	2x10			1.760/44.70	.900/22.86	1.220/30.99		1.36/34.54							
-293	2x13			2.060/52.32	1.200/30.48	1.520/38.61		1.66/42.16							
-294	2x17			2.460/62.48	1.600/40.64	1.920/48.77		2.06/52.32							
-295	2x20			2.760/70.10	1.900/48.26	2.220/56.39		2.36/59.94							
-296	2x25			3.260/82.80	2.400/60.96	2.720/69.09		2.86/72.64							
-297	2x30	ND	SQ	3.760/95.50	2.900/73.66	3.220/81.79	.675/17.15	3.36/85.34	15μ"/.38μ Au OVER 50μ"/1.27μ Ni	D					
-298				UNAVAILABLE											
-299	2x7	STD	RND	1.460/37.08	.600/15.24	.920/23.37	.105/2.67	1.06/26.92	15μ"/.38μ Au OVER 50μ"/1.27μ Ni	C					
-300	2x8			1.560/39.62	.700/17.78	1.020/25.91		1.16/29.46		D					
-301	2x10			1.760/44.70	.900/22.86	1.220/30.99		1.36/34.54							
-302	2x13			2.060/52.32	1.200/30.48	1.520/38.61		1.66/42.16							
-303	2x17			2.460/62.48	1.600/40.64	1.920/48.77		2.06/52.32							
-304	2x20			2.760/70.10	1.900/48.26	2.220/56.39		2.36/59.94							
-305	2x25			3.260/82.80	2.400/60.96	2.720/69.09		2.86/72.64							
-306	2x30	STD	RND	3.760/95.50	2.900/73.66	3.220/81.79	.105/2.67	3.36/85.34	15μ"/.38μ Au OVER 50μ"/1.27μ Ni	D					
-307				UNAVAILABLE											
-308	2x7	STD	RND	1.460/37.08	.600/15.24	.920/23.37	.150/3.81	1.06/26.92	15μ"/.38μ Au OVER 50μ"/1.27μ Ni	C					
-309	2x8			1.560/39.62	.700/17.78	1.020/25.91		1.16/29.46		D					
-310	2x10			1.760/44.70	.900/22.86	1.220/30.99		1.36/34.54							
-311	2x13			2.060/52.32	1.200/30.48	1.520/38.61		1.66/42.16							
-312	2x17			2.460/62.48	1.600/40.64	1.920/48.77		2.06/52.32							
-313	2x20			2.760/70.10	1.900/48.26	2.220/56.39		2.36/59.94							
-314	2x25			3.260/82.80	2.400/60.96	2.720/69.09		2.86/72.64							
-315	2x30	STD	RND	3.760/95.50	2.900/73.66	3.220/81.79	.150/3.81	3.36/85.34	15μ"/.38μ Au OVER 50μ"/1.27μ Ni	D					
-316				UNAVAILABLE											
-317	2x7	STD	SQ	1.460/37.08	.600/15.24	.920/23.37	.675/17.15	1.06/26.92	15μ"/.38μ Au OVER 50μ"/1.27μ Ni	C					
-318	2x8			1.560/39.62	.700/17.78	1.020/25.91		1.16/29.46		D					
-319	2x10			1.760/44.70	.900/22.86	1.220/30.99		1.36/34.54							
-320	2x13			2.060/52.32	1.200/30.48	1.520/38.61		1.66/42.16							
-321	2x17			2.460/62.48	1.600/40.64	1.920/48.77		2.06/52.32							
-322	2x20			2.760/70.10	1.900/48.26	2.220/56.39		2.36/59.94							
-323	2x25			3.260/82.80	2.400/60.96	2.720/69.09		2.86/72.64							
67916-324	2x30	STD	SQ	3.760/95.50	2.900/73.66	3.220/81.79	.675/17.15	3.36/85.34	15μ"/.38μ Au OVER 50μ"/1.27μ Ni	D					

REVISIONS			
REV	DESCRIPTION	BY	DATE
A			

CUSTOMER COPY
CODE IDENT
22526



SHEET INDEX	ISSUE SH NO	1																		
MODEL		DO NOT SCALE DRAWING			TOLERANCE UNLESS OTHERWISE NOTED			INCH/MM		MATERIAL		DR		DATE						
								001.01/.013		///		M. CORNMAN		7/16/90						
								.0001-.005/.001-.3		FINISH		CHK		M. SMYK						
								.0000+.0020/-.000+.051				ENGR		7/16/90						
TABULATION SHEETS REQUIRED		YES			NO			INCH MM		ANGLES		APPD		M. SMYK						
								0° ± 2°				7/16/90								


TITLE
HEADER, QUICKIE
SEA-HORSE, RIGHT ANGLE
SCALE SIZE DWG NO
3/1 D 67916
SHEET 12

NOTE: This print is the property of and contains proprietary designs of THE DUPONT COMPANY. No part of the design shown on this print may be used in any way without the written consent of DUPONT ELECTRONICS, New Castle, PA.

PRODUCT NO	SIZE	LATCHES NOTE 9	PIN SHAPE	DIM A	DIM B	DIM C	DIM D	DIM E	TERMINAL PLATING	STYLE	
67916-325				UNAVAILABLE							
-326	2x7	LP	RND	1.460/37.08	.600/15.24	.920/23.37	.105/2.67	1.06/26.92	15μ"/.38μ Au OVER 50μ"/1.27μ Ni	C	
-327	2x8			1.560/39.62	.700/17.78	1.020/25.91		1.16/29.46		D	
-328	2x10			1.760/44.70	.900/22.86	1.220/30.99		1.36/34.54			
-329	2x13			2.060/52.32	1.200/30.48	1.520/38.61		1.66/42.16			
-330	2x17			2.460/62.48	1.600/40.64	1.920/48.77		2.06/52.32			
-331	2x20			2.760/70.10	1.900/48.26	2.220/56.39		2.36/59.94			
-332	2x25			3.260/82.80	2.400/60.96	2.720/69.09		2.86/72.64			
-333	2x30	LP	RND	3.760/95.50	2.900/73.66	3.220/81.79	.105/2.67	3.36/85.34	15μ"/.38μ Au OVER 50μ"/1.27μ Ni	D	
-334				UNAVAILABLE							
-335	2x7	LP	RND	1.460/37.08	.600/15.24	.920/23.37	.150/3.81	1.06/26.92	15μ"/.38μ Au OVER 50μ"/1.27μ Ni	C	
-336	2x8			1.560/39.62	.700/17.78	1.020/25.91		1.16/29.46		D	
-337	2x10			1.760/44.70	.900/22.86	1.220/30.99		1.36/34.54			
-338	2x13			2.060/52.32	1.200/30.48	1.520/38.61		1.66/42.16			
-339	2x17			2.460/62.48	1.600/40.64	1.920/48.77		2.06/52.32			
-340	2x20			2.760/70.10	1.900/48.26	2.220/56.39		2.36/59.94			
-341	2x25			3.260/82.80	2.400/60.96	2.720/69.09		2.86/72.64			
-342	2x30	LP	RND	3.760/95.50	2.900/73.66	3.220/81.79	.150/3.81	3.36/85.34	15μ"/.38μ Au OVER 50μ"/1.27μ Ni	D	
-343				UNAVAILABLE							
-344	2x7	LP	SO	1.460/37.08	.600/15.24	.920/23.37	.675/17.15	1.06/26.92	15μ"/.38μ Au OVER 50μ"/1.27μ Ni	C	
-345	2x8			1.560/39.62	.700/17.78	1.020/25.91		1.16/29.46		D	
-346	2x10			1.760/44.70	.900/22.86	1.220/30.99		1.36/34.54			
-347	2x13			2.060/52.32	1.200/30.48	1.520/38.61		1.66/42.16			
-348	2x17			2.460/62.48	1.600/40.64	1.920/48.77		2.06/52.32			
-349	2x20			2.760/70.10	1.900/48.26	2.220/56.39		2.36/59.94			
-350	2x25			3.260/82.80	2.400/60.96	2.720/69.09		2.86/72.64			
-351	2x30	LP	SO	3.760/95.50	2.900/73.66	3.220/81.79	.675/17.15	3.36/85.34	15μ"/.38μ Au OVER 50μ"/1.27μ Ni	D	
-352				UNAVAILABLE							
-353				UNAVAILABLE							
-354				UNAVAILABLE							
-355				UNAVAILABLE							
-356				UNAVAILABLE							
-357				UNAVAILABLE							
-358				UNAVAILABLE							
-359				UNAVAILABLE							
679 6-360				UNAVAILABLE							

REVISIONS			
REV	DESCRIPTION	BY	DATE
A			

SHEET INDEX		ISSUE	DATE	DR	M. CORRYAN	DATE	7/16/90
MODEL		DO NOT SCALE DRAWING	TOLERANCE UNLESS OTHERWISE NOTED	CHK	M. SMYK	DATE	7/16/90
FABULATION SHEETS REQUIRED		INCH	INCH/MM	FINISH	M. SMYK	DATE	7/16/90
		MM	INCH/MM	APPRO	M. SMYK	DATE	7/16/90

CUSTOMER COPY	CODE IDENT	22526
		
TITLE		
SEA HORSE, QUICKIE RIGHT ANGLE		
SCALE	SIZE	DWG NO
5/1	D	67916
SHEET	13	

NOTE: This price is the property of and applies to the designs of the DuPont Company. No part of the design shown on this price may be used in any way without the written consent of DUPONT ELECTRONICS, Inc. CONROBERT, PA.

PRODUCT NO	SIZE	LATCHES NOTE 9	PIN SHAPE	DIM A	DIM B	DIM C	DIM D	DIM E	TERMINAL PLATING	STYLE	REVISIONS		
											REV	DESCRIPTION	BY
67916-361									UNAVAILABLE				
-362	2x5	NO	RND	1.260/32.00	.400/10.16	.720/18.29	.105/2.67	.86/21.94	30μ"/.76μ Au OVER 50μ"/1.27μ Ni	B			
-363		NO	RND						15μ"/.38μ Au OVER 50μ"/1.27μ Ni				
-364		NO	RND						30μ"/.76μ GXT/GOLD FLASH				
-365		NO	SQ						150μ"/3.81μ Sn				
-366	STD	RND							30μ"/.76μ Au OVER 50μ"/1.27μ Ni				
-367	STD	RND							15μ"/.38μ Au OVER 50μ"/1.27μ Ni				
-368	STD	RND							30μ"/.76μ GXT/GOLD FLASH				
-369	STD	SQ							150μ"/3.81μ Sn				
-370	LP	RND							30μ"/.76μ Au OVER 50μ"/1.27μ Ni				
-371	LP	RND							15μ"/.38μ Au OVER 50μ"/1.27μ Ni				
-372	LP	RND							30μ"/.76μ GXT/GOLD FLASH				
-373	LP	SQ					.105/2.67		150μ"/3.81μ Sn				
-374	NO	RND					.150/3.81		30μ"/.76μ Au OVER 50μ"/1.27μ Ni				
-375	NO	RND							15μ"/.38μ Au OVER 50μ"/1.27μ Ni				
-376	NO	RND							30μ"/.76μ GXT/GOLD FLASH				
-377	NO	SQ							150μ"/3.81μ Sn				
-378	STD	RND							30μ"/.76μ Au OVER 50μ"/1.27μ Ni				
-379	STD	RND							15μ"/.38μ Au OVER 50μ"/1.27μ Ni				
-380	STD	RND							30μ"/.76μ GXT/GOLD FLASH				
-381	STD	SQ							150μ"/3.81μ Sn				
-382	LP	RND							30μ"/.76μ Au OVER 50μ"/1.27μ Ni				
-383	LP	RND							15μ"/.38μ Au OVER 50μ"/1.27μ Ni				
-384	LP	RND							30μ"/.76μ GXT/GOLD FLASH				
-385	LP	SQ					.150/3.81		150μ"/3.81μ Sn				
-386	NO	SQ					.675/17.15		30μ"/.76μ Au OVER 50μ"/1.27μ Ni				
-387	NO								15μ"/.38μ Au OVER 50μ"/1.27μ Ni				
-388	NO								30μ"/.76μ GXT/GOLD FLASH				
-389	NO								150μ"/3.81μ Sn				
-390	STD								30μ"/.76μ Au OVER 50μ"/1.27μ Ni				
-391	STD								15μ"/.38μ Au OVER 50μ"/1.27μ Ni				
-392	STD								30μ"/.76μ GXT/GOLD FLASH				
-393	STD								150μ"/3.81μ Sn				
-394	LP								30μ"/.76μ Au OVER 50μ"/1.27μ Ni				
-395	LP								15μ"/.38μ Au OVER 50μ"/1.27μ Ni				
67916-396	2x5	LP	SQ	1.260/32.00	.400/10.16	.720/18.29	.675/17.15	.86/21.84	30μ"/.76μ GXT/GOLD FLASH	B			

REVISIONS			
REV	DESCRIPTION	BY	DATE
A			

CUSTOMER COPY



CODE IDENT
22526

TITLE HEADER, QUICKIE
SEA HORSE, RIGHT ANGLE
SCALE SIZE DWG NO
5/ D 67916
SHEET 14

SHEET INDEX	ISSUE SH NO	MODEL	DO NOT SCALE DRAWING	TOLERANCE UNLESS OTHERWISE NOTED	INCH/MM	MATL	DR	DATE
						///	M. CORNMAN	7/16/90
							CHK	M. SMYK 7/16/90
							ENGR	M. SMYK 7/16/90
							APPD	M. SMYK 7/16/90
FABULATION	YES	INCH	MM	ANGLES	0° x 2°			
SHEETS REQUIRED	NO							

NOTE: This print is the property of and embodies proprietary designs of THE DUPONT COMPANY. No part of the design shown on this print may be used in any way without the written consent of DUPONT ELECTRONICS, New Castle, PA.

FORM E-3000 REV 12/89

PRODUCT NO	SIZE	LATCHES NOTE 9	PIN SHAPE	DIM A	DIM B	DIM C	DIM D	DIM E	TERMINAL PLATING	STYLE	
67916-397	2x5	LP	SD	1.260/32.00	.400/10.16	.720/18.29	.675/17.15	.86/21.84	150μ"/3.81μ Sn	B	
-398	2x10	66258-001	RND	1.760/44.70	.900/22.86	1.220/30.99	.105/2.67	1.36/34.54	30μ"/.76μ Au OVER 50μ"/1.27μ Ni	D	
-399				UNAVAILABLE							
-400											
-401											
-402											
-403											
-404				UNAVAILABLE							
-405	2x5	NO	SD	1.260/32.00	.400/10.16	.720/18.29	.105/2.67	.86/21.84	15μ"/.38μ Au OVER 50μ"/1.27μ Ni	B	
-406		STD					.105/2.67				
-407		LP					.105/2.67				
-408		NO					.150/3.81				
-409		STD					.150/3.81				
-410	2x5	LP		1.260/32.00	.400/10.16	.720/18.29	.150/3.81	.86/21.84		B	
-411	2x7	NO		1.460/37.08	.600/15.24	.920/23.37	.105/2.67	1.06/26.92		C	
-412		STD					.105/2.67				
-413		LP					.105/2.67				
-414		NO					.150/3.81				
-415		STD					.150/3.81				
-416	2x7	LP		1.460/37.08	.600/15.24	.920/23.37	.150/3.81	1.06/26.92		C	
-417	2x8	NO		1.560/39.62	.700/17.78	1.020/25.91	.105/2.67	1.16/29.46		D	
-418		STD					.105/2.67				
-419		LP					.105/2.67				
-420		NO					.150/3.81				
-421		STD					.150/3.81				
-422	2x8	LP		1.560/39.62	.700/17.78	1.020/25.91	.150/3.81	1.16/29.46			
-423	2x10	NO		1.760/44.70	.900/22.86	1.220/30.99	.105/2.67	1.36/34.54			
-424		STD					.105/2.67				
-425		LP					.105/2.67				
-426		NO					.150/3.81				
-427		STD					.150/3.81				
-428	2x10	LP		1.760/44.70	.900/22.86	1.220/30.99	.150/3.81	1.36/34.54			
-429	2x13	NO		2.060/52.32	1.200/30.48	1.520/38.61	.105/2.67	1.66/42.16			
-430		STD					.105/2.67				
-431		LP					.105/2.67				
67916-432	2x13	NO	SD	2.060/52.32	1.200/30.48	1.520/38.61	.150/3.81	1.66/42.16	15μ"/.38μ Au OVER 50μ"/1.27μ Ni	D	

REVISIONS			
REV	DESCRIPTION	BY	DATE
A			

CUSTOMER COPY




CODE IDENT 22526

TITLE HEADER, QUICKIE SEA-HORSE, RIGHT ANGLE
SCALE SIZE DWG NO CAD SHEET 15

SHEET INDEX	ISSUE SH NO	DO NOT SCALE DRAWING	TOLERANCE UNLESS OTHERWISE NOTED INCH/MM	MATL	DR	DATE
			LINEAR .001/.01/.03	///	M. CORNMAN	7/16/90
			ANGLES 0°/12°	///	ENGR M. SMYK	7/16/90
TABULATION SHEETS REQUIRED	YES/NO	INCH/MM			APPD M. SMYK	7/16/90

NOTE: This print is the property of and contains proprietary designs of THE DUPONT COMPANY. No part of the design shown on this print may be used in any way without the written consent of DUPONT ELECTRONICS, Inc., Columbia, PA.

PRODUCT NO	SIZE	LATCHES NOTE 9	PIN SHAPE	DIM A	DIM B	DIM C	DIM D	DIM E	TERMINAL PLATING	STYLE	REVISIONS			
											REV	DESCRIPTION	BY	DATE
67916-433	2x13	STD	SQ	2.060/52.32	1.200/30.48	1.520/38.61	.150/3.81	1.66/42.16	15μ"/.38μ Au OVER 50μ"/1.27μ Ni	D	A			
-434	2x13	LP		2.060/52.32	1.200/30.48	1.520/38.61	.150/3.81	1.66/42.16						
-435	2x17	NO		2.460/62.48	1.600/40.64	1.920/48.77	.105/2.67	2.06/52.32						
-436		STD					.105/2.67							
-437		LP					.105/2.67							
-438		NO					.150/3.81							
-439		STD					.150/3.81							
-440	2x17	LP		2.460/62.48	1.600/40.64	1.920/48.77	.150/3.81	2.06/52.32						
-441	2x20	NO		2.760/70.10	1.900/48.26	2.220/56.39	.105/2.67	2.36/59.94						
-442		STD					.105/2.67							
-443		LP					.105/2.67							
-444		NO					.150/3.81							
-445		STD					.150/3.81							
-446	2x20	LP		2.760/70.10	1.900/48.26	2.220/56.39	.150/3.81	2.36/59.94						
-447	2x25	NO		3.260/82.80	2.400/60.96	2.720/69.39	.105/2.67	2.86/72.64						
-448		STD					.105/2.67							
-449		LP					.105/2.67							
-450		NO					.150/3.81							
-451		STD					.150/3.81							
-452	2x25	LP		3.260/82.80	2.400/60.96	2.720/69.39	.150/3.81	2.86/72.64						
-453	2x30	NO		3.760/95.50	2.900/73.66	3.220/81.79	.105/2.67	3.36/85.34						
-454		STD					.105/2.67							
-455		LP					.105/2.67							
-456		NO					.150/3.81							
-457		STD					.150/3.81							
-458	2x30	LP	SQ	3.760/95.50	2.900/73.66	3.220/81.79	.150/3.81	3.36/85.34						
-459	2x12	NO	RND	1.960/49.80	1.100/27.94	1.420/36.07	.105/2.67	1.56/39.62						
-460		STD												
-461		LP							15μ"/.38μ Au OVER 50μ"/1.27μ Ni					
-462		NO							30μ"/.76μ Au OVER 50μ"/1.27μ Ni					
-463		STD							30μ"/.76μ Au OVER 50μ"/1.27μ Ni					
-464		LP							30μ"/.76μ Au OVER 50μ"/1.27μ Ni					
-465		NO							30μ"/.76μ GXT/GOLD FLASH					
-466		STD							30μ"/.76μ GXT/GOLD FLASH					
-467		LP	RND						30μ"/.76μ GXT/GOLD FLASH					
67916-468	2x12	NO	SQ	1.960/49.80	1.100/27.94	1.420/36.07	.105/2.67	1.56/39.62	150μ"/3.81μ FIN	D				

CUSTOMER COPY	DATE	7/16/90
CODE IDENT	22526	
DuPont Electronics		
		
DR	M. CORNMAN	
CHK	M. SMYK	7/16/90
ENGR	M. SMYK	7/16/90
APPD	M. SMYK	7/16/90
TITLE	HEADER, QUICKIE SEA-HORSE, RIGHT ANGLE	
SCALE	SIZE	DWG NO
5/1	D	67916
SHEET	16	

SHEET INDEX	ISSUE	SM NO	
MODEL	DO NOT SCALE DRAWING		
TOLERANCE UNLESS OTHERWISE NOTED	INCH/MM		
LINEAR	.001+.01/.013		
ANGLES	.0005+.0020/.0005+.051		
MATL	///		
FINISH	///		
TABULATION SHEETS REQUIRED	YES	NO	

NOTE: This print is the property of and contains proprietary designs of THE DUPONT COMPANY. No part of the design shown on this print may be used in any way without the written consent of DUPONT ELECTRONICS, Inc., Columbia, PA.

FORM 1 (Rev. 10/79)

PRODUCT NO	SIZE	LATCHES NOTE 9	PIN SHAPE	DIM A	DIM B	DIM C	DIM D	DIM E	TERMINAL PLATING	STYLE
67916-469	2x12	STD	SQ	1.960/49.80	1.100/27.94	1.420/36.07	.105/2.67	1.56/39.62	150μ"/3.81μ T1N	D
-470		LP	SQ				.105/2.67		150μ"/3.81μ T1N	
-471		NO	RND				.150/3.81		15μ"/.38μ Au OVER 50μ"/1.27μ Nt	
-472		STD							15μ"/.38μ Au OVER 50μ"/1.27μ Nt	
-473		LP							15μ"/.38μ Au OVER 50μ"/1.27μ Nt	
-474		NO							30μ"/.76μ Au OVER 50μ"/1.27μ Nt	
-475		STD							30μ"/.76μ Au OVER 50μ"/1.27μ Nt	
-476		LP							30μ"/.76μ Au OVER 50μ"/1.27μ Nt	
-477		NO							30μ"/.76μ GXT/GOLD FLASH	
-478		STD							30μ"/.76μ GXT/GOLD FLASH	
-479		LP	RND						30μ"/.76μ GXT/GOLD FLASH	
-480		NO	SQ						150μ"/3.81μ T1N	
-481		STD							150μ"/3.81μ T1N	
-482		LP					.150/3.81		150μ"/3.81μ T1N	
-483		NO					.105/2.67		15μ"/.38μ Au OVER 50μ"/1.27μ Nt	
-484		STD							15μ"/.38μ Au OVER 50μ"/1.27μ Nt	
-485		LP							15μ"/.38μ Au OVER 50μ"/1.27μ Nt	
-486		NO							30μ"/.76μ Au OVER 50μ"/1.27μ Nt	
-487		STD					.105/2.67		30μ"/.76μ Au OVER 50μ"/1.27μ Nt	
-488		LP					.150/3.81		30μ"/.76μ Au OVER 50μ"/1.27μ Nt	
-489		NO					.150/3.81		15μ"/.38μ Au OVER 50μ"/1.27μ Nt	
-490		STD					.150/3.81		15μ"/.38μ Au OVER 50μ"/1.27μ Nt	
-491		LP					.675/17.15		15μ"/.38μ Au OVER 50μ"/1.27μ Nt	
-492		NO							15μ"/.38μ Au OVER 50μ"/1.27μ Nt	
-493		STD							15μ"/.38μ Au OVER 50μ"/1.27μ Nt	
-494		LP							15μ"/.38μ Au OVER 50μ"/1.27μ Nt	
-495		NO							30μ"/.76μ Au OVER 50μ"/1.27μ Nt	
-496		STD							30μ"/.76μ Au OVER 50μ"/1.27μ Nt	
-497		LP							30μ"/.76μ Au OVER 50μ"/1.27μ Nt	
-498		NO							30μ"/.76μ GXT/GOLD FLASH	
-499		STD							30μ"/.76μ GXT/GOLD FLASH	
-500		LP							30μ"/.76μ GXT/GOLD FLASH	
-501		NO							150μ"/3.81μ T1N	
-502		STD							150μ"/3.81μ T1N	
-503	2x12	LP	SQ	1.960/49.80	1.100/27.94	1.420/36.07	.675/17.15	1.56/39.62	150μ"/3.81μ T1N	
67916-504	2x15	NO	RND	2.260/57.40	1.400/35.56	1.720/43.69	.105/2.67	1.86/47.24	5μ"/.38μ Au OVER 50μ"/1.27μ Nt	D

REVISIONS			
REV	DESCRIPTION	BY	DATE
A			

CUSTOMER COPY



SHEET INDEX	ISSUE SH NO	DO NOT SCALE DRAWING		TOLERANCE UNLESS OTHERWISE NOTED	INCH/MM	MATL	DR	DATE
				LINEAR	.001/.01/.03	///	M. CORNMAN	7/16/90
				ANGLES	.0001/.0020/.001.051	///	CHK M. SMYK	7/16/90
TABULATION SHEETS REQUIRED	YES	INCH MM					ENGR M. SMYK	7/ 6/90
	NO						APPD M. SMYK	7/ 6/90

TITLE			
HEADER, QUICKIE SEA HORSE, RIGHT ANGLE			
SCALE	SIZE	CWG NO	EAD
5/1	D	67916	
SHEET			17

NOTE: This print is the property of and used as proprietary designs of THE DUPONT COMPANY. No part of the design shown on this print may be used in any way without the written consent of DUPONT ELECTRONICS, Inc. Columbia, PA.

FORM E. 3-84 REV. 12-79

PRODUCT NO	SIZE	LATCHES NOTE 9	PIN SHAPE	DIM A	DIM B	DIM C	DIM D	DIM E	TERMINAL PLATING	STYLE
67916-505	2x15	STD	RND	2.260/57.40	1.400/35.56	1.720/43.69	.105/2.67	1.86/47.24	15μ"/.38μ Au OVER 50μ"/1.27μ Ni	D
-506		LP							15μ"/.38μ Au OVER 50μ"/1.27μ Ni	
-507		NO							30μ"/.76μ Au OVER 50μ"/1.27μ Ni	
-508		STD							30μ"/.76μ Au OVER 50μ"/1.27μ Ni	
-509		LP							30μ"/.76μ Au OVER 50μ"/1.27μ Ni	
-510		NO							30μ"/.76μ GXT/GOLD FLASH	
-511		STD							30μ"/.76μ GXT/GOLD FLASH	
-512		LP	RND						30μ"/.76μ GXT/GOLD FLASH	
-513		NO	SQ						150μ"/3.81μ TIN	
-514		STD	SQ						150μ"/3.81μ TIN	
-515		LP	SQ				.105/2.67		150μ"/3.81μ TIN	
-516		NO	RND				.150/3.81		15μ"/.38μ Au OVER 50μ"/1.27μ Ni	
-517		STD							15μ"/.38μ Au OVER 50μ"/1.27μ Ni	
-518		LP							15μ"/.38μ Au OVER 50μ"/1.27μ Ni	
-519		NO							30μ"/.76μ Au OVER 50μ"/1.27μ Ni	
-520		STD							30μ"/.76μ Au OVER 50μ"/1.27μ Ni	
-521		LP							30μ"/.76μ Au OVER 50μ"/1.27μ Ni	
-522		NO							30μ"/.76μ GXT/GOLD FLASH	
-523		STD							30μ"/.76μ GXT/GOLD FLASH	
-524		LP	RND						30μ"/.76μ GXT/GOLD FLASH	
-525		NO	SQ						150μ"/3.81μ TIN	
-526		STD							150μ"/3.81μ TIN	
-527		LP					.150/3.81		150μ"/3.81μ TIN	
-528		NO					.105/2.67		15μ"/.38μ Au OVER 50μ"/1.27μ Ni	
-529		STD							15μ"/.38μ Au OVER 50μ"/1.27μ Ni	
-530		LP							15μ"/.38μ Au OVER 50μ"/1.27μ Ni	
-531		NO							30μ"/.76μ Au OVER 50μ"/1.27μ Ni	
-532		STD							30μ"/.76μ Au OVER 50μ"/1.27μ Ni	
-533		LP					.105/2.67		30μ"/.76μ Au OVER 50μ"/1.27μ Ni	
-534		NO					.150/3.81		15μ"/.38μ Au OVER 50μ"/1.27μ Ni	
-535		STD					.150/3.81		15μ"/.38μ Au OVER 50μ"/1.27μ Ni	
-536		LP					.150/3.81		15μ"/.38μ Au OVER 50μ"/1.27μ Ni	
-537		NO					.675/17.15		15μ"/.38μ Au OVER 50μ"/1.27μ Ni	
-538		STD							15μ"/.38μ Au OVER 50μ"/1.27μ Ni	
-539		LP							15μ"/.38μ Au OVER 50μ"/1.27μ Ni	
67916-540	2x15	NO	SQ	2.260/57.40	1.400/35.56	1.720/43.69	.675/17.15	1.86/47.24	30μ"/.76μ Au OVER 50μ"/1.27μ Ni	D

REVISIONS			
REV	DESCRIPTION	BY	DATE
A			

CUSTOMER COPY



CODE IDENT
22526

TITLE HEADER, QUICKIE
SEA-HORSE, RIGHT ANGLE

SCALE SIZE DWG NO
5/1 D 67916

CAD SHEET 18


SHEET INDEX	ISSUE SH NO	DO NOT SCALE DRAWING	TOLERANCE UNLESS OTHERWISE NOTED	INCH/MM	MATL	DR	DATE
			LINEAR	.001, .01, .013 .0001, .005, .001, .1 .0001, .0020, .0001, .051	///	M. CORNMAN	7/15/90
TABULATION SHEETS REQUIRED	YES/NO	INCH/MM	ANGLES	0° ±2°	FINISH	ENGR	7/16/90
					///	M. SMYK	7/16/90

NOTE: This print is the property of and contains proprietary designs of THE DUPONT COMPANY. No part of the design shown on this print may be used in any way without the written consent of DUPONT ELECTRONICS, Inc. Columbia, PA.

FORM E-130000 REV. 7/89

PRODUCT NO	SIZE	LATCHES NOTE 9	PIN SHAPE	DIM A	DIM B	DIM C	DIM D	DIM E	TERMINAL PLATING	STYLE
67916-541	2x15	STD	SO	2.260/57.40	1.400/35.56	1.720/43.69	.675/17.15	1.86/47.24	30μ"/.76μ Au OVER 50μ"/1.27μ Ni	D
-542		LP							30μ"/.76μ Au OVER 50μ"/1.27μ Ni	
-543		NO							30μ"/.76μ GXT/GOLD FLASH	
-544		STD							30μ"/.76μ GXT/GOLD FLASH	
-545		LP							30μ"/.76μ GXT/GOLD FLASH	
-546		NO							150μ"/3.81μ TIN	
-547		STD							150μ"/3.81μ TIN	
-548	2x15	LP	SO	2.260/57.40	1.400/35.56	1.720/43.69	.675/17.15	1.86/47.24	150μ"/3.81μ Au OVER 50μ"/1.27μ Ni	
-549	2x22	NO	RND	2.960/75.20	2.100/53.34	2.420/61.47	.105/2.67	2.56/65.02	15μ"/.38μ Au OVER 50μ"/1.27μ Ni	
-550		STD							15μ"/.38μ Au OVER 50μ"/1.27μ Ni	
-551		LP							30μ"/.76μ Au OVER 50μ"/1.27μ Ni	
-552		NO							30μ"/.76μ Au OVER 50μ"/1.27μ Ni	
-553		STD							30μ"/.76μ Au OVER 50μ"/1.27μ Ni	
-554		LP							30μ"/.76μ Au OVER 50μ"/1.27μ Ni	
-555		NO							30μ"/.76μ GXT/GOLD FLASH	
-556		STD							30μ"/.76μ GXT/GOLD FLASH	
-557		LP	RND						30μ"/.76μ GXT/GOLD FLASH	
-558		NO	SO						150μ"/3.81μ TIN	
-559		STD	SO						150μ"/3.81μ TIN	
-560		LP	SO				.105/2.67		150μ"/3.81μ TIN	
-561		NO	RND				.150/3.81		15μ"/.38μ Au OVER 50μ"/1.27μ Ni	
-562		STD							15μ"/.38μ Au OVER 50μ"/1.27μ Ni	
-563		LP							15μ"/.38μ Au OVER 50μ"/1.27μ Ni	
-564		NO							30μ"/.76μ Au OVER 50μ"/1.27μ Ni	
-565		STD							30μ"/.76μ Au OVER 50μ"/1.27μ Ni	
-566		LP							30μ"/.76μ Au OVER 50μ"/1.27μ Ni	
-567		NO							30μ"/.76μ GXT/GOLD FLASH	
-568		STD							30μ"/.76μ GXT/GOLD FLASH	
-569		LP	RND						30μ"/.76μ GXT/GOLD FLASH	
-570		NO	SO						150μ"/3.81μ TIN	
-571		STD							150μ"/3.81μ TIN	
-572		LP					.150/3.81		150μ"/3.81μ TIN	
-573		NO					.105/2.67		15μ"/.38μ Au OVER 50μ"/1.27μ Ni	
-574		STD							15μ"/.38μ Au OVER 50μ"/1.27μ Ni	
-575		LP							15μ"/.38μ Au OVER 50μ"/1.27μ Ni	
67916-576	2x22	NO	SO	2.960/75.20	2.100/53.34	2.420/61.47	.105/2.67	2.56/65.02	30μ"/.76μ Au OVER 50μ"/1.27μ Ni	D

REVISIONS			
REV	DESCRIPTION	BY	DATE
A			

CUSTOMER COPY		CODE IDENT 22526	
DuPont Electronics			
DR M. CORNMAN	DATE 7/16/90	TITLE HEADER, QUICKIE SEA HORSE, RIGHT ANGLE	
CHK M. SMYK	7/16/90	SCALE SIZE DWG NO CAD	
ENGR M. SMYK	7/16/90	5/1 D	67916 SHEET 19
APPD M. SMYK	7/16/90		

SHEET INDEX	ISSUE CH NO	DO NOT SCALE DRAWING		TOLE RANCE UNLESS OTHERWISE NOTED	INCH/MM	WATL	DR M. CORNMAN	DATE 7/16/90
				LINEAR	.001, .01, .013	///	CHK M. SMYK	7/16/90
				ANGLES	.0001, .0020, .001, .05	///	ENGR M. SMYK	7/16/90
TABULATION SHEETS REQUIRED	YES NO	INCH MM					APPD M. SMYK	7/16/90

NOTE: This print is the property of and contains proprietary designs of THE DUPONT COMPANY. No part of the design shown on this print may be used in any way without the written consent of DUPONT ELECTRONICS, Inc., Columbia, PA.

FORM 13-3046-REV. 12/89

PRODUCT NO	SIZE	LATCHES NOTE 9	PIN SHAPE	DIM A	DIM B	DIM C	DIM D	DIM E	TERMINAL PLATING	STYLE	
67916-577	2x22	STD	SQ	2.960/75.18	2.100/53.34	2.420/61.47	.105/2.67	2.56/65.02	30μ"/.76μ Au OVER 50μ"/1.27μ Ni	D	
-578		LP					.105/2.67		30μ"/.76μ Au OVER 50μ"/1.27μ Ni		
-579		NO					.150/3.81		15μ"/.38μ Au OVER 50μ"/1.27μ Ni		
-580		STD					.150/3.81		15μ"/.38μ Au OVER 50μ"/1.27μ Ni		
-581		LP					.150/3.81		15μ"/.38μ Au OVER 50μ"/1.27μ Ni		
-582		NO					.675/17.15		15μ"/.38μ Au OVER 50μ"/1.27μ Ni		
-583		STD							15μ"/.38μ Au OVER 50μ"/1.27μ Ni		
-584		LP							15μ"/.38μ Au OVER 50μ"/1.27μ Ni		
-585		NO							30μ"/.76μ Au OVER 50μ"/1.27μ Ni		
-586		STD							30μ"/.76μ Au OVER 50μ"/1.27μ Ni		
-587		LP							30μ"/.76μ Au OVER 50μ"/1.27μ Ni		
-588		NO							30μ"/.76μ GXT/GOLD FLASH		
-589		STD							30μ"/.76μ GXT/GOLD FLASH		
-590		LP							30μ"/.76μ GXT/GOLD FLASH		
-591		NO							150μ"/3.81μ Sn-Pb		
-592		STD							150μ"/3.81μ Sn-Pb		
-593	2x22	LP	SQ	2.960/75.18	2.100/53.34	2.420/61.47	.675/17.15	2.56/65.02	150μ"/3.81μ Sn-Pb	D	
-594	UNAVAILABLE										
-595	2x13	STD	RND	2.060/52.32	1.200/30.48	1.520/38.61	.105/2.67	1.66/42.2	50μ"/1.27μ Au OVER 50μ"/1.27μ Ni	D	
-596	2x17	STD		2.460/62.48	1.600/40.64	1.920/48.77	.150/3.81	2.06/53.3		D	
-597	2x7	LP		1.460/37.08	.600/15.24	.920/23.67	.105/2.67	1.06/26.9		C	
-598	2x13	LP		2.060/52.32	1.200/30.48	1.520/38.61	.150/3.81	1.66/42.2		D	
-599	2x13	NO		2.060/52.32	1.200/30.48	1.520/38.61	.105/2.67	1.66/42.2		D	
-600	2x17	NO		2.460/62.48	1.600/40.64	1.920/48.77	.150/3.81	2.06/53.3		D	
-601	2x7	NO		1.460/37.08	.600/15.24	.920/23.67	.105/2.67	1.06/26.9		C	
-602	2x13	NO	RND	2.060/52.32	1.200/30.48	1.520/38.61	.150/3.81	1.66/42.2	50μ"/1.27μ Au OVER 50μ"/1.27μ Ni	D	
-603	2x13	STD	SQ	2.060/52.32	1.200/30.48	1.520/38.61	.105/2.67	1.66/42.2	30μ"/.76μ GXT/GOLD FLASH	D	
-604	2x13	NO	SQ	2.060/52.32	1.200/30.48	1.520/38.61	.105/2.67	1.66/42.2	30μ"/.76μ GXT/GOLD FLASH	D	
-605	2x25	STD	SQ	3.260/82.80	2.400/60.69	2.720/69.09	.105/2.67	2.86/72.6	30μ"/.76μ GXT/GOLD FLASH	D	
-606	2x25	NO	SQ	3.260/82.80	2.400/60.69	2.720/69.09	.105/2.67	2.86/72.6	30μ"/.76μ GXT/GOLD FLASH	D	
-607	UNAVAILABLE										
67916-608	UNAVAILABLE										

REVISIONS			
REV	DESCRIPTION	BY	DATE
A			

SHEET INDEX		ISSUE	CUSTOMER COPY		CODE IDENT		DATE	
54		NO	22526		7/16/90		7/16/90	
MODEL			TOLERANCE UNLESS OTHERWISE NOTED		MATERIAL		DRAWN BY	
I			INCH/MM		--		M. CORNMAN	
DO NOT SCALE DRAWING			.001/.01/.013		FINISH		CHECKED BY	
THIRD ANGLE PROJECTION			LINEAR		--		M. SMYK	
TABULATION SHEETS REQUIRED			.0001/.005/.001/.051		APPROVED BY		7/16/90	
YES/NO			INCH/MM		M. SMYK		7/16/90	
			ANGLES 0°±2°		SCALE		SIZE	
					5/1 D		DWG NO	
					67916		CAD	
					SHEET		20	



HEADER, QUICKIE
SEA-HORSE, RIGHT ANGLE

NOTE: This print is the property of and contains proprietary designs of THE DUPONT COMPANY. No part of the design shown on this print may be used in any way without the written consent of DUPONT ELECTRONICS, Inc. See Drawing 24.

FORM E (3-88) REV. 12-79