

SPECIFICATIONS

Mechanical

Mating Force: 0.142Kgf max. per contact pair
Unmating Force: 0.017Kgf min. per contact pair
Contact Retention Force: 0.91Kgf min per contact.

Electrical

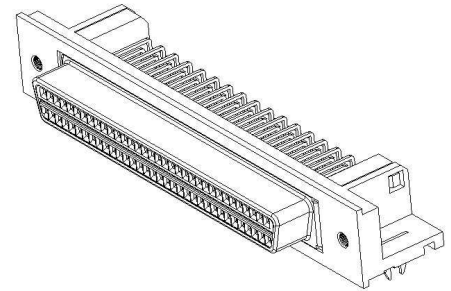
Current Rating: 1.0A
Contact Resistance: 35mΩ max.
Dielectric Withstanding Voltage: 500V /1min.
Insulation Resistance: 1000MΩ min, initial.

Physical

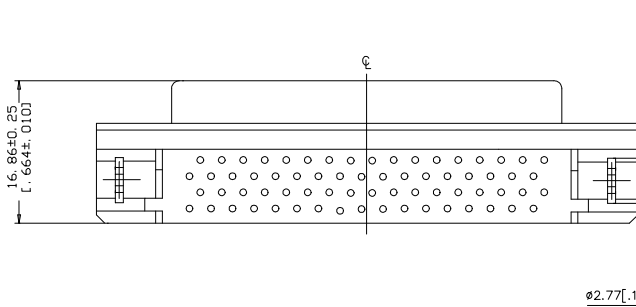
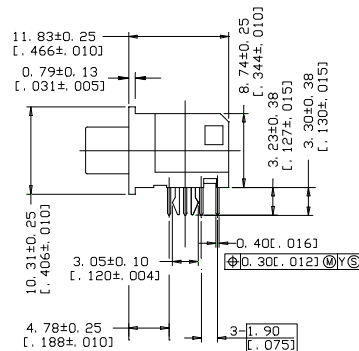
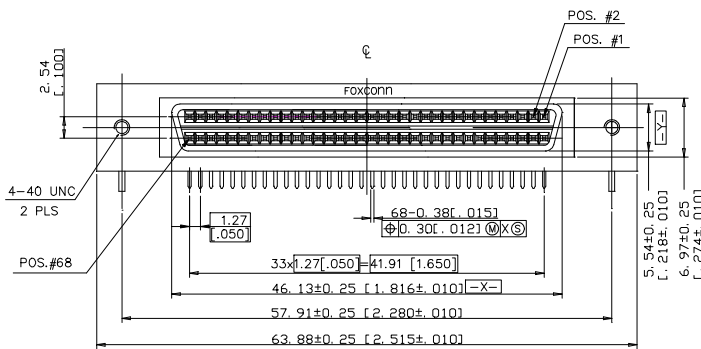
Housing: Thermoplastic, UL 94V-0 rated in black Color
Contact: Copper alloy
Plating: See "ORDERING INFORMATION"
Operating Temperature: -55°C to +85°C

SCSI Serial Connector

QA Series
Right Angle, T/H Type
2.54mm [.100"] Pitch
Stacked 68 Pos.



DRAWING



RECOMMENDED PCB LAYOUT COMPONENT SIDE

DEFAULT TOLERANCE: ±0.05 [L.002]

ORDERING INFORMATION

PRODUCT NO. : QA 1 1 3 4 3- NHB6- A F

Series Prefix _____
 Termination Type _____
 1=Right Angle
 Contact DesignType _____
 1=Female
 No. of Pos. _____
 34=68 Pos .
 Lead Free Code
 F=Lead Free
 Package Code
 A=Tube
 Extension Code
 Contact Plating
 3= 30u"Gold Plating

QA11343-NHB6-AF	30u" GOLD PLATING AT CONTACT AREA
P/N	PLATING