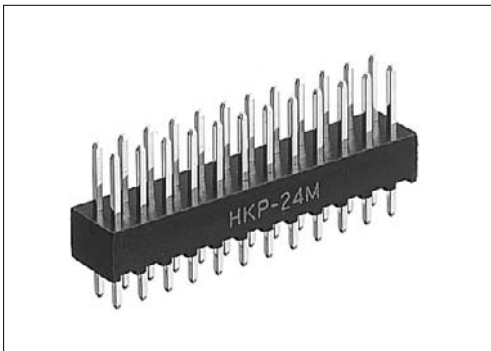


Straight through hole type male connector for PCB  
HKP-( )M1

For PCB

Straight Through hole

RoHS

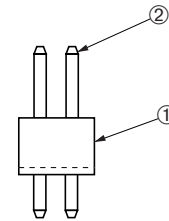
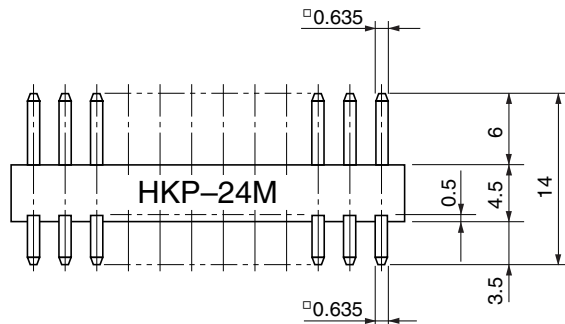
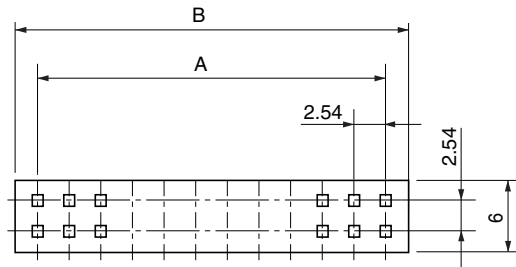


● Configuration of product Part No.

**HKP- ( ) M 1**

①      ②      ③

- ① Series name
- ② No. of contacts: 4-70
- ③ Type of contact  
M: Male



● Dimensions

No. of contacts	A	B	No. of contacts	A	B	No. of contacts	A	B	No. of contacts	A	B
4	2.54	5.68	22	25.40	28.54	40	48.26	51.40	58	71.12	74.26
6	5.08	8.22	24	27.94	31.08	42	50.80	53.94	60	73.66	76.80
8	7.62	10.76	26	30.48	33.62	44	53.34	56.48	62	76.20	79.34
10	10.16	13.30	28	33.02	36.16	46	55.88	59.02	64	78.74	81.88
12	12.70	15.84	30	35.56	38.70	48	58.42	61.56	66	81.28	84.42
14	15.24	18.38	32	38.10	41.24	50	60.96	64.10	68	83.82	86.96
16	17.78	20.92	34	40.64	43.78	52	63.50	66.64	70	86.36	89.50
18	20.32	23.46	36	43.18	46.32	54	66.04	69.18			
20	22.86	26.00	38	45.72	48.86	56	68.58	71.72			

● Components

①	Insulator
②	Contact

Mating connectors: HKP series double-row type female connector

DIC series