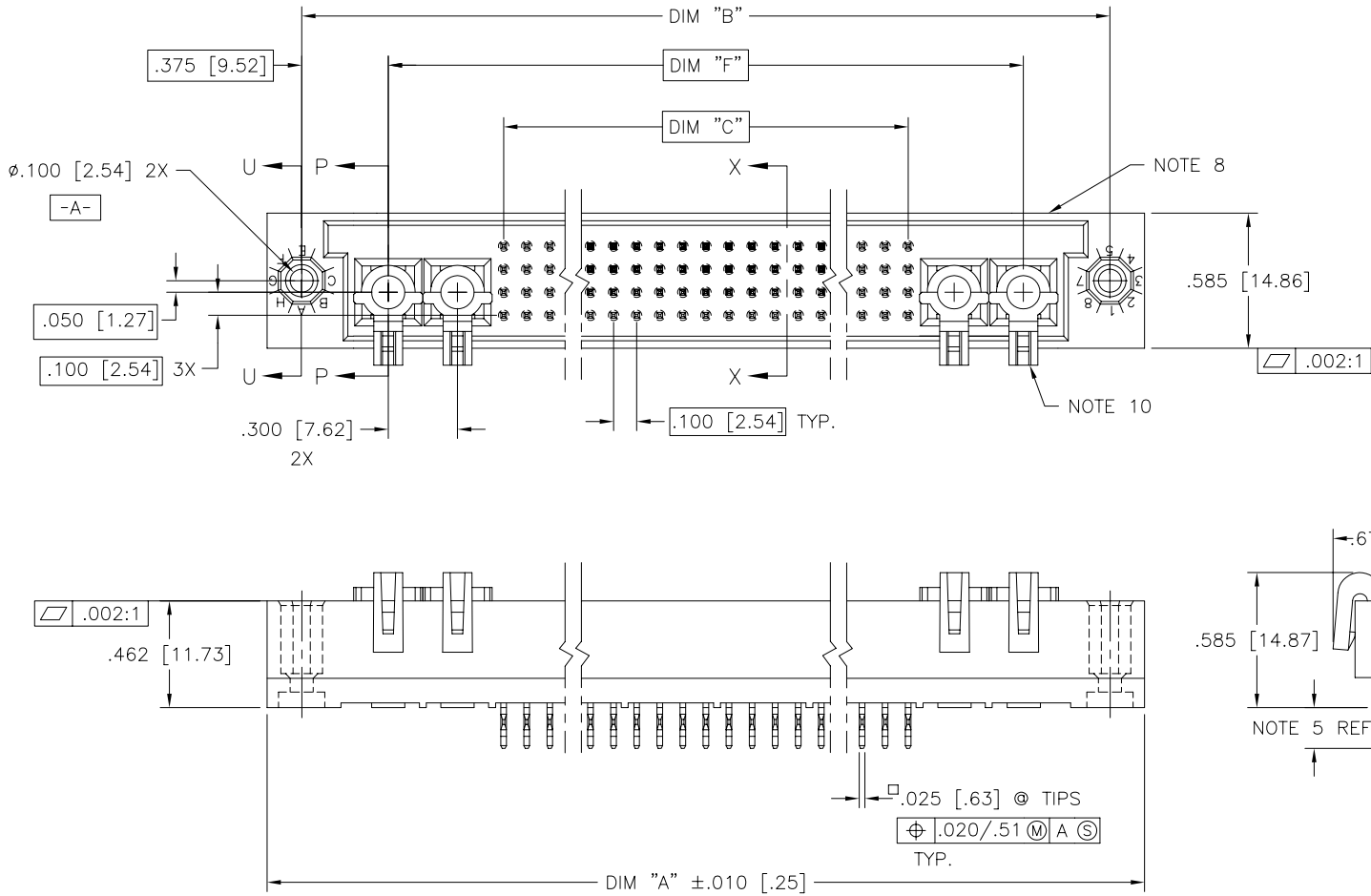


PRODUCT NUMBER  
SEE NOTE 1



FCIconnect.com

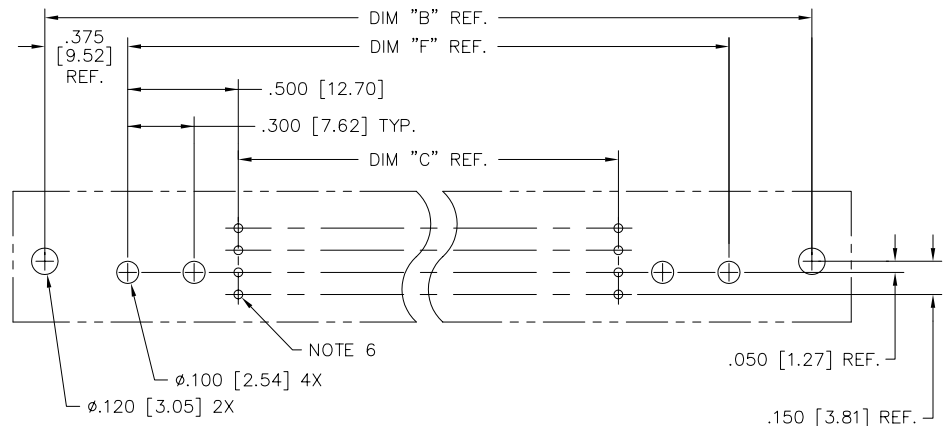
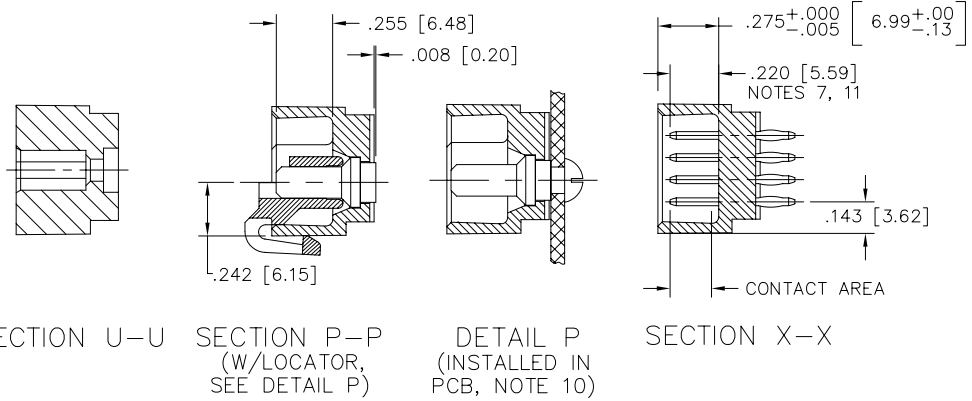
Copyright FCI

mat'l. code NOTE 3		surface ISO 1302 ✓		tolerance ISO 406 ISO 1101		projection INCH/MM		product family HPC	
tolerances unless otherwise specified		angles		linear		scale 1:1		title 4 ROW VERTICAL HEADER PRESS FIT, 0 G.P., 4 P.P.	
A	V22185	RDS	5/11/92		.xx±.01/.3			dwg no 50513	
B	V40259	PDP	1/14/94		.xxx±.005/.13			sheet 1 of 2 size A3	
C	V41237	GAH	8/17/94	0'±2'	.xxx±.0020/.05			type Product Customer Drawing	
D	V91066	DLW	5/12/99	dr	D.SHEAFFER	5/7/92			
E	V00273	JWS	2/1/00	engr	S.CLARK	5/11/92			
F	M06-0260	MHT	7/07/06	chr	S.CLARK	5/11/92			
				appd	S.CLARK	5/11/92			
sheet index	revision sheet	F	F						
		1	2						

PRODUCT NUMBER	DIM.	LENGTH FORMULAS
SEE NOTE 1	DIM "A"	.100/2.54 x NO. OF COLUMNS +1.95/49.5
	DIM "B"	.100/2.54 x NO. OF COLUMNS +1.650/41.91
	DIM "C"	.100/2.54 x NO. OF COLUMNS - .100/2.54
	DIM "F"	.100/2.54 x NO. OF COLUMNS +.900/22.86

NOTES:

- ① PRODUCT NUMBERING CODE:  
 $50513 - X\ YYY\ Z$   
 TAIL LENGTH (NOTE 5)  
 NO. OF POSITIONS (NOTE 2)  
 PLATING (NOTE 4)  
 BASE NUMBER
  
- ② THIS PRODUCT IS CONFIGURED IN SIZES OF 6 thru 80 COLUMNS IN INCREMENTS OF ONE.  
 i.e.: 6,7,8,9,.....79,80.
- ③ HOUSING MATERIAL: GLASS AND MINERAL FILLED HIGH TEMP. THERMOPLASTIC. FLAME RETARDANT PER UL94V-0. COLOR: BLACK. PIN MATERIAL: PHOS BRONZE
- ④ PLATING CONTACT AREA OPTIONS:  
 A = 50u" Ni UNDER ALL WITH 30u" Au ON CONTACT AREA, SnPb ON PCB INTERFACE AND Au FLASH ON ALL OTHER AREAS.  
 C = 50u" Ni UNDER ALL WITH 30u" Au ON CONTACT AREA, SnPb ON PCB INTERFACE, 30u" ON TAIL SIDE CONTACT AREA, AND Au FLASH ON ALL OTHER AREAS.
- ⑤ TAIL LENGTH OPTIONS:  
 FOR PLATING OPTION "A":  
 A = .177/4.5  
 G = .250/6.35  
 FOR PLATING OPTION "C":  
 C = .533/13.54  
 D = .733/18.62
- ⑥  $\phi .0453/1.151$  DRILLED HOLE PLATED WITH  $.0003/.007$  MIN. SnPb OVER  $.001/.03$  TO  $.003/.08$  Cu. PLATING TO ACHIEVE A  $\phi .040 \pm .003/1.02 \pm .08$  HOLE.
- ⑦ TO ASSURE PROPER INSTALLATION: TOOLING, AS SPECIFIED IN INSTRUCTION MANUAL 155915-001 MUST BE USED. PIN MATING LENGTH WILL BE  $\pm .002/.05$  AFTER INSTALLATION.
- ⑧ MANUFACTURERS NAME, PART NUMBER AND LOT CODE TO APPEAR ON THIS SURFACE PER BUS-12-108.
- ⑨ FOR DOCUMENTATION MENU, SEE BUS-01-057.
- ⑩ POWER PIN LOCATOR (REF. 50234) TO BE REMOVED AFTER INSTALLATION.
- ⑪ REFERENCE 50804 FOR F.M.L.B. OPTIONS AND WORKSHEET.



RECOMMENDED PCB LAYOUT  
 (ALL HOLES LOCATED ON .100/2.54 GRID UNLESS OTHERWISE SPECIFIED)

mat'l. code		surface ISO 1302	tolerance ISO 406 ISO 1101	projection INCH/MM	product family HPC
ltr		tolerances unless otherwise specified		scale 1:1	title 4 ROW VERTICAL HEADER PRESS FIT, 0 G.P., 4 P.P.
ecn	no dr	angles	linear		
date		dr	D.SHEAFFER	5/7/92	dwg no
		enr	S.CLARK	5/11/92	sheet 2 of 2 size
		chr	S.CLARK	5/11/92	50513
		appd	S.CLARK	5/11/92	A3
sheet index	revision sheet				type Product Customer Drawing

Copyright FCI  
 FCIconnect.com